



Rock River Recovery

July Quarterly Networking Forum

Agricultural Producer Solutions



October 2015



Agenda

<u>Time</u>	<u>Topic</u>
<u>9:00</u>	<u>Networking Reception</u>
<u>9:30</u>	<u>Welcome, Introductions</u>
<u>9:45</u>	<u>Sector Team Updates</u>
<u>10:15</u>	<u>Producer Solutions for NPS Reductions</u> <ul style="list-style-type: none">• St Croix Farmer Led Council – Julia Olmsted• Ag Retailer Partnerships – Jill Carlson• Yahara Pride Farms – Bob Uphoff
<u>11:15</u>	<u>Producer Solutions for NPS Reductions</u> <ul style="list-style-type: none">• Open Discussion
<u>11:50</u>	<u>Wrap-up: Summary of Day</u>
<u>12:00</u>	<u>Adjourn</u>



SECTOR TEAM UPDATES



Rock River Recovery TMDL

SECTOR TEAM UPDATES

- Implementation Team – Mark Riedel
- Agriculture – Mike Gilbertson
- Monitoring – Mike Sorge
- MS4 – Eric Rortvedt
- Outreach – Mark Riedel
- WW – Amy Garbe



Implementation Team

- ✓ Monthly update meetings
- ✓ Working meetings
 - Internal DNR
 - US EPA
 - Stakeholders
 - WPDES, Counties, NGO's, etc
- ✓ Implementation Strategy
- Implementation Plan
 - REASONABLE ASSURANCE



Implementation Plan Dates

Sector Team	Gen. Text	Implementation Strategy	Framework	Draft Text	Final Text
Ag/NPS	X	X	X	Nov/Dec	
E&O	X	X	X	Nov/Dec	
Monitoring	X	X	X	Nov/Dec	
MS4	X	X	X	X	
WW	X	X	X	X	



Rock River Recovery TMDL

SECTOR TEAM UPDATES

- Implementation Team – Mark Riedel
- **Agriculture – Mike Gilbertson**
- Monitoring – Mike Sorge
- MS4 – Eric Rortvedt
- Outreach – Mark Riedel
- WW – Amy Garbe



Ag Sector Team Updates

- County Template
 - EPA support for counties
 - 9KE plans, whole county approach
 - DATCP - ATCP50 Revisions
- Practices
 - EPA, DATCP, NRCS, farmers
 - Harvestable buffers, cover crops
 - Stream banks, cattle exclusion
 - Restored wetlands



Rock River Recovery TMDL

SECTOR TEAM UPDATES

- Implementation Team – Mark Riedel
- Agriculture – Mike Gilbertson
- **Monitoring – Mike Sorge**
- MS4 – Eric Rortvedt
- Outreach – Mark Riedel
- WW – Amy Garbe



Rock River Recovery TMDL

SECTOR TEAM UPDATES

- Implementation Team – Mark Riedel
- Agriculture – Mike Gilbertson
- Monitoring – Mike Sorge
- **MS4 – Eric Rortvedt**
- Outreach – Mark Riedel
- WW – Amy Garbe



Rock River Recovery TMDL

SECTOR TEAM UPDATES

- Implementation Team – Mark Riedel
- Agriculture – Mike Gilbertson
- Monitoring – Mike Sorge
- MS4 – Eric Rortvedt
- Outreach – Mark Riedel
- WW – Amy Garbe



Outreach

- Monthly Updates – Gov Delivery
 - Events, News to share?
- Meeting Summary
 - E&O Team Meeting – Mon Nov 16th
 - Quarterly Forums
 - Monitoring - January
 - Stormwater - April
 - Education & Outreach - July
 - Ag. Producer Solutions - October
- 2016 Events

Rock River Gov-Delivery

- Four Groups (774, 699, 528, 390)
 - Rock River General
 - Ag
 - E&O
 - IT
- Monthly Updates
- High “delivery”
- Moderate “activity”

The screenshot shows the website for the Rock River Recovery project. The main navigation bar includes links for Business, Licenses & Regulations, Recreation, Education, Topics, Contact, and Join DNR, along with a search bar. The main content area features a title "Rock River Recovery: A Basinwide Total Maximum Daily Load (TMDL) for Water Quality Improvement" and a detailed introductory paragraph. Below this is an "Overview of the Rock River Basin Recovery project" section with four columns of links and images. The sidebar on the right contains a "TMDLs" menu with links for overview, development, approvals, implementation, wastewater, nonpoint source, and a "TMDL status map" link, which is circled in red. At the bottom of the sidebar is a "SUBSCRIBE" button and a "Meeting announcements" section.

Rock River Gov-Delivery

- Short highlights
- Sector Team
- Hot News
- Resources
 - Weblinks
 - DNR Resources
- **Events**
- **Fun Blurb**

ROCK RIVER RECOVERY

Monthly TMDL Implementation Update

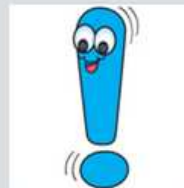


2015



*Listen! The wind is rising,
and the air is wild with
leaves. We've had our
summer evenings, now for
October eves!*

"The river delights to lift
us free, if only we dare to
let go. Our true work
is the voyage, living the
adventure.", Richard
Bach



**FREE WETLANDS
WEBINAR**

The [Rock River Coalition](#)
and the Environmental

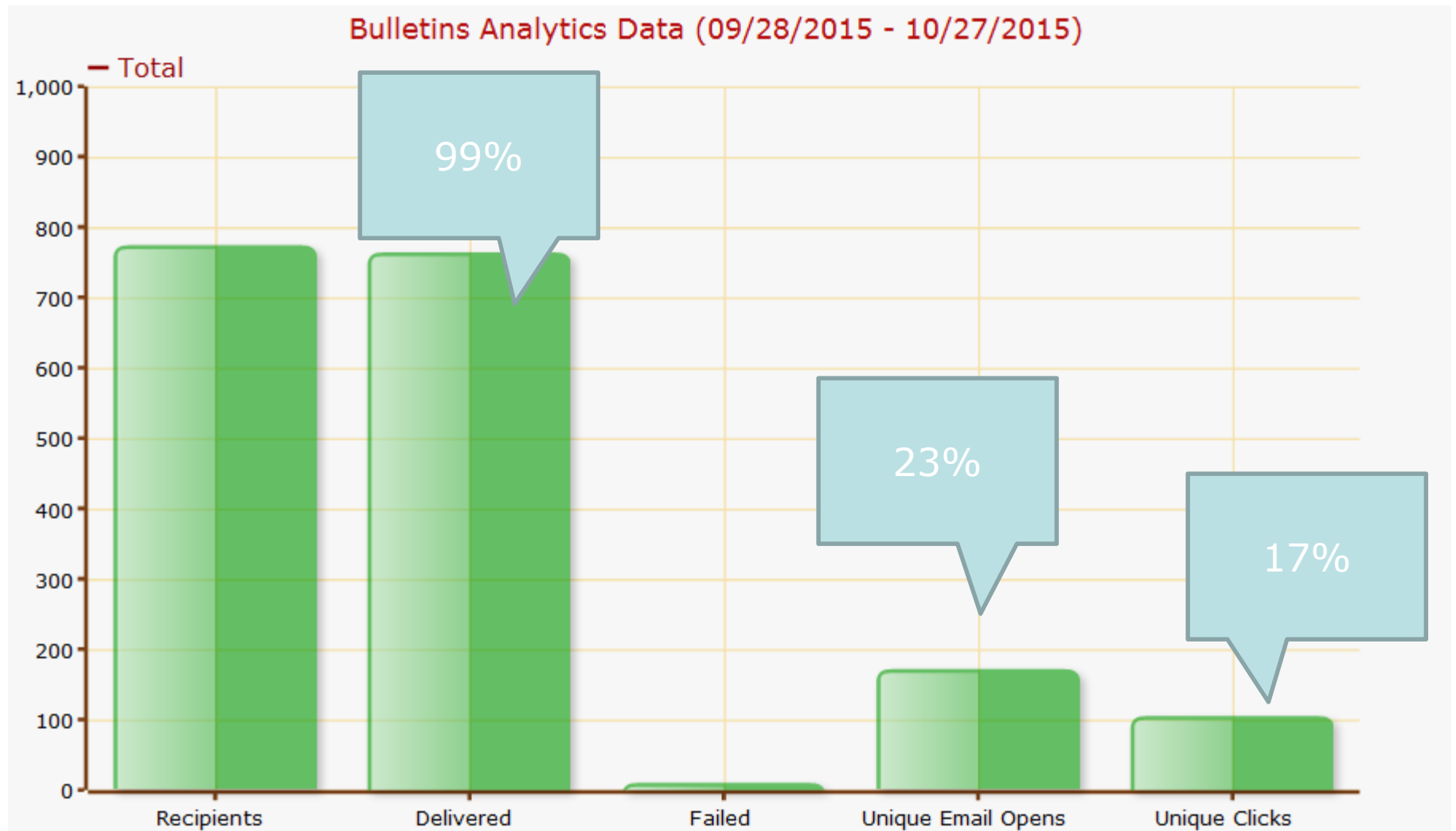


Manure injection combined with no-till is an example of producer solutions for reducing NPS pollution. However, such technologies can be expensive and challenging to adopt.

Producer Solutions for NPS TMDL Implementation

We are pleased to announce the agenda for the Rock River Recovery Quarterly Networking Forum in October. We'd like to extend our gratitude to partners from our counties, UW Extension, Yahara Pride Farms, and the Partnership for Ag Resource Management for participating! The focus of the forum will be on Producer/Farm solutions for Nonpoint Source TMDL Implementation and include speakers from the Farmer/Producer and Agriculture Industry. [Click here to download an agenda](#)

Rock River Gov-Delivery





Rock River Recovery TMDL

SECTOR TEAM UPDATES

- Implementation Team – Mark Riedel
- Agriculture – Mike Gilbertson
- Monitoring – Mike Sorge
- MS4 – Eric Rortvedt
- Outreach – Mark Riedel
- **WW – Amy Garbe**



Agenda

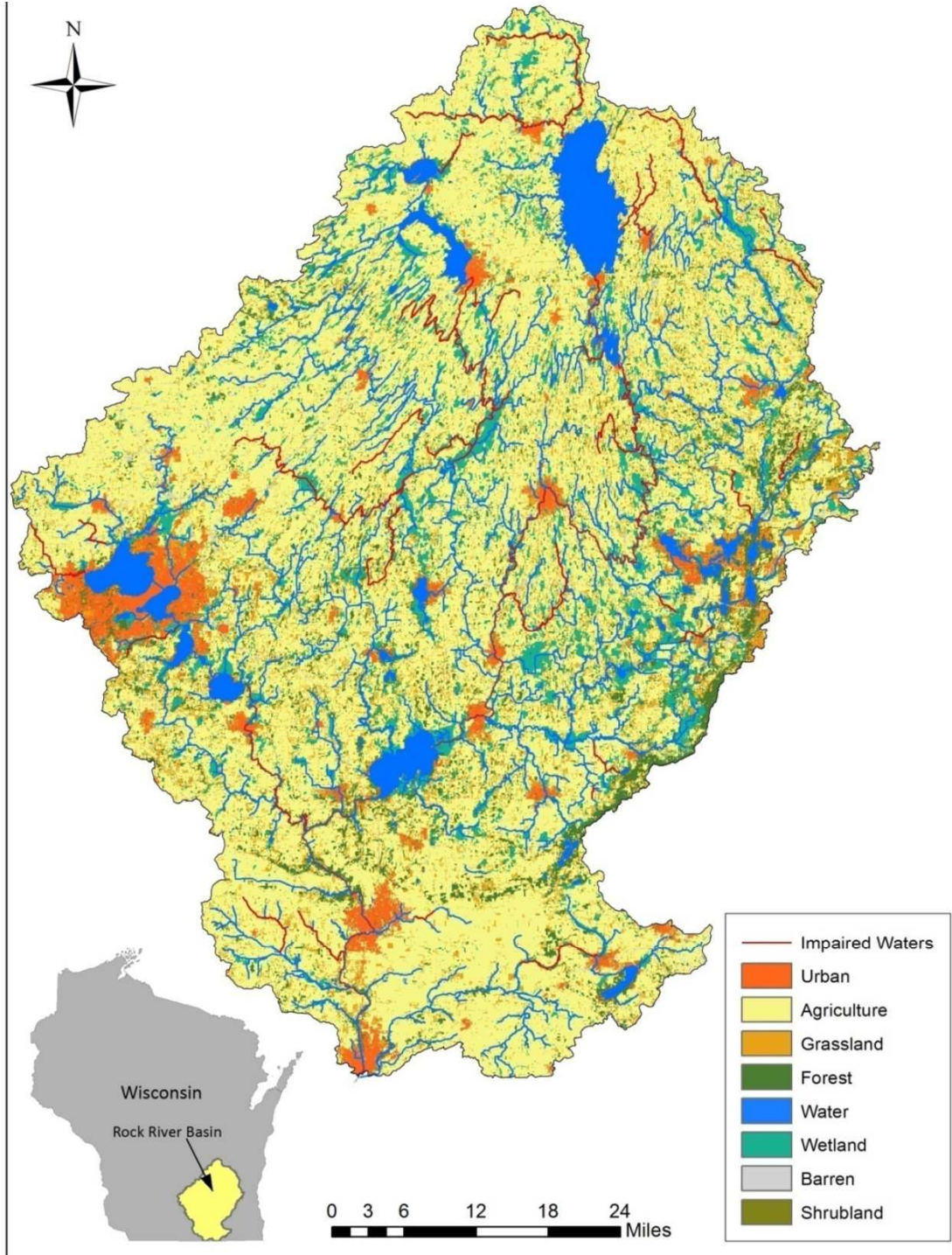
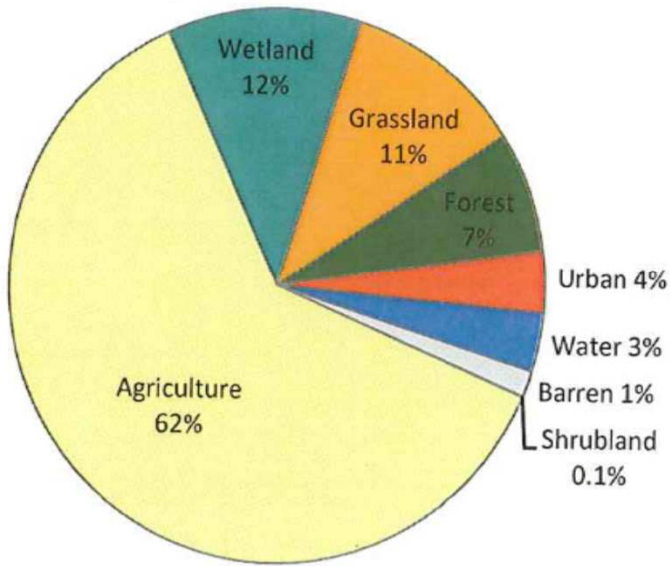
<u>Time</u>	<u>Topic</u>
<u>9:00</u>	<u>Networking Reception</u>
<u>9:30</u>	<u>Welcome, Introductions</u>
<u>9:45</u>	<u>Sector Team Updates</u>
<u>10:15</u>	<u>Producer Solutions for NPS Reductions</u> <ul style="list-style-type: none">• St Croix Farmer Led Council – Julia Olmsted• Ag Retailer Partnerships – Jill Carlson• Yahara Pride Farms – Bob Uphoff
<u>11:15</u>	<u>Producer Solutions for NPS Reductions</u> <ul style="list-style-type: none">• Open Discussion
<u>11:50</u>	<u>Wrap-up: Summary of Day</u>
<u>12:00</u>	<u>Adjourn</u>



Agenda

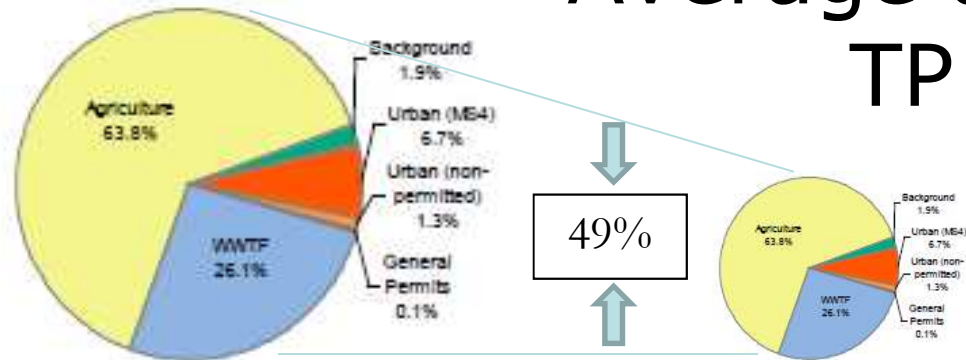
<u>Time</u>	<u>Topic</u>
<u>9:00</u>	<u>Networking Reception</u>
<u>9:30</u>	<u>Welcome, Introductions</u>
<u>9:45</u>	<u>Sector Team Updates</u>
<u>10:15</u>	<u>Producer Solutions for NPS Reductions</u> <ul style="list-style-type: none">• St Croix Farmer Led Council – Julia Olmsted• Ag Retailer Partnerships – Jill Carlson• Yahara Pride Farms – Bob Uphoff
<u>11:15</u>	<u>Producer Solutions for NPS Reductions</u> <ul style="list-style-type: none">• Open Discussion
<u>11:50</u>	<u>Wrap-up: Summary of Day</u>
<u>12:00</u>	<u>Adjourn</u>

Land Use in the Rock River Basin

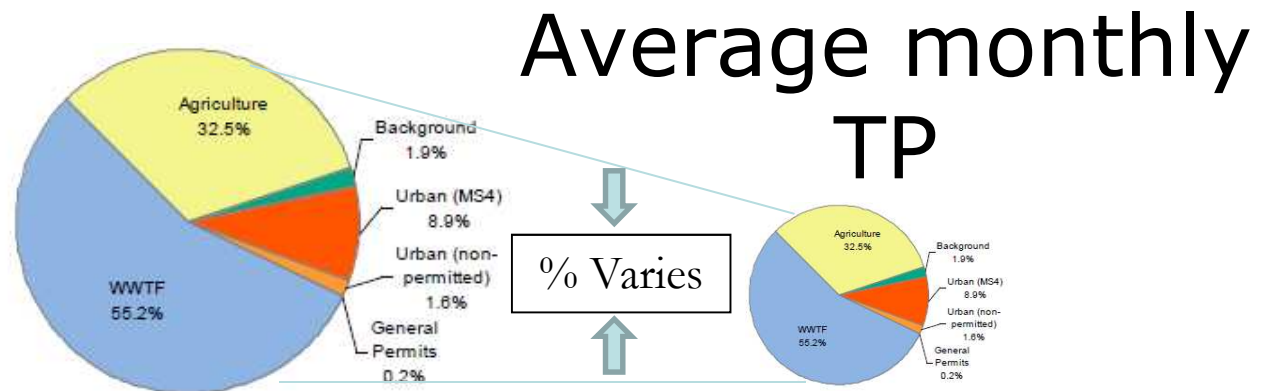


Phosphorous Pollution

Load Allocation



Waste Load Allocation





Ag Producer/Retailer Solutions

- Farmland is our biggest resource
- Farmers know conservation
- Farms are businesses
 - Respond to demand
 - rBGH Free Milk
 - 1993
 - 22% in 2002 down to 11% in 2004
 - Organic/Free Range Livestock
- What can we do to support farmers?



ADJOURN 😊

