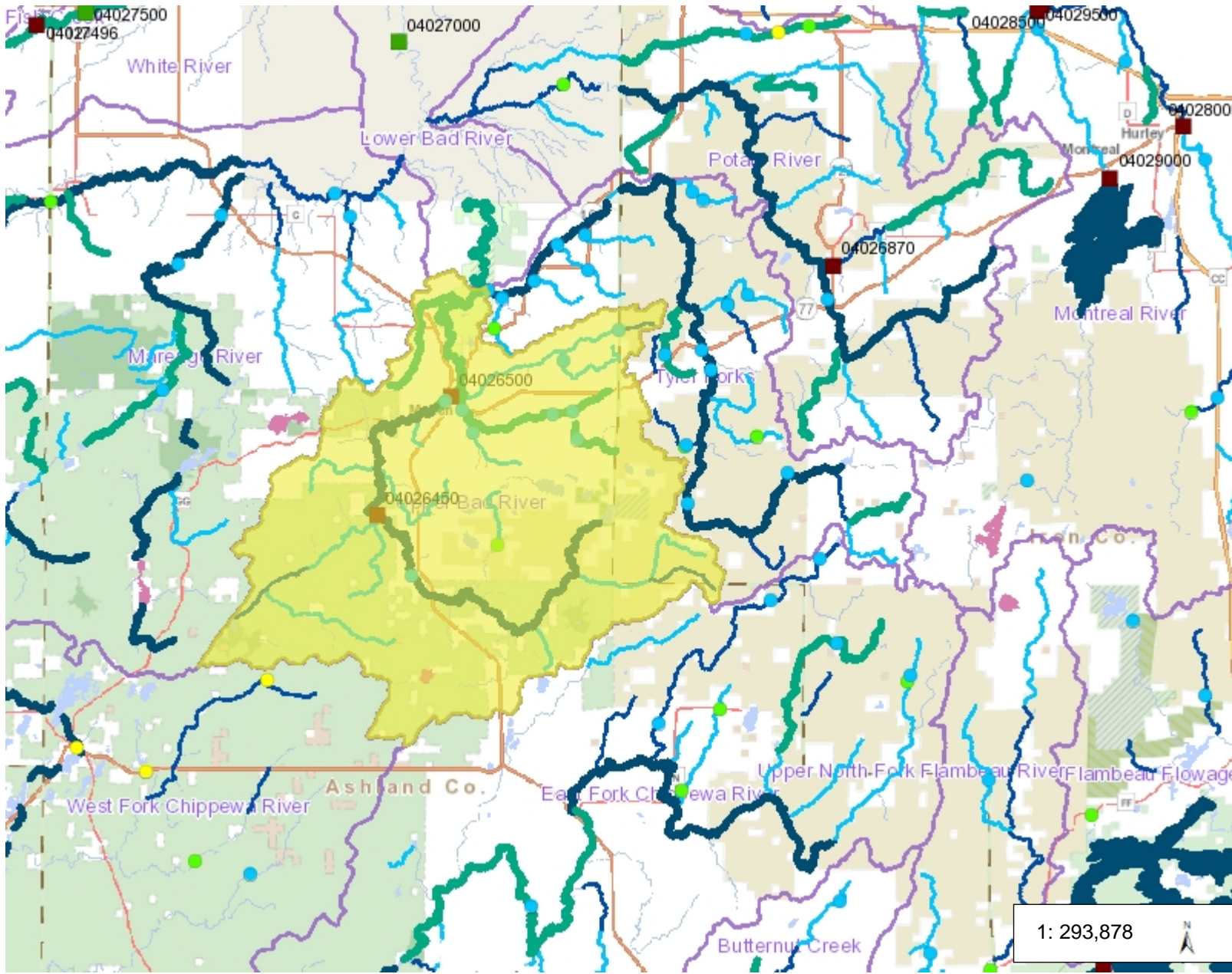




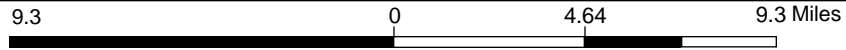
# LS14 WATERSHED -



**Legend**

- Macroinvertebrate IBI 10-Yr St
  - Poor (Red dot)
  - Fair (Yellow dot)
  - Good (Green dot)
  - Excellent (Blue dot)
- USGS Gage Stations
  - Active (Green square)
  - Inactive (Red square)
- Outstanding and Exceptional S
  - Exceptional (Light green line)
  - Outstanding (Dark blue line)
- Locational Information (line)
  - COMPLETE (Orange line)
  - CONFLICT (Purple line)
- Outstanding and Exceptional L
  - Exceptional (Light green area)
  - Outstanding (Dark blue area)
- Locational Information (area)
  - COMPLETE (Light orange area)
  - CONFLICT (Light green area)
- Trout Stream Lines
  - Class 1 (Light green line)
  - Class 2 (Light blue line)
  - Class 3 (Dark blue line)
- Trout Spring Ponds
  - Class 1 (Light green square)
  - Class 2 (Light blue square)
  - Class 3 (Dark blue square)

1: 293,878



DISCLAIMER: The information shown on these maps has been obtained from various sources, and are of varying age, reliability and resolution. These maps are not intended to be used for navigation, nor are these maps an authoritative source of information about legal land ownership or public access. No warranty, expressed or implied, is made regarding accuracy, applicability for a particular use, completeness, or legality of the information depicted on this map. For more information, see the DNR Legal Notices web page: <http://dnr.wi.gov/org/legal/>

**Notes**