

Brook trout
 length frequency
 Bears Grass Creek
 summer 2004

Size Range (inches)	No. of fish		
	Site 1	Site 2	Site 3
1.5 - 1.9			
2.0 - 2.4			
2.5 - 2.9	1		1
3.0 - 3.4			
3.5 - 3.9			
4.0 - 4.4			
4.5 - 4.9			
5.0 - 5.4			
5.5 - 5.9			
6.0 - 6.4			
6.5 - 6.9			1
7.0 - 7.4	2		1
7.5 - 7.9	1	1	1
8.0 - 8.4	3		
8.5 - 8.9	3		
9.0 - 9.4	1	1	
9.5 - 9.9	3	1	
10.0-10.4	1		
10.5-10.9		2	
11.0-11.4			
11.5-11.9		1	
12.0-12.4			
12.5-12.9	1		
Totals	16	6	4

Bears Grass Creek 2004 survey

Station Number:	1	2	3
Sampling Date:	6/16/04	7/13/04	7/6/04
Station Length (m):	100	100	100

FISH SPECIES	CODE			
Ammocete Lamprey	A00	10		
Blacknose Dace	M48	9	51	
Brook Stickleback	U01	1	7	14
Brook Trout	I22	16	6	4
Central Mudminnow	K01	2		2
Creek Chub	M50	2	3	1
Fathead Minnow	M46	2	2	
Johnny Darter	X12	11	5	
Largescale Stoneroller	M07	3		
Longnose Dace	M49	58	1	
Northern Redbelly Dace	M42	1	12	
Pearl Dace	M51		6	2
White Sucker	N09	13	1	

Diamond Valley Creek
brook trout
length frequency
July 10, 2007

Length interval (inches)	No. of fish captured
1.5 - 1.9	
2.0 - 2.4	1
2.5 - 2.9	1
3.0 - 3.4	
3.5 - 3.9	
4.0 - 4.4	
4.5 - 4.9	
5.0 - 5.4	
5.5 - 5.9	
6.0 - 6.4	
6.5 - 6.9	
7.0 - 7.4	1
7.5 - 7.9	
8.0 - 8.4	
8.5 - 8.9	
9.0 - 9.4	
9.5 - 9.9	
Totals	3

Diamond Valley Creek

STATION INFORMATION			
Station Number	1 ¹	2 ¹	3 ²
Station location	STH 12	Oak Ridge Rd.	Livermore Rd.
Sampling Date	7/10/07	7/10/07	
Station Length (m)	100	100	100
FISH SPECIES	No.	No.	No.
Brassy minnow			1
Brook Stickleback			34
Brook Trout		3	
Central Mudminnow			3
Creek Chub			79
Fathead Minnow			2
Johnny Darter			61

¹Station was sampled only for gamefish, threatened and endangered species.

²All fish species collected, IBI site.

Diamond Valley Creek
brook trout
length frequency
July 6, 2004

Length interval (inches)	No. of fish captured
1.5 - 1.9	
2.0 - 2.4	
2.5 - 2.9	1
3.0 - 3.4	
3.5 - 3.9	
4.0 - 4.4	
4.5 - 4.9	
5.0 - 5.4	
5.5 - 5.9	1
6.0 - 6.4	
6.5 - 6.9	
7.0 - 7.4	1
7.5 - 7.9	1
8.0 - 8.4	
8.5 - 8.9	
9.0 - 9.4	
9.5 - 9.9	1
10.0-10.4	
10.5-10.9	
11.0-11.4	
11.5-11.9	
12.0-12.4	
12.5-12.9	
Totals	5

Diamond Valley Creek at Livermore Rd.

STATION INFORMATION	
Station Number:	1
Sampling Date:	7/6/04
Station Length (m):	100

FISH SPECIES	Code	No.
Ammocete Lamprey	A00	
Bigmouth Shiner	M29	
Black Bullhead	O05	
Blackchin Shiner	M31	
Blacknose Dace	M48	
Blackside Darter	X18	
Brook Stickleback	U01	1
Brook Trout	I22	5
Brown Trout	I21	
Burbot	R01	
Central Mudminnow	K01	
Common Shiner	M28	
Creek Chub	M50	1
Fantail Darter	X10	
Fathead Minnow	M46	
Finescale Dace	M44	
Johnny Darter	X12	
Largescale Stoneroller	M07	
Longnose Dace	M49	
Northern Brook Lamprey	A03	
Northern Hogsucker	N13	
Northern Redbelly Dace	M42	
Pearl Dace	M51	12
Redside Dace	M09	
White Sucker	N09	
Yellow Perch	X15	

STATION INFORMATION	
Stream Name:	First Trestle Cr.
Station Number:	1
Sampling Date:	7/6/04
Station Length (m):	100

FISH SPECIES	CODE	
Ammocete Lamprey	A00	
Bigmouth Shiner	M29	
Black Bullhead	O05	
Blackchin Shiner	M31	
Blacknose Dace	M48	3
Blackside Darter	X18	
Brook Stickleback	U01	12
Brook Trout	I22	2
Brown Trout	I21	7
Burbot	R01	
Central Mudminnow	K01	1
Common Shiner	M28	
Creek Chub	M50	3
Fantail Darter	X10	
Fathead Minnow	M46	
Finescale Dace	M44	
Johnny Darter	X12	
Largescale Stoneroller	M07	
Longnose Dace	M49	
Northern Brook Lamprey	A03	
Northern Hogsucker	N13	
Northern Redbelly Dace	M42	
Pearl Dace	M51	
Redside Dace	M09	
White Sucker	N09	5
Yellow Perch	X15	

Trout length frequency, 20

Size Range (inches)	First Trestle Cr.	
	Brook	Brown
1.5 - 1.9		
2.0 - 2.4		3
2.5 - 2.9		3
3.0 - 3.4	2	
3.5 - 3.9		
4.0 - 4.4		
4.5 - 4.9		
5.0 - 5.4		
5.5 - 5.9		
6.0 - 6.4		
6.5 - 6.9		
7.0 - 7.4		
7.5 - 7.9		1
8.0 - 8.4		
8.5 - 8.9		
9.0 - 9.4		
9.5 - 9.9		
10.0-10.4		
10.5-10.9		
11.0-11.4		
11.5-11.9		
12.0-12.4		
12.5-12.9		
Totals	2	7

STATION INFORMATION	
Stream Name:	Deinhammer Cr.
Station Number:	1
Sampling Date:	6/29/04
Station Length (m):	100

FISH SPECIES	CODE	
Ammocete Lamprey	A00	7
Bigmouth Shiner	M29	
Black Bullhead	O05	
Blackchin Shiner	M31	
Blacknose Dace	M48	
Blackside Darter	X18	
Brook Stickleback	U01	
Brook Trout	I22	107
Brown Trout	I21	
Burbot	R01	
Central Mudminnow	K01	
Common Shiner	M28	
Creek Chub	M50	
Fantail Darter	X10	
Fathead Minnow	M46	
Finescale Dace	M44	
Johnny Darter	X12	
Largescale Stoneroller	M07	
Longnose Dace	M49	
Northern Brook Lamprey	A03	
Northern Hogsucker	N13	
Northern Redbelly Dace	M42	
Pearl Dace	M51	
Redside Dace	M09	
White Sucker	N09	
Yellow Perch	X15	

Trout length frequency,

Size Range (inches)	Deinhammer Cr.	
	Brook	
1.5 - 1.9	2	
2.0 - 2.4	9	
2.5 - 2.9	1	
3.0 - 3.4	1	
3.5 - 3.9	1	
4.0 - 4.4	17	
4.5 - 4.9	12	
5.0 - 5.4	16	
5.5 - 5.9	16	
6.0 - 6.4	15	
6.5 - 6.9	9	
7.0 - 7.4	1	
7.5 - 7.9	3	
8.0 - 8.4	1	
8.5 - 8.9	1	
9.0 - 9.4	1	
9.5 - 9.9		
10.0-10.4	1	
10.5-10.9		
11.0-11.4		
11.5-11.9		
12.0-12.4		
12.5-12.9		
Totals	107	

STATION INFORMATION

Stream Name:	Pine Cr.	
Station Number:	1	2
Sampling Date:	6/30/04	6/30/04
Station Length (m):	100	100

FISH SPECIES	CODE		
Ammocete Lamprey	A00		
Bigmouth Shiner	M29		
Black Bullhead	O05		
Blackchin Shiner	M31		
Blacknose Dace	M48	1	3
Blackside Darter	X18		
Brook Stickleback	U01		1
Brook Trout	I22	42	23
Brown Trout	I21		
Burbot	R01		
Central Mudminnow	K01	1	
Common Shiner	M28		
Creek Chub	M50		1
Fantail Darter	X10		
Fathead Minnow	M46		
Finescale Dace	M44		
Johnny Darter	X12	6	
Largescale Stoneroller	M07		
Longnose Dace	M49	2	
Northern Brook Lamprey	A03		
Northern Hogsucker	N13		
Northern Redbelly Dace	M42		
Pearl Dace	M51		
Redside Dace	M09		
White Sucker	N09		1
Yellow Perch	X15		

Trout length frequency, 20

Size Range (inches)	Pine Cr.	
	Site 1 Brook	Site 2 Brook
1.5 - 1.9	1	
2.0 - 2.4	17	1
2.5 - 2.9	6	2
3.0 - 3.4	1	
3.5 - 3.9		
4.0 - 4.4		
4.5 - 4.9	4	
5.0 - 5.4	2	1
5.5 - 5.9	3	4
6.0 - 6.4	4	3
6.5 - 6.9	1	4
7.0 - 7.4	2	2
7.5 - 7.9	1	1
8.0 - 8.4		2
8.5 - 8.9		2
9.0 - 9.4		1
9.5 - 9.9		
10.0-10.4		
10.5-10.9		
11.0-11.4		
11.5-11.9		
12.0-12.4		
12.5-12.9		
Totals	42	23

Brook trout length
in Rush Creek, I

Size Range (inches)	N	
	site 1	
2.0 - 2.4		
2.5 - 2.9		
3.0 - 3.4		
3.5 - 3.9		
4.0 - 4.4		
4.5 - 4.9		
5.0 - 5.4	1	
5.5 - 5.9		
6.0 - 6.4	1	
6.5 - 6.9		
7.0 - 7.4		
7.5 - 7.9		
8.0 - 8.4		
8.5 - 8.9		
9.0 - 9.4		
9.5 - 9.9		
10.0 - 10.4		
10.5 - 10.9		
11.0 - 11.4		
11.5 - 11.9		
12.0 - 12.4		
Totals		2

Otter Creek 2010 Tier 1 Survey-Brown Trout Length Frequency

Length	HWY 53	CTY V	Mallard Rd	CTY D	CTY I	CTY J	CTY AA
2							
3			1	5	5	7	
4					1		
5						1	
6						1	
7				1		8	
8					1	14	1
9			1	7		9	1
10				4	1	4	1
11	2			1		6	1
12			1	1	1	4	
13	1				2	3	1
14						1	
15							2
16							1
17							
18						1	
19							
20							
21							

Stream Name:	Cr. 29-16
Station Number:	1
Sampling Date:	6/30/04
Station Length (m):	100

FISH SPECIES	CODE	
Ammocete Lamprey	A00	
Bigmouth Shiner	M29	
Black Bullhead	O05	
Blackchin Shiner	M31	
Blacknose Dace	M48	
Blackside Darter	X18	
Brook Stickleback	U01	
Brook Trout	I22	10
Brown Trout	I21	
Burbot	R01	
Central Mudminnow	K01	
Common Shiner	M28	
Creek Chub	M50	
Fantail Darter	X10	
Fathead Minnow	M46	
Finescale Dace	M44	
Johnny Darter	X12	
Largescale Stoneroller	M07	
Longnose Dace	M49	
Northern Brook Lamprey	A03	
Northern Hogsucker	N13	
Northern Redbelly Dace	M42	
Pearl Dace	M51	
Redside Dace	M09	
White Sucker	N09	
Yellow Perch	X15	

Brook trout
length frequency
Creek 29-16
June 30, 2004

Size Range (inches)	No. of fish
1.5 - 1.9	
2.0 - 2.4	
2.5 - 2.9	
3.0 - 3.4	
3.5 - 3.9	
4.0 - 4.4	
4.5 - 4.9	3
5.0 - 5.4	4
5.5 - 5.9	2
6.0 - 6.4	1
6.5 - 6.9	
7.0 - 7.4	
7.5 - 7.9	
8.0 - 8.4	
8.5 - 8.9	
9.0 - 9.4	
9.5 - 9.9	
10.0-10.4	
10.5-10.9	
11.0-11.4	
11.5-11.9	
12.0-12.4	
12.5-12.9	
Totals	10

Figure 4. Brook trout size structure in Duncan Creek between the Bloomer dam and Tilden Millpond, July 2005

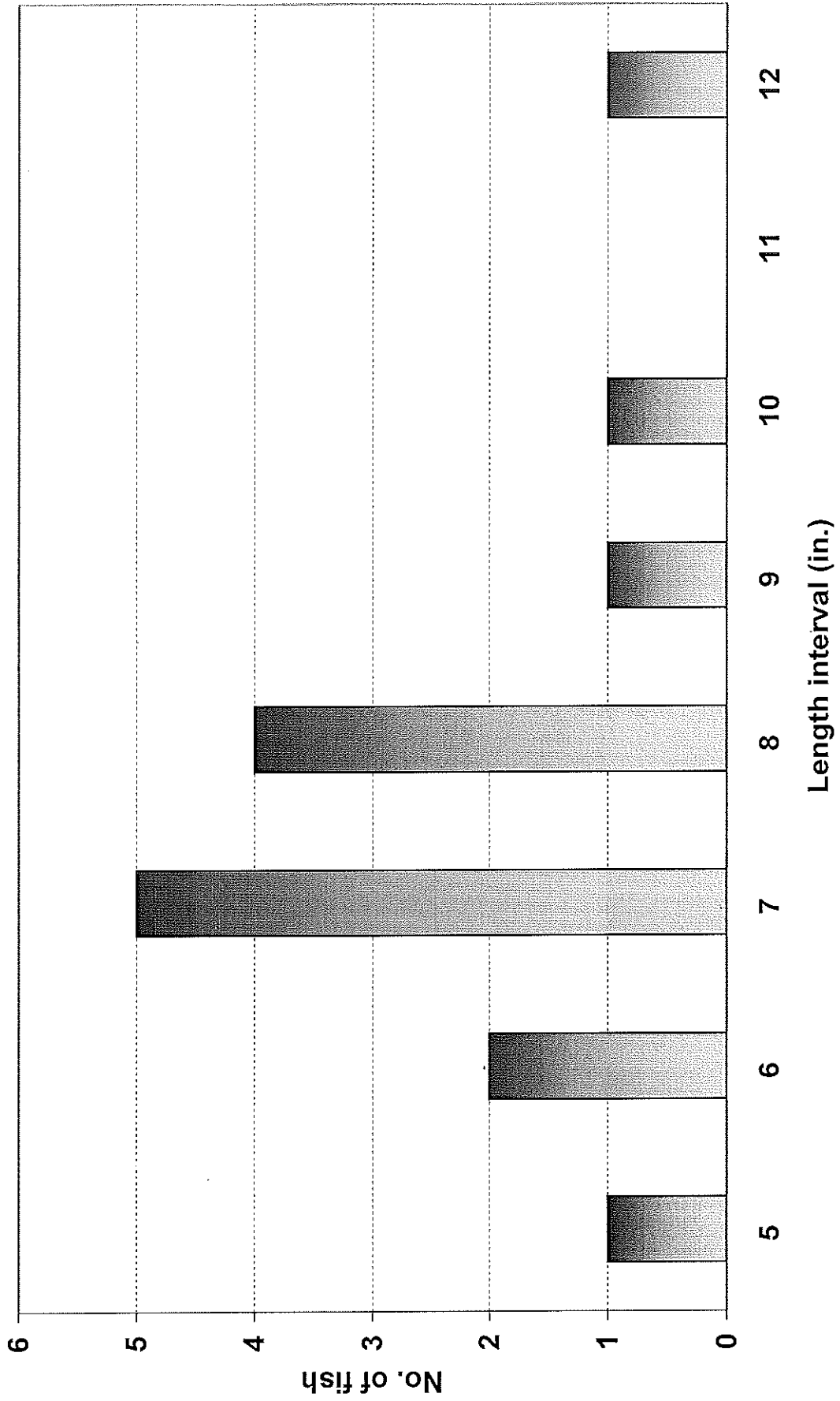
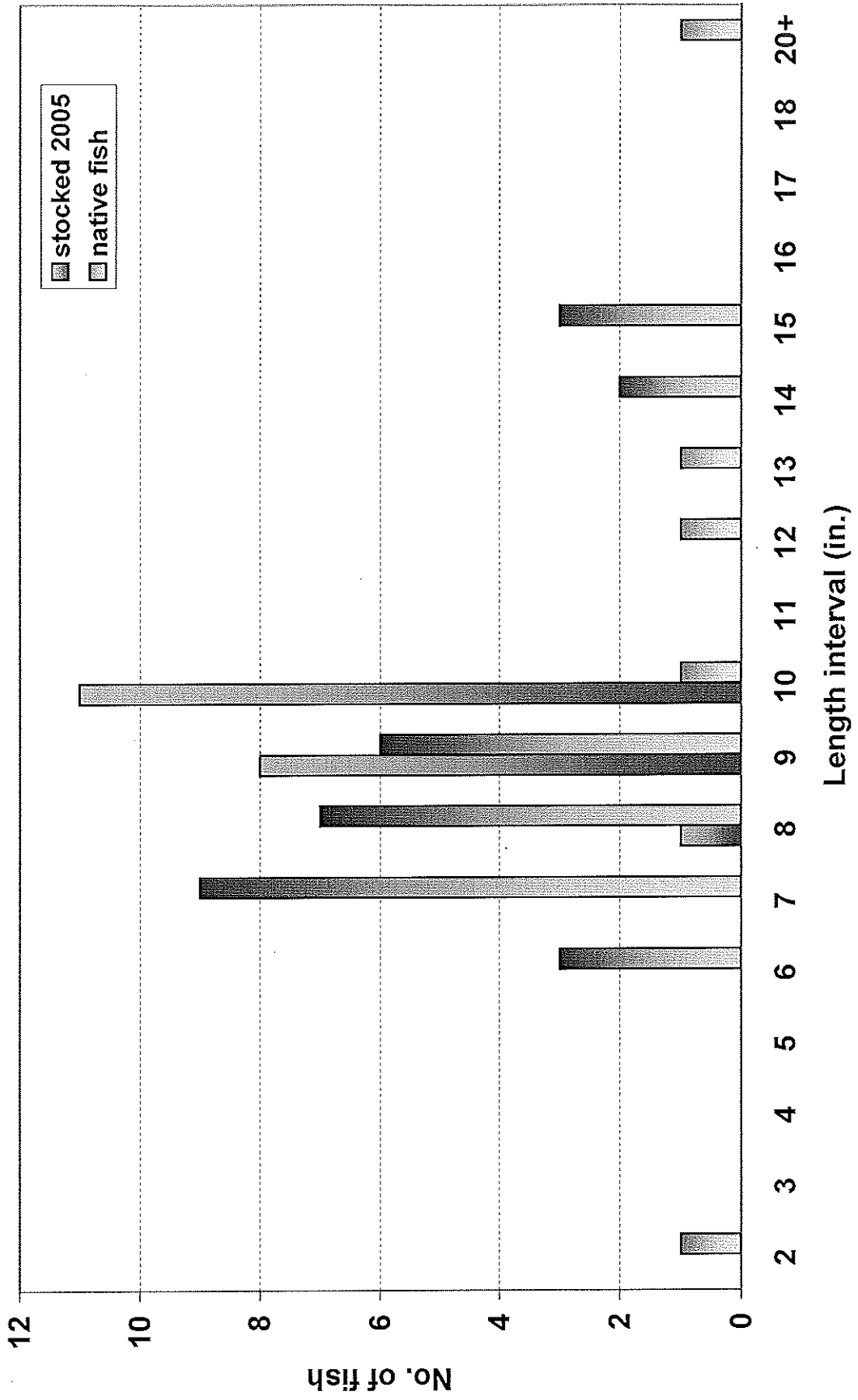


Figure 3. Brown trout size structure in Duncan Creek between the Bloomer dam and Tilden Millpond, July 2005



**Duncan Creek below Bloomer
brown trout length frequency
summer 2007**

Length interval (inches)	No. of fish	
	site 1	site 2
3.0 - 3.4		2
3.5 - 3.9		
4.0 - 4.4		
4.5 - 4.9		
5.0 - 5.4		
5.5 - 5.9		
6.0 - 6.4	2	
6.5 - 6.9	1	
7.0 - 7.4	5	
7.5 - 7.9		
8.0 - 8.4	2	1
8.5 - 8.9	5	
9.0 - 9.4	12	
9.5 - 9.9	4	
10.0 - 10.4	11	
10.5 - 10.9	7	
11.0 - 11.4	2	
11.5 - 11.9		
12.0 - 12.4	1	
12.5 - 12.9		
13.0 - 13.4		
13.5 - 13.9	1	
14.0 - 14.4		
14.5 - 14.9		
15.0 - 15.4	1	
Totals	54	3

Length frequency of brook trout in Duncan Creek between Bloomer dam and Tilden Millpond

site 1 (CTH B)

Length interval (in.)	No. of fish
3.0 - 3.9	
4.0 - 4.9	
5.0 - 5.9	
6.0 - 6.9	
7.0 - 7.9	1
8.0 - 8.9	
9.0 - 9.9	
10.0 - 10.9	
11.0 - 11.9	
12.0 - 12.9	
Total	1

site 2 (CTH Q)

Length interval (in.)	No. of fish
3.0 - 3.9	
4.0 - 4.9	
5.0 - 5.9	
6.0 - 6.9	
7.0 - 7.9	
8.0 - 8.9	4
9.0 - 9.9	
10.0 - 10.9	1
11.0 - 11.9	
12.0 - 12.9	1
Total	6

site 3 (130th. Ave.)

Length interval (in.)	No. of fish
3.0 - 3.9	
4.0 - 4.9	
5.0 - 5.9	1
6.0 - 6.9	2
7.0 - 7.9	4
8.0 - 8.9	
9.0 - 9.9	1
10.0 - 10.9	
11.0 - 11.9	
12.0 - 12.9	
Total	8

site 4 (147th. Ave.)

Length interval (in.)	No. of fish
3.0 - 3.9	
4.0 - 4.9	
5.0 - 5.9	
6.0 - 6.9	
7.0 - 7.9	
8.0 - 8.9	
9.0 - 9.9	
10.0 - 10.9	
11.0 - 11.9	
12.0 - 12.9	
Total	

Stream length surveyed (meters)

443

342

314

289

, July 6, 2005

all sites

Length interval (in.)	No. of fish
3.0 - 3.9	
4.0 - 4.9	
5.0 - 5.9	1
6.0 - 6.9	2
7.0 - 7.9	5
8.0 - 8.9	4
9.0 - 9.9	1
10.0 - 10.9	1
11.0 - 11.9	
12.0 - 12.9	1
Total	15

1,388

Length frequency of brook trout in Little Hay Creek, July 2005

site 1 (CTH C)

site 2 (125th. Ave.)

site 3 (120th. Ave.)

all sites

Length interval (in.)	No. of fish
2.0 - 2.9	2
3.0 - 3.9	
4.0 - 4.9	1
5.0 - 5.9	4
6.0 - 6.9	8
7.0 - 7.9	2
8.0 - 8.9	2
9.0 - 9.9	1
10.0 - 10.9	1
11.0 - 11.9	
Total	21

Length interval (in.)	No. of fish
2.0 - 2.9	
3.0 - 3.9	
4.0 - 4.9	
5.0 - 5.9	
6.0 - 6.9	2
7.0 - 7.9	1
8.0 - 8.9	
9.0 - 9.9	
10.0 - 10.9	
11.0 - 11.9	
Total	3

Length interval (in.)	No. of fish
2.0 - 2.9	
3.0 - 3.9	1
4.0 - 4.9	
5.0 - 5.9	
6.0 - 6.9	4
7.0 - 7.9	5
8.0 - 8.9	2
9.0 - 9.9	1
10.0 - 10.9	1
11.0 - 11.9	3
Total	17

Length interval (in.)	No. of fish
2.0 - 2.9	2
3.0 - 3.9	1
4.0 - 4.9	1
5.0 - 5.9	4
6.0 - 6.9	14
7.0 - 7.9	8
8.0 - 8.9	4
9.0 - 9.9	2
10.0 - 10.9	2
11.0 - 11.9	3
Total	41

Stream length surveyed (meters) 100

100

100

300

Length frequency of brook trout in Creek 13-16 (Tilden Creek), May 2006

site 1

site 2

site 3

all sites

Length interval (in.)	No. of fish
4.0 - 4.9	1
5.0 - 5.9	1
6.0 - 6.9	5
7.0 - 7.9	2
8.0 - 8.9	1
9.0 - 9.9	1
Total	11

Length interval (in.)	No. of fish
4.0 - 4.9	
5.0 - 5.9	
6.0 - 6.9	
7.0 - 7.9	
8.0 - 8.9	
9.0 - 9.9	
Total	0

Length interval (in.)	No. of fish
4.0 - 4.9	
5.0 - 5.9	
6.0 - 6.9	
7.0 - 7.9	
8.0 - 8.9	
9.0 - 9.9	
Total	0

Length interval (in.)	No. of fish
4.0 - 4.9	1
5.0 - 5.9	1
6.0 - 6.9	5
7.0 - 7.9	2
8.0 - 8.9	1
9.0 - 9.9	1
Total	11

Stream length surveyed (meters) 100

100

100

300