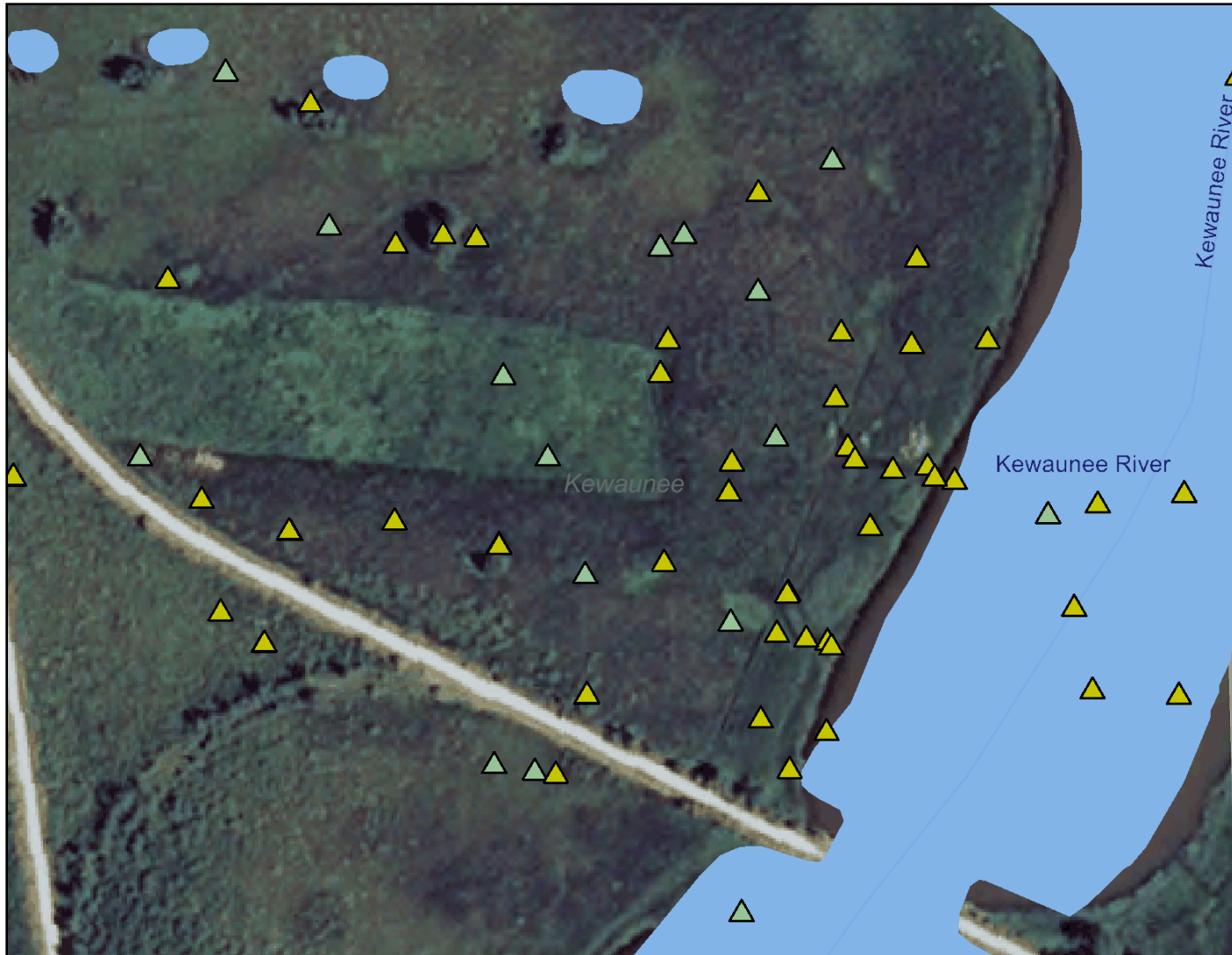


# Kewaunee Marsh Aug 15, 2012



## Legend

### Major Highways

- Interstate
- State Highway
- U.S. Highways
- County Roads
- Local Roads

### SWIMS Monitoring Station Points With Data

- Station with historic data
  - Station with recent data
- ### SWIMS Monitoring Station Points
- Inactive Obsolete
  - New Pending
  - Inactive Pending
  - FHDB Pending
  - Active

### Rivers and Streams

- Intermittent
- Fluctuating
- Perennial
- 24K Open Water

### County Boundary

- Municipality

- Village
- City

0 250 500 750 ft.



Scale: 1:2,548

This map is a user generated static output from an Internet mapping site and is for general reference only. Data layers that appear on this map may or may not be accurate, current, or otherwise reliable. THIS MAP IS NOT TO BE USED FOR NAVIGATION.