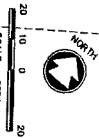


RECORD DRAWINGS
 DRAFTED BY: JMA 12/20/20
 CHECKED BY: JLS

JENNIFER L. SCHAFER
 E-36179
 APPLETON
 WI
 PROFESSIONAL ENGINEER
 LICENSE NO. 14108

STORM WATER POND RECORD DRAWING NOTE:
 THE CONTOURS SHOWN ARE THE MINIMUM REQUIRED
 POND SIZE PER DESIGN. THE ACTUAL REQUIRED
 POND SIZE FOLLOWING CONSTRUCTION ARE SHOWN. THE
 SIZE GREATER THAN THE MINIMUM REQUIRED PER
 DESIGN.



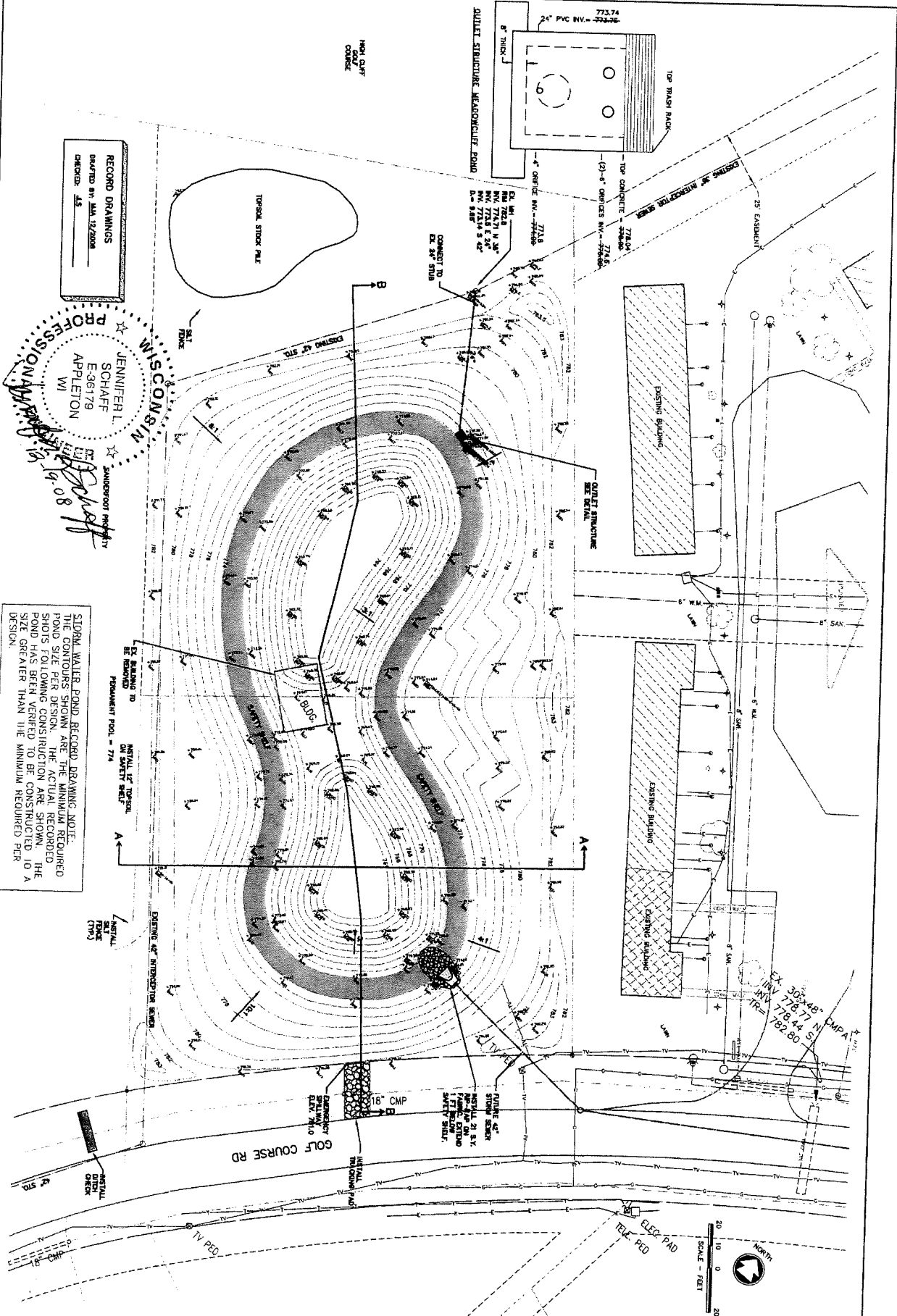
**MEADOWCLIFF POND
 VILLAGE OF SHERWOOD, WI
 POND LAYOUT**

SCALE	1" = 20'
DRAWN BY	JMA
DATE	12/20/20
PROJECT NO.	50017-950447.02
SHEET NO.	1

DESIGNED	JLS
CHECKED	JLS
IN CHARGE	JLS
DATE	12/20/20

McMATH ASSOCIATES, INC.
 ENGINEERS
 ARCHITECTS
 PLANNERS
 SURVEYORS
 1445 Shelburne Drive
 Marsh, WI 54854
 P.O. Box 1022 Marsh, WI 54857-1025
 TEL: 820-731-4200 FAX: 820-731-4284

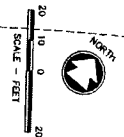
NO.	DATE	REVISION



RECORD DRAWINGS
 DATED BY: M.A. 12/20/06
 CHECKED BY: J.S.

JENNIFER L. SCHAFF
 E-36179
 APPLETON
 WI
 PROFESSIONAL ENGINEER
 12/19/06

STORM WATER POND RECORD DRAWING NOTE:
 THE CONTOURS SHOWN ARE THE MINIMUM REQUIRED
 POND SIZE PER DESIGN. THE ACTUAL RECORD
 SHOTS FOLLOWING CONSTRUCTION ARE SHOWN. THE
 POND HAS BEEN VERIFIED TO BE CONSTRUCTED TO A
 SIZE GREATER THAN THE MINIMUM REQUIRED PER
 DESIGN.



MEADOWCLIFF POND
 VILLAGE OF SHERWOOD, WI
 POND LAYOUT

SCALE	1" = 20'
DATE	OCT 1, 2005
PROJECT NO.	50017-950447.02

DESIGNED	J.S.
DRAWN	J.S.
CHECKED	CNC
DATE	

McMAHON ENGINEERS & ARCHITECTS
ASSOCIATES, INC.
 1443 Matheson Drive, Kenosha, WI 53142
 P.O. Box 1025, Kenosha, WI 53102-1025
 TEL: 820-731-4200 FAX: 820-731-4364

NO.	DATE	REVISION