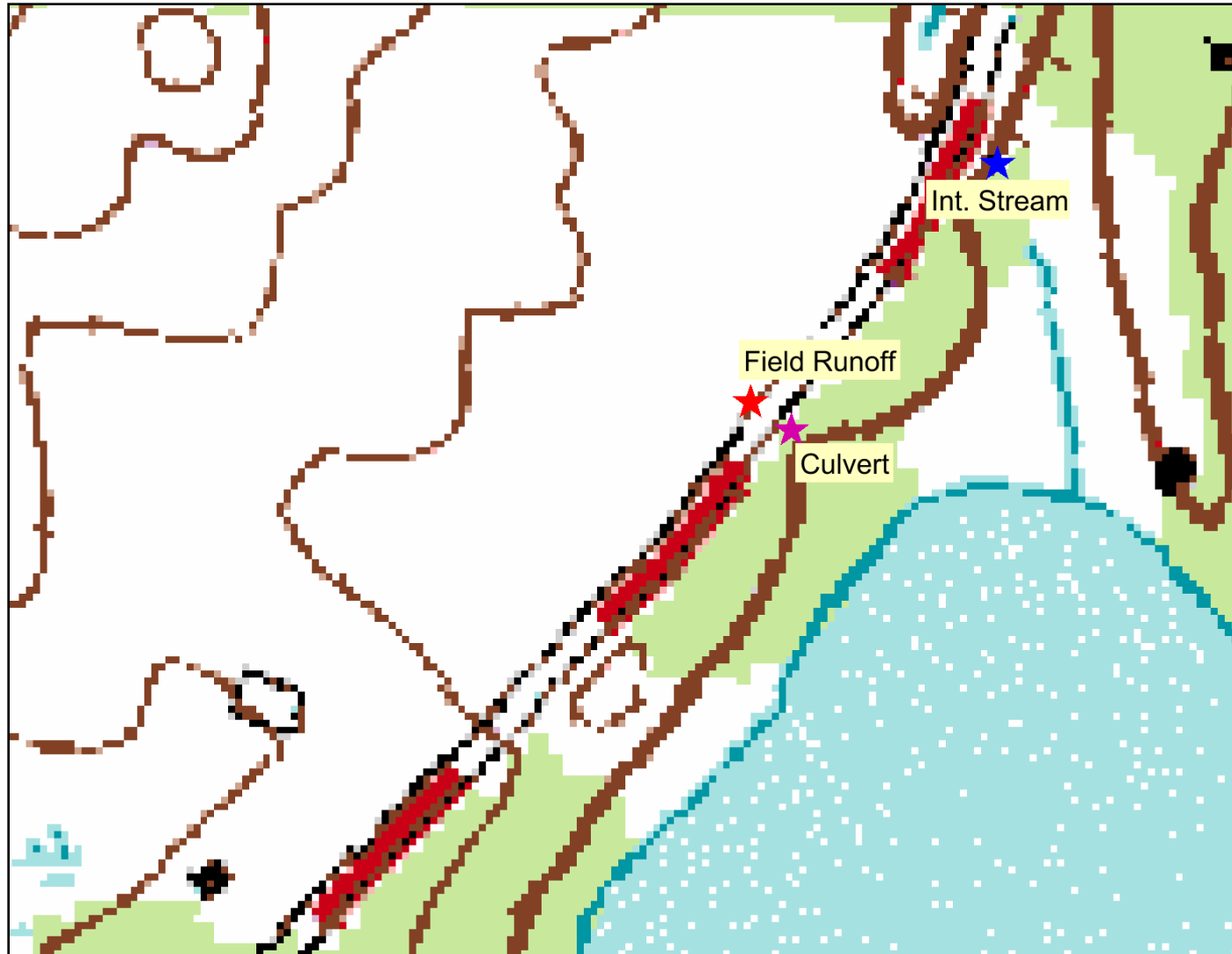


Butternut Runoff Sample Locations October 26 & 27, 2010



Legend

Major Highways

-  Interstate
-  State Highway
-  U.S. Highways

0 225 450 675 ft.

Map created on Dec 1, 2010



Scale: 1:2,412

Wisconsin Wetland Inventory (WWI) maps show graphic representations of the type, size and location of wetlands in Wisconsin. These maps have been prepared from the analysis of high altitude imagery in conjunction with soil surveys, topographic maps, previous wetland inventories and field work. State statutes define a wetland as "an area where water is at, near or above the land surface long enough to be capable of supporting aquatic or hydrophytic vegetation and which has soils indicative of wet conditions." The principal focus of the WWI is to produce wetland maps that are graphic representations of the type, size and location of wetlands in Wisconsin. Within this context, the objective of the WWI is to produce reconnaissance level information on the location, type, size of these habitats such that they are accurate at the nominal scale of the 1:24,000 (1 inch = 2000 feet) base map. The DNR recognizes the limitations of using remotely sensed information as the primary data source. They are to be used as a guide for planning purposes. There is no attempt, in either the design or products of this inventory, to define the limits of jurisdiction of any Federal, State, or local government or to establish the geographical scope of the regulatory programs of government agencies. Persons intending to engage in activities involving modifications within or adjacent to wetland areas should seek the advice of appropriate Federal, State, or local agencies concerning specified agency regulatory programs and jurisdictions that may affect such activities. The most accurate method of determining the legal extent of a wetland for federal or state regulations is a field delineation of the wetland boundary by a professional trained in wetland delineation techniques.