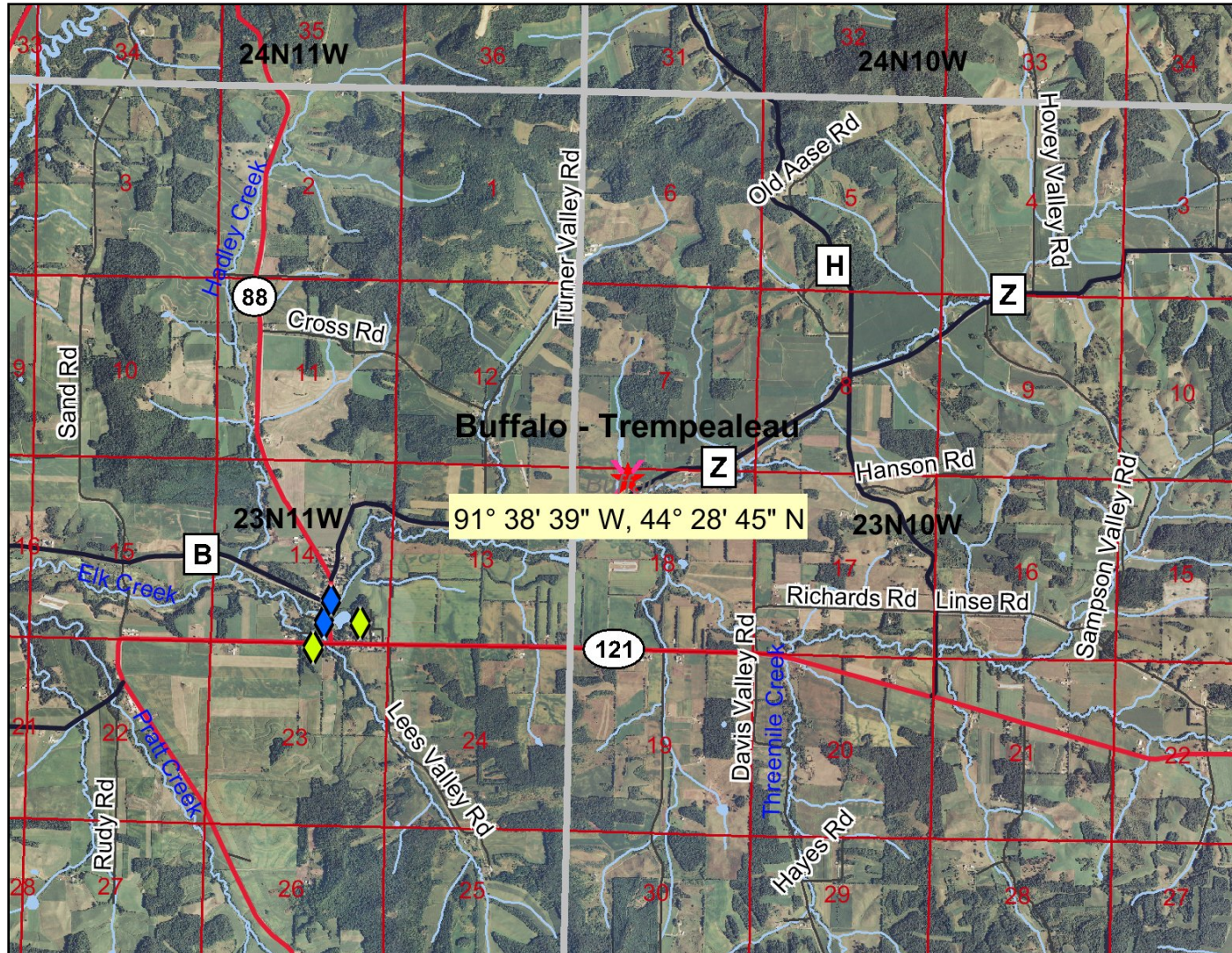


# Buffalo Cnty-Ron Hovey Barnyard & Crossing-Sep 22, 2010



- ### Legend
- Contamination came from another property
  - Groundwater contamination only
  - ◆ Open Sites (ongoing cleanups)
  - ◆ Closed Sites (completed cleanups)
  - County Boundary
  - PLSS Townships
  - PLSS Sections
  - ✕ Railroads
  - County Roads (WDOT)
  - County Trunk Highway
  - State and U.S. Highways (WDOT)
  - State Trunk Highway
  - US Highway
  - Interstate Highways (WDOT)
  - Interstate Highway
  - Local Roads (WDOT)
  - DNR Water Mgmt Units
  - Civil Towns
  - Civil Town
  - 24K Open Water
  - 24K Rivers and Shorelines
  - Municipalities

0 5500 11000 16500 ft.

Map created on Sep 22, 2010

Note: Not all RR Sites have been geo-located yet.



Scale: 1:58,962

This map is a user generated static output from an Internet mapping site and is for general reference only. Data layers that appear on this map may or may not be accurate, current, or otherwise reliable. THIS MAP IS NOT TO BE USED FOR NAVIGATION.