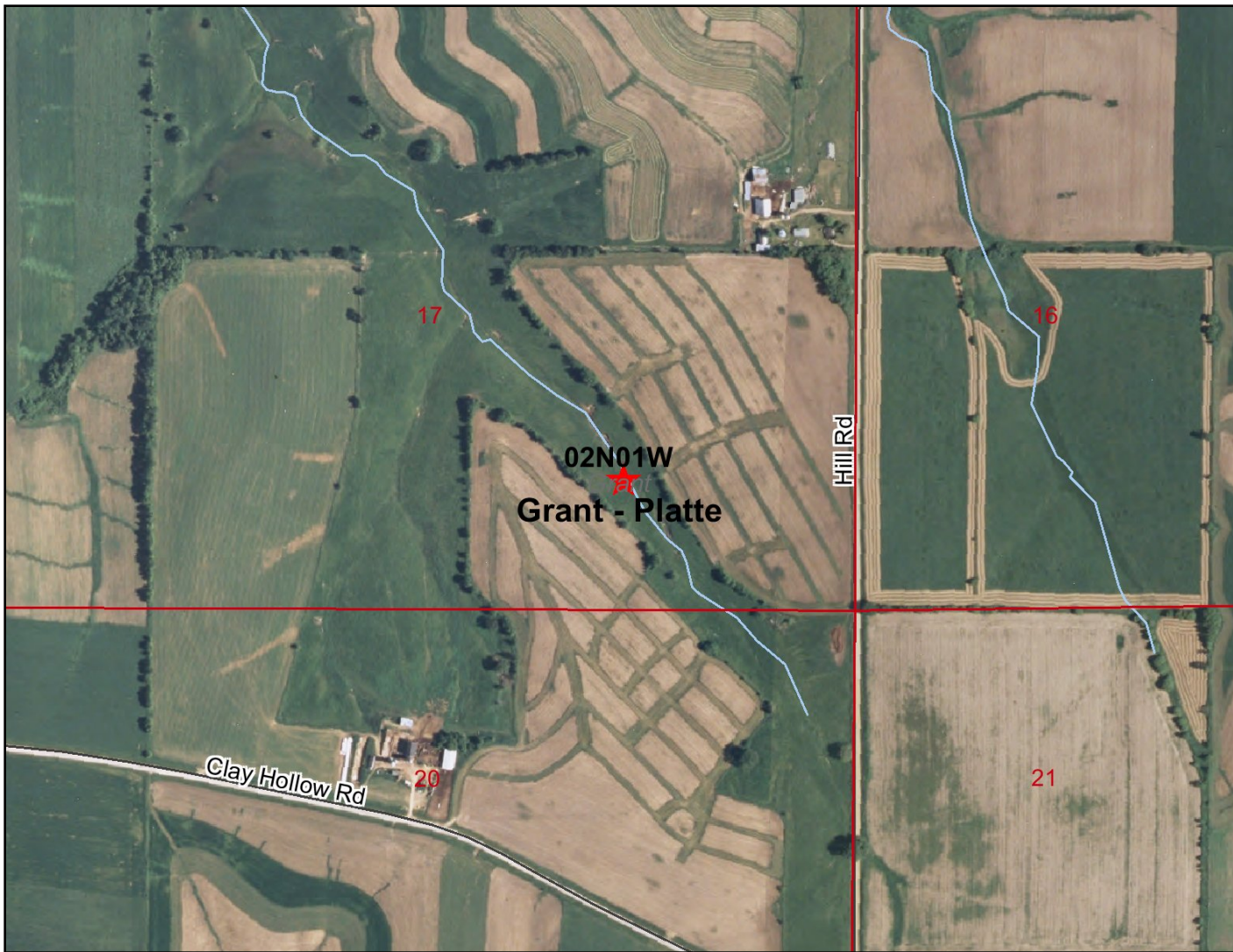
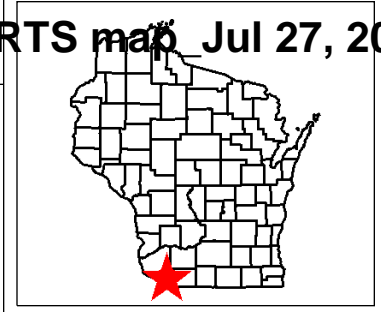


Grant Cnty-Snowden Brnch-#1-George Lazarus property-BRRTS map Jul 27, 2009



Legend

- Contamination came from another property
- ▲ Soil contamination only
- Groundwater and Soil contamination
- Groundwater contamination only
- ◆ Open Sites (ongoing cleanups)
- Open Sites (ongoing cleanups) - site boundaries shown
- ◆ Closed Sites (completed cleanups)
- Closed Sites (completed cleanups) - site boundaries shown
- County Boundary
- PLSS Townships
- PLSS Sections
- ✕ Railroads
- County Roads (WDOT)
- County Trunk Highway
- State and U.S. Highways (WDOT)
- State Trunk Highway
- US Highway
- Interstate Highways (WDOT)
- Interstate Highway
- Local Roads (WDOT)
- DNR Water Mgmt Units
- DNR Major Basins



Map created on Jul 27, 2009
 Note: Not all RR Sites have been geo-located yet.



This map is a user generated static output from an Internet mapping site and is for general reference only. Data layers that appear on this map may or may not be accurate, current, or otherwise reliable. THIS MAP IS NOT TO BE USED FOR NAVIGATION.