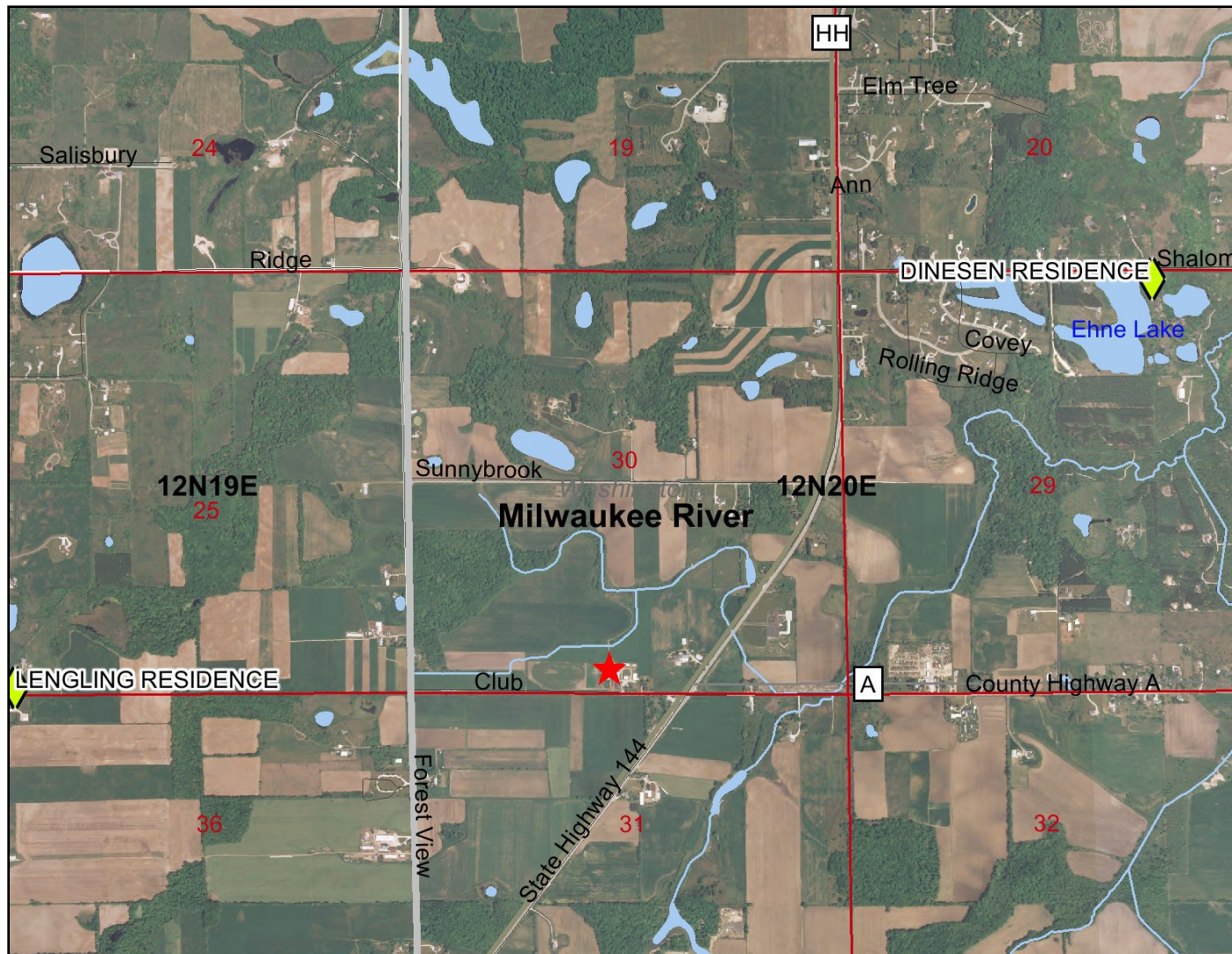


Washington Cnty-Ramthun Manure Storage_Mar 10, 2009



Legend

- Contamination came from another property
- ▲ Soil contamination only
- Groundwater and Soil contamination
- Groundwater contamination only
- ◆ Open Sites (ongoing cleanups)
- Open Sites (ongoing cleanups) - site boundaries shown
- ◆ Closed Sites (completed cleanups)
- Closed Sites (completed cleanups) - site boundaries shown
- County Boundary
- PLSS Townships
- PLSS Sections
- ✕ Railroads
- Major Highways
- Interstate
- US Highway
- State Highway
- Local Roads
- DNR Water Mgmt Units
- Civil Towns
- Civil Town
- 24K Open Water
- 24K Rivers and Shorelines

0 2500 5000 7500 ft.

Map created on Mar 10, 2009

Note: Not all RR Sites have been geo-located yet.



Scale: 1:25,660

This map is a user generated static output from an Internet mapping site and is for general reference only. Data layers that appear on this map may or may not be accurate, current, or otherwise reliable. THIS MAP IS NOT TO BE USED FOR NAVIGATION.