

2008 Impaired Waters Documentation Sheet

Author: Candy Schrank, Carolyn Betz, Lisa Helmuth		Date Prepared: 11/26/07, 12/12/07	
Waterbody Name: Chippewa River, various counties		Watershed Code and Name: Multiple	
WADRS ID: segments 1-7 of river wbic	WBIC: 2050000	If you don't know the ID numbers, go to { HYPERLINK "http://dnrintranetmaps.enterprise.wistate.us/imf/imf.jsp?site=watershed" } (CTRL + Click) to find them.	
Choose from the following to indicate what you are recommending:			
<input type="checkbox"/> Proposed new listing			
<input type="checkbox"/> Proposed for special project monitoring (need more data)			
<input checked="" type="checkbox"/> Proposed changes for water already on 303(d) list (check type of change below) → TMDL ID Number: <u>615, 675, 77,78,79</u>			
<input type="checkbox"/> Proposed change to existing list (new pollutants, impairments, mileages, etc)			
<input checked="" type="checkbox"/> Proposed for de-listing (a report may be needed depending on the reasons) Hg specific advisories for first 105 miles of river are no longer valid due to new monitoring data. These advisories and the associated 303d listing are proposed for delisting.			
<input type="checkbox"/> General 303d documentation for water already on list			
Description of waterbody segment			
Start Mile: <u> 0 </u>	Detail (describe segment using road crossings, convergence with other waterbodies, etc.):		
End Mile: <u> 105 </u>	Consolidate listing for FCA for PCBs (specific advisory) for the impaired water category of contaminated sediment for first seven segment sof the river -- downstream of the dam at Holcombe to the confluence with the Mississippi River. Use TMDL ID 80 for all segments for this listing -- as the one to consolidate the Chippewa River- FCA for PCBs.		
Total miles: <u> 105 </u>			
Lake Acres: <u> </u>			
Use Designation Categories		List use designation & data source for each category.	
Current (Existing) Fish & Aquatic Life Use: (Aquatic Community)		<u> WWSF </u>	
Attainable (Potential) Fish & Aquatic Life Use: (Aquatic Community)		<u> WWSF </u>	
Designated (Codified) Fish & Aquatic Life Use:		<u> DEFAULT/WWSF </u>	
Is it supporting its Attainable Use? <input type="checkbox"/> Fully supporting <input type="checkbox"/> Partially supporting <input checked="" type="checkbox"/> Not supporting			
Does a <i>Specific</i> Fish Advisory Exist? (This is different from the statewide mercury advisory.) <input type="checkbox"/> Yes <input checked="" type="checkbox"/> No <input type="checkbox"/> Don't know			
If so, what is the specific advisory: SPECIFIC ADVISORY FOR MERCURY FOR RIVER MILEs 0-105 NO LONGER EXISTS. SPECIFIC ADVISORY FOR PCBs FOR RIVER MILES 0-105 Does EXIST AND ITEMS ARE CONSOLIDATED INTO ONE IMPAIRED WATER LISTING under Impaired Waters ID #80.			
Pollutants & Impairments			
Pollutants (Place an X next to all pollutants that you are recommending for listing, de-listing or monitoring needs. If you are recommending adding a new pollutant to a waterbody that is already on the list, write ADD.)			
<input type="checkbox"/> Phosphorus	<input type="checkbox"/> Sediment	<input type="checkbox"/> Bacteria	<input type="checkbox"/> PAHs
		<u> Delist </u> Hg	
<input type="checkbox"/> NH3 (Ammonia)	<input type="checkbox"/> Thermal (elevated temp.)	From specific advisory from atm dep category	<input type="checkbox"/> Creosote
Other Pollutants:			<input type="checkbox"/> Metals
Impairments (Place an X next to all impairments that you are recommending for listing, delisting, or monitoring needs. If you are recommending adding a new pollutant to a waterbody that is already on the list, write ADD.)			
<input type="checkbox"/> Degraded Habitat	<input type="checkbox"/> Eutrophication	<input type="checkbox"/> Temperature	
<u> DELIST </u> Contaminated Fish Tissue from Hg	<input type="checkbox"/> Chronic Toxicity	<input type="checkbox"/> Aquatic Toxicity	

Low Dissolved Oxygen

Aquatic Invasives

Other Impairments:

Source of impairment (Place an X next to the source category.) if you need an explanation of source categories, see { [HYPERLINK "http://dnr.wi.gov/org/water/wm/wqs/303d/categories.html"](http://dnr.wi.gov/org/water/wm/wqs/303d/categories.html) } .

NPS Dominated

NPS/Pt. Source Blend

Point Source

Contaminated Sediment change from PCBs from atm to this category.

Atmospheric Deposition delisted category

Physical Habitat

Unknown

Other: _____

Specific causes of impairment (Describe to the best of your ability what you think is contributing to the impairment.)

Historic deposition of PCB-laden contaminated sediment and diffusion and bioaccumulation of organic contaminant in fish tissue resulting in specific fish advice for selected groups and species in the Chippewa River.

Information is based on:

Monitoring data (specific data) less than 5 years old

Evaluated data (data more than 5 years old)

Map

When possible, please create a map of your waterbody and submit it with this form. It is easy to create a 8.5 x 11 map of the area you are describing. Go to the go to the Intranet Surface Water Viewer {[HYPERLINK "http://dnrintranetmaps.enterprise.wistate.us/imf/imf.jsp?site=watershed"](http://dnrintranetmaps.enterprise.wistate.us/imf/imf.jsp?site=watershed)} (CTRL + Click). Choose "Find Location" to find the waterbody, then "Layers" to choose "Standards, Monitoring and Assessment". If it is already on the 303(d) list, then click "Impaired Waters 303d". If you want to show the monitoring stations, also click on "SWIMS Station Points". Then choose "Print" (this will create a pdf map), add a title under "Map Title" and your name and date under "Map Notes", click "OK" and then "Open Map" at the next screen. Save the file and attach it when you send in this sheet. For additional help on how to make a map, check out page 12-14 on the website {[HYPERLINK "http://www.dnr.state.wi.us/org/water/SWDV/help/documents/SWDV_Basic_User_Guide_%209_07.pdf"](http://www.dnr.state.wi.us/org/water/SWDV/help/documents/SWDV_Basic_User_Guide_%209_07.pdf)}

Monitoring & Listing Data

1. Monitoring Study, Date, Results. List water quality exceedences indicating magnitude, duration and frequency.

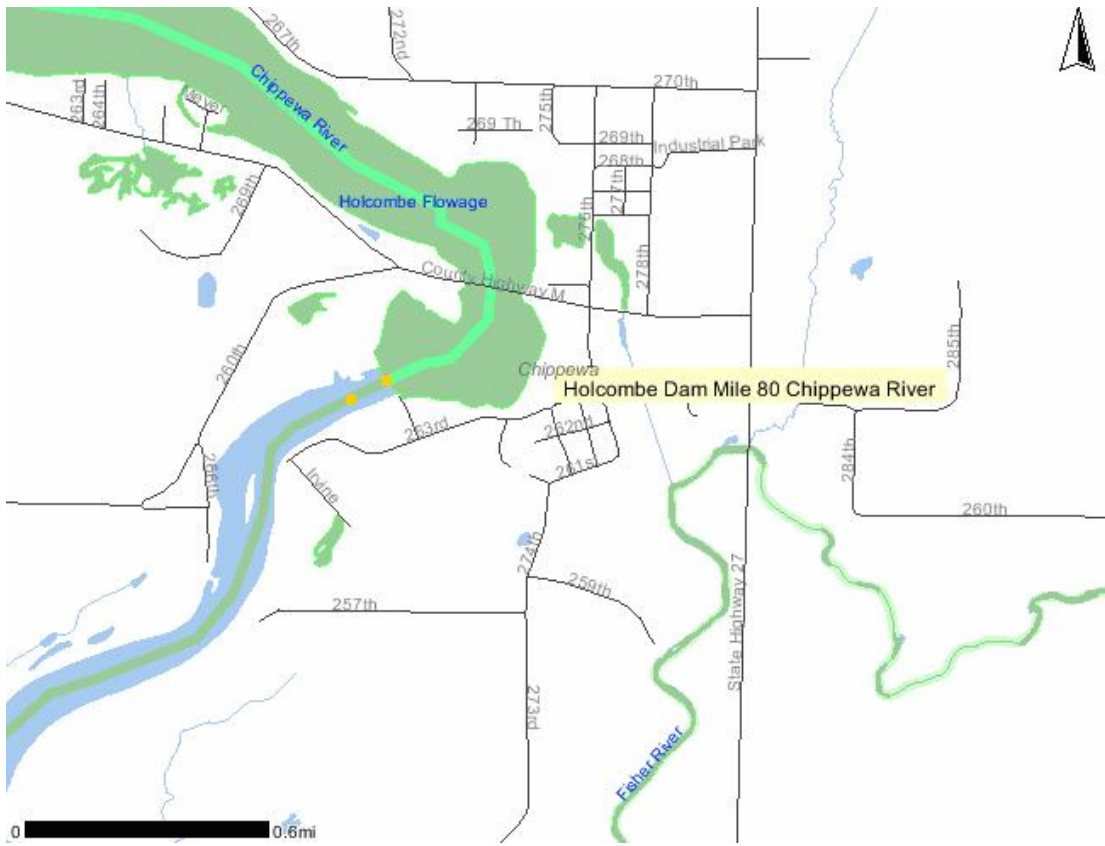
We have new data for 13 sites from the Chippewa River in order of upstream to downstream

2001/2003/2004/2005 Lake Chippewa Flowage
2003 upstream of Holcombe at Hwy D,
2002 Holcombe Flowage,
2000 Cornell Flow,
2003 Old Abe,
2001 downstream of Jim Falls Dam,
2000/2001/2002/2005 Lake Wissota,
2001 Chipewa Falls Flowage,
2001/03/04 downstream of Chippewa Falls Dam,
2005 upstream of Dells Pond at new STH 29 bridge,
2000 above Dells Dam,
2001/2003/2004/2005 below Dells Dam,
2000 downstream of mouth of Red Cedar River,
2003/2005 at Durand

Stations:

Parameters:

Database where data is stored (Fish Database, SWIMS, FishSED, Personal PC):



Most upstream portion of TMDL ID listing 80 for PCBs.
(Mile 0 through 105 – first five segments of river).

Segment 1 (Mile 0-19)

Chippewa River Mainstem Mouth to lower end of Nine Mile Slough 1 20.73 0 20.73

303D Categories							Create New 303d Category		
	Impaired Water ID	Date Listed	Impairment	Pollutant	Category	Impaired Water Status	Impaired Water Priority	Document Exist?	
	80	04/01/2008	Contaminated Fish Tissue	PCBs	Contam. Sediment	Proposed Change to Listing		No	
	78	04/01/1998	Contaminated Fish Tissue	Mercury	Contam. Sediment	Proposed Delist		Yes	
	78	04/01/1998	Contaminated Fish Tissue	Mercury	Atm. Deposition	Proposed Delist		Yes	

Segment 2

Chippewa River Lower end of Ninemile Slough to Muddy Creek 2 16.85 20.73 37.58

Assessment ID	1138353
Unit ID	304733
WBIC	2050000
Segment	2
Waterbody Name	CHIPPEWA RIVER (Chippewa River)
Current Assessment Cycle	01/01/2006 - 12/31/2007
Assessment Date	01/01/2006
Assessment Status	COPIED_FORWARD:UNCHANGED
Assessed By	
Assessment Level	Monitored
EPA Category	
DNR Category	Category 5A
Trophic Status	TSI Not Applicable to Non-Lake
Non-Point Source Rank	Not Ranked
Monitoring Sched. Date	
Expected To Attain Date	
Cumulative Exotic Impact	
Water Quality Trend	UNKNOWN
WQ Trend Comments	TMDL ID 615 changed to "80" to consolidate with downstream and upstream segments.
Field Notes	2004 303d list, footnote 6: "Fish consumption advisory for sturgeon. Likely associated with downstream contaminated sediment. Will handle in conjunction with TMDL for downstream segment."
Last Updated	12/11/2007
Last Updated By	helmul

Stations		
Station ID	Station Name	Previous Water ID
	10014375 CHIPPEWA RIVER - LOWER 9 MILE SLOUGH TO DURAND BOAT LANDING	Chippewa
	10013291 CHIPPEWA RIVER 3B, DURAND GET	Chippewa
	10009548 CHIPPEWA RIVER-NINE MILE SLOUGH	Chippewa
	10021193 CHIPPEWA RIVER- VORTEX TO RED CEDAR RIVER CONFLUENCE	Chippewa
	10013552 CHIPPEWA RIVER VORTEX	Chippewa
	10009861 CHIPPEWA RIVER - DUSCHAM CR., STATION 1, 650TH ST.	Chippewa
	10018049 CHIPPEWA RIVER ACCESS - 730TH ST, TOWN OF PERU	Chippewa

Water Quality Excursions		
Criteria Exceedance	Exceedance Date	Comments

Assessment Parameters				
Parameter	Date	Comment	Station ID	Station Name

303D Categories						
Impaired Water ID	Date Listed	Impairment	Pollutant	Category	Impaired Water Status	Impaired Water Priority
80	04/01/1998	Contaminated Fish Tissue	PCBs	Contam. Sediment	Proposed Change to Listing	Low Priority

Resources of Interest (Mapped Areas)			
Code	Name	Status	Type

Segment 3:

Chippewa River Muddy Creek to Eau Claire River in Eau Claire 3 21.26 37.58 58.84

Assessment ID	1150791	Stations		Previous	1-10 of 29	Next			
Unit ID	889277	Station ID	Station Name	Water Body WBIC					
WBIC	2050000	10009551	CHIPPEWA RIVER LCR#1AGET	Chippewa River	2050000				
Segment	3	10020888	LOWES CREEK AT BIKE PATH NEAR CHIPPEWA RIVER	Lowes Creek	2123900				
Waterbody Name	CHIPPEWA RIVER (Chippewa River)	10017250	CHIPPEWA RIVER-16E	Chippewa River	2050000				
Current Assessment Cycle	01/01/2006 - 12/31/2007	10016938	CHIPPEWA RIVER - ON WEST BANK AT DOWNSTREAM END OF LARGE ISLAND. 14W	Chippewa River	2050000				
Assessment Date	01/01/2006	10016914	CHIPPEWA RIVER - 9700 FEET BELOW HWY 94 BRIDGE AT DOWNSTREAM END OF LARGE ISLAND. 14E	Chippewa River	2050000				
Assessment Status	IN_PROGRESS	10016909	CHIPPEWA RIVER - NEAR DAVEY HOME, MIDWAY ALONG LARGE ISLAND ON WEST BANK. 12W	Chippewa River	2050000				
Assessed By	BETZC	10016748	CHIPPEWA RIVER - ON WEST RIVER BANK ACROSS FROM UPSTREAM END OF ISLAND. 10W	Chippewa River	2050000				
Assessment Level	Monitored	10014369	CHIPPEWA RIVER - SPRING BROOK TO VORTEX	Chippewa River	2050000				
EPA Category		10013546	CHIPPEWA RIVER-LAKE STREET. EAU CLAIRE	Chippewa River	2050000				
DNR Category	Category 5A	165	CHIPPEWA RIVER - BELOW EAU CLAIRE	Chippewa River	2050000				
Trophic Status	TSI Not Applicable to Non-Lake	Water Quality Excursions							
Non-Point Source Rank	Not Ranked	Criteria Exceedance	Exceedance Date	Comment					
Monitoring Sched. Date		Assessment Parameters							
Expected To Attain Date		Parameter	Date	Comment	Station ID	Station Name			
Cumulative Exotic Impact		303D Categories							
Water Quality Trend	UNKNOWN	Impaired Water ID	Date Listed	Impairment	Pollutant Category	Impaired Water Status	Impaired Water Priority	Documents Exist?	
WQ Trend Comments	Proposed change in TMDL ID from 615 to TMDL 80 for PCBs.	80	04/01/1998	Contaminated Fish Tissue	PCBs	Contam. Sediment	Proposed Change to Listing	Low Priority	Yes
Field Notes	2004 303d list, footnote 6: "Fish consumption advisory for sturgeon. Likely associated with downstream contaminated sediment. Will handle in conjunction with TMDL for downstream segment."	Resources of Interest (Mapped Areas)							
Last Updated	12/11/2007								
Last Updated By	helmul								

Segment 4:

Chippewa River near Eau Claire Eau Claire River to Dells Dam 4 1.21 58.84 60.05

WBIC	2050000	Station ID	Station Name	Water Body					
Segment	4	183034	EAU CLAIRE RIVER - WALTERS BREWING CO EAU CLAIRE	Eau Claire River					
Waterbody Name	CHIPPEWA RIVER (Chippewa River (at Eau Claire))	183061	BROWN CO WWTP OF-002	Chippewa River					
Current Assessment Cycle	01/01/2006 - 12/31/2007	10009552	CHIPPEWA RIVER LCR#11B1	Chippewa River					
Assessment Date	01/01/2006	10009551	CHIPPEWA RIVER LCR#1AGET	Chippewa River					
Assessment Status	COMPLETE	10009550	CHIPPEWA RIVER LCR#11B1	Chippewa River					
Assessed By	UNKNOWN	183057	CHIPPEWA RIVER - @ NSP DELLS DAM TAILRACE	Chippewa River					
Assessment Level	Monitored	183023	CHIPPEWA RIVER-DELLS POND - ABOVE NSP DAM /ACROSS FROM MT. SIMON PARK	Chippewa River					
EPA Category		183135	CHIPPEWA RIVER - DELLS DAM	Chippewa River					
DNR Category	Category 5A	183022	CHIPPEWA RIVER - BROWN PAPER FLUME BL DAM	Chippewa River					
Trophic Status	TSI Not Applicable to Non-Lake	183058	CHIPPEWA RIVER - BENEATH NSP DAM	Chippewa River					
Non-Point Source Rank	Not Ranked	Water Quality Excursions							
Monitoring Sched. Date		Criteria Exceedance	Exceedance Date	Comment					
Expected To Attain Date		Assessment Parameters							
Cumulative Exotic Impact		Parameter	Date	Comment	Station ID	Station Name			
Water Quality Trend	UNKNOWN	303D Categories							
WQ Trend Comments	Changed TMDL from 79 to 80 for PCBs / Fish Consumption Advisory downstream of Holcombe Flowage.	Impaired Water ID	Date Listed	Impairment	Pollutant Category	Impaired Water Status	Impaired Water Priority	Docs Exist	
Field Notes	2004 303d list, footnote 6: "Fish consumption advisory for sturgeon. Likely associated with downstream contaminated sediment. Will handle in conjunction with TMDL for downstream segment."	80	04/01/1998	Contaminated Fish Tissue	PCBs	Contam. Sediment	Proposed Change to Listing	Low Priority	Yes
Last Updated	12/11/2007	79	04/01/1998	Contaminated Sediment	Unspecified Metals	Contam. Sediment	303d Listed	Low Priority	Yes
Last Updated By	helmul								

Segment 5:

Chippewa River Holcombe downstream to Dells dam at Eau Claire

Dells Dam in Eau Claire to Wissota Dam near Chippewa Falls

5 16.99 **60.05** **77.04**

Segment 5
Waterbody Name CHIPPEWA RIVER (Chippewa River)
Current Assessment Cycle 01/01/2006 - 12/31/2007
Assessment Date 01/01/2006
Assessment Status COPIED_FORWARD:UNCHANGED
Assessed By
Assessment Level <u>Monitored</u>
EPA Category
DNR Category <u>Category 5A</u>
Trophic Status <u>TSI Not Applicable to Non-Lake</u>
Non-Point Source Rank <u>Not Ranked</u>
Monitoring Sched. Date
Expected To Attain Date
Cumulative Exotic Impact
Water Quality Trend <u>UNKNOWN</u>
WQ Trend Comments Proposed Delist of Mercury / FCA for this segment - changed category from ATM Dep to Contaminated Sediment for consistency.
Field Notes
Last Updated 12/12/2007
Last Updated By helmul

093002 CHIPPEWA RIVER - PACKERLAND PACKING CO CHIP FALLS Chippewa Falls Flowage 2
093004 CHIPPEWA RIVER - AMOCO CHEM CORP CHIPPEWA FALLS Chippewa Falls Flowage 2
183061 BROWN CO WWTP OF-002 Chippewa River 2
093019 CHIPPEWA RIVER - CHIPPEWA FALLS STP Chippewa Falls Flowage 2
093006 CHIP FALLS STORM DEMO PROJ OUTFA N
093164 CHIPPEWA RIVER - CHIP, FALLS FLOWAGE - CHIP, FALLS FLOWAGE Chippewa Falls Flowage 2
10018156 DELLS POND - DELLS POND ACCESS N
10009552 CHIPPEWA RIVER LCR#11BI Chippewa River 2
10009550 CHIPPEWA RIVER LCR#11BI Chippewa River 2
183057 CHIPPEWA RIVER - @ NSP DELLS DAM TAILRACE Chippewa River 2

Water Quality Excursions		
Criteria Exceedance	Exceedance Date	Comment

Assessment Parameters				
Parameter	Date	Comment	Station ID	Station Name

303D Categories							
Impaired Water ID	Date Listed	Impairment	Pollutant Category	Impaired Water Status	Impaired Water Priority	Docum Exist?	
80	04/01/2002	Contaminated Fish Tissue	PCBs	Contam. Sediment	Proposed Change to Listing	Low Priority	Yes
80	04/01/2002	Contaminated Fish Tissue	Mercury	Atm. Deposition	Proposed Delist	Low Priority	Yes

[Back](#) | [Uses](#) | [A15/Habitat](#) | [Monitoring and Listing](#) | [Enable Edit](#) | [Download](#)

Segment 6

Lake Wissota

River length in Lake Wissota

6 3.14 **77.04** **80.18**

Assessment Level <u>Monitored</u>
EPA Category
DNR Category <u>Category 5A</u>
Trophic Status <u>TSI Not Applicable to Non-Lake</u>
Non-Point Source Rank <u>Not Ranked</u>
Monitoring Sched. Date
Expected To Attain Date
Cumulative Exotic Impact
Water Quality Trend <u>UNKNOWN</u>
WQ Trend Comments Proposed Delisting for Mercury FCA under ID 80 - change category for ID 80 from atm. dep. to contam. sediment.
Field Notes 28 08W 03 SE NW
Last Updated 12/12/2007
Last Updated By helmul

Water Quality Excursions		
Criteria Exceedance	Exceedance Date	Comment

Assessment Parameters				
Parameter	Date	Comment	Station ID	Station Name

303D Categories							
Impaired Water ID	Date Listed	Impairment	Pollutant	Category	Impaired Water Status	Impaired Water Priority	Docum Exist?
80	04/01/1998	Contaminated Fish Tissue	Mercury	Contam. Sediment	Proposed Change to Listing	Low Priority	Yes
80	04/01/1998	Contaminated Fish Tissue	Mercury	Atm. Deposition	Proposed Delist	Low Priority	Yes
538	04/01/1998	Degraded Habitat, Excess Algal Growth	Sediment	PS/NPS Blend	303d Listed	Medium Priority	Yes
538	04/01/1998	Excess Algal Growth, pH	Total Phosphorus	PS/NPS Blend	303d Listed	Medium Priority	Yes

[Back](#) | [Uses](#) | [A15/Habitat](#) | [Monitoring and Listing](#) | [Enable Edit](#) | [Download](#)

Segment 7:

Chippewa River Holcombe
downstream to Dells dam at Eau
Claire

Lake Wissota inlet to
Holcombe Dam

7

25.57

80.18

105.75

ID	889529
WBIC	2050000
Segment	7
Official Waterbody Name	CHIPPEWA RIVER
Local Waterbody Name	Chippewa River
Water Type	RIVER
Start Mile	80.18
End Mile	105.75
Size	25.57
Measurement Unit	MILES
Current Assessment Cycle	01/01/2006 - 12/31/2007
First Assessed Date	12/09/2005
Last Assessment Date	01/01/2006
Last Assessed By	W23321
Current Assessment Status	COPIED_FORWARD:UNCHANGED
Expected To Attain Date	
ORW/ERW	
ORW/ERW ID	
303d List?	Yes
Trout Class	
Trout ID	
Fed Wild Scenic Flag?	
Assessment Unit Comments	TMDL ID = 80 (in part) This AU: Lake Wissota inlet to Holcombe Dam.
Last Updated	11/08/2007
Last Updated By	helmul

Map interface with navigation tools and buttons: Save Feature, Delete Feature.

[Back to Browse](#) | [AU Location](#) | [Watershed Detail](#) | [Waterbody Detail](#)

Cumulative Exotic Impact

Water Quality Trend	UNKNOWN
WQ Trend Comments	Proposed delisting of Hg FCA and change of PCB listing to contaminated sediment category (versus Atm. Dep).
Field Notes	28 08W 03 SE NW
Last Updated	12/12/2007
Last Updated By	helmul

093016	CHIPPEWA RIVER-CORNELL FLOWAGE - 5TH 64 R MI 100.9-PERCH LAKE BACKWATER	River	2t
093013	CHIPPEWA RIVER - E BANK BEL PPR CO ABOVE CR	Chippewa River	2t
093012	CHIPPEWA RIVER - CTH TT R MI 94.7	Chippewa River	2t

Water Quality Excursions

Criteria Exceedance	Exceedance Date	Comment
---------------------	-----------------	---------

Assessment Parameters

Parameter	Date	Comment	Station ID	Station Name
-----------	------	---------	------------	--------------

303D Categories

Impaired Water ID	Date Listed	Impairment	Pollutant Category	Impaired Water Status	Impaired Water Priority	Docume Exist?	
80	04/01/1998	Contaminated Fish Tissue	Mercury	Contam. Sediment	Proposed Change to Listing	Low Priority	Yes
80	04/01/1998	Contaminated Fish Tissue	Mercury	Atm. Deposition	Proposed Delist	Low Priority	Yes

[Back](#) | [Uses](#) | [AIS/Habitat](#) | [Monitoring and Listing](#) | [Enable Edit](#) | [Download](#)

Filename: ChippewaRiver_proposed_listingupdates_12_08.doc
Directory: Z:\303(d)\List\CENTRAL_OFFICE_DOCSHEETS
Template: C:\Documents and Settings\helmul\Application
Data\Microsoft\Templates\Normal.dot
Title: 2008 Impaired Waters Documentation Sheet
Subject:
Author: betzc
Keywords:
Comments:
Creation Date: 12/12/2007 10:28:00 AM
Change Number: 2
Last Saved On: 12/12/2007 10:28:00 AM
Last Saved By: Lisa Helmuth
Total Editing Time: 2 Minutes
Last Printed On: 12/12/2007 10:30:00 AM
As of Last Complete Printing
Number of Pages: 8
Number of Words: 1,115 (approx.)
Number of Characters: 6,282 (approx.)