

Resolution RPC No. 696

**AMENDING THE DANE COUNTY REGIONAL DEVELOPMENT GUIDE,
WATER QUALITY PLAN AND FARMLAND PRESERVATION PLAN BY
REVISING THE CROSS PLAINS URBAN SERVICE AREA BOUNDARY**

WHEREAS, the Dane County Regional Planning Commission has adopted urban service area boundaries and environmental corridor delineations for the Cross Plains Urban Service Area as elements of the Dane County Regional Development Guide, Water Quality and Farmland Preservation Plans; and

WHEREAS, the Village of Cross Plains has adopted a revised Master Plan for the Village. The Master Plan proposes revisions to the adopted Cross Plains Urban Service Area boundary and environmental corridors which are consistent with the criteria and policies of adopted regional plans; and

WHEREAS, the Village of Cross Plains proposes to revise the Urban Service Area boundary and environmental corridors by adding 14.3 acres of land in Area NE as indicated on the attached map. The adjustment would add 14.3 acres of developable land to the urban service area; and

WHEREAS, the staff of the Dane County Regional Planning Commission has prepared a Staff Analysis and Environmental Assessment, and a public hearing was held on the proposed amendment on February 24, 1994. As part of addressing water resource issues, the Staff Analysis recommends that Cross Plains complete an overall stormwater management plan for the Village, consistent with provisions of an earlier environmental corridor amendment.

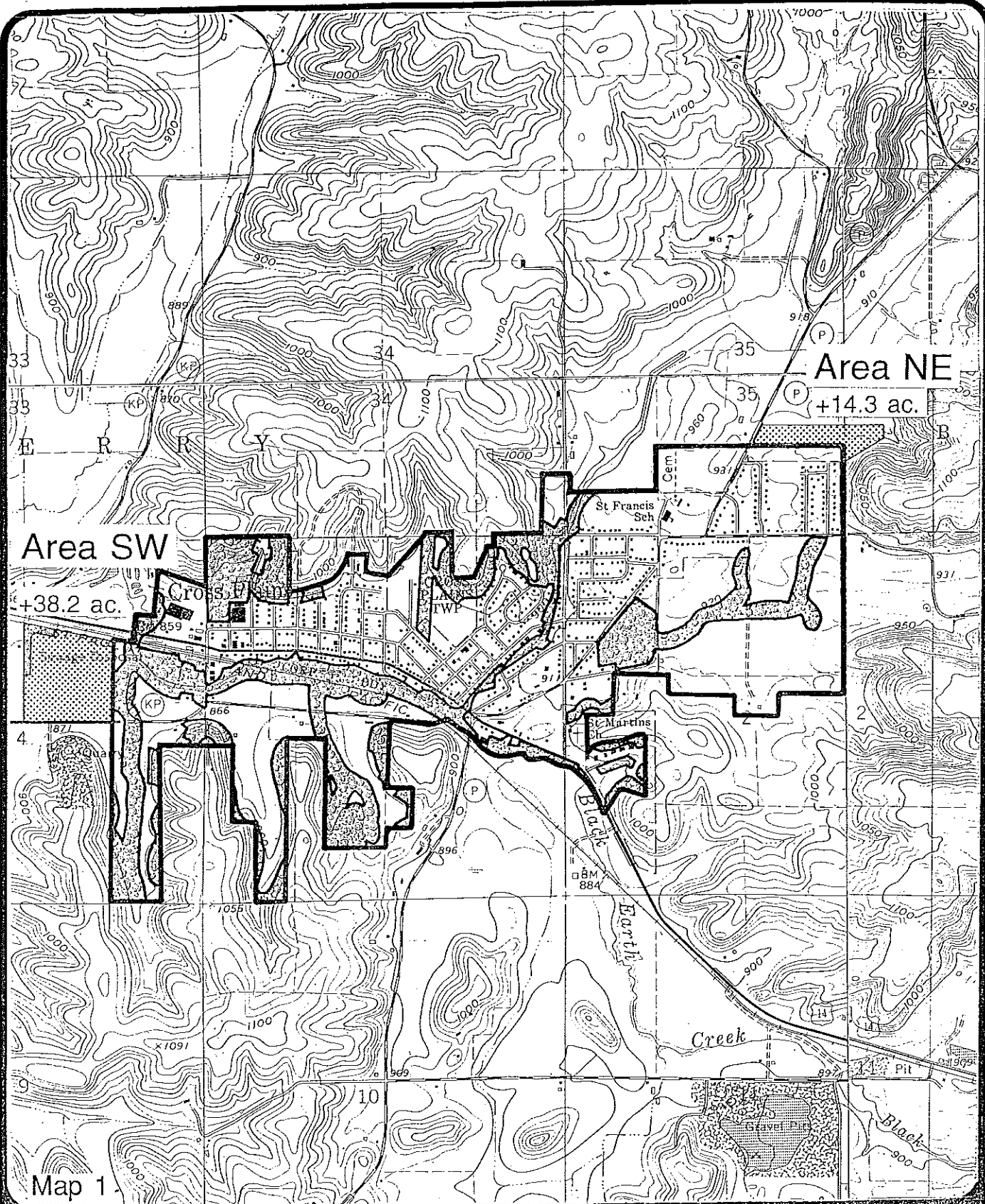
NOW, THEREFORE, BE IT RESOLVED that the Dane County Regional Development Guide, Water Quality Plan and Farmland Preservation Plan are hereby amended by revising the Cross Plains Urban Service Area boundary by adding Area NE as indicated on the attached map.

March 10, 1994

Date Adopted


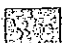
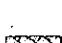
Helen J. Johnson

Helen J. Johnson, Secretary



Map 1

**CROSS PLAINS
URBAN SERVICE AREA**

-  Area to be added
-  Environmental Corridor
-  Environmental Corridor to be deleted



2/24/94

1" = 2000'