

ADDENDUM NO. 1

PROJECT: CTH M
CTH D - Laundromat Rd
Washburn County

Date: February 1, 2016

Section 20 of the Special Provision is deleted and replaced with the following:

20. Concrete Barrier Transition Type S42 to S56C, Item SPV.0090.01
Supplement standard specification 603 to include the following:

Bar steel reinforcement, determining the bar steel reinforcement quantities, and installing the bar steel reinforcement is incidental to this item. The bar steel quantities shall be accordance to Standard Detail Drawing SDD 14B 41-1a in the construction plan.

Section 20 of the Special Provision is deleted and replaced with the following:

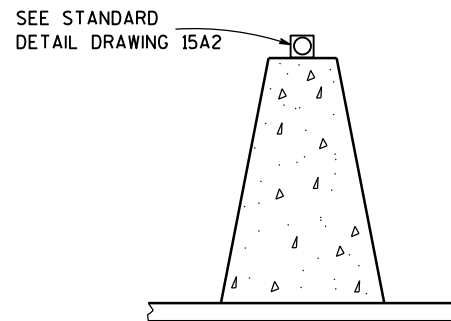
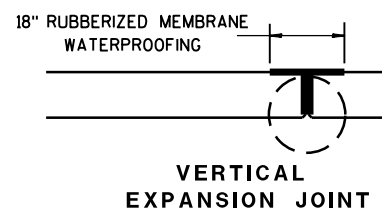
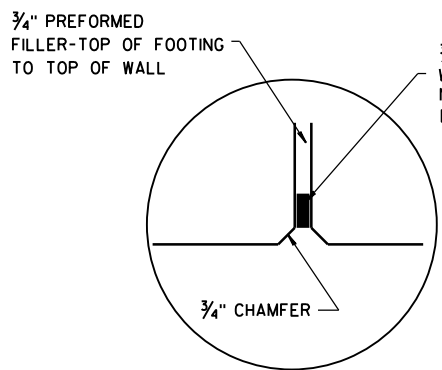
21. Concrete Barrier Type S56C, Item SPV.0090.02
Supplement standard specification 603 to include the following:

Bar steel reinforcement, determining the bar steel reinforcement quantities, and installing the bar steel reinforcement is incidental to this item. The bar steel quantities shall be accordance to Standard Detail Drawing SDD 14B 41-1a in the construction plan.

Schedule of Items is revised as follows:

SPV.0090.01 Concrete Barrier Transition Type S42 to S56, 50 LF is replaced with,
SPV.0090.01 Concrete Barrier Transition Type S42C to S56C, 50 LF

SPV.0090.02 Concrete Barrier Type S56, 525 LF is replaced with,
SPV.0090.02 Concrete Barrier Type S56C, 525 LF



SPACING FOR DELINEATORS ON HORIZONTAL CURVES

RADIUS OF CURVE	APPROXIMATE SPACING ON CURVE
50 FEET	20 FEET
115 FEET	25 FEET
180 FEET	35 FEET
250 FEET	40 FEET
300 FEET	50 FEET
400 FEET	55 FEET
500 FEET	65 FEET
600 FEET	70 FEET
700 FEET	75 FEET
800 FEET	80 FEET
900 FEET	85 FEET
1000 FEET	90 FEET

GENERAL NOTES

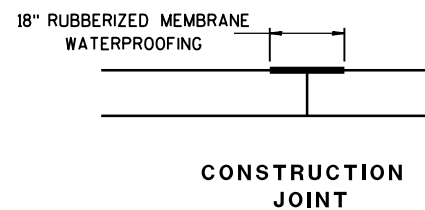
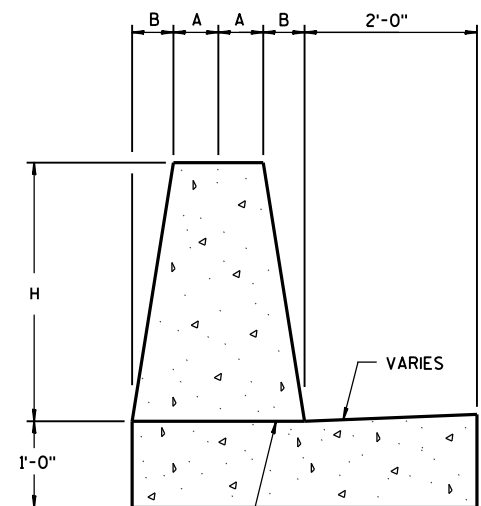
PROVIDE EXPANSION JOINTS WHERE EXISTING EXPANSION JOINTS OR AT THE END OF EACH POUR.

NO HORIZONTAL STEEL CROSSES EXPANSION JOINTS.

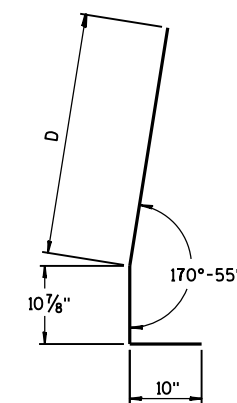
CONSTRUCT PER STANDARD SPECIFICATION 603. SPLICES OF LONGITUDINAL BARS TO BE 2' LONG AND FIRMLY TIED AND FASTENED TOGETHER UNLESS NOTED OTHERWISE. 4000 PSI CONCRETE AIR ENTRAINMENT PER STANDARD SPECIFICATIONS 501. USE 3/4" BEVEL OR 1" RADIUS ON ALL EXPOSED SHARP EDGES UNLESS NOTED OTHERWISE. 2" CLEAR COVER (TYP.)

REFLECTOR SPACING

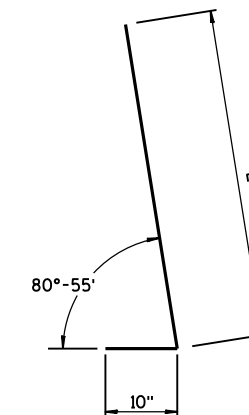
	LENGTH OF BARRIER	REFLECTOR SPACING	NO. SURFACES REFLECTORIZED	MIN. NO. REFLECTORS
ONE WAY TRAFFIC	< 200'	50' C-C	1	3
	> 200'	100' C-C	1	3
TWO WAY TRAFFIC	< 200'	25' C-C	1	6
	> 200'	50' C-C	1	6
TWO WAY TRAFFIC	< 200'	50' C-C	2	3
	> 200'	100' C-C	2	3



BARRIER HEIGHT H INCHES	A INCHES	B INCHES	NUMBER OF NO. 5 BARS EACH
36	6 1/4	5 3/4	8
42	5 1/4	6 3/4	10
56	3	9	11



V1 BAR BENDING DETAIL



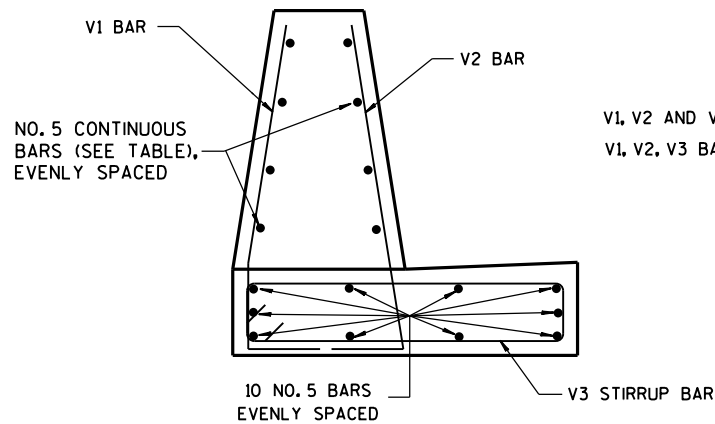
V2 BAR BENDING DETAIL

BAR CHART ROADSIDE RETAINING WALL

BARRIER HEIGHT	V1 BAR D	V2 BAR E	V4 BAR F
36"	2'-9 5/8"	3'-9 3/4"	2'-8"
42"	3'-3 5/8"	4'-2 5/8"	3'-2 1/8"
56"	4'-7 1/2"	5'-6 1/2"	4'-4 3/8"

OPTIONAL CONSTRUCTION JOINT, ROUGH FINISHED

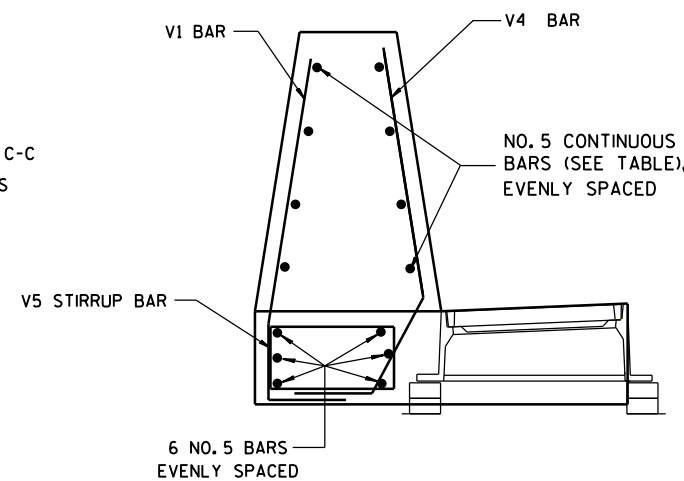
ROADSIDE RETAINING WALL



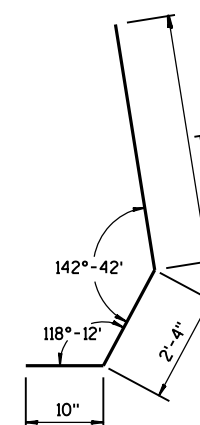
ROADSIDE RETAINING WALL NORMAL BAR PLACEMENT

V1, V2 AND V3 ARE SPACED 18" C-C

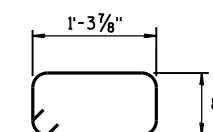
V1, V2, V3 BARS ARE NO. 5 BARS



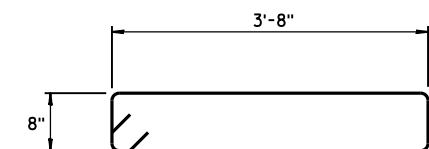
ROADSIDE RETAINING WALL BAR PLACEMENT NEAR INLET



V4 BAR BENDING DETAIL



V5 STIRRUP BAR BENDING DETAIL



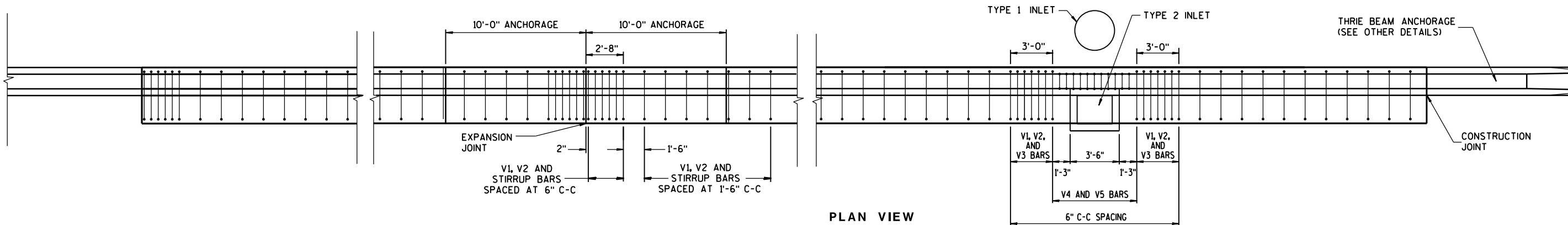
V3 STIRRUP BAR BENDING DETAIL

SINGLE SLOPE ROADSIDE RETAINING WALL

STATE OF WISCONSIN DEPARTMENT OF TRANSPORTATION

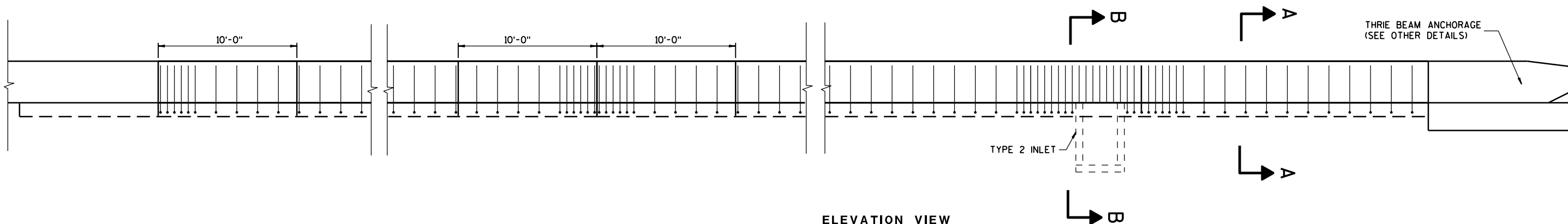
6

6



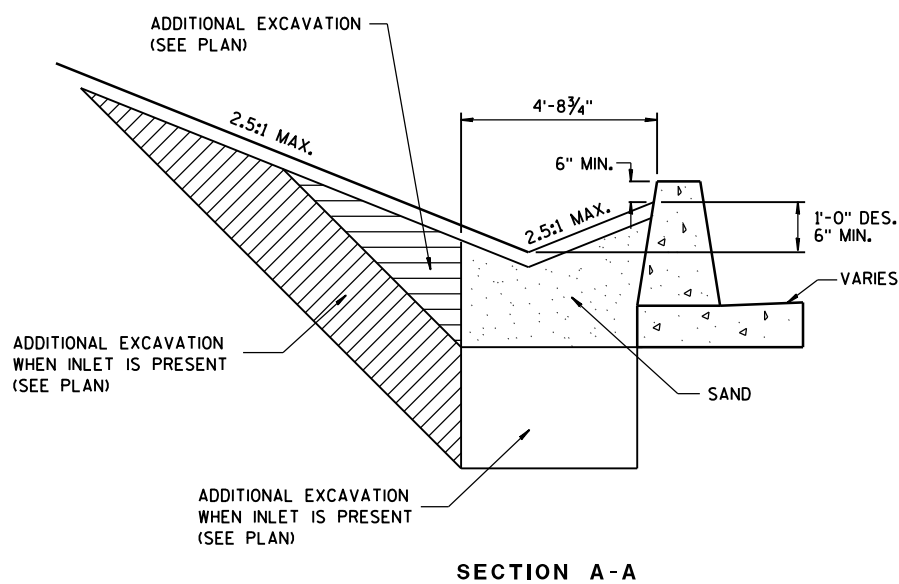
PLAN VIEW

NOTE: HORIZONTAL BARS ARE NOT SHOWN
SEE OTHER DETAILS FOR HORIZONTAL BARS.

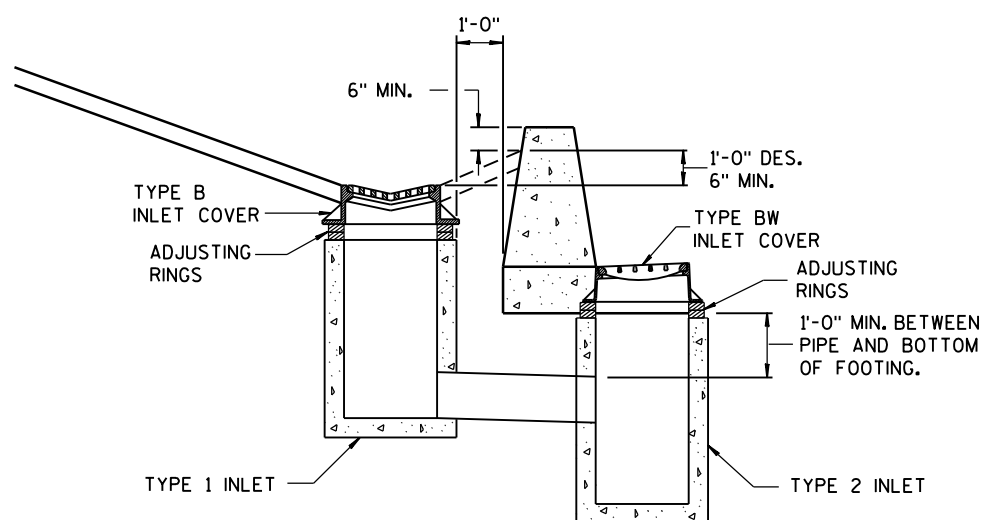


ELEVATION VIEW

NOTE: HORIZONTAL BARS ARE NOT SHOWN
SEE OTHER DETAILS FOR HORIZONTAL BARS.

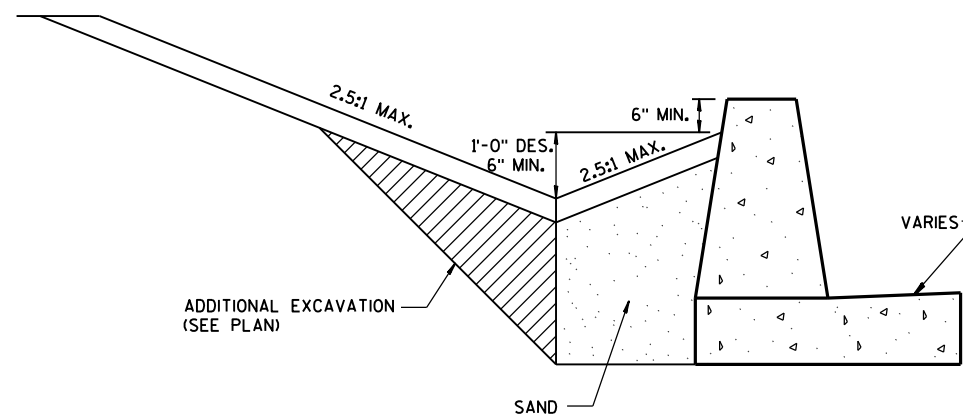


SECTION A-A



SECTION B-B

MINIMUM DESIGN OF EARTH WORK FOR INLET



MINIMUM DESIGN OF EARTH WORK

SINGLE SLOPE
ROADSIDE RETAINING WALL

STATE OF WISCONSIN
DEPARTMENT OF TRANSPORTATION

APPROVED	/s/ Jerry H. Zogg
6/13/2011	DATE
	ROADWAY STANDARDS DEVELOPMENT ENGINEER
FHWA	