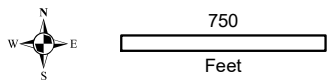
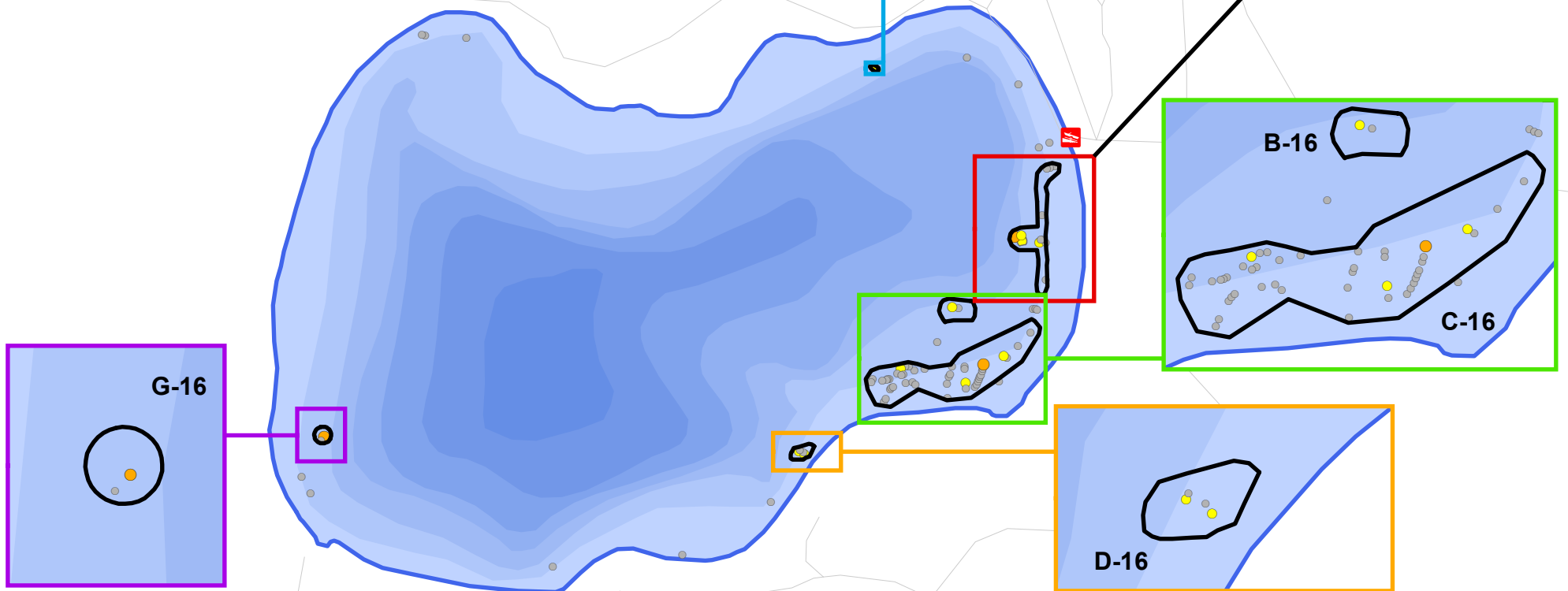


2016 EWM Control Strategy

Professional Hand Removal

Site	Acres	Average Depth & Range (ft)	Notes	Priority Level
A-16	0.96	5.0 (4-6)	Soft sediments, many native plants	1
B-16	0.34	7.5 (6-9)	Soft sediments, no obstructions	3
C-16	3.10	4.0 (2-6)	Soft sediments, many native plants, some tree limbs in near-shore areas	2
D-16	0.13	5.0 (4-6)	Soft/sandy sediments, moderate native plant growth	3
E-16	0.02	4.0 (3-5)	Harder substrate	3
G-16	0.11	3.0 (2-4)	Soft substrate, floating-leaf vegetation common. Loon platform nearby.	2
Total	4.66			



Onterra LLC
Lake Management Planning
815 Prosper Road
De Pere, WI 54115
920.338.8860
www.onterra-eco.com

Sources:
Roads and Hydro: WDNR
Bathymetry: WDNR, digitized by Onterra
Aquatic Plant Survey: Onterra, 2016
Map Date: June 21, 2016
Filename: LoneStone_EWM_June16.mxd



Legend

- | | |
|----------------------------------------|--------------------------------------|
| Highly Scattered (<i>none found</i>) | Single or Few Plants |
| Scattered (<i>none found</i>) | Clump of Plants |
| Dominant | Small Plant Colony |
| Highly Dominant (<i>none found</i>) | |
| Surface Matting (<i>none found</i>) | |
| | Professional Hand-Removal Focus Area |

Lone Stone Lake
Oneida County, Wisconsin

Survey Results & Hand-Removal Strategy