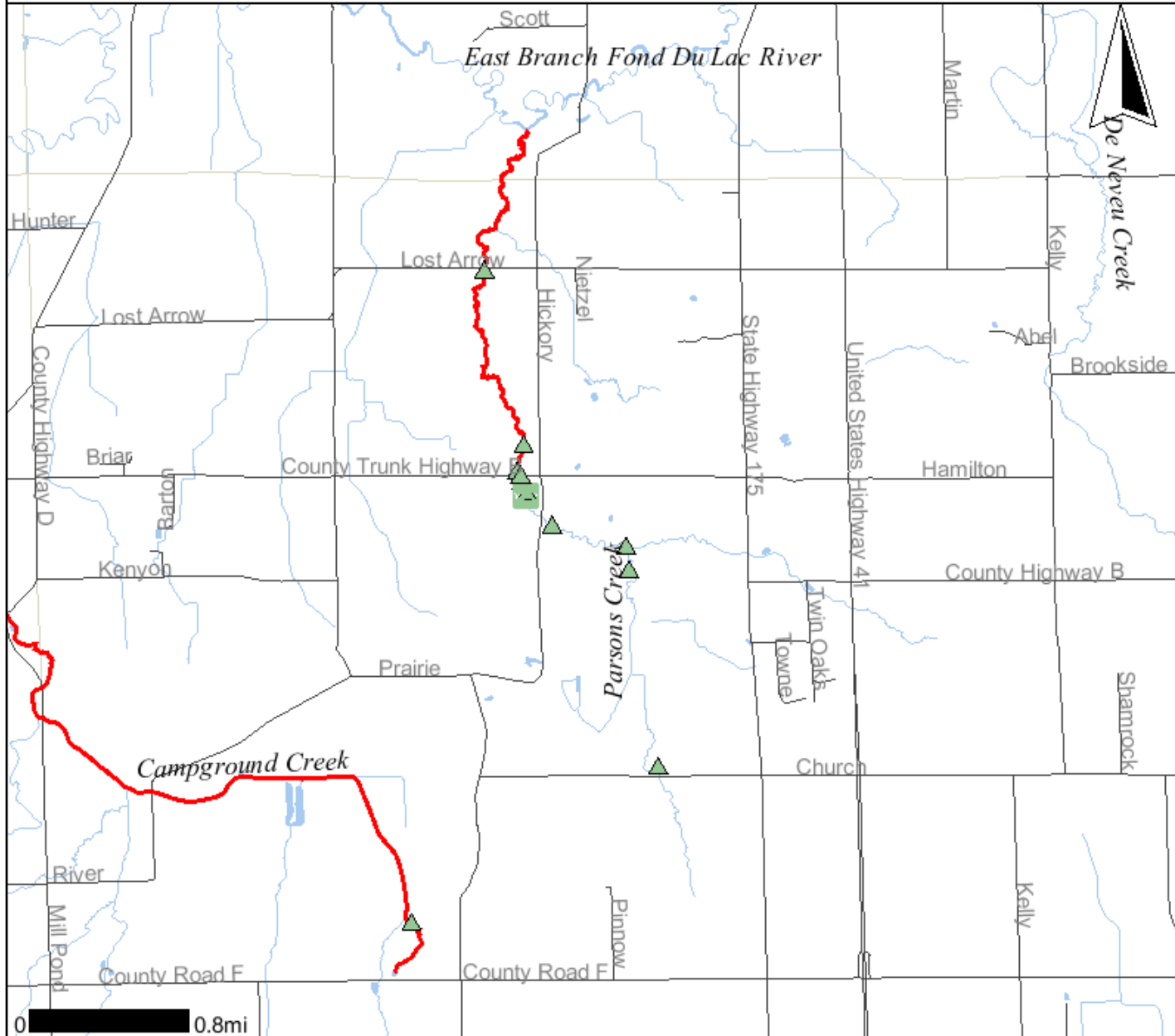


Parsons Creek (303d) Site with Stations

Legend



- Monitoring Station Points**
 - ▲ Active
 - ◻ FHDB Pending
 - Inactive Pending
 - ◻ Inactive Obsolete
 - ★ New Pending
- Monitoring Station Lines**
 - Active
 - - - Inactive Obsolete
 - · · New Pending
 - · · Not defined
- Monitoring Station Areas**
 - Active
 - ▨ Inactive Obsolete
 - ▨ New Pending
 - ▨ Not defined
- Impaired Waters Lines**
 - 303d Flagged AU
- Impaired Waters Areas**
 - 303d Flagged AU
- 24K County Boundaries**
 -
- Local Roads**
 -
- Civil Towns**
 -
- 24K Open Water**
 -
- 24K Rivers and Shorelines**
 -
- Cities and Villages**
 - Village
 - City

Scale: 1:50,038

DO NOT USE FOR NAVIGATION