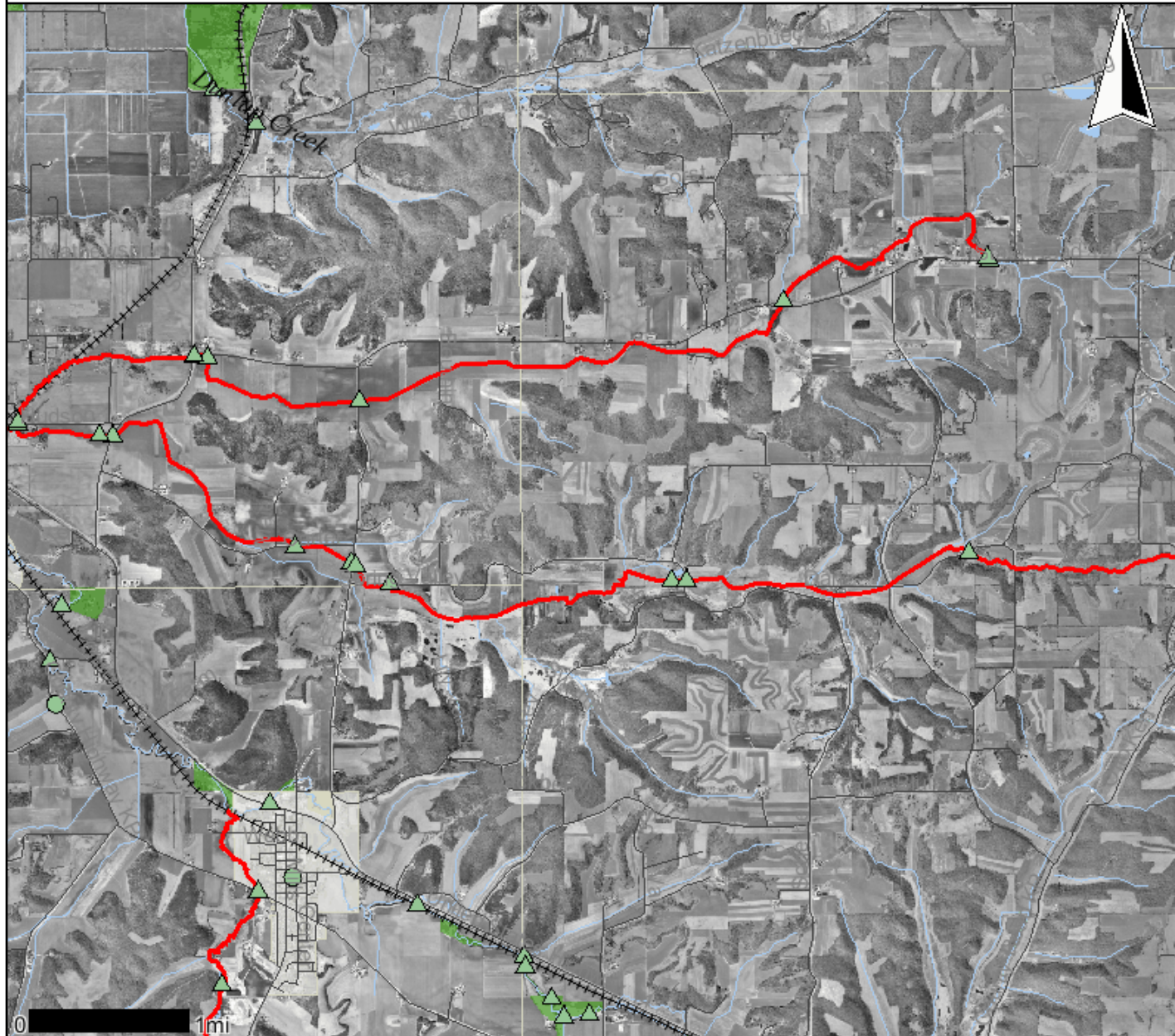


# Wendt Creek 303d Site

# Legend



- Monitoring Station Points**
  - ▲ Active
  - FHDB Pending
  - Inactive Pending
  - Inactive Obsolete
  - ★ New Pending
- Monitoring Station Lines**
  - Active
  - Inactive Obsolete
  - New Pending
  - Not defined
- Monitoring Station Areas**
  - Active
  - Inactive Obsolete
  - New Pending
  - Not defined
- Impaired Waters Lines**
  - 303d Flagged AU
- Impaired Waters Areas**
  - 303d Flagged AU
- Impaired Waters Category Lines**
  - Contaminated Sediment Dominated
  - Atmospheric Deposition Dominated
  - Physical or Habitat Dominated
  - Nonpoint Source Dominated
  - Point and Nonpoint Source Blend
  - Other or Multiple Factors
- Impaired Waters Category Areas**
  - Contaminated Sediment Dominated
  - Atmospheric Deposition Dominated
  - Physical or Habitat Dominated
  - Nonpoint Source Dominated
  - Point and Nonpoint Source Blend
  - Other or Multiple Factors
- 24K County Boundaries**
  -
- Railroads**
  -
- Local Roads**
  -
- Civil Towns**
  -
- Civil Town**
  -
- 24K Open Water**
  -
- 24K Rivers and Shorelines**
  -
- Cities and Villages**
  -
- Village**
  -
- City**
  -
- DNR Managed Lands**
  - Fee
  - National Forest Boundaries

Scale: 1:61,400

DO NOT USE FOR NAVIGATION