

FINAL
Invasive Species

2014 Monitoring Report
(Per License Article 405)

For the

Middle Appleton Dam Hydroelectric Project
FERC P-7264 NATDAM ID WI00166

Lower Fox River
Outagamie County, Wisconsin



Submitted by:

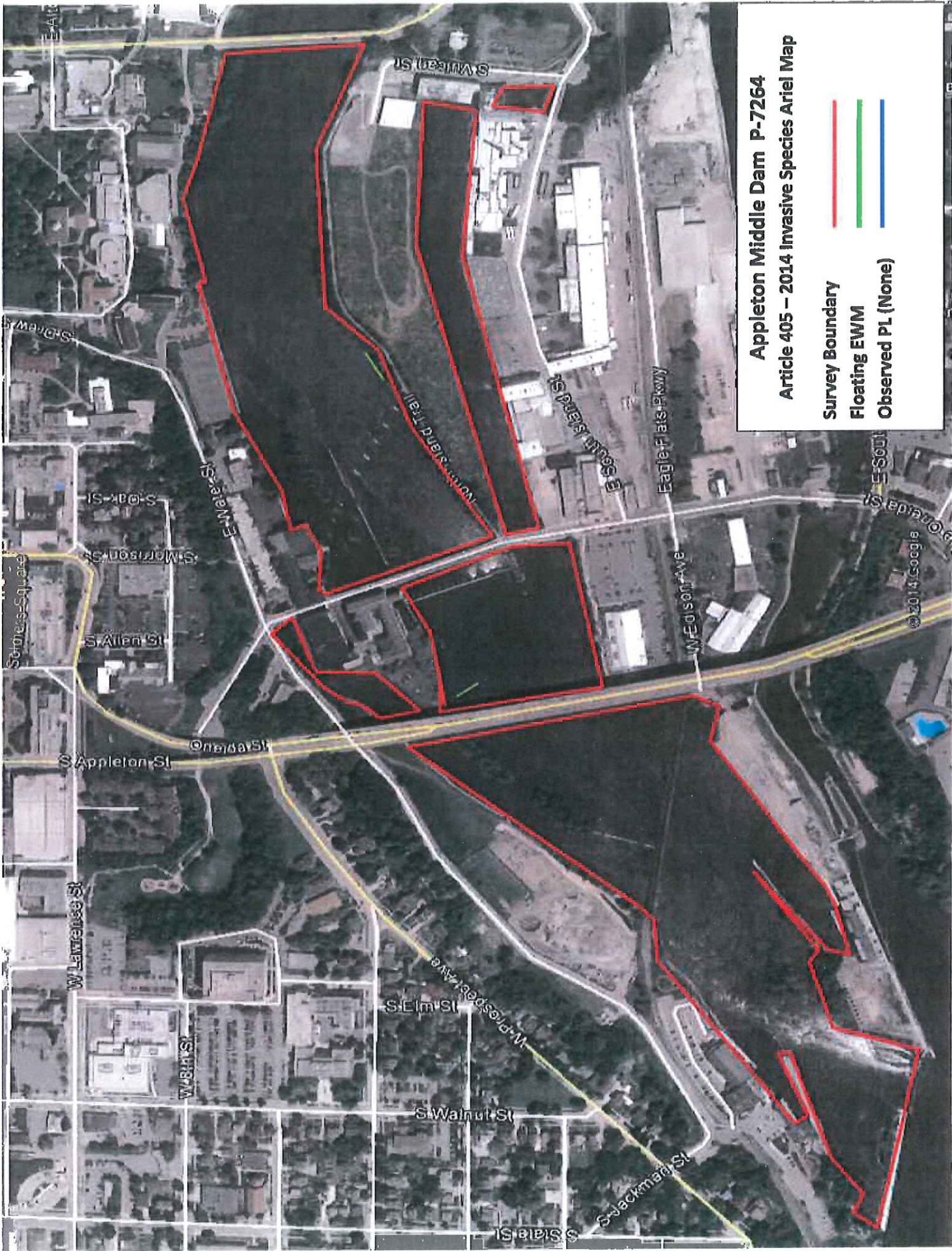
Eagle Creek Renewable Energy
116 North State Street - P.O. Box 167
Neshkoro, WI 54960-0167

November 2014

Report Prepared
For
Neenah Paper, Inc. and NEW Hydro, LLC

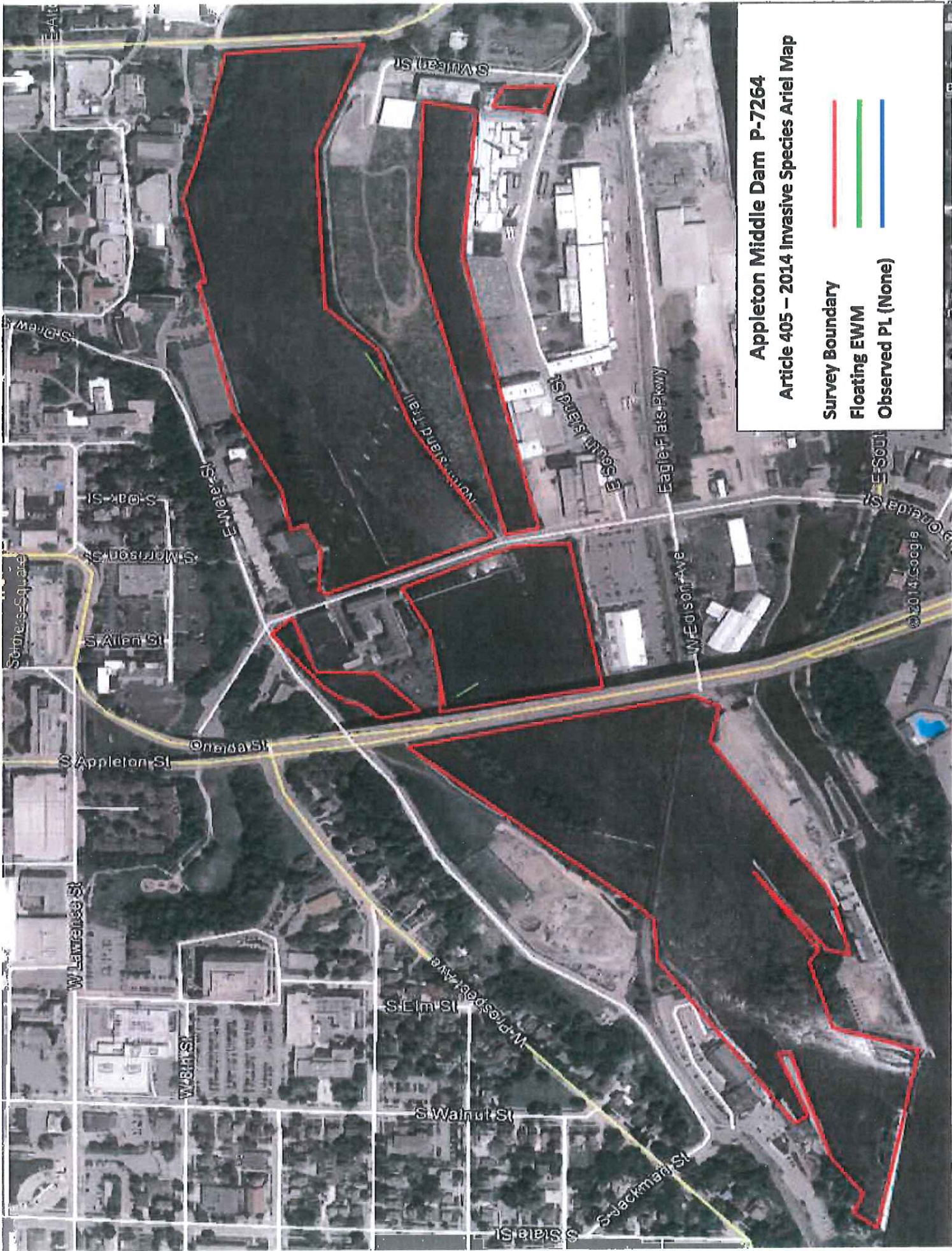
FIGURE 1

SURVEY BOUNDARY MAP



Appleton Middle Dam P-7264
Article 405 - 2014 Invasive Species Aerial Map

- Survey Boundary
- Floating EWM
- Observed PL (None)



Appleton Middle Dam P-7264
Article 405 - 2014 Invasive Species Aerial Map

- Survey Boundary
- Floating EWM
- Observed PL (None)