



Wisconsin Public Service Corporation
(a subsidiary of WPS Resources Corporation)
700 North Adams Street
P.O. Box 19001
Green Bay, WI 54307-9001

January 4, 2011

FERC Project No. 2595

Ms. Kimberly D. Bose, Secretary
The Federal Energy Regulatory Commission
888 First Street NE
Washington, DC 20426

Dear Secretary Bose:

2010 Water Quality Monitoring Results for the High Falls Hydroelectric Project

Pursuant to the Water Quality Monitoring Plan for the High Falls Hydroelectric Project, Wisconsin Public Service Corporation (WPS) is pleased to submit water quality monitoring data from the 2010 monitoring season. Per the Water Quality Monitoring Plan for the Project, dissolved oxygen (D.O.), temperature, and pH was monitored in the tailrace of the High Falls Hydroelectric facility at the Boat Landing No. 3 Bridge over the Peshtigo River during the months of June through September. Water quality monitoring data are attached in Appendix A. The water quality standards downstream of the High Falls Hydroelectric Facility are as follows:

Dissolved Oxygen Concentration: 5.0 mg/l
Maximum Monthly Average Temperature: 89°F
pH: >6.0 standard units, < 9.0 standards units

Water quality monitoring was conducted using Hydrolab Datasonde[®] monitoring equipment. Per the manufacturer, the monitoring equipment has a D.O. accuracy of +/- 0.2 mg/l. All monitoring data collected was adjusted for a loss of calibration if a post deployment calibration of the equipment showed calibration drift of 0.2 mg/l or greater. For compliance purposes, any dissolved oxygen readings below 4.80 mg/l is an exceedance of the Project License limit.

The only potential water quality deviation to note occurred on July 15th while the facility was conducting re-regulation. Pursuant to Article 402 of the FERC license for the High Falls Hydroelectric project, the High Falls project will maintain re-regulation operation from approximately July 1 to April 14 to coincide with the end of run-of-river operation, so that at any point in time, instantaneous outflow, as measured immediately downstream of the tailrace, approximates the mean daily inflow to the Caldron Falls impoundment. Mean daily inflow to the Caldron Falls project for purposes of reregulation will be the daily average outflows from the Caldron Falls Project from the previous day. The mean daily inflows will be adjusted once daily by

Ms. Kimberly Bose, Secretary
January 4, 2011
Page 2 of 2

an algorithm that includes a re-regulation factor and if necessary a head centering adjustment to assure a return to a constant target elevation (mid-point) and to provide the required re-regulation outflows from the High Falls project.

Between 03:00 and 04:00 on July 15th, the facility increased the volume of water released from the High Falls Reservoir from 230 cfs to approximately 560 cfs in order to approximate the previous day's outflows from Caldron Falls as part of the re-regulation process. During the course of increasing outflows, D.O. levels dropped below the License minimum concentration of 5.0 mg/l to approximately 4.3 mg/l at 04:00. The increase in flow rate may have influenced the D.O. reading. At the time the low D.O. readings were observed, approximately 60 cfs of aeration flow was being released through the tainter gate. Operators were dispatched upon observation of the low DO readings and aeration flow was increased to approximately 100 cfs. Dissolved oxygen levels returned to levels above the water quality standard by 04:30.

There are no other potential deviations from the D.O., temperature or pH standards to report. WPS consulted with the Wisconsin Department of Natural Resources and U.S. Fish and Wildlife Service (FWS) regarding the water quality monitoring data. No comments were received from either agency on the water quality monitoring data. Documentation of agency consultation is attached in Appendix B. Should you have any questions or concerns, please do not hesitate to call Mr. Mark Metcalf at (920) 433-1833.

Thank you for your time and consideration.

Sincerely,



Terry P. Jensky
Vice President – Energy Supply Operations
Telephone: (920) 433-2900

cc:	Mr. Shawn Puzen, IBS - D2	Mr. Robert Juidici, WPSC - D2
	Mr. Bruce Crocker, WPS - D2	Ms. Joan Johaneck, WPSC - D2
	Mr. Ed Brandt, WPS - WM	Ms. Patricia Grant, FERC - Chicago
	Mr. William Bosacki, WPS - CRI	Mr. Michael Donofrio - WDNR (cover only)
	Mr. Gil Snyder, WPSC - D2	Mr. Nick Utrup - FWS (cover only)

High Falls Hydroelectric Project

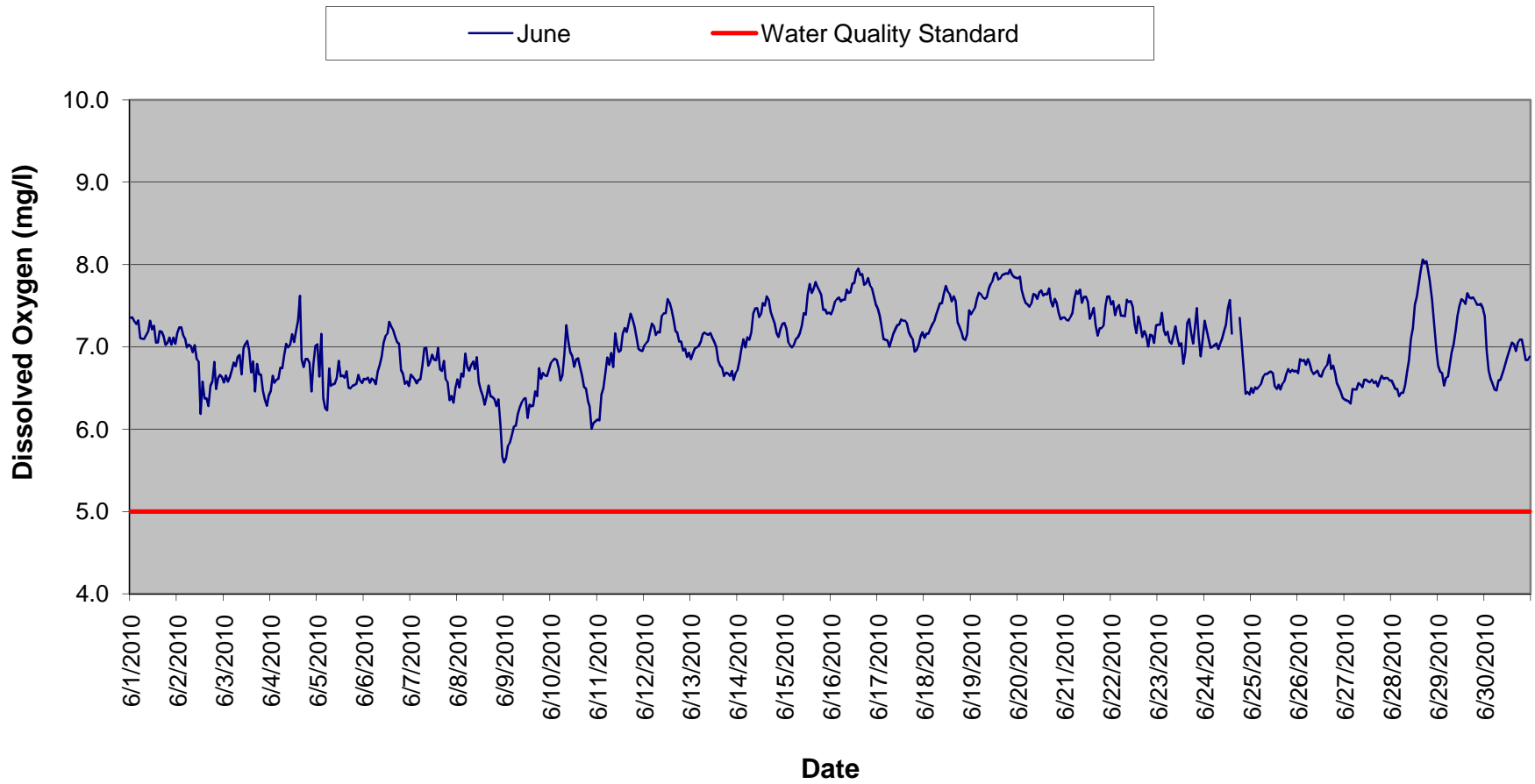
FERC No. 2858

2010 Water Quality Monitoring Report

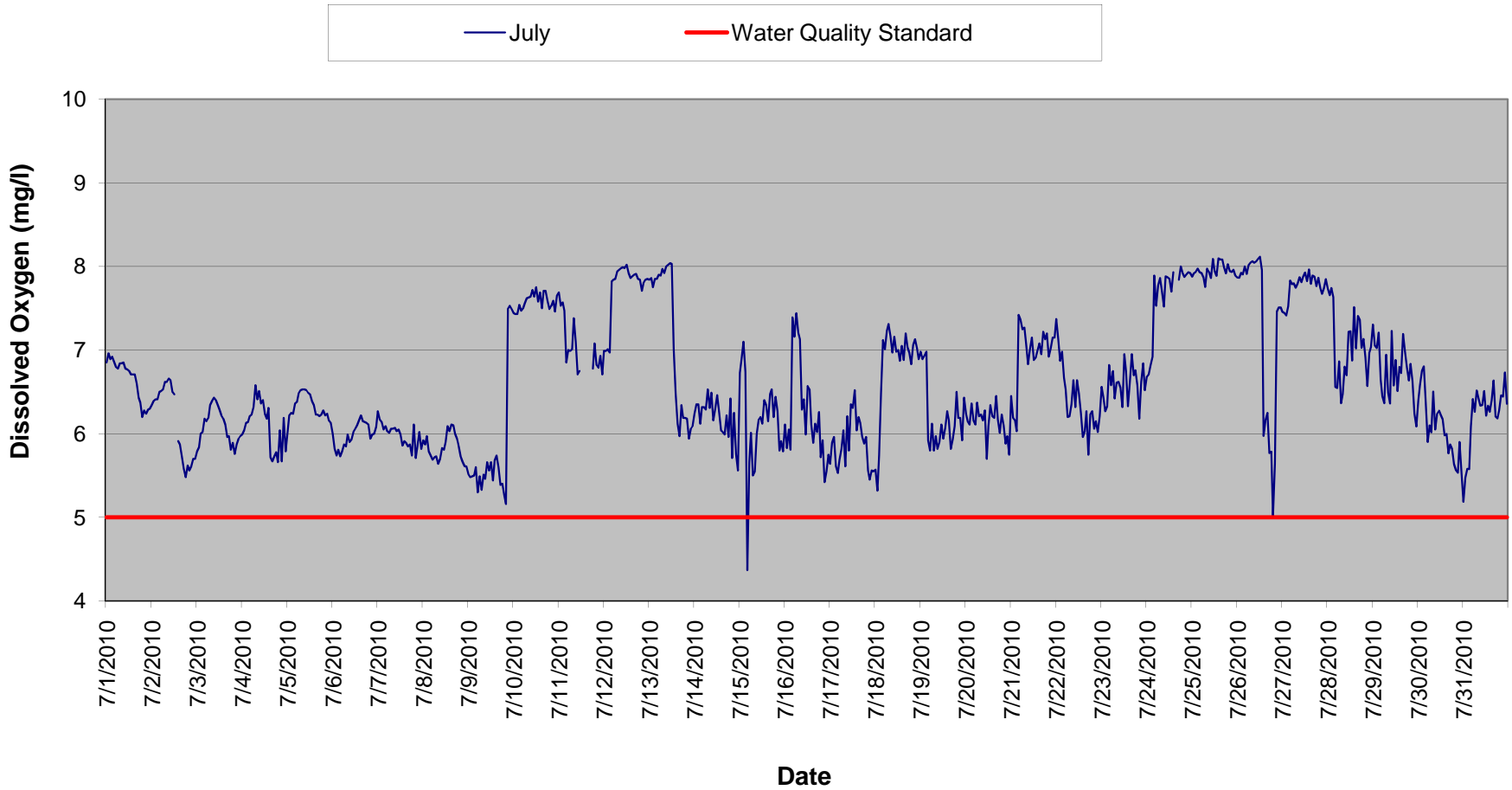
Appendix A

Water Quality Monitoring Data

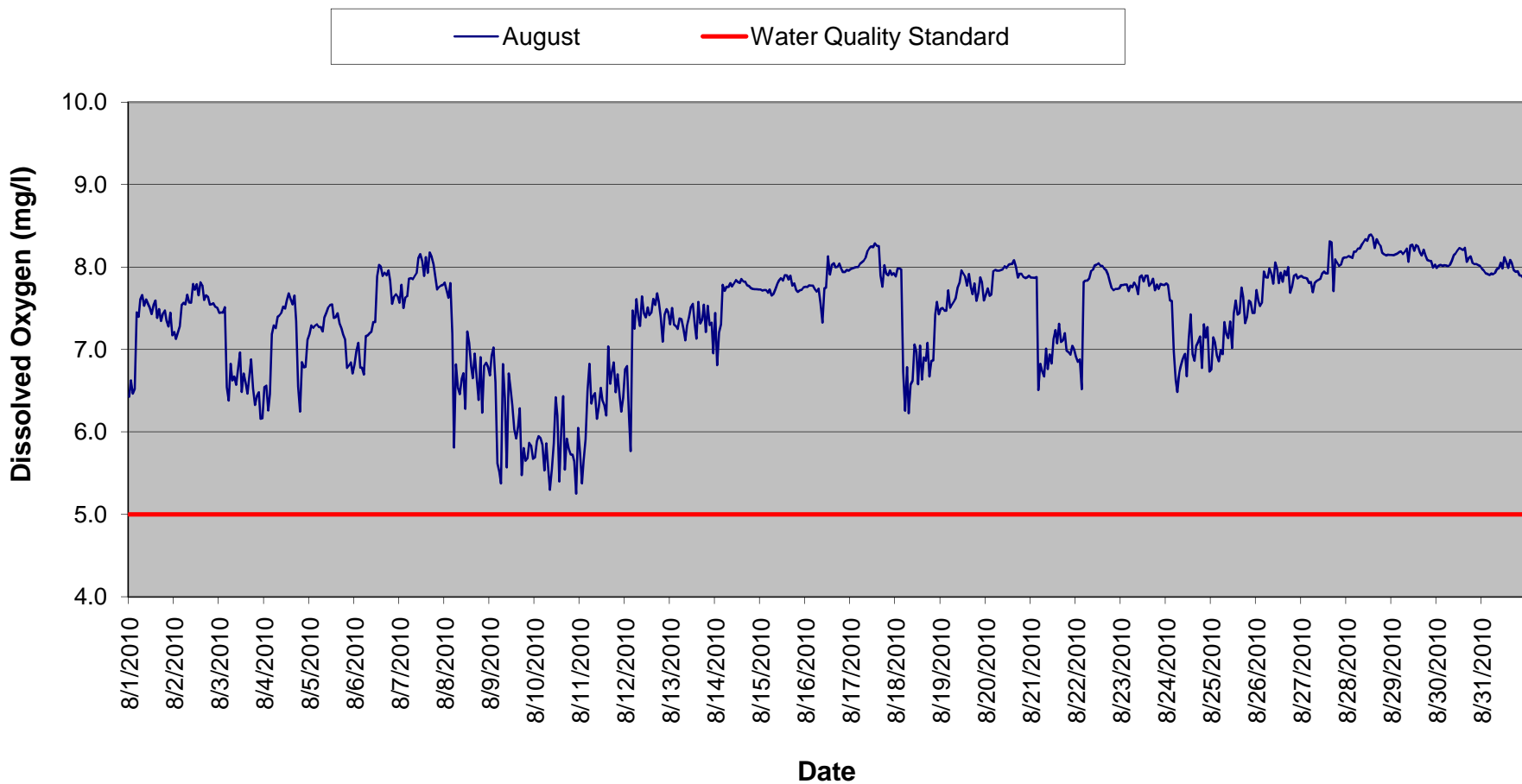
High Falls Dissolved Oxygen Monitoring - June 2010



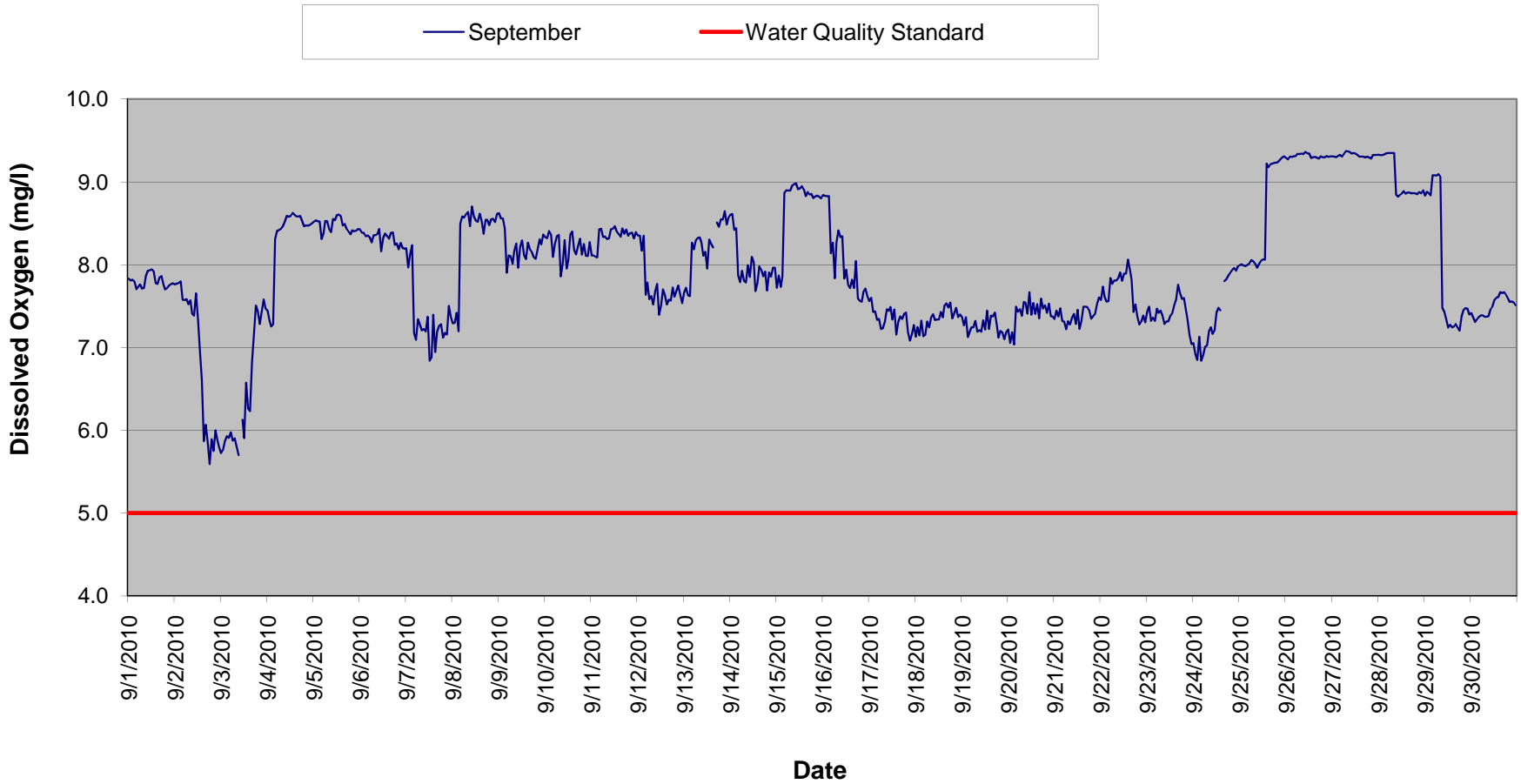
High Falls Dissolved Oxygen Monitoring - July 2010



High Falls Dissolved Oxygen Monitoring - August 2010



High Falls Dissolved Oxygen Monitoring - September 2010



High Falls Dissolved Oxygen Summary - June 2010

Time HHMMSS	06/01/10	06/02/10	06/03/10	06/04/10	06/05/10	06/06/10	06/07/10	06/08/10	06/09/10	06/10/10	06/11/10	06/12/10	06/13/10	06/14/10	06/15/10	06/16/10
0	7.4	7.2	6.6	6.5	7.0	6.6	6.7	6.6	5.6	6.8	6.1	7.0	6.8	6.7	7.3	7.4
10000	7.4	7.2	6.7	6.6	6.6	6.6	6.6	6.5	5.6	6.8	6.1	7.0	6.9	6.8	7.2	7.5
20000	7.3	7.2	6.6	6.6	7.2	6.6	6.6	6.7	5.8	6.9	6.4	7.1	7.0	7.0	7.1	7.5
30000	7.3	7.1	6.6	6.6	6.4	6.6	6.6	6.6	5.8	6.8	6.5	7.2	7.0	7.1	7.0	7.6
40000	7.3	7.1	6.7	6.6	6.3	6.6	6.6	6.9	5.9	6.7	6.7	7.3	7.0	7.0	7.0	7.6
50000	7.1	7.0	6.8	6.7	6.2	6.6	6.6	6.8	6.0	6.6	6.9	7.3	7.1	7.1	7.0	7.6
60000	7.1	7.0	6.8	6.7	6.7	6.5	6.8	6.7	6.0	6.7	6.8	7.1	7.2	7.1	7.1	7.6
70000	7.1	7.0	6.9	6.9	6.5	6.7	7.0	6.8	6.2	6.9	6.9	7.2	7.2	7.2	7.1	7.6
80000	7.1	6.9	6.9	7.0	6.5	6.8	7.0	6.8	6.3	7.3	6.8	7.2	7.2	7.4	7.2	7.7
90000	7.2	7.0	6.7	7.0	6.6	6.9	6.8	6.7	6.3	7.1	7.2	7.4	7.1	7.5	7.3	7.7
100000	7.3	6.9	7.0	7.0	6.6	7.1	6.8	6.9	6.4	6.9	7.0	7.4	7.2	7.5	7.4	7.7
110000	7.2	6.8	7.0	7.2	6.8	7.1	6.9	6.6	6.4	6.9	6.9	7.4	7.1	7.4	7.4	7.8
120000	7.3	6.2	7.1	7.1	6.6	7.2	6.8	6.5	6.1	6.8	7.0	7.6	7.1	7.4	7.6	7.8
130000	7.1	6.6	7.0	7.2	6.7	7.3	6.8	6.4	6.3	6.8	7.2	7.5	7.0	7.5	7.8	7.9
140000	7.1	6.4	6.7	7.3	6.6	7.2	7.0	6.3	6.3	6.9	7.2	7.5	6.8	7.5	7.7	8.0
150000	7.2	6.4	6.8	7.6	6.7	7.2	6.7	6.4	6.3	6.7	7.2	7.3	6.8	7.6	7.7	7.9
160000	7.2	6.3	6.5	6.8	6.5	7.1	6.7	6.5	6.5	6.7	7.3	7.2	6.7	7.6	7.8	7.9
170000	7.1	6.5	6.8	6.8	6.5	7.1	6.8	6.4	6.4	6.5	7.4	7.2	6.6	7.4	7.7	7.8
180000	7.0	6.6	6.7	6.9	6.5	7.0	6.6	6.4	6.7	6.5	7.3	7.1	6.7	7.4	7.7	7.8
190000	7.0	6.8	6.7	6.9	6.5	6.7	6.6	6.4	6.6	6.3	7.2	7.1	6.7	7.3	7.6	7.8
200000	7.1	6.5	6.5	6.8	6.5	6.7	6.4	6.3	6.7	6.3	7.1	7.0	6.6	7.2	7.5	7.7
210000	7.0	6.6	6.4	6.5	6.7	6.6	6.4	6.4	6.7	6.0	7.0	7.0	6.7	7.1	7.5	7.7
220000	7.1	6.7	6.3	6.8	6.6	6.6	6.3	6.1	6.6	6.1	7.0	6.9	6.6	7.2	7.4	7.6
230000	7.0	6.6	6.4	7.0	6.6	6.5	6.5	5.7	6.7	6.1	6.9	6.9	6.7	7.3	7.4	7.5
Daily Max	7.4	7.2	7.1	7.6	7.2	7.3	7.0	6.9	6.7	7.3	7.4	7.6	7.2	7.6	7.8	8.0
Daily Min	7.0	6.2	6.3	6.5	6.2	6.5	6.3	5.7	5.6	6.0	6.1	6.9	6.6	6.7	7.0	7.4
Average	7.2	6.8	6.7	6.9	6.6	6.8	6.7	6.5	6.3	6.7	6.9	7.2	6.9	7.3	7.4	7.7

 Equipment malfunction

Water Quality Standard: 5.0 mg/l

High Falls Dissolved Oxygen Summary - June 2010

Time HHMMSS	06/17/10	06/18/10	06/19/10	06/20/10	06/21/10	06/22/10	06/23/10	06/24/10	06/25/10	06/26/10	06/27/10	06/28/10	06/29/10	06/30/10
0	7.5	7.1	7.4	7.8	7.4	7.5	7.3	7.3	6.5	6.7	6.4	6.6	6.8	7.4
10000	7.4	7.2	7.4	7.9	7.3	7.6	7.3	7.2	6.4	6.9	6.4	6.5	6.7	7.0
20000	7.3	7.2	7.5	7.7	7.3	7.4	7.4	7.1	6.5	6.8	6.3	6.5	6.7	6.7
30000	7.1	7.2	7.6	7.6	7.4	7.5	7.2	7.0	6.5	6.8	6.3	6.5	6.5	6.6
40000	7.1	7.3	7.7	7.5	7.4	7.5	7.1	7.0	6.5	6.8	6.5	6.4	6.6	6.6
50000	7.1	7.3	7.6	7.5	7.6	7.4	7.2	7.0	6.6	6.9	6.5	6.4	6.6	6.5
60000	7.0	7.4	7.6	7.5	7.7	7.4	7.1	7.0	6.6	6.8	6.5	6.4	6.8	6.5
70000	7.1	7.5	7.6	7.5	7.6	7.4	7.0	7.0	6.7	6.7	6.6	6.5	6.9	6.6
80000	7.2	7.5	7.6	7.6	7.7	7.6	7.1	7.0	6.7	6.7	6.5	6.7	7.0	6.6
90000	7.2	7.5	7.7	7.6	7.5	7.5	7.2	7.1	6.7	6.7	6.5	6.8	7.2	6.7
100000	7.3	7.6	7.8	7.6	7.6	7.6	7.1	7.2	6.7	6.7	6.6	7.1	7.4	6.8
110000	7.3	7.7	7.8	7.7	7.6	7.5	7.0	7.3	6.7	6.7	6.6	7.2	7.5	6.8
120000	7.3	7.7	7.9	7.7	7.6	7.3	7.0	7.5	6.5	6.6	6.6	7.5	7.6	6.9
130000	7.3	7.6	7.9	7.6	7.3	7.2	6.8	7.6	6.5	6.7	6.6	7.6	7.6	7.0
140000	7.3	7.6	7.8	7.6	7.4	7.4	6.9	7.2	6.5	6.8	6.6	7.8	7.5	7.1
150000	7.3	7.6	7.8	7.6	7.5	7.3	7.3		6.5	6.8	6.6	7.9	7.7	7.0
160000	7.2	7.6	7.9	7.7	7.3	7.1	7.3	7.1	6.6	6.9	6.6	8.1	7.6	7.0
170000	7.1	7.3	7.9	7.6	7.1	7.2	7.2		6.6	6.7	6.5	8.0	7.6	7.1
180000	7.1	7.2	7.9	7.5	7.2	7.1	7.0	7.4	6.7	6.8	6.6	8.0	7.6	7.1
190000	6.9	7.2	7.9	7.6	7.2	7.0	7.2	7.1	6.7	6.7	6.7	7.9	7.6	7.1
200000	7.0	7.1	7.9	7.5	7.3	7.1	7.5	6.7	6.7	6.6	6.6	7.8	7.5	7.0
210000	7.0	7.1	7.9	7.4	7.5	7.1	7.1	6.4	6.7	6.5	6.6	7.5	7.5	6.8
220000	7.1	7.2	7.8	7.3	7.6	7.0	6.9	6.5	6.7	6.5	6.6	7.3	7.5	6.8
230000	7.2	7.4	7.8	7.4	7.6	7.3	7.1	6.4	6.7	6.4	6.6	7.0	7.5	6.9
Daily Max	7.5	7.7	7.9	7.9	7.7	7.6	7.5	7.6	6.7	6.9	6.7	8.1	7.7	7.4
Daily Min	6.9	7.1	7.4	7.3	7.1	7.0	6.8	6.4	6.4	6.4	6.3	6.4	6.5	6.5
Average	7.2	7.4	7.7	7.6	7.4	7.3	7.1	7.0	6.6	6.7	6.5	7.2	7.2	6.8

High Falls Dissolved Oxygen Summary - July 2010

Time HHMMSS	07/01/10	07/02/10	07/03/10	07/04/10	07/05/10	07/06/10	07/07/10	07/08/10	07/09/10	07/10/10	07/11/10	07/12/10	07/13/10	07/14/10	07/15/10	07/16/10
0	6.9	6.3	5.8	6.0	6.0	6.0	6.3	5.9	5.5	7.4	7.7	7.0	7.8	6.2	6.7	6.1
10000	7.0	6.4	5.8	6.0	6.2	5.8	6.2	5.9	5.5	7.4	7.5	7.0	7.9	6.4	6.9	5.8
20000	6.9	6.4	6.0	6.1	6.3	5.7	6.1	6.0	5.5	7.4	7.6	7.0	7.8	6.4	7.1	6.1
30000	6.9	6.4	6.0	6.1	6.2	5.8	6.1	5.8	5.5	7.5	7.5	7.0	7.9	6.1	6.7	5.8
40000	6.9	6.5	6.2	6.2	6.4	5.7	6.1	5.7	5.6	7.5	6.9	7.8	7.9	6.3	4.4	7.4
50000	6.8	6.5	6.2	6.2	6.4	5.8	6.0	5.7	5.3	7.5	7.0	7.8	7.9	6.3	5.7	7.2
60000	6.8	6.5	6.2	6.3	6.5	5.9	6.0	5.7	5.5	7.6	7.0	7.9	7.9	6.3	6.0	7.4
70000	6.8	6.6	6.3	6.6	6.5	5.9	6.1	5.7	5.3	7.6	7.0	7.9	8.0	6.5	5.5	7.2
80000	6.8	6.6	6.4	6.4	6.5	6.0	6.1	5.6	5.5	7.6	7.4	8.0	7.9	6.3	5.6	7.1
90000	6.9	6.7	6.4	6.5	6.5	5.9	6.1	5.7	5.5	7.6	7.1	8.0	8.0	6.5	6.0	6.3
100000	6.8	6.6	6.4	6.4	6.5	5.9	6.0	5.8	5.7	7.7	6.7	8.0	8.0	6.2	6.2	6.4
110000	6.8	6.5	6.3	6.4	6.5	6.0	6.1	5.8	5.6	7.6	6.8	8.0	8.0	6.3	6.2	6.0
120000	6.8	6.5	6.3	6.2	6.5	6.1	6.0	5.9	5.7	7.8	6.8	8.0	8.0	6.5	6.1	6.6
130000	6.7	Missing data due to equipment maintenance	6.2	6.2	6.4	6.1	5.9	6.1	5.4	7.6	Equipment malfunction	7.9	7.0	6.3	6.4	6.5
140000	6.7	5.9	6.2	6.3	6.3	6.2	5.9	6.0	5.7	7.7	Equipment malfunction	7.9	6.5	6.0	6.3	6.1
150000	6.7	5.9	6.1	5.7	6.2	6.2	5.9	6.1	5.7	7.5	Equipment malfunction	7.9	6.1	6.0	6.2	5.9
160000	6.6	5.7	6.0	5.7	6.2	6.2	5.9	6.1	5.6	7.7	Equipment malfunction	7.9	6.0	6.0	6.5	6.1
170000	6.4	5.6	6.0	5.7	6.2	6.1	5.9	6.0	5.4	7.7	Equipment malfunction	7.9	6.3	6.2	6.5	6.0
180000	6.4	5.5	5.8	5.8	6.2	6.1	5.7	5.9	5.4	7.6	6.8	7.9	6.2	6.0	6.2	6.3
190000	6.2	5.6	5.9	5.7	6.3	6.1	6.1	5.8	5.3	7.5	7.1	7.8	6.2	6.4	6.4	5.7
200000	6.3	5.6	5.8	6.0	6.2	5.9	5.7	5.7	5.2	7.5	6.8	7.7	6.2	5.7	6.3	5.9
210000	6.2	5.6	5.9	5.7	6.2	6.0	5.9	5.7	7.5	7.6	6.8	7.8	5.9	6.3	5.8	5.4
220000	6.3	5.7	5.9	6.2	6.2	6.0	6.0	5.6	7.5	7.5	6.9	7.8	6.1	5.8	5.9	5.6
230000	6.3	5.7	6.0	5.8	6.1	6.1	5.8	5.6	7.5	7.7	6.7	7.9	6.1	5.6	5.8	5.8
Daily Max	7.0	6.7	6.4	6.6	6.5	6.2	6.3	6.1	7.5	7.8	7.7	8.0	8.0	6.5	7.1	7.4
Daily Min	6.2	5.5	5.8	5.7	6.0	5.7	5.7	5.6	5.2	7.4	6.7	7.0	5.9	5.6	4.4	5.4
Average	6.7	6.1	6.1	6.1	6.3	6.0	6.0	5.8	5.7	7.6	7.1	7.7	7.1	6.2	6.1	6.3

Missing data due to equipment maintenance
 Equipment malfunction
 Reading below water quality standard
 Water Quality Standard: 5.0 mg/l

High Falls Dissolved Oxygen Summary - July 2010

Time HHMMSS	07/17/10	07/18/10	07/19/10	07/20/10	07/21/10	07/22/10	07/23/10	07/24/10	07/25/10	07/26/10	07/27/10	07/28/10	07/29/10	07/30/10	07/31/10
0	5.6	5.6	7.0	6.2	6.5	7.4	6.6	6.7	7.9	7.9	7.5	7.7	7.3	6.4	5.2
10000	5.9	5.3	6.9	6.2	6.2	7.1	6.4	6.7	7.9	7.9	7.4	7.7	7.1	6.6	5.5
20000	6.0	5.7	6.9	6.1	6.2	6.9	6.3	6.8	7.9	7.9	7.4	7.7	7.0	6.7	5.6
30000	5.6	6.5	7.0	6.4	6.0	7.0	6.3	6.9	8.0	7.9	7.5	7.6	7.2	6.8	5.6
40000	5.5	7.1	5.9	6.2	7.4	6.7	6.8	7.9	7.9	8.0	7.8	6.6	6.6	6.4	6.1
50000	5.7	7.0	5.8	6.1	7.4	6.5	6.6	7.5	7.9	7.9	7.8	6.5	6.4	5.9	6.4
60000	5.8	7.2	6.1	6.4	7.3	6.2	6.8	7.8	7.9	8.0	7.8	6.9	6.4	6.1	6.3
70000	6.0	7.3	5.8	6.2	7.3	6.2	6.4	7.9	7.8	8.0	7.7	6.4	6.9	6.0	6.5
80000	5.6	7.2	6.0	6.2	7.1	6.4	6.6	7.7	8.0	8.1	7.8	6.5	6.5	6.5	6.4
90000	6.2	7.0	5.8	6.2	6.8	6.6	6.6	7.5	7.9	8.0	7.9	6.8	6.4	6.1	6.3
100000	5.8	7.2	5.9	6.3	7.0	6.3	6.6	7.9	7.9	8.1	7.8	6.7	7.2	6.2	6.3
110000	6.4	7.0	6.1	5.7	7.2	6.6	6.3	7.9	8.1	8.1	7.9	7.2	6.6	6.3	6.5
120000	6.3	7.0	5.9	6.1	6.9	6.5	7.0	7.9	7.9	8.1	7.9	7.2	6.9	6.2	6.2
130000	6.5	6.9	6.1	6.3	6.9	6.3	6.8	7.7	7.9	8.0	7.8	6.9	6.5	6.2	6.3
140000	6.0	7.1	6.3	6.2	7.0	6.0	6.3	7.9	8.1	6.0	8.0	7.5	6.8	6.0	6.3
150000	6.2	6.9	6.2	6.2	7.1	6.0	6.6	7.9	8.1	6.2	7.8	7.0	6.7	6.0	6.4
160000	6.1	7.2	5.8	6.5	7.0	6.3	7.0	7.9	8.1	6.3	7.9	7.4	7.2	5.8	6.6
170000	6.0	7.0	5.9	6.2	7.2	5.8	6.7	7.8	8.0	5.8	7.9	7.4	7.0	5.9	6.2
180000	5.9	7.0	6.1	6.0	7.1	6.2	6.8	8.0	7.9	5.8	7.8	7.0	6.8	5.8	6.2
190000	6.0	6.8	6.5	6.2	7.2	6.3	6.6	7.9	8.0	5.0	7.9	7.1	6.6	5.6	6.3
200000	5.6	7.1	6.2	6.1	6.9	6.1	6.2	7.9	7.9	5.6	7.7	6.9	6.8	5.6	6.5
210000	5.5	7.1	6.2	5.9	7.0	6.2	6.6	7.9	7.9	7.5	7.7	6.6	6.6	5.5	6.4
220000	5.6	7.0	5.9	6.0	7.2	6.0	6.8	7.9	8.0	7.5	7.7	7.0	6.2	5.9	6.7
230000	5.6	6.9	6.4	5.8	7.2	6.2	6.5	7.9	7.9	7.5	7.8	7.0	6.1	5.5	6.4
Daily Max	6.5	7.3	7.0	6.5	7.4	7.4	7.0	8.0	8.1	8.1	8.0	7.7	7.3	6.8	6.7
Daily Min	5.5	5.3	5.8	5.7	6.0	5.8	6.2	6.7	7.8	5.0	7.4	6.4	6.1	5.5	5.2
Average	5.9	6.8	6.2	6.1	7.0	6.4	6.6	7.6	7.9	7.3	7.8	7.1	6.7	6.1	6.2

High Falls Dissolved Oxygen Summary - August 2010

HHMMSS	08/01/10	08/02/10	08/03/10	08/04/10	08/05/10	08/06/10	08/07/10	08/08/10	08/09/10	08/10/10	08/11/10	08/12/10	08/13/10	08/14/10	08/15/10	08/16/10
0	6.4	7.2	7.4	6.5	7.2	6.8	7.6	7.8	6.7	5.7	5.7	6.8	7.3	7.4	7.7	7.8
10000	6.6	7.1	7.4	6.6	7.3	7.0	7.8	7.7	6.9	5.9	5.4	6.8	7.5	6.8	7.7	7.8
20000	6.5	7.2	7.4	6.3	7.3	7.1	7.5	7.6	7.0	5.9	5.7	6.2	7.3	7.2	7.7	7.8
30000	6.5	7.3	7.5	6.5	7.3	6.8	7.6	7.8	6.6	5.9	5.9	5.8	7.3	7.3	7.7	7.8
40000	7.4	7.5	6.5	7.2	7.3	6.8	7.6	7.2	5.6	5.8	6.5	7.5	7.2	7.8	7.7	7.8
50000	7.4	7.6	6.4	7.3	7.3	6.7	7.9	5.8	5.5	5.5	6.8	7.3	7.4	7.7	7.7	7.7
60000	7.6	7.5	6.8	7.3	7.3	7.2	7.9	6.8	5.4	5.9	6.3	7.6	7.4	7.8	7.7	7.7
70000	7.7	7.7	6.6	7.4	7.2	7.2	7.9	6.5	6.8	5.6	6.4	7.4	7.3	7.8	7.7	7.7
80000	7.5	7.6	6.7	7.4	7.4	7.2	7.9	6.5	6.4	5.3	6.5	7.3	7.1	7.8	7.7	7.6
90000	7.6	7.6	6.6	7.4	7.4	7.2	7.9	6.6	5.6	5.5	6.2	7.6	7.3	7.8	7.8	7.3
100000	7.6	7.8	6.8	7.5	7.5	7.3	8.1	6.7	6.7	5.9	6.3	7.4	7.4	7.8	7.8	7.7
110000	7.5	7.7	7.0	7.5	7.5	7.3	8.2	6.3	6.5	6.4	6.5	7.4	7.5	7.8	7.9	7.8
120000	7.4	7.8	6.5	7.6	7.5	7.9	8.1	7.2	6.3	6.2	6.4	7.5	7.6	7.8	7.8	8.1
130000	7.5	7.7	6.7	7.7	7.4	8.0	7.9	7.1	6.0	5.4	6.3	7.4	7.3	7.8	7.9	7.9
140000	7.6	7.8	6.6	7.6	7.4	8.0	8.1	6.8	5.9	6.0	6.2	7.4	7.1	7.9	7.9	8.0
150000	7.4	7.8	6.5	7.5	7.4	7.9	7.9	6.7	6.1	6.4	7.0	7.6	7.6	7.8	7.8	8.0
160000	7.5	7.6	6.7	7.7	7.3	7.9	8.2	7.0	6.3	5.5	6.6	7.5	7.3	7.8	7.9	8.0
170000	7.3	7.7	6.9	7.3	7.3	7.9	8.1	6.7	5.5	5.9	6.7	7.7	7.4	7.8	7.8	8.0
180000	7.4	7.6	6.5	6.5	7.2	8.0	8.0	6.4	5.8	5.8	6.8	7.6	7.5	7.8	7.8	8.0
190000	7.5	7.5	6.3	6.2	7.1	7.8	7.9	6.9	5.7	5.7	6.5	7.4	7.2	7.7	7.7	8.0
200000	7.3	7.6	6.4	6.8	6.8	7.6	7.7	6.2	5.7	5.7	6.7	7.1	7.5	7.7	7.7	7.9
210000	7.3	7.6	6.5	6.8	6.8	7.6	7.8	6.8	5.9	5.6	6.4	7.4	7.3	7.7	7.7	7.9
220000	7.4	7.5	6.2	6.8	6.8	7.7	7.8	6.8	5.8	5.2	6.2	7.5	7.3	7.7	7.7	8.0
230000	7.2	7.5	6.2	7.1	6.7	7.6	7.8	6.8	5.7	6.0	6.4	7.4	7.0	7.7	7.8	8.0
Daily Max	7.7	7.8	7.5	7.7	7.5	8.0	8.2	7.8	7.0	6.4	7.0	7.7	7.6	7.9	7.9	8.1
Daily Min	6.4	7.1	6.2	6.2	6.7	6.7	7.5	5.8	5.4	5.2	5.4	5.8	7.0	6.8	7.7	7.3
Average	7.3	7.6	6.7	7.1	7.2	7.4	7.9	6.9	6.1	5.8	6.4	7.3	7.3	7.7	7.8	7.8

Water Quality Standard: 5.0 mg/l

High Falls Dissolved Oxygen Summary - August 2010

HHMMSS	08/17/10	08/18/10	08/19/10	08/20/10	08/21/10	08/22/10	08/23/10	08/24/10	08/25/10	08/26/10	08/27/10	08/28/10	08/29/10	08/30/10	08/31/10
0	8.0	7.9	7.5	7.7	7.9	6.9	7.8	7.8	6.8	7.7	7.9	8.1	8.1	8.0	8.0
10000	8.0	8.0	7.5	7.7	7.9	6.8	7.8	7.8	7.1	7.6	7.9	8.1	8.1	8.0	8.0
20000	8.0	8.0	7.5	7.6	7.9	6.9	7.8	7.6	7.1	7.5	7.9	8.1	8.2	8.0	7.9
30000	8.0	8.0	7.5	7.7	7.9	6.5	7.8	7.6	6.9	7.6	7.9	8.1	8.2	8.0	7.9
40000	8.0	6.7	7.7	7.9	6.5	7.8	7.7	7.0	6.9	7.9	7.8	8.2	8.2	8.0	7.9
50000	8.0	6.3	7.5	8.0	6.8	7.8	7.8	6.6	7.0	7.9	7.8	8.2	8.2	8.0	7.9
60000	8.1	6.8	7.5	8.0	6.7	7.8	7.8	6.5	6.9	7.9	7.7	8.2	8.2	8.0	7.9
70000	8.1	6.2	7.6	8.0	6.7	7.9	7.8	6.7	7.3	8.0	7.8	8.2	8.2	8.0	7.9
80000	8.1	6.6	7.6	8.0	7.0	8.0	7.8	6.8	7.2	7.9	7.8	8.3	8.2	8.1	8.0
90000	8.2	6.6	7.8	8.0	6.8	8.0	7.7	6.9	7.1	7.8	7.8	8.3	8.1	8.1	8.0
100000	8.2	7.1	7.8	8.0	6.9	8.0	7.9	6.9	7.3	8.1	7.9	8.3	8.3	8.2	8.1
110000	8.2	7.0	8.0	8.0	6.8	8.0	7.9	6.7	7.0	8.0	7.9	8.3	8.3	8.2	8.0
120000	8.2	6.6	7.9	8.0	7.1	8.0	7.8	7.1	7.4	7.8	7.9	8.4	8.2	8.2	8.1
130000	8.3	7.0	7.9	8.0	7.2	8.0	7.9	7.4	7.6	7.9	7.9	8.4	8.3	8.2	8.1
140000	8.3	6.6	7.8	8.0	7.1	8.0	7.9	6.9	7.4	7.8	7.9	8.4	8.3	8.2	8.0
150000	8.3	6.9	7.9	8.1	7.3	8.0	7.8	6.9	7.4	8.0	8.3	8.2	8.2	8.2	8.1
160000	7.9	6.9	7.8	8.0	7.1	8.0	7.8	7.0	7.7	7.9	8.3	8.3	8.1	8.1	8.0
170000	7.8	7.1	7.7	7.9	7.1	7.9	7.9	7.1	7.6	8.0	7.7	8.3	8.2	8.1	8.0
180000	8.0	6.7	7.8	7.9	7.2	7.8	7.7	7.2	7.3	7.7	8.1	8.3	8.1	8.1	7.9
190000	7.9	6.9	7.6	7.9	7.0	7.7	7.8	6.8	7.4	7.8	8.1	8.2	8.1	8.0	7.9
200000	7.9	6.9	7.7	7.9	7.0	7.7	7.7	7.3	7.6	7.9	8.0	8.2	8.1	8.0	7.9
210000	8.0	7.4	7.9	7.9	6.9	7.7	7.8	7.1	7.6	7.9	8.0	8.1	8.1	8.0	7.9
220000	7.9	7.6	7.8	7.9	7.0	7.7	7.8	7.3	7.4	7.9	8.1	8.1	8.0	8.0	7.9
230000	7.9	7.4	7.6	7.9	7.0	7.7	7.8	6.7	7.4	7.9	8.1	8.1	8.0	8.0	7.9
Daily Max	8.3	8.0	8.0	8.1	7.9	8.0	7.9	7.8	7.7	8.1	8.3	8.4	8.3	8.2	8.1
Daily Min	7.8	6.2	7.5	7.6	6.5	6.5	7.7	6.5	6.8	7.5	7.7	8.1	8.0	8.0	7.9
Average	8.1	7.0	7.7	7.9	7.1	7.7	7.8	7.1	7.3	7.8	7.9	8.2	8.2	8.1	8.0

High Falls Dissolved Oxygen Summary - September 2010

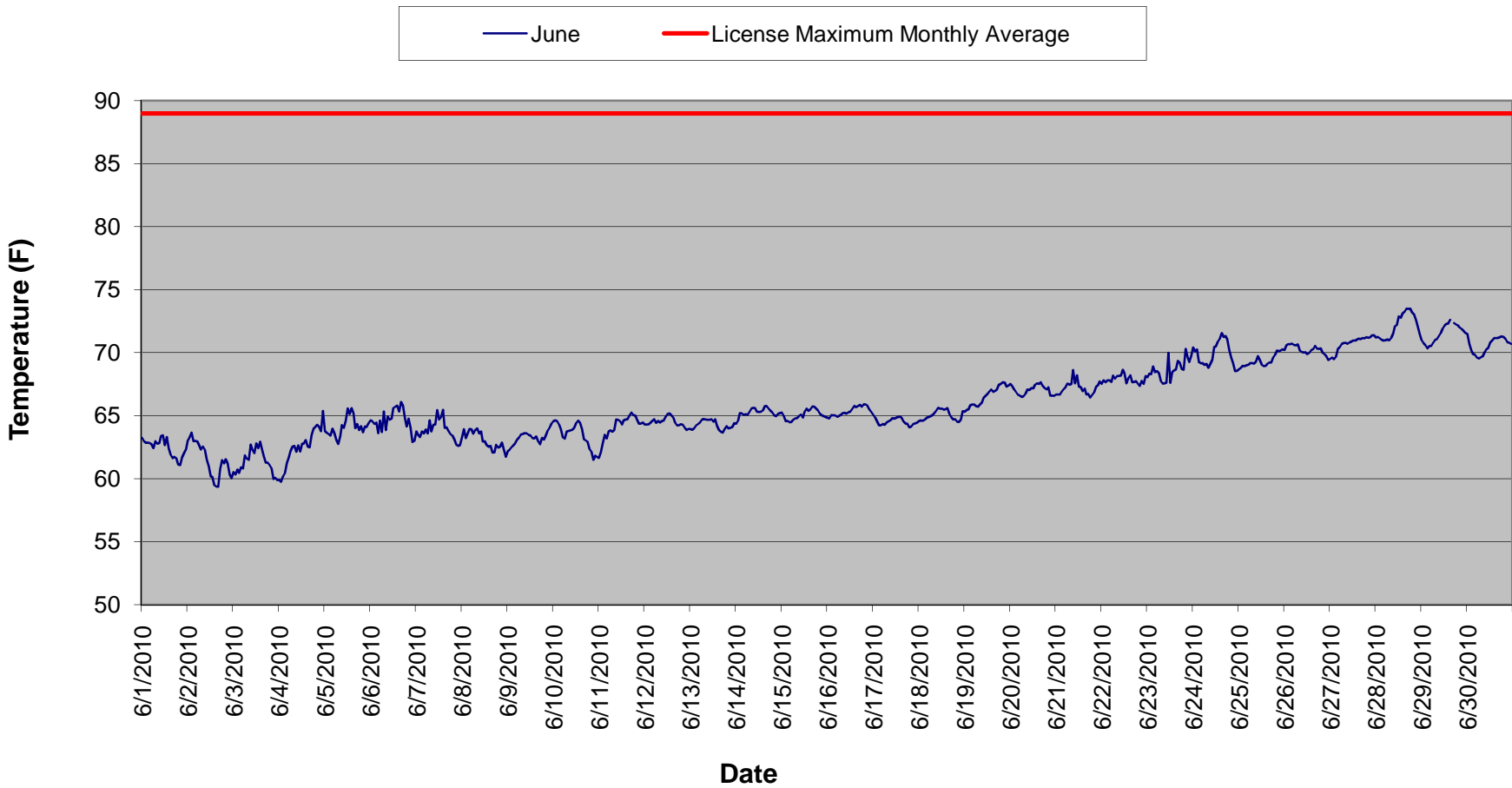
Time HHMMSS	09/01/10	09/02/10	09/03/10	09/04/10	09/05/10	09/06/10	09/07/10	09/08/10	09/09/10	09/10/10	09/11/10	09/12/10	09/13/10	09/14/10	09/15/10	09/16/10
0	7.8	7.8	5.7	7.4	8.5	8.4	8.2	7.3	8.6	8.3	8.1	8.4	7.7	8.6	7.7	8.8
10000	7.8	7.8	5.8	7.3	8.5	8.4	8.0	7.3	8.6	8.3	8.1	8.4	7.7	8.6	7.9	8.8
20000	7.8	7.8	5.9	7.3	8.5	8.4	8.1	7.4	8.6	8.4	8.1	8.2	7.6	8.4	7.7	8.8
30000	7.8	7.8	5.9	7.3	8.5	8.3	8.2	7.2	8.4	8.4	8.1	8.3	7.6	8.4	7.9	8.8
40000	7.7	7.6	5.9	8.3	8.3	8.4	7.2	8.5	7.9	8.1	8.4	7.6	8.3	7.9	8.9	8.1
50000	7.7	7.6	6.0	8.4	8.4	8.3	7.1	8.6	8.1	8.3	8.4	7.8	8.2	7.8	8.9	8.3
60000	7.8	7.6	5.9	8.4	8.5	8.3	7.3	8.6	8.1	8.3	8.3	7.6	8.3	7.9	8.9	7.8
70000	7.7	7.5	5.9	8.4	8.5	8.4	7.3	8.6	8.0	8.4	8.3	7.6	8.3	7.8	8.9	8.3
80000	7.7	7.6	5.8	8.5	8.4	8.4	7.2	8.6	8.2	7.9	8.3	7.5	8.3	7.8	9.0	8.4
90000	7.9	7.4	5.7	8.5	8.4	8.4	7.2	8.5	8.3	8.0	8.3	7.7	8.3	8.0	9.0	8.3
100000	7.9	7.4		8.6	8.6	8.4	7.2	8.7	8.0	8.3	8.4	7.8	8.1	7.9	9.0	8.3
110000	7.9	7.7	6.1	8.6	8.5	8.2	7.4	8.6	8.2	8.0	8.4	7.4	8.2	8.1	8.9	7.8
120000	7.9	7.3	5.9	8.6	8.6	8.3	6.8	8.5	8.3	8.1	8.5	7.5	8.0	8.0	8.9	7.9
130000	7.9	7.0	6.6	8.6	8.6	8.4	6.9	8.5	8.1	8.4	8.4	7.7	8.3	7.7	9.0	7.8
140000	7.8	6.6	6.3	8.6	8.6	8.3	7.4	8.6	8.1	8.4	8.4	7.6	8.3	7.8	8.9	7.7
150000	7.8	5.9	6.2	8.6	8.5	8.3	6.9	8.5	8.3	8.2	8.3	7.5	8.2	8.0	8.8	7.8
160000	7.8	6.1	6.8	8.6	8.5	8.4	7.2	8.4	8.2	8.1	8.4	7.6		7.9	8.9	7.7
170000	7.9	5.9	7.2	8.6	8.4	8.4	7.3	8.5	8.2	8.2	8.4	7.6	8.5	7.9	8.8	8.0
180000	7.8	5.6	7.5	8.5	8.4	8.2	7.3	8.5	8.1	8.3	8.4	7.7	8.5	7.9	8.9	7.6
190000	7.7	5.9	7.4	8.5	8.4	8.3	7.1	8.5	8.1	8.1	8.4	7.6	8.5	7.7	8.8	7.6
200000	7.7	5.8	7.3	8.5	8.4	8.2	7.2	8.5	8.2	8.2	8.4	7.7	8.5	7.9	8.8	7.6
210000	7.7	6.0	7.4	8.5	8.4	8.3	7.2	8.6	8.3	8.1	8.4	7.7	8.6	7.9	8.8	7.7
220000	7.8	5.9	7.6	8.5	8.4	8.2	7.5	8.5	8.2	8.1	8.3	7.6	8.5	8.0	8.8	7.7
230000	7.8	5.8	7.5	8.5	8.4	8.2	7.4	8.6	8.4	8.3	8.4	7.5	8.6	8.0	8.8	7.6
Daily Max	7.9	7.8	7.6	8.6	8.6	8.4	8.2	8.7	8.6	8.4	8.5	8.4	8.6	8.6	9.0	8.8
Daily Min	7.7	5.6	5.7	7.3	8.3	8.2	6.8	7.2	7.9	7.9	8.1	7.4	7.6	7.7	7.7	7.6
Average	7.8	6.9	6.4	8.3	8.5	8.3	7.4	8.3	8.2	8.2	8.3	7.7	8.2	8.0	8.7	8.1

Missing data due to equipment maintenance
 Water Quality Standard: 5.0 mg/l

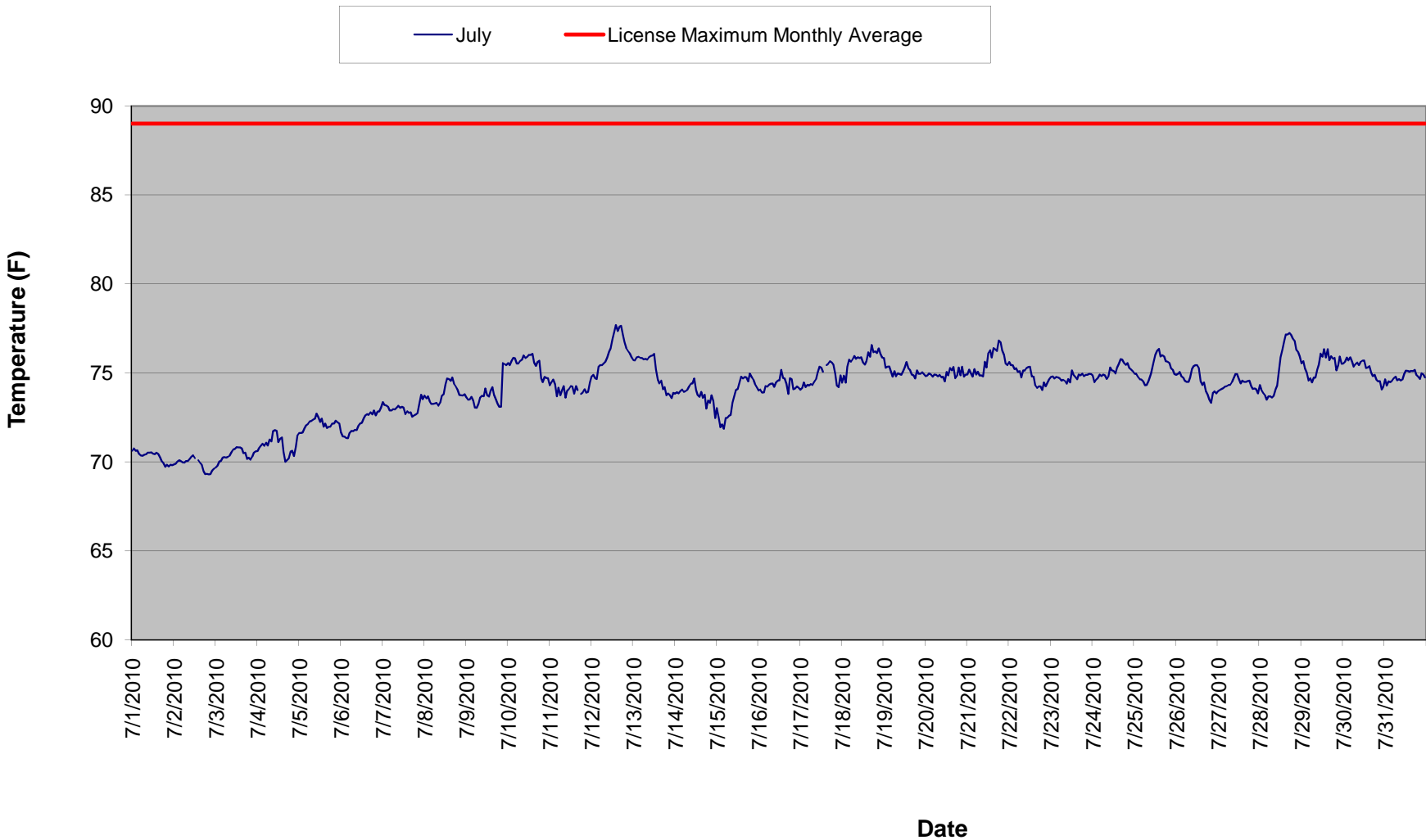
High Falls Dissolved Oxygen Summary - September 2010

Time HHMMSS	09/17/10	09/18/10	09/19/10	09/20/10	09/21/10	09/22/10	09/23/10	09/24/10	09/25/10	09/26/10	09/27/10	09/28/10	09/29/10	09/30/10
0	7.6	7.1	7.4	7.2	7.3	7.6	7.4	7.1	8.0	9.3	9.3	9.3	8.8	7.4
10000	7.6	7.2	7.3	7.1	7.4	7.7	7.5	6.9	8.0	9.3	9.3	9.3	8.9	7.4
20000	7.4	7.1	7.4	7.2	7.4	7.6	7.3	6.9	8.0	9.3	9.3	9.3	8.9	7.3
30000	7.4	7.3	7.1	7.0	7.5	7.6	7.4	7.1	8.0	9.3	9.3	9.3	8.8	7.3
40000	7.3	7.1	7.2	7.5	7.3	7.6	7.3	6.8	8.0	9.3	9.3	9.3	9.1	7.4
50000	7.3	7.2	7.2	7.4	7.3	7.8	7.5	6.9	8.0	9.3	9.3	9.4	9.1	7.4
60000	7.2	7.3	7.2	7.5	7.2	7.8	7.4	7.0	8.1	9.3	9.3	9.4	9.1	7.4
70000	7.2	7.2	7.3	7.4	7.3	7.8	7.4	7.0	8.0	9.3	9.4	9.4	9.1	7.4
80000	7.3	7.4	7.2	7.5	7.3	7.8	7.4	7.2	8.0	9.3	9.4	9.3	9.1	7.4
90000	7.5	7.4	7.2	7.5	7.4	7.8	7.3	7.2	8.0	9.3	9.4	8.8	7.5	7.4
100000	7.4	7.3	7.2	7.4	7.4	7.9	7.3	7.2	8.0	9.4	9.3	8.8	7.4	7.5
110000	7.5	7.3	7.3	7.7	7.3	7.8	7.3	7.2	8.0	9.3	9.3	8.8	7.3	7.5
120000	7.3	7.3	7.2	7.4	7.5	7.9	7.4	7.4	8.1	9.3	9.3	8.9	7.2	7.6
130000	7.5	7.4	7.4	7.5	7.2	7.9	7.4	7.5	8.1	9.3	9.3	8.9	7.3	7.6
140000	7.2	7.4	7.2	7.4	7.3	8.1	7.5	7.5	9.2	9.3	9.3	8.9	7.2	7.6
150000	7.3	7.5	7.4	7.5	7.5	7.9	7.6	7.5	9.2	9.3	9.3	8.9	7.3	7.7
160000	7.4	7.5	7.4	7.4	7.5	7.8	7.8	7.8	9.2	9.3	9.3	8.9	7.3	7.7
170000	7.3	7.5	7.4	7.6	7.5	7.4	7.7	7.8	9.2	9.3	9.3	8.9	7.2	7.7
180000	7.4	7.5	7.3	7.5	7.4	7.5	7.6	7.9	9.2	9.3	9.3	8.9	7.2	7.6
190000	7.4	7.4	7.1	7.5	7.3	7.4	7.6	7.9	9.2	9.3	9.3	8.9	7.4	7.6
200000	7.2	7.4	7.2	7.4	7.4	7.3	7.5	7.9	9.2	9.3	9.3	8.9	7.5	7.5
210000	7.1	7.5	7.2	7.5	7.4	7.3	7.3	8.0	9.3	9.3	9.3	8.9	7.5	7.6
220000	7.2	7.4	7.1	7.4	7.5	7.4	7.2	7.9	9.3	9.3	9.3	8.9	7.5	7.5
230000	7.3	7.4	7.2	7.4	7.6	7.3	7.0	8.0	9.3	9.3	9.3	8.9	7.4	7.5
Daily Max	7.6	7.5	7.4	7.7	7.6	8.1	7.8	8.0	9.3	9.4	9.4	9.4	9.1	7.7
Daily Min	7.1	7.1	7.1	7.0	7.2	7.3	7.0	6.8	8.0	9.3	9.3	8.8	7.2	7.3
Average	7.3	7.3	7.3	7.4	7.4	7.7	7.4	7.4	8.5	9.3	9.3	9.0	8.0	7.5

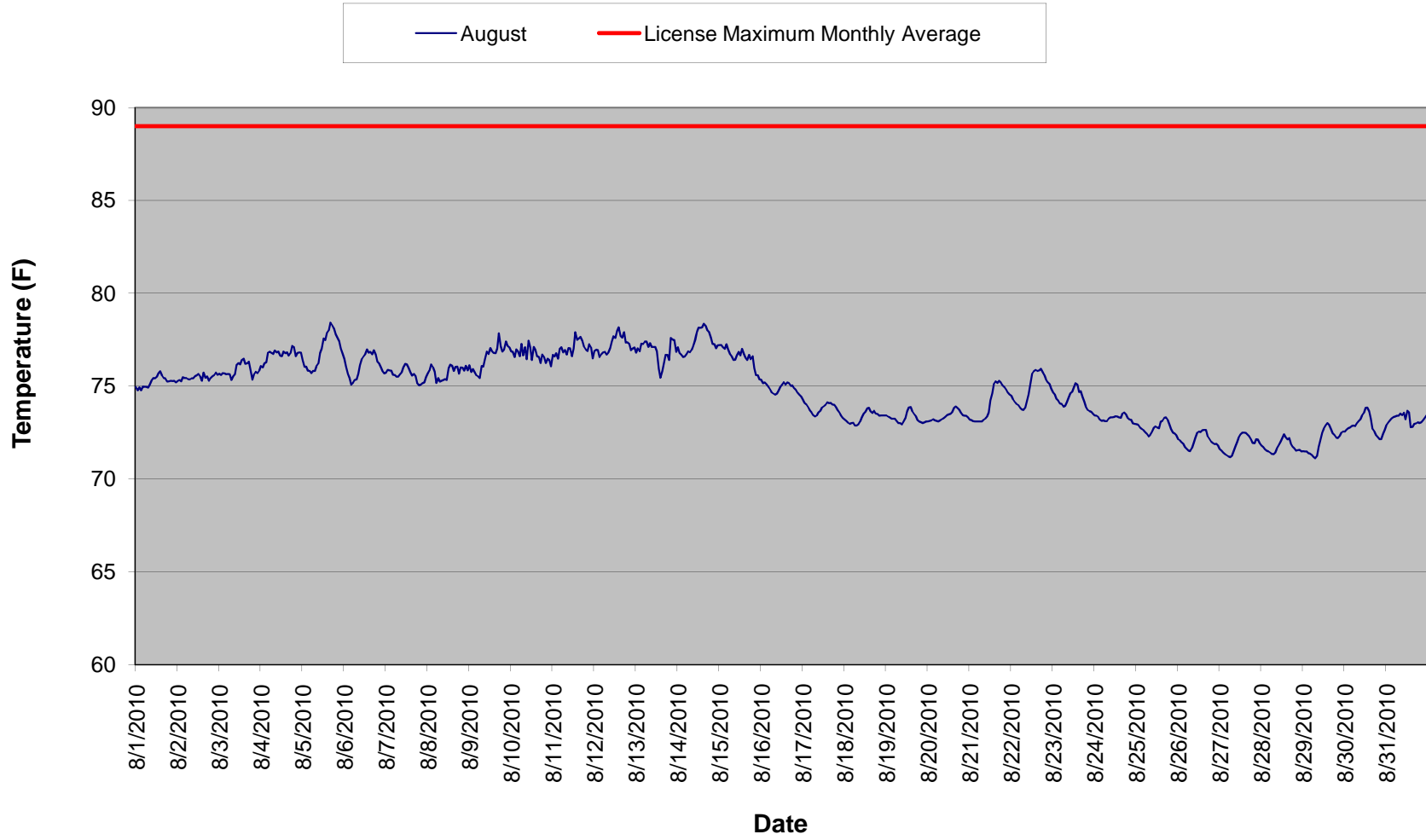
High Falls Temperature Monitoring - June 2010



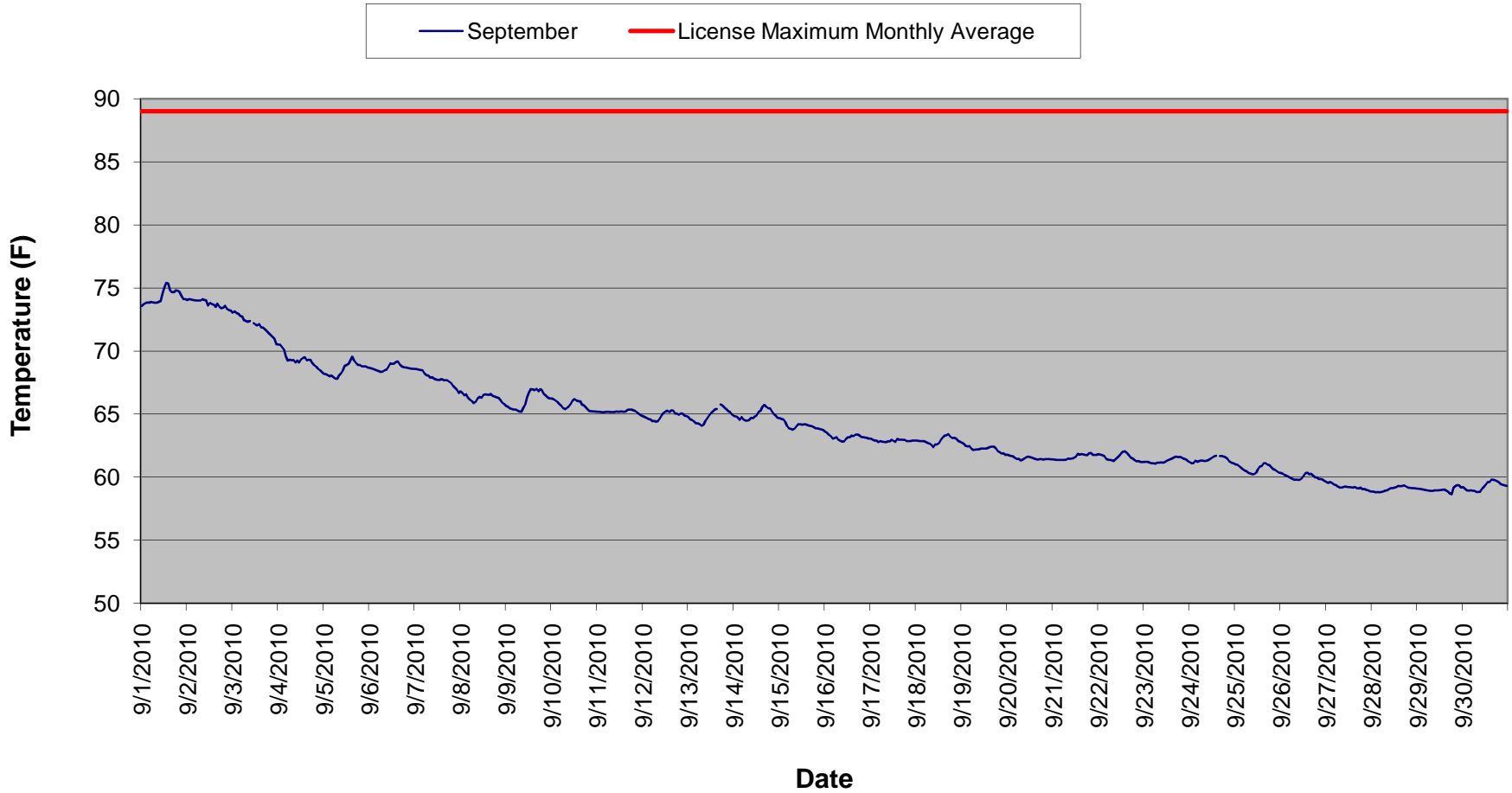
High Falls Temperature Monitoring - July 2010



High Falls Temperature Monitoring - August 2010



High Falls Temperature Monitoring - September 2010



High Falls Temperature Monitoring - June 2010

Time HHMMSS	06/01/10	06/02/10	06/03/10	06/04/10	06/05/10	06/06/10	06/07/10	06/08/10	06/09/10	06/10/10	06/11/10	06/12/10	06/13/10	06/14/10	06/15/10	06/16/10
0	63.2	63.0	60.5	59.9	63.8	64.6	63.8	63.3	62.2	64.6	61.6	64.3	63.9	64.4	65.2	64.8
10000	63.0	63.2	60.3	59.7	63.6	64.5	63.5	63.9	62.3	64.6	62.1	64.3	63.9	64.6	65.0	64.8
20000	62.8	63.6	60.7	60.2	63.5	64.3	63.3	63.2	62.5	64.5	62.8	64.3	64.0	65.2	64.6	65.0
30000	62.9	63.0	60.5	60.4	63.4	64.5	63.8	63.6	62.6	64.3	63.5	64.4	64.2	65.2	64.6	65.0
40000	62.8	63.0	60.9	61.2	64.0	63.6	63.6	63.9	62.8	63.9	63.2	64.6	64.3	65.1	64.5	65.0
50000	62.7	62.9	60.8	61.7	63.6	64.6	63.9	63.9	63.1	63.3	63.7	64.7	64.5	65.1	64.5	64.9
60000	62.4	62.6	61.8	62.2	63.1	63.7	63.6	63.6	63.3	63.2	63.8	64.4	64.7	65.1	64.7	65.0
70000	63.0	62.3	61.6	62.5	62.7	65.3	64.6	63.9	63.5	63.8	63.7	64.6	64.7	65.3	64.8	65.1
80000	62.8	62.5	61.5	62.6	63.4	63.9	63.8	64.0	63.5	63.8	63.9	64.5	64.7	65.6	64.8	65.2
90000	62.8	62.3	62.7	62.1	64.3	64.9	64.3	63.6	63.6	63.8	64.7	64.6	64.7	65.6	65.0	65.2
100000	63.4	61.5	62.3	62.6	64.0	64.7	64.3	63.8	63.6	63.9	64.7	64.6	64.7	65.6	65.1	65.2
110000	63.4	61.0	62.0	62.2	64.6	64.8	65.4	62.9	63.5	64.0	64.6	64.9	64.7	65.3	64.9	65.3
120000	62.7	60.2	62.8	62.8	65.6	65.6	64.7	63.0	63.4	64.4	64.3	65.1	64.5	65.3	65.3	65.3
130000	63.3	60.1	62.4	62.8	65.1	65.7	64.9	62.7	63.2	64.6	64.6	65.2	64.7	65.3	65.6	65.6
140000	62.4	59.5	62.9	63.1	65.6	65.8	65.5	62.5	63.2	64.4	64.7	65.0	64.2	65.4	65.4	65.8
150000	61.9	59.4	62.3	62.5	65.2	65.3	64.0	62.6	63.3	63.9	64.7	64.8	63.8	65.8	65.5	65.7
160000	61.6	59.4	61.8	62.5	64.0	66.1	64.1	62.1	63.0	63.1	65.0	64.5	63.7	65.8	65.7	65.8
170000	61.7	60.8	61.3	63.4	64.3	65.8	63.8	62.1	62.7	63.0	65.2	64.2	63.6	65.6	65.7	65.9
180000	61.6	61.5	61.3	64.0	63.9	64.8	63.5	62.7	63.2	62.9	65.0	64.2	64.0	65.4	65.6	65.7
190000	61.1	61.2	61.1	64.1	64.2	64.1	63.4	62.5	63.1	62.3	65.0	64.3	64.2	65.2	65.4	65.9
200000	61.1	61.5	60.8	64.3	63.7	64.8	63.1	62.5	63.4	62.1	64.7	64.3	64.0	65.0	65.2	65.9
210000	61.7	61.2	60.0	64.1	64.1	64.1	62.7	62.9	63.8	61.5	64.4	64.0	64.0	65.0	65.0	65.8
220000	62.0	60.4	60.1	63.8	64.1	62.9	62.6	62.3	64.0	61.8	64.4	63.8	64.1	65.1	65.0	65.5
230000	62.3	60.0	59.9	65.4	64.4	63.0	62.7	61.7	64.4	61.7	64.5	64.0	64.4	65.2	64.9	65.3
Daily Max	63.4	63.6	62.9	65.4	65.6	66.1	65.5	64.0	64.4	64.6	65.2	65.2	64.7	65.8	65.7	65.9
Daily Min	61.1	59.4	59.9	59.7	62.7	62.9	62.6	61.7	62.2	61.5	61.6	63.8	63.6	64.4	64.5	64.8
Average	62.4	61.5	61.3	62.5	64.1	64.6	63.9	63.0	63.2	63.5	64.1	64.5	64.3	65.3	65.1	65.4

Monthly average: 66.0
 License Maximum Monthly Average: 89 F

Data missing - equipment retrieval/replacement

High Falls Temperature Monitoring - June 2010

Time HHMMSS	06/17/10	06/18/10	06/19/10	06/20/10	06/21/10	06/22/10	06/23/10	06/24/10	06/25/10	06/26/10	06/27/10	06/28/10	06/29/10	06/30/10
0	65.1	64.6	65.3	67.5	66.7	67.5	68.0	70.4	68.7	70.2	69.5	71.2	71.0	71.5
10000	64.9	64.6	65.4	67.4	66.7	67.8	68.3	70.1	68.8	70.6	69.6	71.2	70.8	70.7
20000	64.5	64.6	65.5	67.1	66.7	67.7	68.3	70.3	69.0	70.7	69.5	71.1	70.6	70.2
30000	64.2	64.7	65.8	66.9	66.9	67.8	68.9	69.2	68.9	70.7	69.7	71.0	70.3	69.9
40000	64.2	64.8	65.9	66.7	67.1	67.8	68.5	69.2	69.0	70.7	70.3	71.0	70.5	69.8
50000	64.3	64.9	65.9	66.6	67.3	67.7	68.5	69.2	69.0	70.6	70.4	71.0	70.5	69.6
60000	64.3	65.0	65.8	66.5	67.5	68.2	68.4	69.0	69.2	70.6	70.7	71.0	70.8	69.5
70000	64.5	65.0	65.7	66.5	67.5	67.9	67.7	69.1	69.2	70.6	70.8	71.0	71.0	69.6
80000	64.5	65.2	65.9	66.7	67.5	68.1	67.5	68.8	69.1	70.2	70.8	71.2	71.1	69.7
90000	64.6	65.4	66.0	67.1	68.6	68.2	67.6	69.1	69.3	70.1	70.7	71.5	71.3	70.0
100000	64.8	65.6	66.4	67.0	67.6	68.2	67.6	69.4	69.7	70.0	70.8	72.1	71.5	70.3
110000	64.8	65.6	66.6	67.2	68.2	68.6	70.0	70.4	69.4	70.0	70.9	72.2	71.9	70.4
120000	64.8	65.6	66.7	67.2	67.3	68.4	67.6	70.5	69.0	69.9	71.0	72.9	72.1	70.8
130000	64.9	65.5	66.9	67.4	67.3	67.6	68.5	70.9	68.9	70.0	71.0	72.8	72.3	71.0
140000	64.9	65.5	67.1	67.6	66.9	68.0	68.6	71.1	69.0	70.2	71.0	73.1	72.3	71.2
150000	64.8	65.6	66.9	67.5	67.1	68.2	68.7	71.6	69.1	70.3	71.1	73.3	72.6	71.2
160000	64.5	65.1	67.0	67.6	66.7	67.6	69.4	71.2	69.2	70.5	71.1	73.5		71.2
170000	64.4	64.9	67.1	67.4	66.7	67.7	69.2	71.3	69.2	70.3	71.2	73.5	72.4	71.2
180000	64.4	64.7	67.5	67.2	66.4	67.7	68.7	71.0	69.6	70.3	71.1	73.5	72.2	71.3
190000	64.1	64.7	67.5	67.1	66.7	67.5	68.6	70.2	69.8	70.3	71.2	73.2	72.1	71.2
200000	64.1	64.5	67.7	67.2	66.8	67.4	70.3	69.6	70.2	70.0	71.2	73.0	72.0	71.1
210000	64.3	64.5	67.6	66.6	67.3	67.7	69.7	69.2	70.1	69.9	71.2	72.6	71.9	70.8
220000	64.4	64.7	67.3	66.6	67.4	67.5	69.3	68.5	70.2	69.7	71.4	72.0	71.7	70.8
230000	64.5	65.4	67.4	66.6	67.7	68.1	69.7	68.6	70.3	69.4	71.4	71.4	71.6	70.7
Daily Max	65.1	65.6	67.7	67.6	68.6	68.6	70.3	71.6	70.3	70.7	71.4	73.5	72.6	71.5
Daily Min	64.1	64.5	65.3	66.5	66.4	67.4	67.5	68.5	68.7	69.4	69.5	71.0	70.3	69.5
Average	64.5	65.0	66.5	67.0	67.2	67.9	68.6	69.9	69.3	70.2	70.7	72.1	71.5	70.6

Monthly average: 66.0
 License Maximum Monthly Average: 89 F

Data missing - equipment retrieval/replacement

High Falls Temperature Monitoring - July 2010

Time	07/01/10	07/02/10	07/03/10	07/04/10	07/05/10	07/06/10	07/07/10	07/08/10	07/09/10	07/10/10	07/11/10	07/12/10	07/13/10	07/14/10	07/15/10	07/16/10
0	70.6	69.9	69.7	70.6	71.6	71.7	73.4	73.7	73.6	75.6	74.3	74.8	75.7	73.8	73.0	74.0
10000	70.8	69.9	69.8	70.8	71.6	71.4	73.2	73.6	73.5	75.4	74.5	74.9	75.7	73.9	72.5	74.1
20000	70.6	70.0	70.0	70.9	71.7	71.4	73.2	73.7	73.5	75.7	74.6	74.7	75.9	73.9	71.9	73.9
30000	70.6	70.1	70.1	71.0	71.9	71.3	73.1	73.4	73.7	75.8	74.4	74.7	75.9	74.0	72.1	73.9
40000	70.4	70.1	70.2	70.9	72.1	71.3	72.9	73.3	73.4	75.8	73.7	75.3	75.8	74.1	71.9	74.3
50000	70.4	70.0	70.3	71.1	72.1	71.6	72.9	73.3	73.1	75.5	74.2	75.4	75.8	73.9	72.5	74.2
60000	70.3	70.0	70.2	70.9	72.3	71.7	73.0	73.3	73.0	75.5	73.7	75.4	75.8	74.0	72.5	74.3
70000	70.4	70.1	70.3	71.3	72.3	71.7	73.0	73.3	73.3	75.7	74.0	75.5	75.8	74.0	72.6	74.4
80000	70.4	70.1	70.3	71.2	72.4	71.8	73.1	73.1	73.6	75.7	74.3	75.6	75.7	74.2	72.6	74.4
90000	70.5	70.2	70.5	71.7	72.4	71.8	73.1	73.3	73.7	76.0	73.6	75.9	75.9	74.4	73.3	74.2
100000	70.5	70.3	70.7	71.8	72.7	72.0	73.0	73.7	73.7	75.8	74.0	76.2	76.0	74.4	73.7	74.5
110000	70.5	70.4	70.7	71.7	72.5	72.2	73.1	73.8	74.1	75.9	74.1	76.4	76.0	74.7	74.0	74.6
120000	70.5	70.2	70.8	71.1	72.2	72.2	73.1	74.4	73.7	76.0	74.3	76.9	76.1	74.0	74.1	74.6
130000	70.4		70.8	71.3	72.4	72.4	72.7	74.7	73.7	76.0	74.2	77.3	75.2	73.8	74.5	75.2
140000	70.5	70.1	70.8	71.4	72.0	72.6	72.8	74.7	74.0	76.1	73.8	77.7	74.6	73.7	74.8	74.7
150000	70.4	70.0	70.8	70.6	72.2	72.7	72.8	74.6	74.2	75.6	74.3	77.3	74.4	73.9	74.7	74.7
160000	70.3	69.8	70.5	70.0	71.9	72.6	72.8	74.8	73.8	75.4	74.0	77.6	74.6	73.6	74.8	74.4
170000	70.1	69.5	70.5	70.1	72.0	72.8	72.5	74.4	73.5	75.6		77.6	74.1	73.8	74.8	73.8
180000	69.9	69.3	70.2	70.2	72.0	72.7	72.6	74.2	73.3	75.7	73.8	77.1	74.2	73.0	74.5	74.7
190000	69.7	69.3	70.2	70.6	72.2	72.9	72.7	74.0	73.1	74.7	73.9	76.7	73.7	73.5	75.0	74.6
200000	69.8	69.3	70.1	70.6	72.2	72.6	72.7	73.8	73.1	74.5	74.1	76.4	73.9	73.3	74.8	74.1
210000	69.7	69.3	70.3	70.3	72.3	72.8	73.3	73.7	75.6	74.8	73.9	76.2	73.8	73.7	74.6	74.1
220000	69.8	69.5	70.5	70.8	72.2	72.8	73.8	73.7	75.5	74.7	73.9	76.1	73.6	73.4	74.4	74.2
230000	69.8	69.6	70.6	71.5	72.2	73.1	73.5	73.8	75.4	74.7	74.5	75.9	73.9	72.5	74.2	74.2
Daily Max	70.8	70.4	70.8	71.8	72.7	73.1	73.8	74.8	75.6	76.1	74.6	77.7	76.1	74.7	75.0	75.2
Daily Min	69.7	69.3	69.7	70.0	71.6	71.3	72.5	73.1	73.0	74.5	73.6	74.7	73.6	72.5	71.9	73.8
Average	70.3	69.9	70.4	70.9	72.1	72.2	73.0	73.8	73.8	75.5	74.1	76.2	75.1	73.8	73.7	74.3

Monthly average: 74.0

License Maximum Monthly Average: 89 F

Data missing - equipment retrieval/replacement

High Falls Temperature Monitoring - July 2010

Time	07/17/10	07/18/10	07/19/10	07/20/10	07/21/10	07/22/10	07/23/10	07/24/10	07/25/10	07/26/10	07/27/10	07/28/10	07/29/10	07/30/10	07/31/10
0	74.0	74.4	75.8	74.8	74.9	75.6	74.8	74.9	74.9	74.9	74.0	74.3	75.5	75.5	74.6
10000	74.2	74.8	75.3	74.9	75.2	75.4	74.8	74.5	75.0	74.9	74.0	74.0	75.7	75.6	74.3
20000	74.5	74.4	75.3	75.0	75.0	75.4	74.7	74.6	74.8	75.1	74.1	73.9	75.3	75.9	74.5
30000	74.2	75.3	75.4	74.9	74.8	75.2	74.8	74.7	74.6	74.8	74.1	73.7	75.0	75.7	74.5
40000	74.3	75.7	75.1	74.8	75.2	75.3	74.8	74.9	74.6	74.7	74.2	73.5	74.6	75.9	74.6
50000	74.3	75.6	74.8	74.9	74.9	75.1	74.7	74.8	74.5	74.6	74.3	73.7	74.7	75.6	74.7
60000	74.4	75.8	75.1	74.9	75.1	75.1	74.6	74.9	74.3	74.5	74.3	73.7	74.5	75.3	74.8
70000	74.3	76.0	74.8	74.8	74.8	74.8	74.6	74.9	74.3	74.5	74.3	73.6	74.8	75.5	74.6
80000	74.5	75.8	75.0	74.9	74.9	75.1	74.6	74.7	74.6	74.8	74.5	73.7	74.7	75.6	74.7
90000	74.7	75.9	74.9	74.8	74.8	75.1	74.4	74.8	74.8	75.2	74.7	74.1	75.2	75.4	74.6
100000	75.0	75.8	74.9	74.8	75.6	75.3	74.7	75.3	75.1	75.4	74.9	74.3	75.5	75.6	74.6
110000	75.3	75.9	75.1	74.5	75.3	75.3	74.5	75.1	75.7	75.4	74.9	75.1	76.1	75.7	74.9
120000	75.3	75.6	75.3	75.1	76.1	75.3	75.1	75.1	76.0	75.4	74.7	75.9	75.9	75.7	75.1
130000	75.1	75.5	75.6	74.9	76.3	74.8	74.9	75.0	76.2	75.3	74.4	76.3	76.3	75.3	75.1
140000	75.4	75.7	75.3	75.3	75.9	74.8	74.8	75.3	76.4	74.5	74.6	76.8	75.9	75.3	75.1
150000	75.4	76.2	75.2	75.1	76.4	74.3	74.6	75.5	75.9	74.3	74.5	77.2	76.3	75.4	75.1
160000	75.5	75.9	74.9	75.3	76.3	74.2	74.9	75.8	76.0	74.5	74.5	77.2	75.7	75.0	75.1
170000	75.7	76.6	74.9	74.7	76.2	74.2	74.9	75.7	75.9	74.0	74.5	77.3	75.9	74.8	75.2
180000	75.6	76.2	74.7	74.8	76.8	74.2	75.0	75.6	75.7	73.8	74.6	77.1	75.8	74.9	74.9
190000	75.5	76.2	75.1	75.3	76.7	74.0	74.8	75.5	75.6	73.5	74.3	76.9	75.8	74.6	74.8
200000	74.9	76.1	74.9	74.9	76.3	74.5	74.9	75.6	75.6	73.3	74.1	76.8	75.1	74.5	74.7
210000	74.3	76.4	74.9	75.3	76.0	74.2	74.9	75.3	75.3	73.9	74.1	76.3	75.4	74.5	75.0
220000	74.2	76.1	75.0	74.8	75.5	74.5	74.9	75.2	75.2	74.0	74.1	76.2	75.9	74.1	74.9
230000	74.9	75.9	74.9	74.9	75.4	74.6	74.9	75.1	74.9	73.9	73.9	75.9	75.5	74.2	74.8
Daily Max	75.7	76.6	75.8	75.3	76.8	75.6	75.1	75.8	76.4	75.4	74.9	77.3	76.3	75.9	75.2
Daily Min	74.0	74.4	74.7	74.5	74.8	74.0	74.4	74.5	74.3	73.3	73.9	73.5	74.5	74.1	74.3
Average	74.8	75.7	75.1	74.9	75.6	74.9	74.8	75.1	75.2	74.5	74.4	75.3	75.5	75.2	74.8

Monthly average: 74.0
 License Maximum Monthly Average: 89 F
 Data missing - equipment retrieval/replacement

High Falls Temperature Monitoring - August 2010

Time	08/01/10	08/02/10	08/03/10	08/04/10	08/05/10	08/06/10	08/07/10	08/08/10	08/09/10	08/10/10	08/11/10	08/12/10	08/13/10	08/14/10	08/15/10	08/16/10
HHMMSS																
0	74.9	75.3	75.7	76.1	76.4	76.5	75.7	75.7	76.1	76.9	76.7	76.9	76.8	77.1	77.2	75.3
10000	74.8	75.3	75.6	76.0	76.0	76.0	75.9	75.8	75.8	76.8	76.6	77.0	77.0	76.8	77.2	75.1
20000	74.9	75.3	75.7	76.2	76.0	75.7	75.8	76.2	75.9	76.6	76.8	76.9	76.9	76.7	77.1	75.2
30000	74.8	75.5	75.7	76.3	75.8	75.4	75.8	76.0	75.8	77.0	76.5	76.6	77.3	76.6	77.0	75.1
40000	75.0	75.4	75.6	76.8	75.8	75.1	75.6	75.8	75.6	76.9	77.0	76.7	77.3	76.6	77.3	75.0
50000	75.0	75.4	75.7	76.9	75.7	75.2	75.6	75.2	75.5	76.6	77.1	76.8	77.4	76.7	77.0	74.8
60000	75.0	75.4	75.6	76.8	75.8	75.3	75.5	75.4	75.4	77.3	76.8	76.8	77.4	76.9	76.7	74.7
70000	74.9	75.4	75.3	76.7	75.8	75.4	75.5	75.2	76.1	76.7	76.9	76.7	77.1	76.8	76.6	74.6
80000	75.1	75.4	75.5	76.9	76.1	75.7	75.6	75.3	76.0	77.1	76.7	76.8	77.3	77.0	76.4	74.5
90000	75.3	75.4	75.6	76.8	76.2	76.1	75.7	75.3	76.4	76.4	77.1	77.1	77.1	77.2	76.4	74.6
100000	75.4	75.5	76.1	76.9	76.8	76.5	76.0	75.4	76.9	77.5	77.0	77.4	77.1	77.5	76.7	74.8
110000	75.4	75.6	76.2	76.6	77.0	76.6	76.2	75.3	76.7	77.1	76.6	77.7	77.1	77.9	76.8	74.9
120000	75.5	75.7	76.2	76.6	77.6	76.7	76.2	76.0	77.1	76.4	77.0	77.6	76.9	78.2	76.7	75.1
130000	75.7	75.5	76.4	76.9	77.5	77.0	76.0	76.2	76.9	77.1	77.9	78.0	75.9	78.1	77.0	75.2
140000	75.8	75.3	76.5	76.8	77.9	76.8	75.7	76.1	76.8	76.9	77.5	78.2	75.5	78.2	76.7	75.1
150000	75.6	75.7	76.2	76.8	78.0	76.8	75.6	75.8	76.8	76.6	77.6	77.7	75.8	78.4	76.5	75.2
160000	75.4	75.5	76.2	76.6	78.4	76.7	75.7	76.0	77.0	76.6	77.6	77.6	76.2	78.2	76.4	75.1
170000	75.4	75.5	76.3	76.8	78.3	76.9	75.5	76.0	77.8	76.2	77.4	77.9	76.7	78.0	76.7	75.0
180000	75.2	75.3	75.9	77.2	78.1	76.7	75.1	75.7	77.1	76.7	77.1	77.3	76.7	77.9	76.4	75.0
190000	75.3	75.4	75.3	77.1	77.8	76.3	75.0	76.0	76.9	76.6	77.0	77.4	76.4	77.6	76.6	74.9
200000	75.3	75.5	75.6	76.6	77.6	76.2	75.1	76.0	77.0	76.2	76.9	77.3	77.6	77.3	76.0	74.8
210000	75.3	75.6	75.8	76.8	77.4	76.0	75.1	75.8	77.4	76.5	77.3	76.9	77.5	77.3	75.6	74.6
220000	75.3	75.7	75.7	76.8	77.0	75.8	75.2	76.1	77.2	76.4	77.1	77.0	77.5	77.0	75.6	74.5
230000	75.2	75.6	75.8	76.8	76.7	75.7	75.5	75.8	77.1	76.1	76.5	77.1	76.8	77.2	75.4	74.4
Daily Max	75.8	75.7	76.5	77.2	78.4	77.0	76.2	76.2	77.8	77.5	77.9	78.2	77.6	78.4	77.3	75.3
Daily Min	74.8	75.3	75.3	76.0	75.7	75.1	75.0	75.2	75.4	76.1	76.5	76.6	75.5	76.6	75.4	74.4
Average	75.2	75.5	75.8	76.7	76.9	76.1	75.6	75.8	76.5	76.7	77.0	77.2	76.9	77.4	76.6	74.9

Monthly average: 74.8
 License Maximum Monthly Average: 89 F

High Falls Temperature Monitoring - August 2010

Time HHMMSS	08/17/10	08/18/10	08/19/10	08/20/10	08/21/10	08/22/10	08/23/10	08/24/10	08/25/10	08/26/10	08/27/10	08/28/10	08/29/10	08/30/10	08/31/10
0	74.3	73.2	73.4	73.1	73.2	74.5	74.7	73.4	73.0	72.1	71.6	71.8	71.5	72.6	72.9
10000	74.1	73.1	73.4	73.1	73.2	74.3	74.6	73.4	72.9	72.1	71.5	71.7	71.5	72.7	73.0
20000	74.0	73.0	73.3	73.1	73.1	74.2	74.3	73.3	72.8	72.0	71.4	71.6	71.5	72.7	73.1
30000	73.9	73.0	73.2	73.2	73.1	74.0	74.2	73.2	72.7	71.9	71.3	71.5	71.4	72.8	73.3
40000	73.7	73.0	73.2	73.1	73.1	74.0	74.1	73.1	72.6	71.7	71.3	71.5	71.4	72.8	73.3
50000	73.6	73.0	73.2	73.1	73.1	73.8	74.0	73.1	72.5	71.6	71.2	71.4	71.3	72.9	73.4
60000	73.4	72.9	73.1	73.1	73.1	73.7	73.9	73.1	72.4	71.5	71.2	71.3	71.2	72.8	73.4
70000	73.4	72.9	73.0	73.1	73.1	73.7	73.9	73.1	72.3	71.5	71.2	71.3	71.1	73.0	73.4
80000	73.4	73.0	73.0	73.2	73.2	73.9	74.1	73.2	72.4	71.7	71.5	71.4	71.2	73.1	73.5
90000	73.6	73.1	72.9	73.3	73.2	74.2	74.4	73.3	72.5	71.9	71.8	71.6	71.7	73.2	73.4
100000	73.7	73.3	73.1	73.3	73.4	74.6	74.6	73.3	72.8	72.2	72.0	71.8	72.1	73.4	73.6
110000	73.9	73.5	73.3	73.4	73.6	75.1	74.7	73.3	72.8	72.5	72.2	72.0	72.5	73.6	73.2
120000	73.9	73.6	73.6	73.5	74.2	75.7	74.9	73.4	72.8	72.6	72.4	72.2	72.7	73.8	73.7
130000	74.0	73.8	73.9	73.5	74.6	75.8	75.1	73.4	72.7	72.5	72.5	72.4	72.9	73.9	73.6
140000	74.1	73.8	73.9	73.6	75.1	75.9	75.1	73.3	73.1	72.6	72.5	72.2	73.0	73.6	72.8
150000	74.1	73.6	73.6	73.8	75.3	75.8	74.7	73.3	73.1	72.6	72.5	72.1	72.9	73.2	72.8
160000	74.1	73.5	73.5	73.9	75.2	75.8	74.7	73.5	73.3	72.6	72.4	72.2	72.7	72.7	73.0
170000	74.0	73.7	73.4	73.8	75.3	75.9	74.4	73.6	73.3	72.3	72.3	71.9	72.5	72.6	73.0
180000	74.0	73.5	73.2	73.7	75.2	75.8	74.2	73.5	73.2	72.2	72.1	71.7	72.4	72.4	73.1
190000	73.9	73.5	73.1	73.6	75.0	75.6	73.9	73.3	72.9	72.0	71.9	71.6	72.2	72.2	73.0
200000	73.7	73.4	73.1	73.4	74.9	75.4	73.7	73.2	72.7	71.9	71.9	71.5	72.2	72.1	73.1
210000	73.6	73.4	73.0	73.4	74.8	75.2	73.7	73.2	72.5	71.9	72.1	71.5	72.3	72.1	73.1
220000	73.4	73.4	73.1	73.4	74.7	75.1	73.6	73.0	72.4	71.9	72.1	71.6	72.5	72.4	73.3
230000	73.3	73.4	73.1	73.3	74.6	74.9	73.5	73.0	72.4	71.8	71.9	71.5	72.6	72.6	73.4
Daily Max	74.3	73.8	73.9	73.9	75.3	75.9	75.1	73.6	73.3	72.6	72.5	72.4	73.0	73.9	73.7
Daily Min	73.3	72.9	72.9	73.1	73.1	73.7	73.5	73.0	72.3	71.5	71.2	71.3	71.1	72.1	72.8
Average	73.8	73.3	73.3	73.4	74.0	74.9	74.3	73.3	72.8	72.1	71.9	71.7	72.1	72.9	73.2

Monthly average: 74.8
 License Maximum Monthly Average: 89 F

High Falls Temperature Monitoring - September 2010

Time HHMMSS	09/01/10	09/02/10	09/03/10	09/04/10	09/05/10	09/06/10	09/07/10	09/08/10	09/09/10	09/10/10	09/11/10	09/12/10	09/13/10	09/14/10	09/15/10	09/16/10
0	73.6	74.0	73.0	70.5	68.2	68.7	68.6	66.8	65.6	66.2	65.2	64.8	64.7	64.9	64.7	63.6
10000	73.7	74.1	73.1	70.5	68.2	68.6	68.6	66.7	65.6	66.2	65.2	64.8	64.6	64.8	64.6	63.5
20000	73.8	74.1	73.0	70.3	68.1	68.6	68.5	66.5	65.4	66.1	65.2	64.7	64.5	64.7	64.6	63.4
30000	73.9	74.0	73.0	70.1	68.0	68.5	68.5	66.6	65.4	66.0	65.1	64.6	64.4	64.5	64.4	63.2
40000	73.8	74.0	72.8	69.6	68.1	68.5	68.5	66.3	65.4	65.8	65.2	64.6	64.3	64.8	64.1	63.1
50000	73.9	74.0	72.7	69.2	67.9	68.4	68.2	66.1	65.4	65.7	65.2	64.4	64.3	64.6	63.9	63.1
60000	73.9	74.0	72.4	69.3	67.8	68.3	68.1	66.0	65.3	65.5	65.2	64.5	64.2	64.5	63.8	63.2
70000	73.8	74.0	72.4	69.3	67.8	68.4	68.1	65.9	65.2	65.4	65.2	64.4	64.1	64.5	63.8	63.0
80000	73.8	74.1	72.3	69.3	68.1	68.5	67.9	66.0	65.2	65.5	65.2	64.5	64.1	64.5	63.9	62.9
90000	73.9	74.0	72.4	69.1	68.2	68.5	67.9	66.2	65.5	65.6	65.2	64.7	64.5	64.7	64.1	62.8
100000	74.0	74.0		69.2	68.5	68.8	67.8	66.4	65.8	65.8	65.2	64.9	64.7	64.7	64.2	62.8
110000	74.6	73.6	72.2	69.1	68.8	69.0	67.7	66.3	66.3	66.1	65.2	65.1	64.9	64.8	64.2	63.0
120000	75.0	73.8	72.1	69.3	68.9	69.0	67.7	66.5	66.7	66.2	65.2	65.2	65.1	64.9	64.1	63.2
130000	75.4	73.7	72.0	69.4	69.0	69.0	67.7	66.6	67.0	66.1	65.2	65.3	65.2	65.2	64.2	63.2
140000	75.4	73.7	72.1	69.5	69.3	69.1	67.8	66.5	67.0	66.0	65.2	65.2	65.4	65.2	64.2	63.3
150000	74.8	73.5	71.9	69.3	69.5	69.2	67.7	66.5	66.9	66.0	65.2	65.3	65.4	65.6	64.1	63.2
160000	74.7	73.8	71.9	69.3	69.2	68.9	67.7	66.6	67.0	65.8	65.3	65.3		65.7	64.1	63.4
170000	74.7	73.5	71.7	69.3	69.0	68.8	67.7	66.4	66.8	65.7	65.4	65.0	65.8	65.6	64.0	63.4
180000	74.8	73.4	71.6	69.0	68.9	68.7	67.6	66.4	67.0	65.5	65.4	65.0	65.7	65.5	64.0	63.3
190000	74.8	73.4	71.4	68.9	68.9	68.7	67.5	66.3	66.9	65.4	65.3	64.9	65.5	65.4	63.9	63.2
200000	74.7	73.6	71.3	68.8	68.8	68.7	67.2	66.3	66.6	65.2	65.2	65.0	65.4	65.2	63.9	63.2
210000	74.4	73.3	71.1	68.6	68.8	68.6	67.1	66.1	66.5	65.2	65.1	65.0	65.2	65.0	63.8	63.1
220000	74.1	73.2	71.0	68.5	68.8	68.6	66.9	65.9	66.3	65.2	65.0	64.9	65.2	64.9	63.8	63.1
230000	74.1	73.2	70.5	68.3	68.7	68.6	66.7	65.8	66.2	65.2	64.9	64.8	65.0	64.7	63.7	63.1
Daily Max	75.4	74.1	73.1	70.5	69.5	69.2	68.6	66.8	67.0	66.2	65.4	65.3	65.8	65.7	64.7	63.6
Daily Min	73.6	73.2	70.5	68.3	67.8	68.3	66.7	65.8	65.2	65.2	64.9	64.4	64.1	64.5	63.7	62.8
Average	74.3	73.8	72.1	69.3	68.6	68.7	67.8	66.3	66.1	65.7	65.2	64.9	64.9	65.0	64.1	63.2

Monthly average: 64.4
 License Maximum Monthly Average: 89 F

Data missing - equipment retrieval/replacement

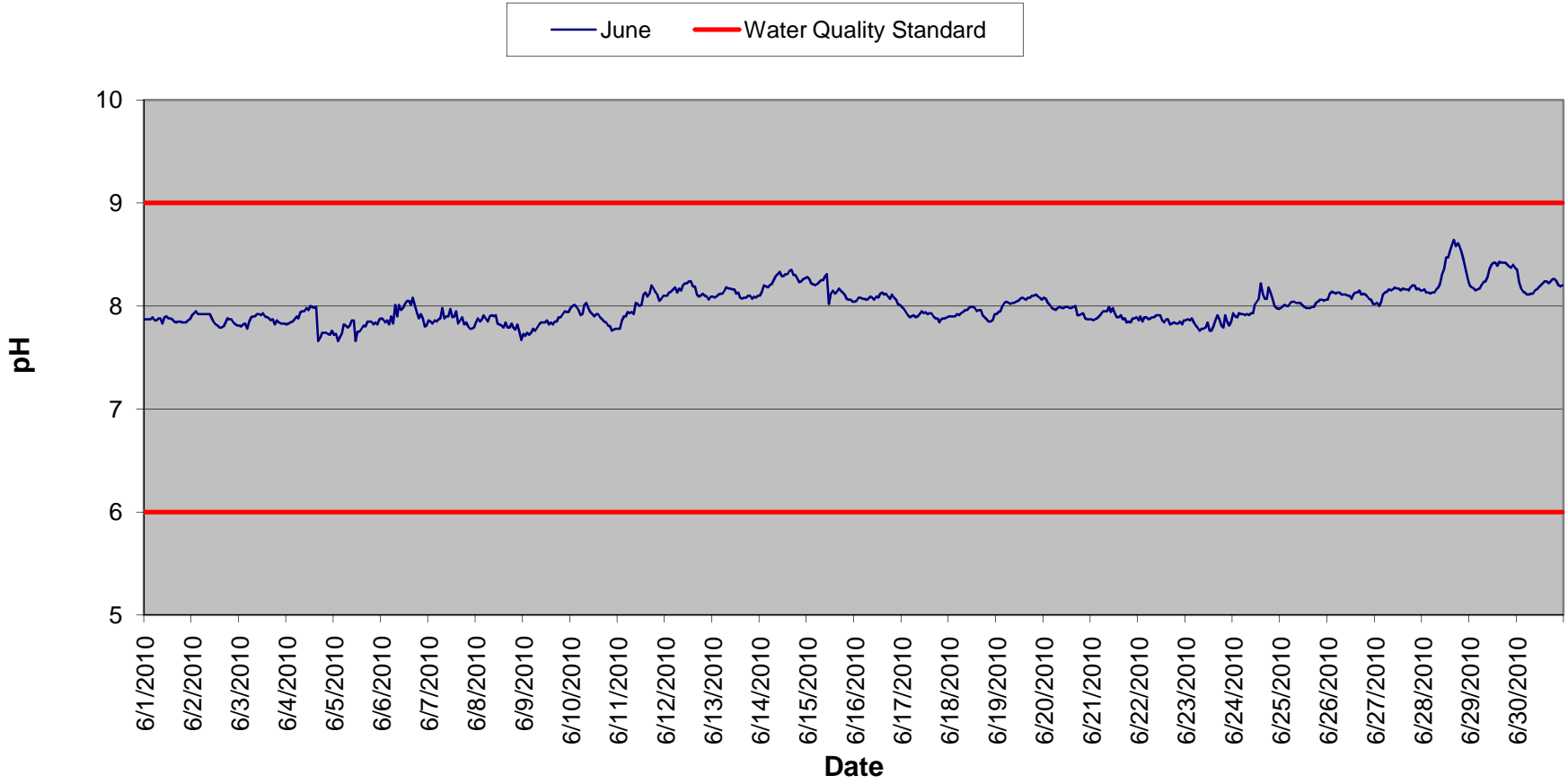
High Falls Temperature Monitoring - September 2010

Time HHMMSS	09/17/10	09/18/10	09/19/10	09/20/10	09/21/10	09/22/10	09/23/10	09/24/10	09/25/10	09/26/10	09/27/10	09/28/10	09/29/10	09/30/10
0	63.1	62.9	62.7	61.8	61.4	61.8	61.2	61.2	61.0	60.3	59.6	58.9	59.1	59.2
10000	63.0	62.9	62.7	61.7	61.4	61.8	61.2	61.1	61.0	60.3	59.6	58.9	59.1	59.1
20000	62.9	62.9	62.5	61.7	61.4	61.7	61.2	61.1	60.9	60.2	59.6	58.8	59.0	59.0
30000	62.9	62.9	62.4	61.6	61.4	61.7	61.2	61.3	60.8	60.1	59.5	58.8	59.0	58.9
40000	62.8	62.9	62.5	61.5	61.4	61.5	61.1	61.2	60.6	60.0	59.4	58.8	59.0	58.9
50000	62.9	62.8	62.3	61.4	61.4	61.4	61.1	61.3	60.5	60.0	59.4	58.8	58.9	58.9
60000	62.8	62.7	62.2	61.4	61.4	61.4	61.1	61.3	60.5	59.9	59.3	58.9	58.9	58.9
70000	62.8	62.7	62.2	61.3	61.4	61.3	61.2	61.3	60.3	59.8	59.2	58.9	58.9	58.8
80000	62.8	62.6	62.2	61.4	61.5	61.3	61.2	61.3	60.3	59.8	59.2	58.9	58.9	58.8
90000	62.8	62.4	62.2	61.5	61.5	61.4	61.2	61.3	60.2	59.8	59.2	59.0	58.9	58.8
100000	62.8	62.6	62.3	61.6	61.5	61.6	61.2	61.4	60.2	59.8	59.3	59.1	59.0	59.1
110000	63.0	62.6	62.3	61.6	61.5	61.7	61.2	61.5	60.4	59.9	59.2	59.1	58.9	59.3
120000	62.9	62.7	62.3	61.6	61.6	61.9	61.3	61.6	60.6	60.1	59.2	59.2	59.0	59.4
130000	62.8	63.0	62.3	61.5	61.8	62.0	61.4	61.7	60.8	60.3	59.2	59.2	59.0	59.6
140000	63.0	63.2	62.3	61.5	61.8	62.0	61.4	61.7	60.9	60.4	59.2	59.3	59.0	59.6
150000	63.0	63.3	62.4	61.4	61.8	61.9	61.5	61.7	61.1	60.2	59.2	59.3	58.9	59.8
160000	63.0	63.3	62.4	61.4	61.8	61.7	61.6	61.7	61.1	60.3	59.1	59.3	58.9	59.8
170000	63.0	63.4	62.4	61.4	61.8	61.5	61.6	61.7	61.0	60.1	59.1	59.3	58.7	59.7
180000	62.9	63.2	62.3	61.4	61.7	61.5	61.6	61.6	61.0	60.0	59.2	59.3	58.6	59.6
190000	62.9	63.1	62.0	61.4	61.9	61.3	61.6	61.6	60.8	60.0	59.1	59.2	59.2	59.6
200000	62.9	63.1	62.0	61.4	61.9	61.3	61.5	61.4	60.6	59.9	59.1	59.1	59.3	59.4
210000	62.9	63.1	61.9	61.4	61.8	61.3	61.4	61.2	60.6	59.9	59.0	59.1	59.4	59.4
220000	62.9	62.9	61.9	61.4	61.8	61.2	61.4	61.1	60.5	59.8	59.0	59.1	59.3	59.3
230000	62.9	62.8	61.8	61.4	61.8	61.2	61.3	61.1	60.4	59.7	58.9	59.1	59.2	59.3
Daily Max	63.1	63.4	62.7	61.8	61.9	62.0	61.6	61.7	61.1	60.4	59.6	59.3	59.4	59.8
Daily Min	62.8	62.4	61.8	61.3	61.4	61.2	61.1	61.1	60.2	59.7	58.9	58.8	58.6	58.8
Average	62.9	62.9	62.3	61.5	61.6	61.6	61.3	61.4	60.7	60.0	59.2	59.1	59.0	59.3

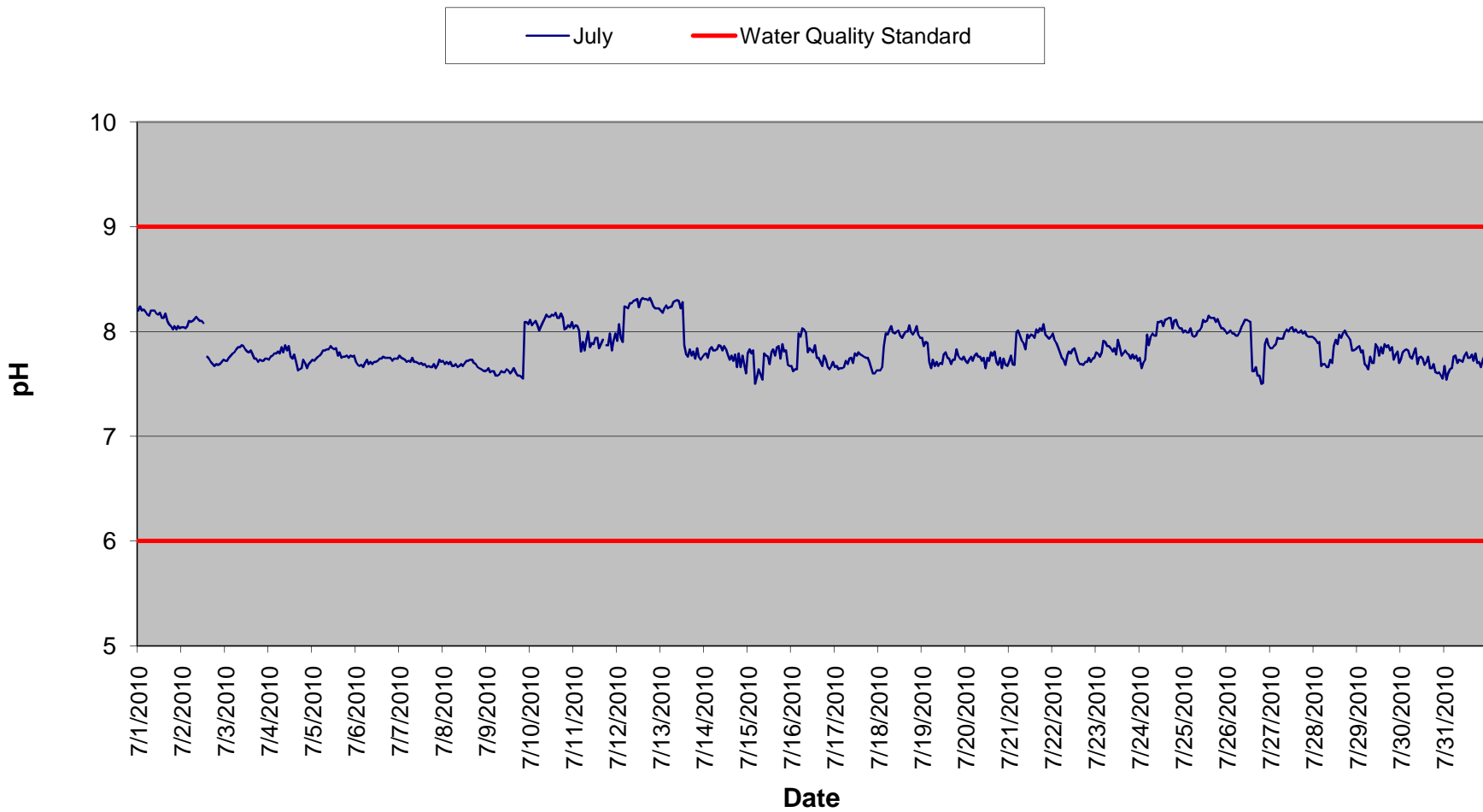
Monthly average: 64.4
 License Maximum Monthly Average: 89 F

Data missing - equipment retrieval/replacement

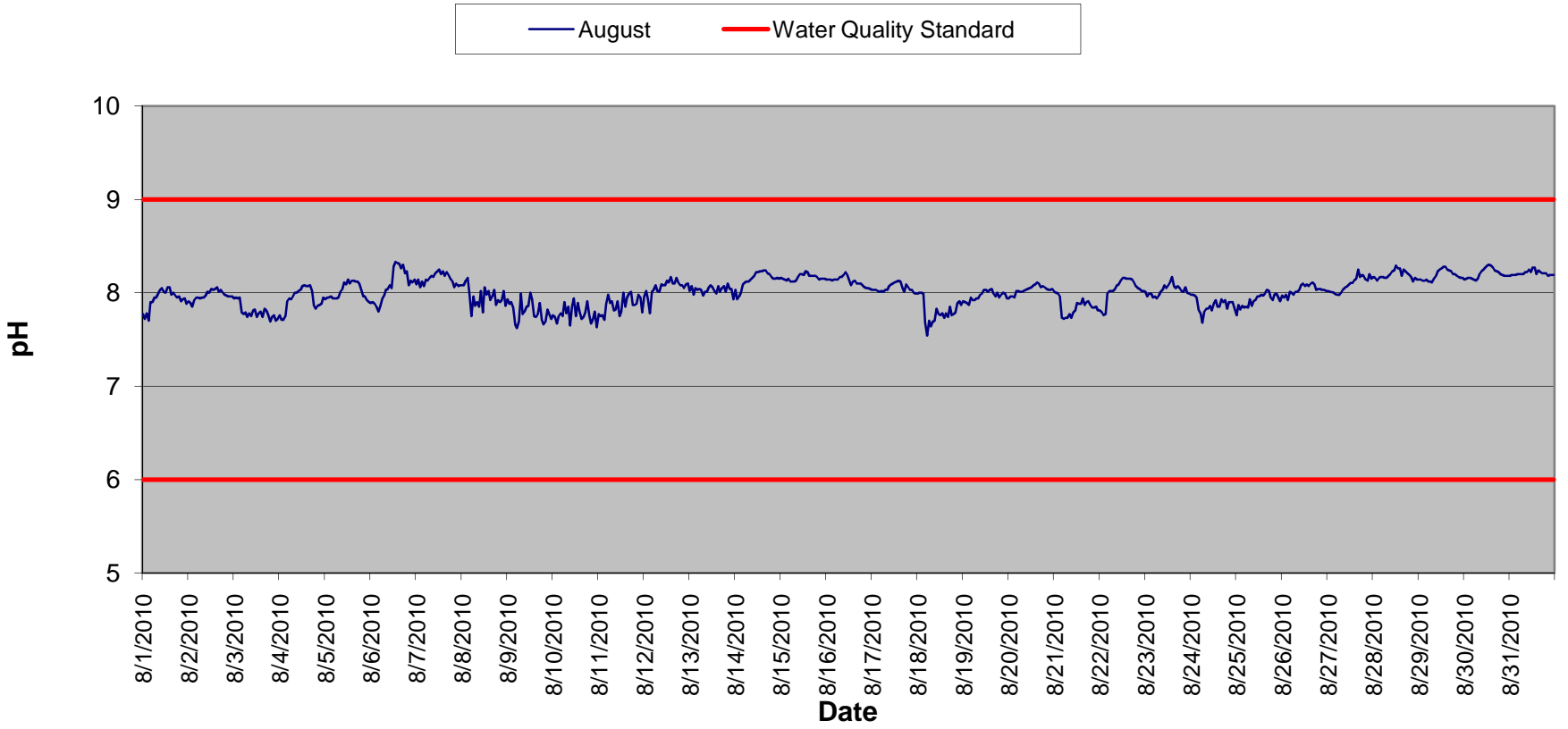
High Falls pH Monitoring - June 2010



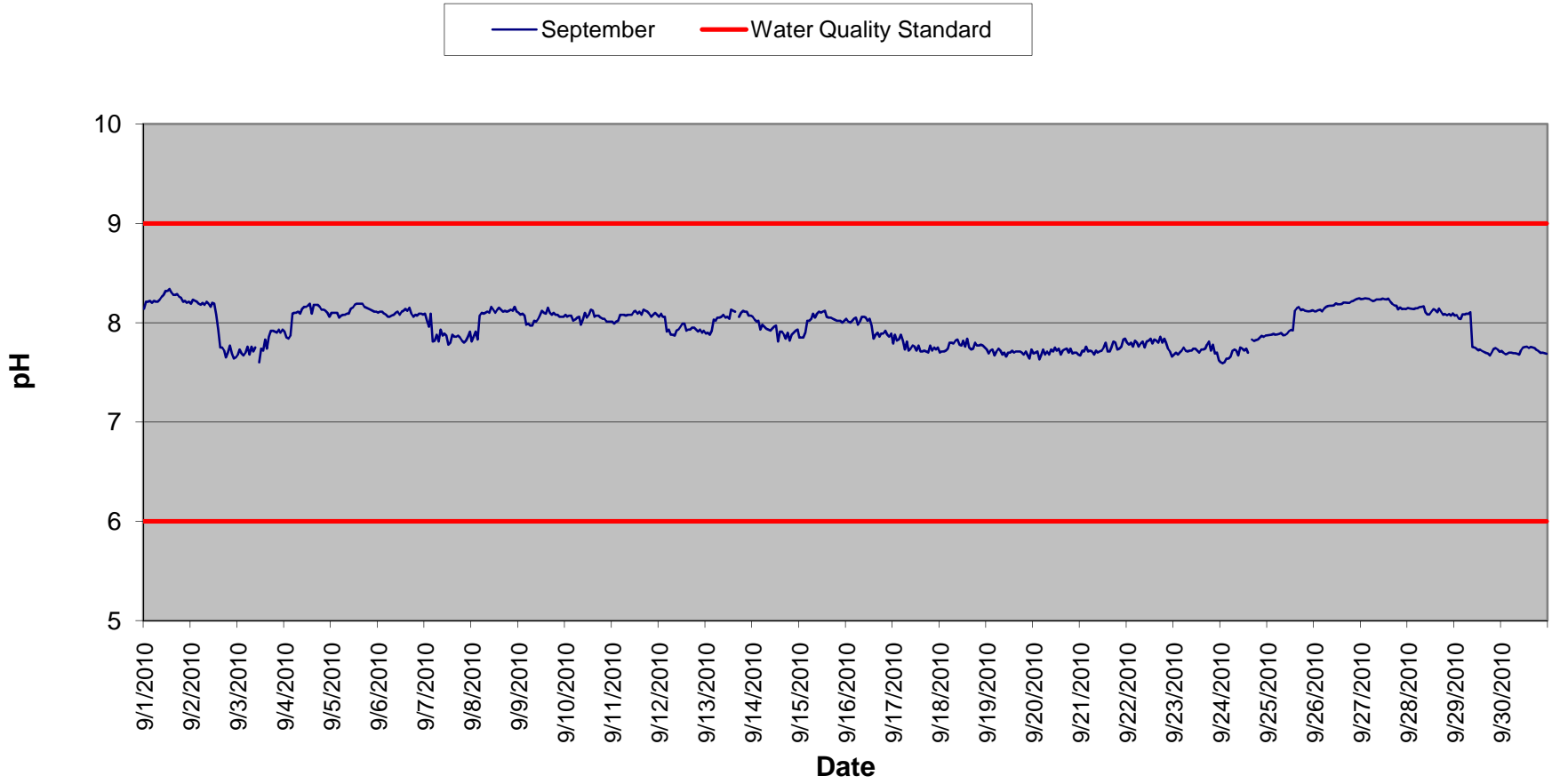
High Falls pH Monitoring - July 2010



High Falls pH Monitoring - August 2010



High Falls pH Monitoring - September 2010



High Falls pH Monitoring - June 2010

Time HHMMSS	06/01/10	06/02/10	06/03/10	06/04/10	06/05/10	06/06/10	06/07/10	06/08/10	06/09/10	06/10/10	06/11/10	06/12/10	06/13/10	06/14/10	06/15/10	06/16/10
0	7.9	7.9	7.8	7.8	7.7	7.9	7.9	7.8	7.7	8.0	7.8	8.1	8.1	8.1	8.3	8.0
10000	7.9	7.9	7.8	7.8	7.7	7.9	7.9	7.9	7.7	8.0	7.8	8.1	8.1	8.1	8.3	8.1
20000	7.9	8.0	7.8	7.8	7.7	7.8	7.8	7.9	7.7	8.0	7.9	8.1	8.1	8.2	8.2	8.1
30000	7.9	7.9	7.8	7.9	7.7	7.9	7.9	7.9	7.7	8.0	7.9	8.1	8.1	8.2	8.2	8.1
40000	7.9	7.9	7.8	7.9	7.7	7.8	7.9	7.9	7.7	8.0	7.9	8.2	8.1	8.2	8.2	8.1
50000	7.9	7.9	7.9	7.9	7.8	7.9	7.9	7.9	7.8	7.9	7.9	8.2	8.1	8.2	8.2	8.1
60000	7.9	7.9	7.9	7.9	7.8	7.8	7.9	7.9	7.8	7.9	7.9	8.1	8.2	8.2	8.2	8.1
70000	7.9	7.9	7.9	7.9	7.8	8.0	8.0	7.9	7.8	8.0	7.9	8.2	8.2	8.3	8.3	8.1
80000	7.9	7.9	7.9	8.0	7.8	7.9	7.9	7.9	7.8	8.0	7.9	8.2	8.2	8.3	8.3	8.1
90000	7.8	7.9	7.9	8.0	7.9	8.0	7.9	7.9	7.8	8.0	8.0	8.2	8.2	8.3	8.3	8.1
100000	7.9	7.9	7.9	8.0	7.9	8.0	7.9	7.9	7.8	7.9	8.0	8.2	8.2	8.3	8.3	8.1
110000	7.9	7.9	7.9	8.0	7.7	8.0	8.0	7.8	7.8	7.9	8.0	8.2	8.2	8.3	8.0	8.1
120000	7.9	7.8	7.9	8.0	7.8	8.0	7.9	7.8	7.9	7.9	8.0	8.2	8.1	8.3	8.1	8.1
130000	7.9	7.8	7.9	8.0	7.8	8.1	7.9	7.8	7.8	7.9	8.1	8.2	8.1	8.3	8.2	8.1
140000	7.9	7.8	7.9	8.0	7.8	8.1	8.0	7.8	7.8	7.9	8.1	8.2	8.1	8.3	8.1	8.1
150000	7.9	7.8	7.9	8.0	7.8	8.0	7.8	7.8	7.8	7.9	8.1	8.2	8.1	8.3	8.1	8.1
160000	7.8	7.8	7.9	7.7	7.8	8.1	7.9	7.8	7.9	7.9	8.1	8.1	8.1	8.4	8.2	8.1
170000	7.9	7.8	7.9	7.7	7.9	8.0	7.9	7.8	7.9	7.9	8.2	8.1	8.1	8.3	8.2	8.1
180000	7.9	7.9	7.8	7.7	7.9	7.9	7.8	7.8	7.9	7.8	8.2	8.1	8.1	8.3	8.1	8.1
190000	7.8	7.9	7.9	7.7	7.9	7.9	7.8	7.8	7.9	7.8	8.1	8.1	8.1	8.3	8.1	8.1
200000	7.8	7.9	7.8	7.7	7.8	7.9	7.8	7.8	7.9	7.8	8.1	8.1	8.1	8.2	8.1	8.1
210000	7.8	7.8	7.8	7.7	7.8	7.9	7.8	7.8	8.0	7.8	8.1	8.1	8.1	8.2	8.1	8.1
220000	7.9	7.8	7.8	7.7	7.8	7.8	7.8	7.8	7.9	7.8	8.1	8.1	8.1	8.3	8.1	8.0
230000	7.9	7.8	7.8	7.8	7.9	7.8	7.8	7.7	7.9	7.8	8.1	8.1	8.1	8.3	8.0	8.0
Daily Max	7.9	8.0	7.9	8.0	7.9	8.1	8.0	7.9	8.0	8.0	8.2	8.2	8.2	8.4	8.3	8.1
Daily Min	7.8	7.8	7.8	7.7	7.7	7.8	7.8	7.7	7.7	7.8	7.8	8.1	8.1	8.1	8.0	8.0
Average	7.9	7.9	7.9	7.9	7.8	7.9	7.9	7.8	7.8	7.9	8.0	8.1	8.1	8.3	8.2	8.1

License Limits: 6.0 to 9.0 s.u.

High Falls pH Monitoring - June 2010

Time HHMMSS	06/17/10	06/18/10	06/19/10	06/20/10	06/21/10	06/22/10	06/23/10	06/24/10	06/25/10	06/26/10	06/27/10	06/28/10	06/29/10	06/30/10
0	8.0	7.9	7.9	8.1	7.9	7.9	7.9	7.9	8.0	8.1	8.0	8.2	8.2	8.4
10000	8.0	7.9	7.9	8.1	7.9	7.9	7.9	7.9	8.0	8.1	8.0	8.2	8.2	8.2
20000	7.9	7.9	8.0	8.0	7.9	7.9	7.9	7.9	8.0	8.1	8.0	8.1	8.2	8.2
30000	7.9	7.9	8.0	8.0	7.9	7.9	7.9	7.9	8.0	8.1	8.0	8.1	8.2	8.1
40000	7.9	7.9	8.0	8.0	7.9	7.9	7.8	7.9	8.0	8.1	8.1	8.1	8.2	8.1
50000	7.9	7.9	8.0	8.0	7.9	7.9	7.8	7.9	8.0	8.1	8.1	8.1	8.2	8.1
60000	7.9	7.9	8.0	8.0	8.0	7.9	7.8	7.9	8.0	8.1	8.1	8.1	8.2	8.1
70000	7.9	7.9	8.0	8.0	8.0	7.9	7.8	7.9	8.0	8.1	8.2	8.2	8.2	8.1
80000	7.9	8.0	8.0	8.0	8.0	7.9	7.8	7.9	8.0	8.1	8.2	8.2	8.2	8.1
90000	7.9	8.0	8.0	8.0	8.0	7.9	7.8	7.9	8.0	8.1	8.2	8.2	8.3	8.2
100000	8.0	8.0	8.0	8.0	7.9	7.9	7.8	7.9	8.0	8.1	8.2	8.3	8.4	8.2
110000	7.9	8.0	8.1	8.0	8.0	7.9	7.8	8.0	8.0	8.1	8.2	8.4	8.4	8.2
120000	7.9	8.0	8.1	8.0	7.9	7.9	7.8	8.0	8.0	8.1	8.2	8.5	8.4	8.2
130000	7.9	8.0	8.1	8.0	7.9	7.8	7.8	8.1	8.0	8.1	8.2	8.5	8.4	8.2
140000	7.9	8.0	8.1	8.0	7.9	7.9	7.8	8.2	8.0	8.1	8.2	8.5	8.4	8.2
150000	7.9	8.0	8.1	8.0	7.9	7.9	7.9	8.1	8.0	8.1	8.2	8.6	8.4	8.2
160000	7.9	8.0	8.1	8.0	7.9	7.8	7.9	8.1	8.0	8.2	8.2	8.6	8.4	8.2
170000	7.9	7.9	8.1	7.9	7.9	7.8	7.9	8.1	8.0	8.1	8.2	8.6	8.4	8.2
180000	7.9	7.9	8.1	7.9	7.8	7.8	7.8	8.2	8.0	8.1	8.2	8.6	8.4	8.3
190000	7.8	7.9	8.1	7.9	7.9	7.8	7.8	8.1	8.0	8.1	8.2	8.6	8.4	8.3
200000	7.9	7.9	8.1	7.9	7.8	7.8	7.9	8.1	8.1	8.1	8.2	8.5	8.4	8.2
210000	7.9	7.9	8.1	7.9	7.9	7.9	7.9	8.0	8.1	8.1	8.2	8.4	8.4	8.2
220000	7.9	7.9	8.1	7.9	7.9	7.8	7.8	8.0	8.1	8.1	8.2	8.4	8.4	8.2
230000	7.9	7.9	8.1	7.9	7.9	7.9	7.9	8.0	8.1	8.0	8.2	8.3	8.4	8.2
Daily Max	8.0	8.0	8.1	8.1	8.0	7.9	7.9	8.2	8.1	8.2	8.2	8.6	8.4	8.4
Daily Min	7.8	7.9	7.9	7.9	7.8	7.8	7.8	7.9	8.0	8.0	8.0	8.1	8.2	8.1
Average	7.9	7.9	8.0	8.0	7.9	7.9	7.8	8.0	8.0	8.1	8.1	8.3	8.3	8.2

License Limits: 6.0 to 9.0 s.u.

High Falls pH Monitoring - July 2010

Time HHMMSS	07/01/10	07/02/10	07/03/10	07/04/10	07/05/10	07/06/10	07/07/10	07/08/10	07/09/10	07/10/10	07/11/10	07/12/10	07/13/10	07/14/10	07/15/10	07/16/10
0	8.2	8.0	7.7	7.7	7.7	7.7	7.8	7.7	7.6	8.1	8.0	7.9	8.2	7.8	7.8	7.7
10000	8.2	8.0	7.7	7.8	7.7	7.7	7.8	7.7	7.7	8.1	8.1	8.1	8.2	7.8	7.8	7.6
20000	8.2	8.0	7.8	7.8	7.7	7.7	7.7	7.7	7.6	8.1	8.1	7.9	8.2	7.8	7.8	7.6
30000	8.2	8.1	7.8	7.8	7.8	7.7	7.7	7.7	7.6	8.1	8.0	7.9	8.3	7.8	7.8	7.6
40000	8.2	8.1	7.8	7.8	7.8	7.7	7.7	7.7	7.6	8.1	7.8	8.2	8.2	7.9	7.5	8.0
50000	8.2	8.1	7.8	7.8	7.8	7.7	7.7	7.7	7.6	8.0	7.9	8.2	8.2	7.8	7.6	8.0
60000	8.2	8.1	7.8	7.8	7.8	7.7	7.7	7.7	7.6	8.1	7.8	8.2	8.2	7.8	7.6	8.0
70000	8.2	8.1	7.9	7.9	7.8	7.7	7.8	7.7	7.6	8.1	7.9	8.3	8.3	7.8	7.6	8.0
80000	8.2	8.1	7.9	7.8	7.8	7.7	7.7	7.7	7.6	8.1	8.0	8.3	8.3	7.9	7.5	8.0
90000	8.2	8.1	7.9	7.9	7.8	7.7	7.7	7.7	7.6	8.2	7.9	8.3	8.3	7.9	7.8	7.8
100000	8.2	8.1	7.9	7.8	7.9	7.7	7.7	7.7	7.6	8.1	7.9	8.3	8.3	7.8	7.8	7.8
110000	8.2	8.1	7.8	7.9	7.8	7.7	7.7	7.7	7.6	8.1	7.9	8.3	8.2	7.9	7.8	7.8
120000	8.2	8.1	7.8	7.8	7.8	7.7	7.7	7.7	7.6	8.2	7.9	8.2	8.3	7.8	7.7	7.8
130000	8.1	0.0	7.8	7.7	7.8	7.7	7.7	7.7	7.6	8.2	7.9	8.3	7.9	7.8	7.8	7.9
140000	8.1	7.8	7.8	7.8	7.8	7.7	7.7	7.7	7.6	8.2	7.8	8.3	7.8	7.7	7.8	7.8
150000	8.2	7.7	7.8	7.7	7.8	7.8	7.7	7.7	7.7	8.1	7.9	8.3	7.8	7.8	7.8	7.8
160000	8.1	7.7	7.7	7.6	7.8	7.8	7.7	7.7	7.6	8.1	7.9	8.3	7.8	7.7	7.9	7.7
170000	8.1	7.7	7.7	7.6	7.8	7.8	7.7	7.7	7.6	8.2	0.0	8.3	7.8	7.8	7.9	7.7
180000	8.1	7.7	7.7	7.7	7.8	7.8	7.7	7.7	7.6	8.1	7.9	8.3	7.8	7.7	7.7	7.8
190000	8.0	7.7	7.7	7.7	7.8	7.8	7.7	7.7	7.6	8.0	7.9	8.3	7.7	7.8	7.9	7.7
200000	8.1	7.7	7.7	7.7	7.8	7.7	7.7	7.7	7.6	8.0	8.0	8.2	7.8	7.7	7.8	7.7
210000	8.0	7.7	7.7	7.7	7.8	7.7	7.7	7.6	8.1	8.1	7.8	8.2	7.8	7.8	7.8	7.6
220000	8.1	7.7	7.7	7.7	7.8	7.7	7.7	7.6	8.1	8.0	7.9	8.2	7.7	7.7	7.7	7.7
230000	8.0	7.7	7.7	7.7	7.8	7.7	7.7	7.6	8.1	8.1	8.0	8.2	7.8	7.6	7.7	7.7
Daily Max	8.2	8.1	7.9	7.9	7.9	7.8	7.8	7.7	8.1	8.2	8.1	8.3	8.3	7.9	7.9	8.0
Daily Min	8.0	0.0	7.7	7.6	7.7	7.7	7.7	7.6	7.6	8.0	0.0	7.9	7.7	7.6	7.5	7.6
Average	8.1	7.6	7.8	7.8	7.8	7.7	7.7	7.7	7.7	8.1	7.6	8.2	8.0	7.8	7.7	7.8

License Limits: 6.0 to 9.0 s.u.

 Data missing - equipment retrieval/replacement

High Falls pH Monitoring - July 2010

Time HHMMSS	07/17/10	07/18/10	07/19/10	07/20/10	07/21/10	07/22/10	07/23/10	07/24/10	07/25/10	07/26/10	07/27/10	07/28/10	07/29/10	07/30/10	07/31/10
0	7.7	7.6	7.9	7.7	7.7	8.0	7.8	7.8	8.0	8.0	7.8	7.9	7.9	7.7	7.7
10000	7.7	7.6	7.9	7.7	7.8	7.9	7.8	7.7	8.0	8.0	7.8	7.9	7.9	7.8	7.5
20000	7.6	7.7	7.9	7.7	7.7	7.9	7.8	7.7	8.0	8.0	7.9	7.9	7.8	7.8	7.6
30000	7.7	7.9	7.9	7.8	7.7	7.9	7.8	7.7	8.0	8.0	7.9	7.9	7.8	7.8	7.6
40000	7.7	8.0	7.7	7.7	8.0	7.8	7.9	8.0	8.0	8.0	7.9	7.7	7.7	7.8	7.7
50000	7.7	8.0	7.7	7.8	8.0	7.8	7.9	7.9	8.0	8.0	7.9	7.7	7.7	7.8	7.8
60000	7.7	8.0	7.7	7.8	8.0	7.7	7.9	8.0	8.0	8.0	7.9	7.7	7.6	7.7	7.8
70000	7.7	8.1	7.7	7.8	7.9	7.7	7.9	8.0	8.0	8.0	7.9	7.7	7.8	7.8	7.7
80000	7.7	8.0	7.7	7.8	7.9	7.8	7.8	8.0	8.0	8.0	8.0	7.7	7.7	7.8	7.7
90000	7.8	8.0	7.7	7.7	7.8	7.8	7.8	8.0	8.0	8.1	8.0	7.7	7.7	7.7	7.7
100000	7.7	8.0	7.7	7.8	8.0	7.8	7.8	8.1	8.0	8.1	8.0	7.7	7.9	7.8	7.7
110000	7.8	8.0	7.7	7.7	7.9	7.8	7.8	8.1	8.1	8.1	8.0	7.9	7.9	7.8	7.8
120000	7.8	8.0	7.8	7.8	8.0	7.8	7.9	8.1	8.1	8.1	8.0	7.9	7.8	7.7	7.8
130000	7.8	7.9	7.8	7.7	8.0	7.8	7.9	8.1	8.1	8.1	8.0	7.9	7.9	7.7	7.8
140000		8.0	7.8	7.8	7.9	7.7	7.8	8.1	8.2	7.6	8.0	8.0	7.8	7.7	7.8
150000	7.8	8.0	7.7	7.8	8.0	7.7	7.8	8.1	8.1	7.6	8.0	7.9	7.9	7.8	7.8
160000	7.8	8.0	7.7	7.8	8.0	7.7	7.8	8.1	8.1	7.7	8.0	8.0	7.9	7.7	7.7
170000	7.8	8.1	7.7	7.7	8.0	7.7	7.8	8.1	8.1	7.6	8.0	8.0	7.9	7.7	7.8
180000	7.8	8.0	7.7	7.7	8.0	7.7	7.8	8.0	8.1	7.6	8.0	8.0	7.8	7.7	7.7
190000	7.7	8.0	7.8	7.8	8.1	7.7	7.7	8.1	8.1	7.5	8.0	8.0	7.9	7.6	7.7
200000	7.7	8.0	7.8	7.7	8.0	7.8	7.8	8.1	8.1	7.5	8.0	7.9	7.7	7.6	7.7
210000	7.6	8.1	7.7	7.7	8.0	7.7	7.7	8.1	8.0	7.9	8.0	7.8	7.8	7.6	7.7
220000	7.6	8.0	7.7	7.7	7.9	7.7	7.8	8.0	8.0	7.9	8.0	7.8	7.8	7.6	7.8
230000	7.6	7.9	7.8	7.7	8.0	7.8	7.7	8.0	8.0	7.9	8.0	7.8	7.7	7.6	7.7
Daily Max	7.8	8.1	7.9	7.8	8.1	8.0	7.9	8.1	8.2	8.1	8.0	8.0	7.9	7.8	7.8
Daily Min	7.6	7.6	7.7	7.7	7.7	7.7	7.7	7.7	8.0	7.5	7.8	7.7	7.6	7.6	7.5
Average	7.7	7.9	7.8	7.7	7.9	7.8	7.8	8.0	8.0	7.9	8.0	7.8	7.8	7.7	7.7

License Limits: 6.0 to 9.0 s.u.

Data missing - equipment retrieval/replacement

High Falls pH Monitoring - August 2010

HHMMSS	08/01/10	08/02/10	08/03/10	08/04/10	08/05/10	08/06/10	08/07/10	08/08/10	08/09/10	08/10/10	08/11/10	08/12/10	08/13/10	08/14/10	08/15/10	08/16/10
0	7.8	7.9	7.9	7.8	7.9	7.9	8.1	8.1	7.9	7.8	7.8	8.0	8.0	8.0	8.2	8.1
10000	7.7	7.9	8.0	7.7	8.0	7.9	8.1	8.1	7.9	7.7	7.8	8.0	8.1	7.9	8.2	8.1
20000	7.8	7.9	7.9	7.7	8.0	7.9	8.1	8.1	7.9	7.7	7.8	7.9	8.0	8.0	8.1	8.1
30000	7.7	7.9	8.0	7.8	8.0	7.9	8.1	8.2	7.8	7.8	7.7	7.8	8.1	8.0	8.1	8.1
40000	7.9	8.0	7.8	7.9	7.9	7.8	8.1	8.0	7.7	7.8	7.9	8.0	8.0	8.1	8.2	8.1
50000	7.9	8.0	7.8	7.9	7.9	7.9	8.1	7.8	7.6	7.8	8.0	8.0	8.0	8.1	8.1	8.1
60000	8.0	7.9	7.8	7.9	7.9	7.9	8.1	8.0	7.7	7.9	7.9	8.1	8.0	8.1	8.1	8.1
70000	8.0	8.0	7.7	8.0	8.0	8.0	8.2	7.9	8.0	7.8	7.9	8.0	8.0	8.1	8.1	8.2
80000	8.0	8.0	7.8	8.0	8.0	8.0	8.2	7.9	7.8	7.9	7.8	8.0	8.0	8.1	8.1	8.2
90000	8.0	8.0	7.8	8.0	8.0	8.0	8.2	7.9	7.8	7.7	7.8	8.1	8.0	8.2	8.2	8.2
100000	8.1	8.0	7.8	8.0	8.1	8.1	8.2	8.0	7.9	7.9	7.9	8.1	8.1	8.2	8.2	8.2
110000	8.0	8.0	7.8	8.0	8.1	8.1	8.2	7.8	7.9	7.9	7.8	8.1	8.1	8.2	8.2	8.2
120000	8.0	8.0	7.7	8.1	8.1	8.3	8.3	8.1	8.0	7.8	7.8	8.1	8.1	8.2	8.2	8.1
130000	8.1	8.0	7.8	8.1	8.1	8.3	8.2	8.0	7.9	7.9	8.0	8.1	8.0	8.2	8.2	8.1
140000	8.1	8.0	7.8	8.1	8.1	8.3	8.2	8.0	7.8	7.8	7.9	8.2	8.0	8.2	8.2	8.1
150000	8.0	8.1	7.7	8.1	8.1	8.3	8.2	7.9	7.7	7.7	8.0	8.1	8.1	8.2	8.2	8.1
160000	8.0	8.0	7.8	8.1	8.1	8.3	8.2	8.0	7.8	7.7	8.0	8.1	8.0	8.2	8.2	8.1
170000	8.0	8.0	7.8	8.0	8.1	8.3	8.2	8.0	7.9	7.8	8.0	8.2	8.1	8.2	8.2	8.1
180000	8.0	8.0	7.8	7.9	8.1	8.2	8.2	7.9	7.7	7.9	7.9	8.1	8.1	8.2	8.2	8.1
190000	8.0	8.0	7.7	7.8	8.0	8.2	8.1	7.9	7.7	7.8	7.9	8.1	8.0	8.2	8.2	8.1
200000	7.9	8.0	7.7	7.9	8.0	8.1	8.1	7.9	7.7	7.7	7.9	8.1	8.1	8.2	8.1	8.1
210000	7.9	8.0	7.8	7.9	8.0	8.1	8.1	7.9	7.8	7.7	8.0	8.1	8.0	8.2	8.2	8.1
220000	7.9	8.0	7.7	7.9	7.9	8.1	8.1	8.0	7.8	7.8	8.0	8.1	8.0	8.2	8.2	8.1
230000	7.9	8.0	7.7	8.0	7.9	8.1	8.1	7.9	7.7	7.6	7.8	8.1	7.9	8.2	8.2	8.0
Daily Max	8.1	8.1	8.0	8.1	8.1	8.3	8.3	8.2	8.0	7.9	8.0	8.2	8.1	8.2	8.2	8.2
Daily Min	7.7	7.9	7.7	7.7	7.9	7.8	8.1	7.8	7.6	7.6	7.7	7.8	7.9	7.9	8.1	8.0
Average	7.9	8.0	7.8	7.9	8.0	8.1	8.1	8.0	7.8	7.8	7.9	8.1	8.0	8.1	8.2	8.1

License Limits: 6.0 to 9.0 s.u.

High Falls pH Monitoring - August 2010

HHMMSS	08/17/10	08/18/10	08/19/10	08/20/10	08/21/10	08/22/10	08/23/10	08/24/10	08/25/10	08/26/10	08/27/10	08/28/10	08/29/10	08/30/10	08/31/10
0	8.0	8.0	7.9	7.9	8.0	7.8	8.0	8.0	7.8	8.0	8.0	8.2	8.1	8.1	8.2
10000	8.0	8.0	7.9	8.0	8.0	7.8	8.0	8.0	7.9	8.0	8.0	8.2	8.1	8.2	8.2
20000	8.0	8.0	7.9	8.0	8.0	7.8	8.0	8.0	7.8	8.0	8.0	8.1	8.1	8.2	8.2
30000	8.0	8.0	7.9	8.0	8.0	7.8	8.0	8.0	7.9	7.9	8.0	8.2	8.1	8.2	8.2
40000	8.0	7.7	8.0	8.0	7.7	8.0	8.0	7.8	7.8	8.0	8.0	8.2	8.1	8.2	8.2
50000	8.0	7.5	7.9	8.0	7.7	8.0	8.0	7.8	7.9	8.0	8.0	8.2	8.1	8.1	8.2
60000	8.0	7.7	7.9	8.0	7.7	8.0	7.9	7.7	7.8	8.0	8.0	8.2	8.1	8.1	8.2
70000	8.0	7.6	7.9	8.0	7.7	8.0	8.0	7.8	7.9	8.0	8.0	8.2	8.1	8.2	8.2
80000	8.0	7.7	7.9	8.0	7.8	8.0	8.0	7.8	7.9	8.0	8.0	8.2	8.2	8.2	8.2
90000	8.1	7.7	8.0	8.0	7.7	8.1	8.0	7.8	7.9	8.0	8.1	8.2	8.2	8.2	8.2
100000	8.1	7.8	8.0	8.0	7.8	8.1	8.1	7.9	7.9	8.1	8.1	8.2	8.2	8.3	8.3
110000	8.1	7.8	8.0	8.1	7.8	8.1	8.1	7.8	8.0	8.1	8.1	8.2	8.3	8.3	8.2
120000	8.1	7.8	8.0	8.1	7.9	8.2	8.1	7.9	8.0	8.1	8.1	8.3	8.3	8.3	8.3
130000	8.1	7.8	8.0	8.1	7.9	8.2	8.1	7.9	8.0	8.1	8.1	8.3	8.3	8.3	8.3
140000	8.1	7.7	8.0	8.1	7.9	8.2	8.2	7.9	8.0	8.1	8.1	8.3	8.3	8.3	8.2
150000	8.1	7.8	8.0	8.1	7.9	8.2	8.1	7.9	8.0	8.1	8.2	8.2	8.3	8.3	8.2
160000	8.1	7.7	8.0	8.1	7.9	8.2	8.1	7.9	8.0	8.1	8.3	8.3	8.2	8.2	8.2
170000	8.0	7.9	8.0	8.1	7.9	8.1	8.1	7.9	8.0	8.1	8.2	8.2	8.2	8.2	8.2
180000	8.1	7.8	8.0	8.1	7.9	8.1	8.1	7.9	8.0	8.0	8.2	8.2	8.2	8.2	8.2
190000	8.1	7.8	8.0	8.1	7.9	8.1	8.0	7.8	7.9	8.0	8.2	8.2	8.2	8.2	8.2
200000	8.0	7.8	8.0	8.0	7.8	8.1	8.0	7.9	8.0	8.0	8.1	8.2	8.2	8.2	8.2
210000	8.0	7.9	8.0	8.0	7.8	8.0	8.1	7.9	8.0	8.0	8.1	8.1	8.2	8.2	8.2
220000	8.0	7.9	8.0	8.0	7.9	8.0	8.0	7.9	8.0	8.0	8.2	8.2	8.2	8.2	8.2
230000	8.0	7.9	7.9	8.0	7.8	8.0	8.0	7.8	7.9	8.0	8.2	8.1	8.2	8.2	8.2
Daily Max	8.1	8.0	8.0	8.1	8.0	8.2	8.2	8.0	8.0	8.1	8.3	8.3	8.3	8.3	8.3
Daily Min	8.0	7.5	7.9	7.9	7.7	7.8	7.9	7.7	7.8	7.9	8.0	8.1	8.1	8.1	8.2
Average	8.1	7.8	8.0	8.0	7.9	8.0	8.0	7.9	7.9	8.0	8.1	8.2	8.2	8.2	8.2

License Limits: 6.0 to 9.0 s.u.

High Falls pH Monitoring - September 2010

Time HHMMSS	09/01/10	09/02/10	09/03/10	09/04/10	09/05/10	09/06/10	09/07/10	09/08/10	09/09/10	09/10/10	09/11/10	09/12/10	09/13/10	09/14/10	09/15/10	09/16/10
0	8.1	8.2	7.7	7.9	8.1	8.1	8.1	7.8	8.1	8.1	8.0	8.1	7.9	8.1	7.9	8.0
10000	8.2	8.2	7.7	7.9	8.1	8.1	8.0	7.9	8.1	8.1	8.0	8.1	7.9	8.0	7.9	8.0
20000	8.2	8.2	7.7	7.8	8.1	8.1	8.0	7.9	8.1	8.1	8.0	8.1	7.9	8.0	7.9	8.0
30000	8.2	8.2	7.7	7.9	8.1	8.1	8.1	7.8	8.1	8.1	8.0	8.1	7.9	8.0	7.9	8.0
40000	8.2	8.2	7.7	8.1	8.1	8.1	7.8	8.1	8.0	8.0	8.1	7.9	8.0	7.9	8.0	8.0
50000	8.2	8.2	7.8	8.1	8.1	8.1	7.8	8.1	8.0	8.0	8.1	7.9	8.0	8.0	8.0	8.1
60000	8.2	8.2	7.7	8.1	8.1	8.1	7.9	8.1	8.0	8.1	8.1	7.9	8.1	8.0	8.0	8.0
70000	8.2	8.2	7.8	8.1	8.1	8.1	7.8	8.1	8.0	8.1	8.1	7.9	8.1	7.9	8.1	8.0
80000	8.2	8.2	7.7	8.1	8.1	8.1	7.9	8.1	8.0	8.0	8.1	7.9	8.1	7.9	8.1	8.1
90000	8.3	8.2	7.8	8.1	8.1	8.1	7.9	8.1	8.0	8.0	8.1	7.9	8.1	7.9	8.1	8.1
100000	8.3	8.2		8.2	8.1	8.1	7.9	8.2	8.0	8.1	8.1	7.9	8.1	7.9	8.1	8.1
110000	8.3	8.2	7.6	8.2	8.2	8.1	7.9	8.1	8.1	8.1	8.1	8.0	8.1	8.0	8.1	8.0
120000	8.3	8.2	7.7	8.2	8.2	8.1	7.8	8.1	8.1	8.1	8.1	8.0	8.0	8.0	8.1	8.0
130000	8.3	8.1	7.7	8.2	8.2	8.1	7.8	8.1	8.1	8.1	8.1	8.0	8.1	7.8	8.1	8.0
140000	8.3	7.9	7.8	8.1	8.2	8.1	7.9	8.2	8.1	8.1	8.1	7.9	8.1	7.9	8.1	7.8
150000	8.3	7.8	7.7	8.2	8.2	8.1	7.9	8.1	8.2	8.1	8.1	7.9	8.1	7.9	8.1	7.9
160000	8.3	7.8	7.9	8.2	8.2	8.2	7.9	8.1	8.1	8.1	8.1	7.9		7.9	8.1	7.9
170000	8.3	7.7	7.9	8.2	8.2	8.1	7.9	8.1	8.1	8.1	8.1	8.0	8.1	7.8	8.0	7.9
180000	8.3	7.7	7.9	8.2	8.2	8.1	7.9	8.1	8.1	8.1	8.1	8.0	8.1	7.9	8.0	7.9
190000	8.3	7.7	7.9	8.1	8.1	8.1	7.8	8.1	8.1	8.0	8.1	7.9	8.1	7.8	8.0	7.9
200000	8.2	7.8	7.9	8.1	8.1	8.1	7.8	8.1	8.1	8.0	8.1	7.9	8.1	7.9	8.0	7.9
210000	8.2	7.7	7.9	8.1	8.1	8.1	7.8	8.1	8.1	8.0	8.1	7.9	8.1	7.9	8.0	7.9
220000	8.2	7.6	7.9	8.1	8.1	8.1	7.9	8.2	8.1	8.0	8.1	7.9	8.1	7.9	8.0	7.9
230000	8.2	7.7	7.9	8.1	8.1	8.1	7.9	8.1	8.1	8.0	8.1	7.9	8.1	7.9	8.0	7.9
Daily Max	8.3	8.2	7.9	8.2	8.2	8.2	8.1	8.2	8.2	8.1	8.1	8.1	8.1	8.1	8.1	8.1
Daily Min	8.1	7.6	7.6	7.8	8.1	8.1	7.8	7.8	8.0	8.0	8.0	7.9	7.9	7.8	7.9	7.8
Average	8.2	8.0	7.8	8.1	8.1	8.1	7.9	8.1	8.1	8.1	8.1	8.0	8.0	7.9	8.0	8.0

License Limits: 6.0 to 9.0 s.u.

Missing data due to equipment maintenance

High Falls pH Monitoring - September 2010

Time HHMMSS	09/17/10	09/18/10	09/19/10	09/20/10	09/21/10	09/22/10	09/23/10	09/24/10	09/25/10	09/26/10	09/27/10	09/28/10	09/29/10	09/30/10
0	7.8	7.7	7.7	7.7	7.7	7.8	7.7	7.6	7.9	8.1	8.2	8.1	8.1	7.7
10000	7.9	7.7	7.7	7.7	7.7	7.8	7.7	7.6	7.9	8.1	8.2	8.1	8.1	7.7
20000	7.8	7.7	7.7	7.7	7.7	7.8	7.7	7.6	7.9	8.1	8.2	8.1	8.0	7.7
30000	7.8	7.7	7.7	7.6	7.8	7.8	7.7	7.6	7.9	8.1	8.2	8.1	8.0	7.7
40000	7.9	7.7	7.7	7.7	7.7	7.8	7.7	7.6	7.9	8.1	8.2	8.1	8.1	7.7
50000	7.8	7.8	7.7	7.7	7.7	7.8	7.8	7.7	7.9	8.1	8.2	8.1	8.1	7.7
60000	7.7	7.8	7.7	7.7	7.7	7.8	7.7	7.7	7.9	8.2	8.2	8.2	8.1	7.7
70000	7.8	7.8	7.7	7.7	7.7	7.8	7.7	7.7	7.9	8.2	8.2	8.2	8.1	7.7
80000	7.7	7.8	7.7	7.7	7.7	7.8	7.7	7.7	7.9	8.2	8.2	8.2	8.1	7.7
90000	7.7	7.8	7.7	7.7	7.7	7.8	7.7	7.7	7.9	8.2	8.2	8.1	7.8	7.7
100000	7.8	7.8	7.7	7.7	7.7	7.8	7.7	7.8	7.9	8.2	8.2	8.1	7.7	7.7
110000	7.8	7.8	7.7	7.8	7.7	7.8	7.7	7.7	7.9	8.2	8.2	8.1	7.7	7.8
120000	7.7	7.8	7.7	7.7	7.8	7.8	7.7	7.7	7.9	8.2	8.2	8.1	7.7	7.8
130000	7.8	7.8	7.7	7.7	7.8	7.8	7.7	7.7	7.9	8.2	8.2	8.1	7.7	7.8
140000	7.7	7.8	7.7	7.7	7.7	7.8	7.7	7.7	8.1	8.2	8.2	8.1	7.7	7.7
150000	7.7	7.8	7.7	7.7	7.7	7.8	7.7	7.7	8.1	8.2	8.2	8.1	7.7	7.8
160000	7.7	7.7	7.7	7.7	7.8	7.8	7.7	7.8	8.2	8.2	8.2	8.1	7.7	7.7
170000	7.7	7.7	7.7	7.7	7.8	7.9	7.8	7.8	8.1	8.2	8.2	8.1	7.7	7.7
180000	7.7	7.8	7.7	7.7	7.8	7.8	7.8	7.8	8.1	8.2	8.2	8.1	7.7	7.7
190000	7.8	7.8	7.7	7.7	7.7	7.8	7.7	7.8	8.1	8.2	8.1	8.1	7.7	7.7
200000	7.7	7.8	7.7	7.7	7.7	7.8	7.8	7.9	8.1	8.2	8.2	8.1	7.7	7.7
210000	7.8	7.8	7.7	7.7	7.8	7.7	7.7	7.9	8.1	8.2	8.1	8.1	7.7	7.7
220000	7.7	7.8	7.6	7.7	7.8	7.7	7.7	7.9	8.1	8.2	8.1	8.1	7.7	7.7
230000	7.8	7.8	7.7	7.7	7.8	7.7	7.6	7.9	8.1	8.2	8.1	8.1	7.7	7.7
Daily Max	7.9	7.8	7.7	7.8	7.8	7.9	7.8	7.9	8.2	8.2	8.2	8.2	8.1	7.8
Daily Min	7.7	7.7	7.6	7.6	7.7	7.7	7.6	7.6	7.9	8.1	8.1	8.1	7.7	7.7
Average	7.8	7.8	7.7	7.7	7.7	7.8	7.7	7.7	8.0	8.2	8.2	8.1	7.9	7.7

License Limits: 6.0 to 9.0 s.u.

High Falls Hydroelectric Project

FERC No. 2858

2010 Water Quality Monitoring Report

Appendix B

Documentation of Agency Consultation

Metcalfe, Mark W

From: Metcalf, Mark W
Sent: Tuesday, July 13, 2010 8:22 AM
To: 'Donofrio, Michael C'; 'Utrup, Nick'
Cc: Crocker, Bruce E; Brandt, Edward S; Puzen, Shawn C
Subject: Water Quality Monitoring - High Falls
Attachments: High Falls DO July 2010.pdf

Good morning,

Pursuant to the water quality monitoring plan for the High Falls Hydroelectric Project, Wisconsin Public Service Corporation is monitoring dissolved oxygen, temperature, and pH in the Peshtigo River downstream of the powerhouse from June 1st through September 30th. On Sunday, July 11th, WPSC experienced a failure of the dissolved oxygen sensor which resulted in data being lost from 12:00 through 16:00. Attached for your information is a copy of the dissolved oxygen monitoring data collected in July up until the dissolved oxygen monitor was replaced on July 11th. Temperature and pH data was not affected by the equipment failure and is available during this time period.

At the time of the sensor failure, WPSC was releasing water through the tainter gates to provide additional aeration flow to the river. Prior to the D.O. sensor failure, oxygen concentrations in the Peshtigo River were approximately 7.0 mg/l (the License minimum concentration is 5.0 mg/l). Therefore, it is not likely that deviations from water quality standards occurred during the period of equipment malfunction.

If you have any questions about the monitoring data or this notice, please feel free to contact me.

Thanks,
Mark

Mark Metcalf
Environmental Consultant - Air & Water
Integrus Business Support, LLC.
(920) 433-1833

Providing support for Integrus Energy Group, Integrus Energy Services, Michigan Gas Utilities, Minnesota Energy Resources, North Shore Gas, Peoples Gas, Upper Peninsula Power, Wisconsin Public Service, and Wisconsin River Power Company

This email and any of its attachments may contain proprietary information, which is privileged, confidential, or subject to copyright belonging to Integrus Energy Group, Inc. This e-mail is intended solely for the use of the individual or entity to which it is addressed. If you are not the intended recipient of this e-mail, you are hereby notified that any dissemination, distribution, copying, or action taken in relation to the contents of and attachments to this e-mail is strictly prohibited and may be unlawful. If you have received this e-mail in error, please notify the sender immediately and permanently delete the original and any copy of this e-mail and any attachment. Thank You.

Metcalfe, Mark W

From: Metcalf, Mark W
Sent: Friday, July 16, 2010 12:39 PM
To: 'Donofrio, Michael C'; 'Utrup, Nick'
Cc: Puzen, Shawn C; Crocker, Bruce E; Brandt, Edward S
Subject: High Falls water quality monitoring

Good afternoon Mike and Nick,

Pursuant to Article 402 of the FERC license for the High Falls Hydroelectric project, the High Falls project will maintain re-regulation operation from approximately July 1 to April 14 to coincide with the end of run of river operation, so that at any point in time, instantaneous outflow, as measured immediately downstream of the tailrace, approximates the mean daily inflow to the Caldron Falls impoundment. Mean daily inflow to the Caldron Falls project for purposes of reregulation will be the daily average outflows from the Caldron Falls Project from the previous day. The mean daily inflows will be adjusted once daily by an algorithm that includes a re-regulation factor and if necessary a head centering adjustment to assure a return to a constant target elevation (mid-point) and to provide the required re-regulation outflows from the High Falls project.

Between 03:00 and 04:00 on July 15th, the facility increased the volume of water released from the High Falls Reservoir to from 230 CFS to approximately 560 CFS in order to approximate the previous day's outflows from Caldron Falls as part of the re-regulation process. During the course of increasing outflows, dissolved oxygen levels dropped below the License minimum concentration of 5.0 mg/l to approximately 4.3 mg/l at 04:00. The increase in flow rate may have influenced the dissolved oxygen reading. At the time the low DO readings were observed, approximately 60 CFS of aeration flow was being released through the tainter gate. Operators were dispatched upon observation of the low DO readings and aeration flow was increased to approximately 100 CFS. Dissolved oxygen levels returned to levels above the water quality standard by 04:30. WPS is investigating if less rapid flow changes can be made in these types of situations in the future. It is hoped that a less rapid flow change may not influence the dissolved oxygen level as much in this type of situation.

If you have any questions, feel free to contact me.

Thanks,
Mark

Mark Metcalf
Environmental Consultant - Air & Water
Integrays Business Support, LLC.
(920) 433-1833

Providing support for Integrays Energy Group, Integrays Energy Services, Michigan Gas Utilities, Minnesota Energy Resources, North Shore Gas, Peoples Gas, Upper Peninsula Power, Wisconsin Public Service, and Wisconsin River Power Company

This email and any of its attachments may contain proprietary information, which is privileged, confidential, or subject to copyright belonging to Integrays Energy Group, Inc. This e-mail is intended solely for the use of the individual or entity to which it is addressed. If you are not the intended recipient of this e-mail, you are hereby notified that any dissemination, distribution, copying, or action taken in relation to the contents of and attachments to this e-mail is strictly prohibited and may be unlawful. If you have received this e-mail in error, please notify the sender immediately and permanently delete the original and any copy of this e-mail and any attachment. Thank You.

Metcalfe, Mark W

From: Metcalfe, Mark W
Sent: Monday, July 26, 2010 4:26 PM
To: 'Donofrio, Michael C'; 'Utrup, Nick'
Cc: Egtvedt, Gregory W; Puzen, Shawn C; Crocker, Bruce E; Brandt, Edward S
Subject: High Falls dissolved oxygen monitoring

Good afternoon Mike and Nick,

Earlier this afternoon, WPSC observed a brief excursion from the dissolved oxygen water quality standard at the High Falls Hydroelectric Project. At approximately 1:30 pm, operators reduced the amount of aeration flow being released from the tainter gate from approximately 100 cfs to approximately 50 cfs. After this reduction, dissolved oxygen concentrations briefly dropped below the License minimum concentration of 5.0 mg/l to approximately 4.8 mg/l. Upon observing the drop in dissolved oxygen, aeration flow was increased to approximately 70 cfs, and dissolved oxygen levels increased to over 5 mg/l. The total duration of low dissolved oxygen level was 10 minutes.

If you have any questions, please feel free to contact me.

Thanks,
Mark

Mark Metcalfe
Environmental Consultant - Air & Water
Integritys Business Support, LLC.
(920) 433-1833

Providing support for Integritys Energy Group, Integritys Energy Services, Michigan Gas Utilities, Minnesota Energy Resources, North Shore Gas, Peoples Gas, Upper Peninsula Power, Wisconsin Public Service, and Wisconsin River Power Company

This email and any of its attachments may contain proprietary information, which is privileged, confidential, or subject to copyright belonging to Integritys Energy Group, Inc. This e-mail is intended solely for the use of the individual or entity to which it is addressed. If you are not the intended recipient of this e-mail, you are hereby notified that any dissemination, distribution, copying, or action taken in relation to the contents of and attachments to this e-mail is strictly prohibited and may be unlawful. If you have received this e-mail in error, please notify the sender immediately and permanently delete the original and any copy of this e-mail and any attachment. Thank You.



Wisconsin Public Service Corporation
(a subsidiary of WPS Resources Corporation)
700 North Adams Street
P.O. Box 19001
Green Bay, WI 54307-9001

October 18, 2010

FERC Project No. 2595

Mr. Michael Donofrio
Wisconsin Department of Natural Resources
101 N Ogden Rd
Peshtigo, WI 54157

Mr. Nicholas Utrup
U.S. Fish & Wildlife Service
Wisconsin Ecological Services Office
2661 Scott Tower Drive
New Franken, WI 54229

Dear Mr. Donofrio and Mr. Utrup:

Re: 2010 Water Quality Monitoring Results for the High Falls Hydroelectric Project

As per the Water Quality Monitoring Plan for the High Falls Hydroelectric Project, Wisconsin Public Service Corporation (WPS) is pleased to submit water quality monitoring data from the 2010 monitoring season for your review and comment. Per the water quality-monitoring plans for the High Falls Hydroelectric Project, dissolved oxygen (D.O.), temperature, and pH were monitored in the tailrace of the High Falls Hydroelectric facility, at the Boat Landing No. 3 Bridge over the Peshtigo River during the months of June through September each year. The water quality standards downstream of the High Falls Hydroelectric Facility are as follows:

Dissolved Oxygen Concentration: 5.0 mg/l
Maximum Monthly Average Temperature: 89°F
pH: >6.0 standard units, < 9.0 standards units

Water quality monitoring was conducted using Hydrolab Datasonde[®] monitoring equipment. Per the manufacturer, the monitoring equipment has a D.O. accuracy of +/- 0.2 mg/l. All monitoring data collected was adjusted for a loss of calibration if a post deployment calibration of the equipment showed calibration drift of 0.2 mg/l or greater. For compliance purposes, any dissolved oxygen readings below 4.80 mg/l is an exceedance of the Project License limit.

The only potential water quality deviation to note occurred on July 15th while the facility was conducting re-regulation. Pursuant to Article 402 of the FERC license for the High Falls Hydroelectric project, the High Falls project will maintain re-regulation operation from approximately July 1 to April 14 to coincide with the end of run of river operation, so that at any point in time, instantaneous outflow, as measured immediately downstream of the tailrace, approximates the mean daily inflow to the Caldron Falls impoundment. Mean daily inflow to the Caldron Falls project for purposes of reregulation will be the daily average outflows from the Caldron Falls Project from the previous day. The mean daily inflows will be adjusted once daily by an algorithm that includes a re-regulation factor

October 18, 2010
Mr. Donofrio & Mr. Utrup
Page 2 of 2

and if necessary a head centering adjustment to assure a return to a constant target elevation (mid-point) and to provide the required re-regulation outflows from the High Falls project.

Between 03:00 and 04:00 on July 15th, the facility increased the volume of water released from the High Falls Reservoir to from 230 CFS to approximately 560 CFS in order to approximate the previous day's outflows from Caldron Falls as part of the re-regulation process. During the course of increasing outflows, D.O. levels dropped below the License minimum concentration of 5.0 mg/l to approximately 4.3 mg/l at 04:00. The increase in flow rate may have influenced the D.O. reading. At the time the low D.O. readings were observed, approximately 60 CFS of aeration flow was being released through the tainter gate. Operators were dispatched upon observation of the low DO readings and aeration flow was increased to approximately 100 CFS. Dissolved oxygen levels returned to levels above the water quality standard by 04:30.

There are no other potential deviations from the D.O., temperature or pH standards to report. Attached for your review is water quality monitoring data collected between June 1 and September 30, 2010. Please review the attached data and provide any comments you may have as soon as possible, but within 30 days of this letter. Should you have any questions or concerns, please do not hesitate to call me at (920) 433-1833.

Thank you for your time and consideration.

Sincerely,

A handwritten signature in black ink that reads "Mark Metcalf". The signature is written in a cursive, slightly slanted style.

Mark W. Metcalf
Environmental Consultant – Air & Water
Telephone: (920) 433-1833

Attach.

cc: Mr. Shawn Puzen, IBS – D2
Mr. Bruce Crocker, WPS – D2
Mr. Ed Brandt, WPS - WM
Mr. William Bosacki, WPS - CRI

Response to Comments from the Wisconsin Department of Natural Resources:

The Wisconsin Department of Natural Resources did not respond with comments on the 2010 water quality monitoring report.

Response to Comments from the U.S. Fish and Wildlife Service:

The U. S. Fish and Wildlife Service did not respond with comments on the 2010 water quality monitoring report.

Document Content(s)

20110104 FERC High Falls WQM Report.PDF.....1-47