



North American Hydro Holdings, Inc. — Plant Operations:
116 State Street, P.O. Box 187, Neeshkoro, WI 54980 USA
Tel 920-293-4628 Fax 920-293-8087 Email nah@nahydro.com Web www.nahydro.com

Engineering & Manufacturing:
1323 B Everest Avenue, Schofield, WI 54478 USA
Tel 715-359-0209 Fax 715-359-1049 Email echofield@nahydro.com Web www.nahydro.com

April 27, 2006

FILED IN THE
OFFICE OF THE
SECRETARY
2006 MAY -3 P 11: 26
FEDERAL ENERGY
REGULATORY COMMISSION

ORIGINAL

The Secretary
Federal Energy Regulatory Commission
888 First Street, NE
Washington, DC 20426

**Re: Flambeau Lower, Project No. 2421, Flambeau Hydro LLC
Article 410, Purple Loosestrife Inventory**

Dear Secretary:

Please find enclosed an original and 8 copies of the Flambeau Lower, Project No. 2421 Purple Loosestrife Inventory for 2005. Copies of the inventory have been sent to the Wisconsin Department of Natural Resources (WIDNR) and the US Fish & Wildlife Service (USFWS).

If you have any questions regarding this submission, please contact Mr. Richard Loeffler at 920-293-4628 ext. 18.

Sincerely,
NORTH AMERICAN HYDRO, INC.

FOR Charles Alsberg
Executive Vice President

Cc: FERC – CRO
Encl.: 1 original & 8 copies

05-09-30 RAL FLLW 2005 loosestrife survey to FERC.doc

**Flambeau Lower Project Purple Loosestrife Inventory
September 1, 2005
FERC Project #2421 Article 410**

**Flambeau Hydro, L.L.C.
116 State St.
Neshkoro, WI 54960**

Purple Loosestrife

On September 1, 2005, Flambeau Hydro, L.L.C. (FHLLC) performed an inventory of purple loosestrife plants at the Flambeau Lower Project in Price County, Wisconsin. The method of inventory as approved and modified by Federal Energy Regulatory Commission (FERC) Order of June 18, 2003 was defined as follows:

While Purple Loosestrife is blooming in mid July to early August, the inventory should be conducted using a boat to survey the impoundment above the dam within the Project Boundary and on foot or by boat below the dam within the Project Boundary. County wetland maps may be used to determine other areas where Purple Loosestrife could be found on lands owned by FHLLC within the Project Boundary. Lands owned by FHLLC within the Project Boundary will be surveyed on foot. A pair of binoculars should be used to search for the purple flowered spikes of the plant. When plants are located, the person(s) inventorying should get close enough to make a positive identification without disturbing the plants or the immediate area around the plants as this could cause them to spread. A GPS receiver will be used to establish a GPS coordinate for the location of the plants. If it is not possible to get close enough to establish an accurate location, an approximate location will be established with reference to an established GPS coordinate. The plants should be inventoried by marking and numbering the location on a Project map along with notes approximating size of plants, stand area, percent cover, stem density, plant density, and location with reference to established GPS coordinates. Photos and/or videotape will be taken of the largest occurrences.

Example:

#1 6' tall plants; 4' X 20'; 30% cover; 4 – 5 stems per plant; 4 plants; on shoreline N45° 56.183' W90° 26.748'; no photo

#2 5' - 7' tall plants; 10' X 10'; 25% cover; 4 – 5 stems per plant; 10 plants; in marsh ~50 feet bearing 25° from N45° 56.256' W90° 26.710'; photo No. 1

The area to be inventoried shall be the shoreline of the impoundment to elevation 1468 feet NGVD and lands owned by FHLLC within the Project

Boundary as indicated on the Project Map 1, dated November 1991, included in Exhibit G of Flambeau Paper Corp. Application For A Subsequent License for the Lower Hydroelectric Project FERC Project #2421.

General Observations:

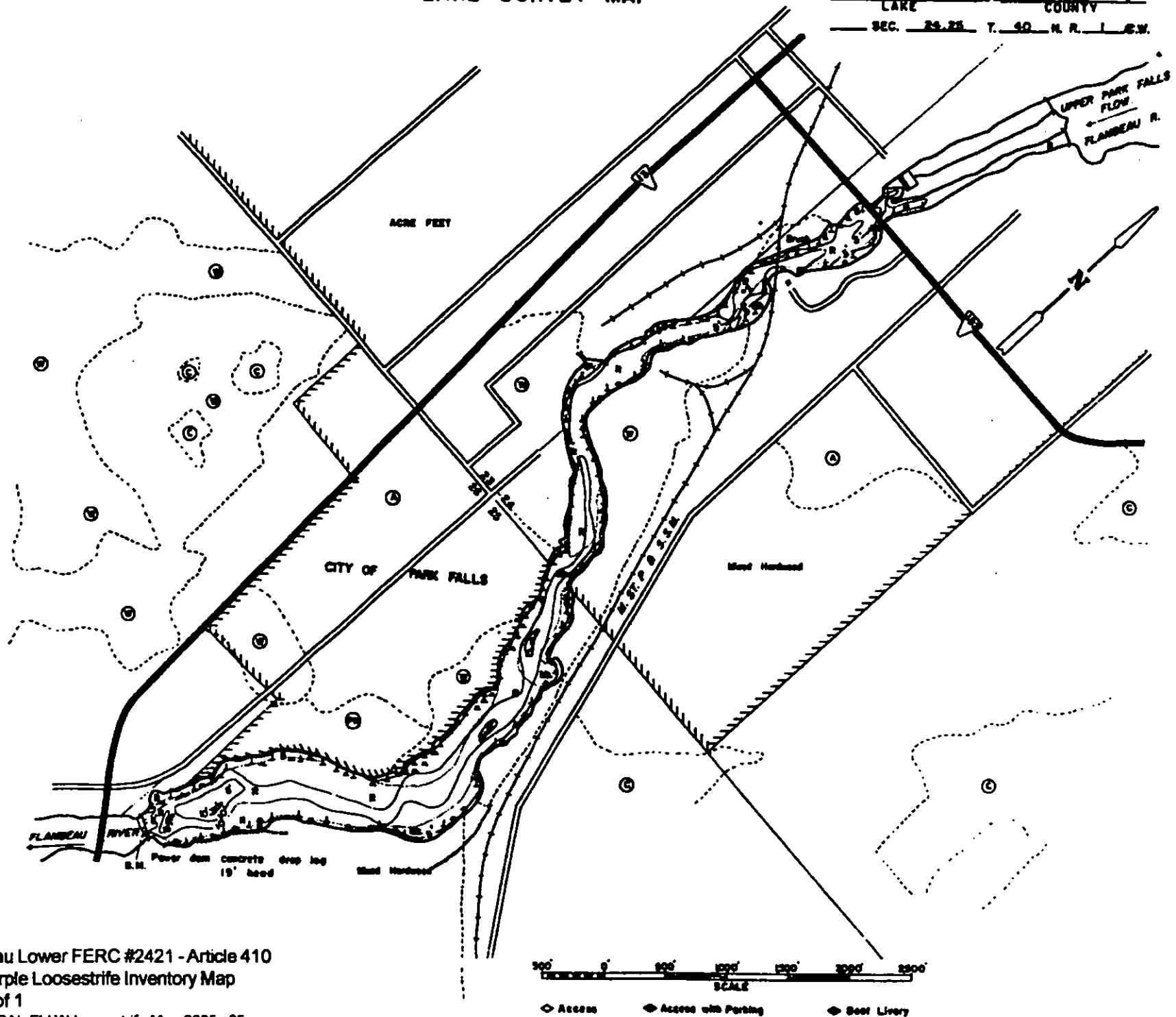
The Flambeau Lower Project Boundary was divided into three different areas; *the impoundment* (from HWY 182 bridge in Park Falls to the dam), *FHLLC owned property within the project boundary* (FHLLC owned property adjacent to the dam and powerhouse), and *the tailrace* (from the dam and powerhouse to the HWY 13 bridge).

The tailrace was surveyed by boat and no purple loosestrife plants were observed.

The FHLLC owned property within the project boundary was surveyed on foot and no purple loosestrife plants were observed.

The impoundment was surveyed by boat and no purple loosestrife plants were observed.

During the inventory, a digital camera was used to document new occurrences of purple loosestrife as noted in the survey comments at the end of this report.





North American Hydro Holdings, Inc. — Plant Operations:
118 State Street, P.O. Box 167, Neeshkoro, WI 54980 USA
Tel 920-293-4628 Fax 920-293-8067 Email nah@nahydro.com Web www.nahydro.com

Engineering & Manufacturing:
1323 B Everest Avenue, Schofield, WI 54476 USA
Tel 715-358-0208 Fax 715-358-1048 Email schofield@nahydro.com Web www.nahydro.com

April 27, 2006

Mr. Jeffrey Scheirer
Northern Region FERC Manager
Wisconsin Department of Natural Resources
875 South 4th Avenue
Park Falls, WI 54552

Ms. Louise Clemency
Field Supervisor
U.S. Fish and Wildlife Service
2661 Scott Tower Drive
New Franken, WI 54229

**Re: *Flambeau Lower Project, No. 2421, Flambeau Hydro, L.L.C.
Article 410, Purple Loosetrife Inventory***

Dear Mr. Scheirer and Ms. Clemency:

Attached is a copy of our "Purple Loosetrife Inventory" for 2005. This annual report has been prepared to comply with Article 410 of the project's federal hydropower license and is being filed with the Federal Energy Regulatory Commission.

Please contact me at 920-293-4628 extension 18 if you wish to discuss or have any questions.

Sincerely,
NORTH AMERICAN HYDRO, Inc.

Richard Loeffler

Attachment