



FILED  
SECRETARY OF THE  
COMMISSION

2010 FEB 16 A 10:52

FEDERAL ENERGY  
REGULATORY COMMISSION

Domtar  
Nekoosa Mill  
301 Point Basse Avenue  
Nekoosa, WI 54457-1422  
Tel: (715) 886 7111

ORIGINAL

Ms. Louise Clemency  
U.S. Fish & Wildlife Service  
Green Bay Field Office  
2661 Scott Tower Drive  
New Franken, WI 54229

September 8, 2009

Mr. Scott Watson  
Wisconsin Department of Natural Resources  
5301 Rib Mountain Drive  
Wausau, WI 54401

Dear Ms. Clemency and Mr. Watson:

Subject: Domtar Wisconsin Dam Corp. *NO*  
FERC Projects 2255, 2291 and 2292 *009*  
Centralia, Port Edwards, and Nekoosa Projects *007*  
Purple Loosestrife Monitoring Report for 2009

Attached is a report for purple loosestrife monitoring as required by Article 408 for projects 2255 and 2291, and by Article 407 for project 2292. A single report for the three projects has been prepared.

The survey was performed substantially as described in the plan submitted to the FERC Secretary on January 13, 1997, and as approved by FERC on July 16, 1997. The 2009 survey was performed during July and August as described in the report.

If there are any questions, please feel free to contact me at (715) 886-7111.

Sincerely,

David S. Ulrich, Superintendent  
Environmental Services

DSU:kd

cc: Ms. Peggy A. Harding, Regional Engineer, Federal Energy Regulatory Commission,  
Chicago Regional Office, 230 South Dearborn Street, Chicago, IL 60604

Secretary, Federal Energy Regulatory Commission, 888 First Street, N.E.,  
Washington, D.C. 20426

## PURPLE LOOSESTRIFE MONITORING SURVEY FOR 2009

**DOMTAR WISCONSIN DAM CORP.  
100 Wisconsin River Drive  
Port Edwards, Wisconsin 54469**

**By**

**Dan Cummins  
Cummins Environmental, LLC**

**FERC Projects  
Centralia Dam – No. 2252  
Port Edwards Dam – No. 2291  
Nekoosa Dam – No. 2292**

### BACKGROUND

During July and August 2009, Cummins Environmental, LLC, conducted the annual purple loosestrife survey of project lands. Utilizing past survey maps and maps of the area, the survey was conducted for the presence of purple loosestrife plants. Observations were made along the Wisconsin River throughout Domtar's FERC permitted property.

Surveys have been conducted annually since 1997. As part of this report, a comparison will be made to the presence of purple loosestrife in 2009 to that seen in 2008.

### DESCRIPTION OF THE PURPLE LOOSESTRIFE POPULATIONS IN 2009

**GA** Upstream of the Centralia Dam into the City of Wisconsin Rapids (Figure 1a) there are many locations of single and double plants slightly increasing the numbers and locations of plants from 2008. This was especially true along the right bank and on the islands. ~~At the Centralia Dam~~ At the Centralia Dam (Figure 1b), purple loosestrife numbers have stayed about the same as 2008. The purple loosestrife population is scattered at the dam and immediately upstream. The many islands continue to be home to individual plants.

**C** The electrical transmission line property (Figure 1c) did not contain any purple loosestrife plants again this year.

**A** Upstream of the Port Edwards Dam (Figure 2a) purple loosestrife continues to appear intermittently. The rock outcrops and islands have single and double plants. Immediately downstream of the Port Edwards Dam there are two areas of 20+ plants. The first is on the left bank immediately downstream of the dam. There are 35+ plants that start at the water's edge and move up the bank. This is especially odd since the 2007 survey indicated that there were no plants at this location (likely a result of the 2006 eradication effort). <sup>13</sup> A second location is the rock outcrop in contact with the Port Edwards Dam and immediately downstream. This area has 20+ purple loosestrife plants. A couple of the adjacent rock outcrops also have single plants present.

Following the river channel downstream of the Port Edwards Dam, there continues to be purple loosestrife present on the rocky outcrops in this shallow portion of the river. When the Wisconsin River turns westward (and becomes somewhat deeper) passing the Port Edwards Papermill, there continues to be very few (if any) purple loosestrife present. The reservoir continues to have plants present on the bank adjacent to Wisconsin River Drive (Highway 54). No significant change was noted in either numbers or spatial distribution of the plants.

Downstream of the Port Edwards Papermill the islands appear free of purple loosestrife (Figure 3a). The Wisconsin River runs westerly here with steep and occasionally overhanging banks. The habitat is not conducive to purple loosestrife. Also, the area around Harvey Creek is very difficult to access, with observations from the opposite bank being less reliable.

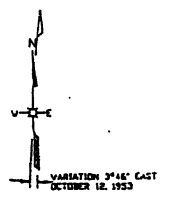
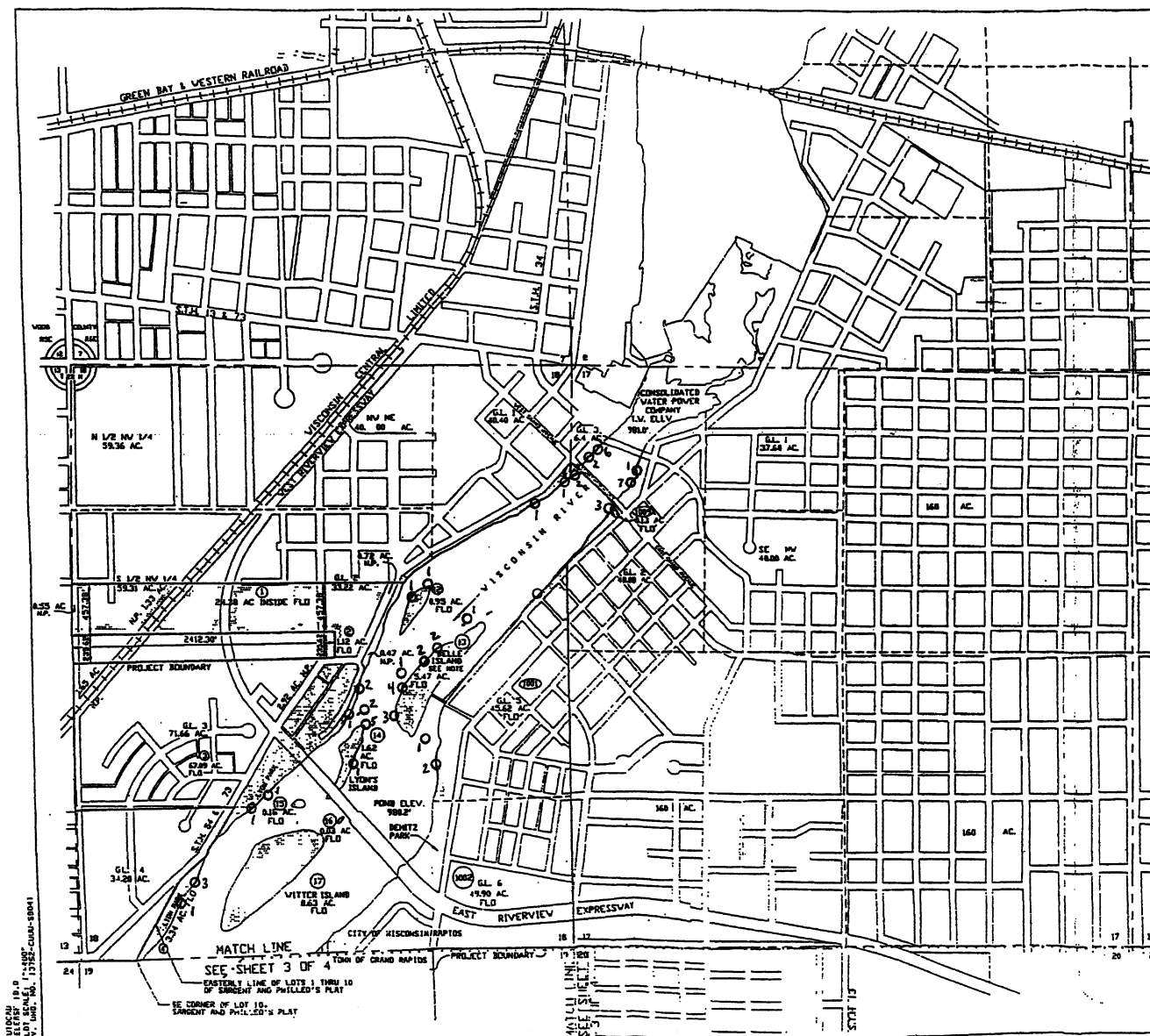
As the Wisconsin River turns and flows southward, there are several clusters of purple loosestrife including a cluster of 14 plants at a clearing for a local business easement. Lowlands that stretch from the bank in this area to Highway 73 contain several clusters of purple loosestrife. These areas have seen a slight increase in the number of plants.

Further downstream to Robinson Park and the adjacent neighborhoods purple loosestrife appears as before in small clusters of 3 and 4 plants. At the downstream end of Robinson Park there is a lowland area that supports a large number, 14, of thriving plants (Figure 3b). At the Highway 73 bridge there are several plants along the right bank just as in the past. At and below the Nekoosa Dam there are a few purple loosestrife scattered in this area, with two locations along the left bank with 6 and 7 plants each.

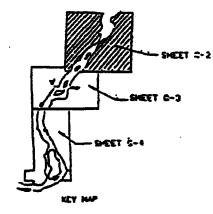
## **CONCLUSIONS**

The presence of purple loosestrife has increased slightly in the area upstream of the Centralia Dam, moving into the Wisconsin Rapids area. Between the Centralia and Port Edwards Dams the purple loosestrife population has stayed relatively constant. However, below the Port Edwards Dam there has been an increase at two locations immediately below the dam. Between the Port Edwards and Nekoosa Dams the purple loosestrife population has stayed constant, with an increase at the easement along the right bank upstream of Robinson Park. From Robinson Park to the downstream limit of the project property the purple loosestrife has stayed relatively constant.

Dan Cummins  
Cummins Environmental, LLC  
1451 Rounds Round  
Wisconsin Rapids, Wisconsin 54494  
715-423-8930



COUNTY: WOOD  
STATE: WISCONSIN



- FLOODAGE RIGHTS
- PARCEL NO.

NOTE: BELLE ISLAND IS CLAIMED BY THE UNITED STATES AND ADMINISTERED BY THE BUREAU OF LAND MANAGEMENT. THIS CLAIM IS DISPUTED.

THIS DRAWING IS A PART OF THE APPLICATION FOR LICENSE MADE BY THE UNDERSIGNED THIS DATE - MAY 27, 1959.

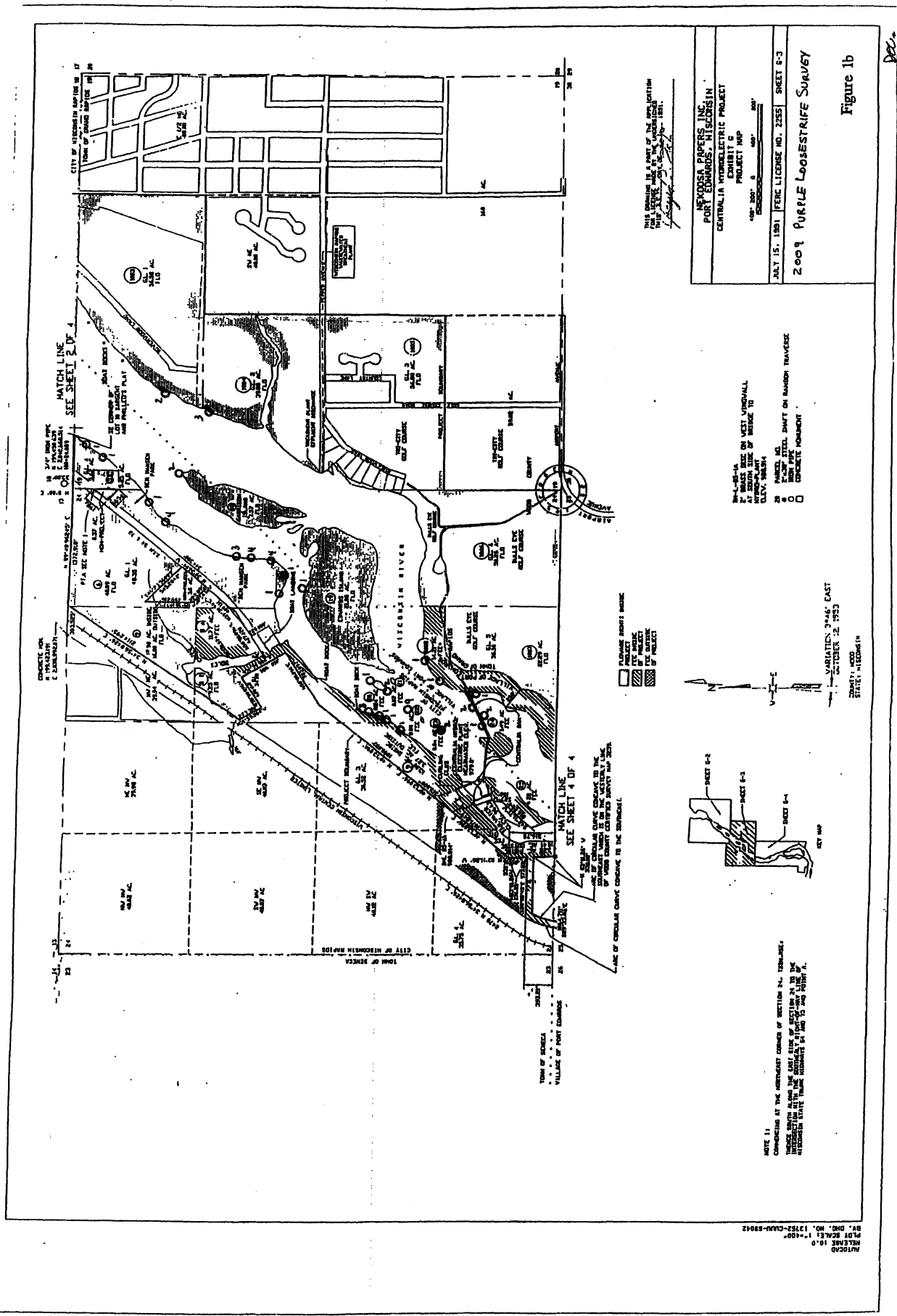
NEKOOSA PAPERS INC. PORT EDWARDS, WISCONSIN CENTRALIA HYDROELECTRIC PROJECT EXHIBIT 5 PROJECT MAP 400' 200' 0' 400' 200' 1"=400'	
AUGUST 24, 1959 FERC LICENSE NO. 2255	SHEET C-2
2009 PURPLE LOOSESTRIFE SURVEY	

Figure 1a

MASON 10.0  
 PLAT 5  
 BY: MASON, 12/25/58-CR-10001

MATCH LINE  
 SEE SHEET 3 OF 4  
 EASTERN LINE OF LOTS 1 THRU 10  
 OF SARGENT AND PHILLIP'S PLAT  
 BE CORNER OF LOT 10,  
 SARGENT AND PHILLIP'S PLAT

MATCH LINE  
 SEE SHEET 4 OF 4  
 WESTERN LINE OF LOTS 1 THRU 10  
 OF SARGENT AND PHILLIP'S PLAT

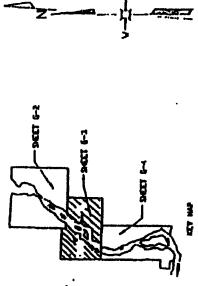


NEVOSA PAPERS, INC.  
 PORT EDWARDS, WISCONSIN  
 CENTRALIA HYDROELECTRIC PROJECT  
 EXHIBIT C  
 PROJECT MAP  
 1/8" = 100' ±  
 JULY 15, 1991 FERC LICENSE NO. 2255 SHEET 6-3  
 2001 PURPLE LOOSETRIFE SURVEY

Figure 1b

- 1. BRASS BENCH ON WEST VIRGINIA
- 2. PAVED STEEL SHIFT ON RANDOM TRAVERSE
- 3. CONCRETE FOUNDATION

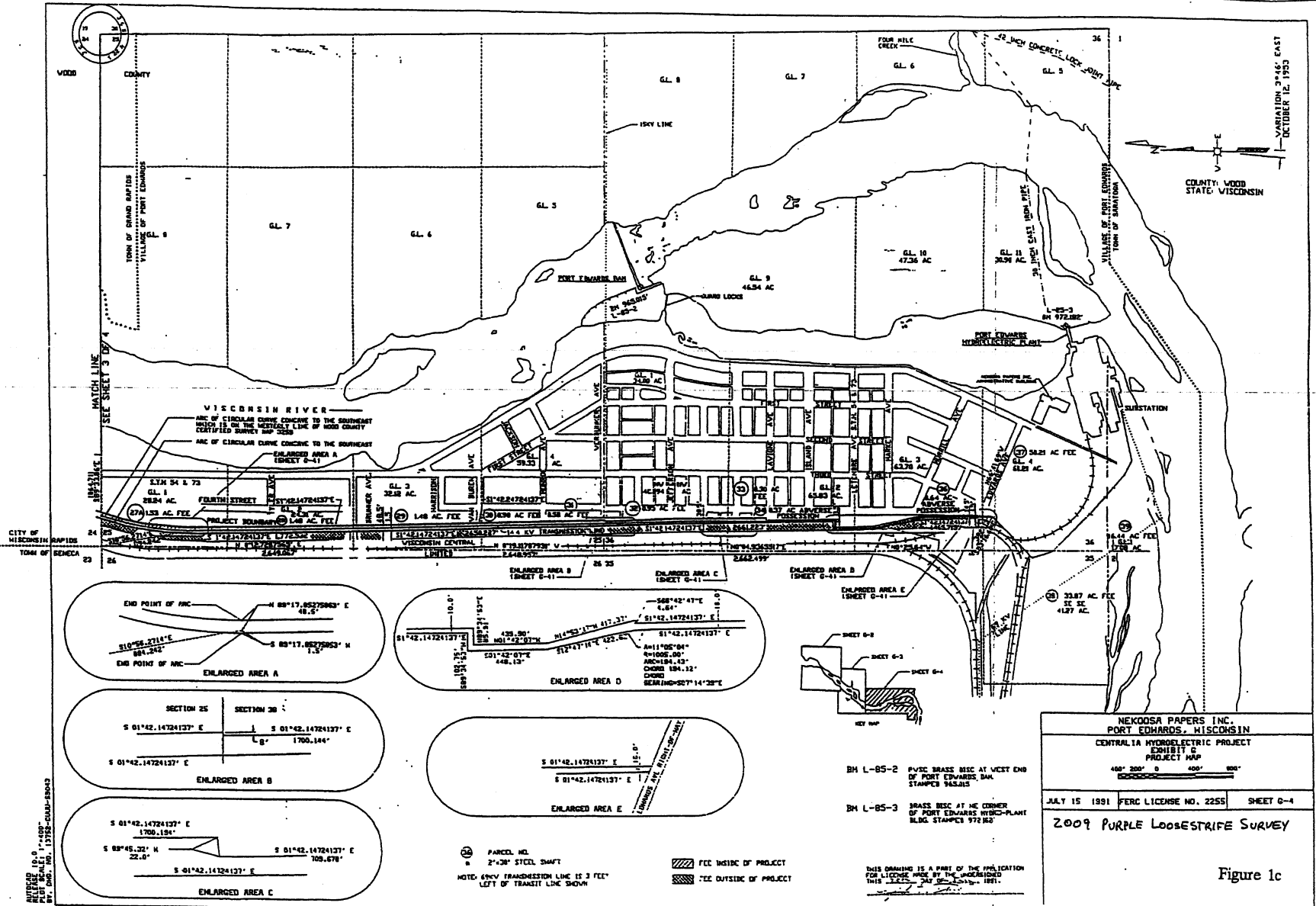
- BOUNDARY MARKER
- ▨ PROJECT
- ▧ EXISTING
- ▩ EXISTING
- PROJECT



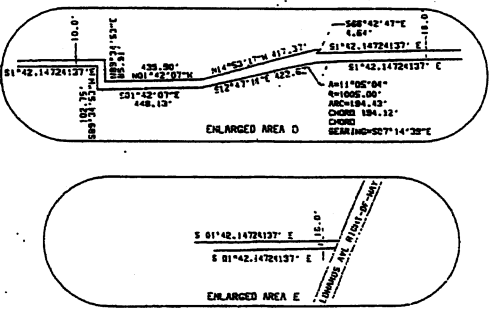
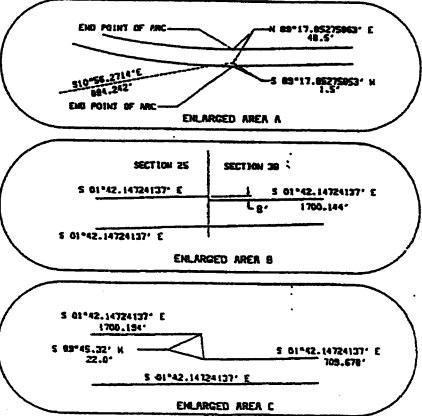
NOTE 1:  
 COMMENCING AT THE NORTHWEST CORNER OF SECTION 24, TOWNSHIP 4  
 THENCE NORTH ALONG THE EAST LINE OF SECTION 24 TO THE  
 INTERSECTION STATE TRUNK HIGHWAY 100 AND THE WEST LINE OF  
 WISCONSIN STATE TRUNK HIGHWAY 100 TO THE POINT OF

VARIABLES: 2946; EAST  
 2001; WEST  
 STATE, WISCONSIN

PLotted  
 REFERENCE 10.0  
 BY SCALE 1"=100'  
 BY DATE 12/1/91  
 13752-CAM-58042



ADDED 10.0  
FEET SHEET 1-428  
BY: DMS. NO. 1218-COAR-5043



⊙ PARCEL NO.  
 2"=200' SCALE  
 NOTE: 4KV TRANSMISSION LINE IS 3 FEET  
 LEFT OF TRANSIT LINE SHOWN

▨ FEE INSIDE OF PROJECT  
 ▨ FEE OUTSIDE OF PROJECT

BH L-85-2 PVC BRASS BISC AT WEST END  
 OF PORT EDWARDS DAM  
 STAMPER 345.815

BH L-85-3 BRASS BISC AT NE CORNER  
 OF PORT EDWARDS HYDRO-PLANT  
 BLDG STAMPER 972.862

THIS DRAWING IS A PART OF THE APPLICATION  
 FOR LICENSE MADE BY THE UNDERGROUND  
 THIS 22<sup>ND</sup> DAY OF JULY 1991.



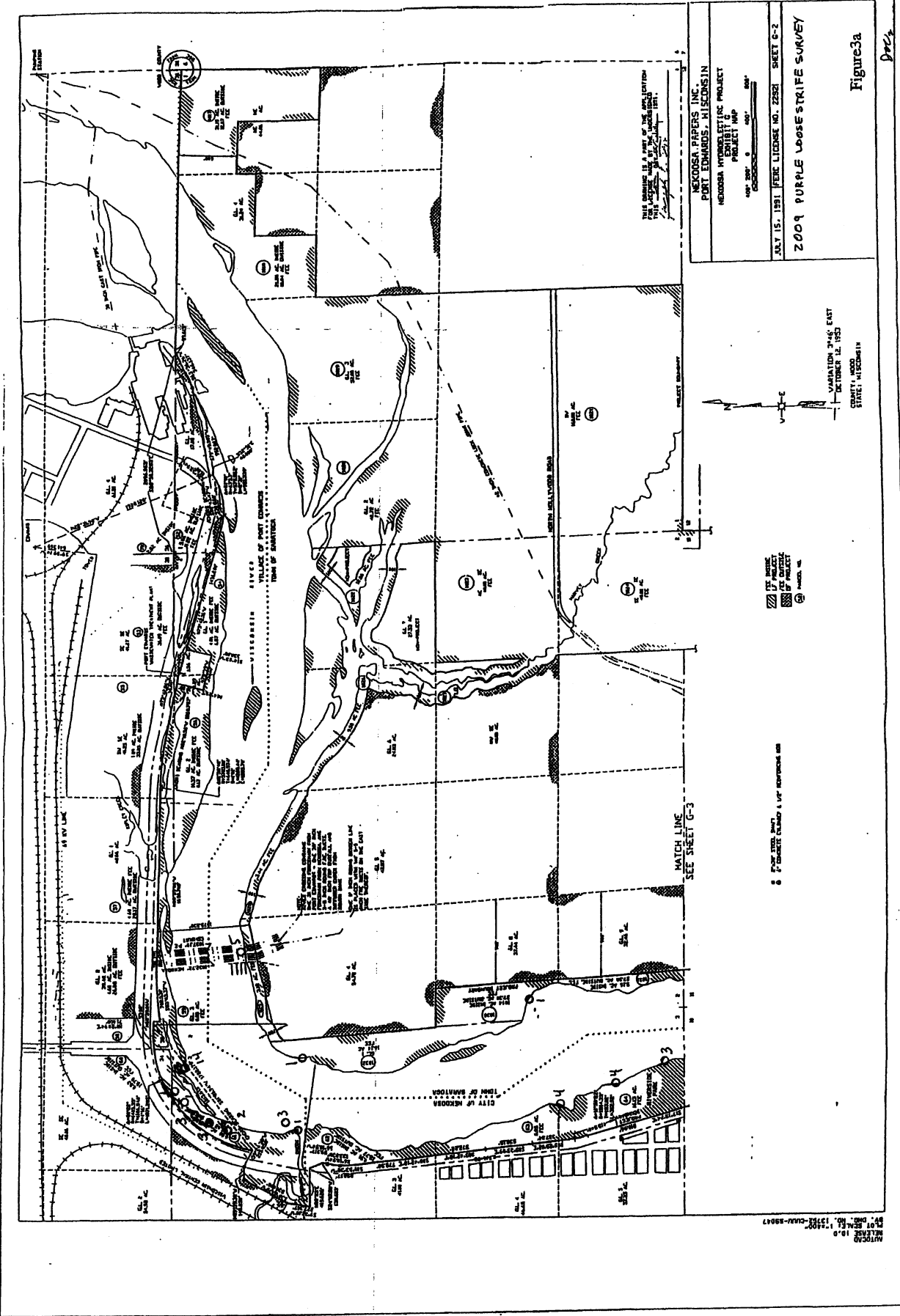
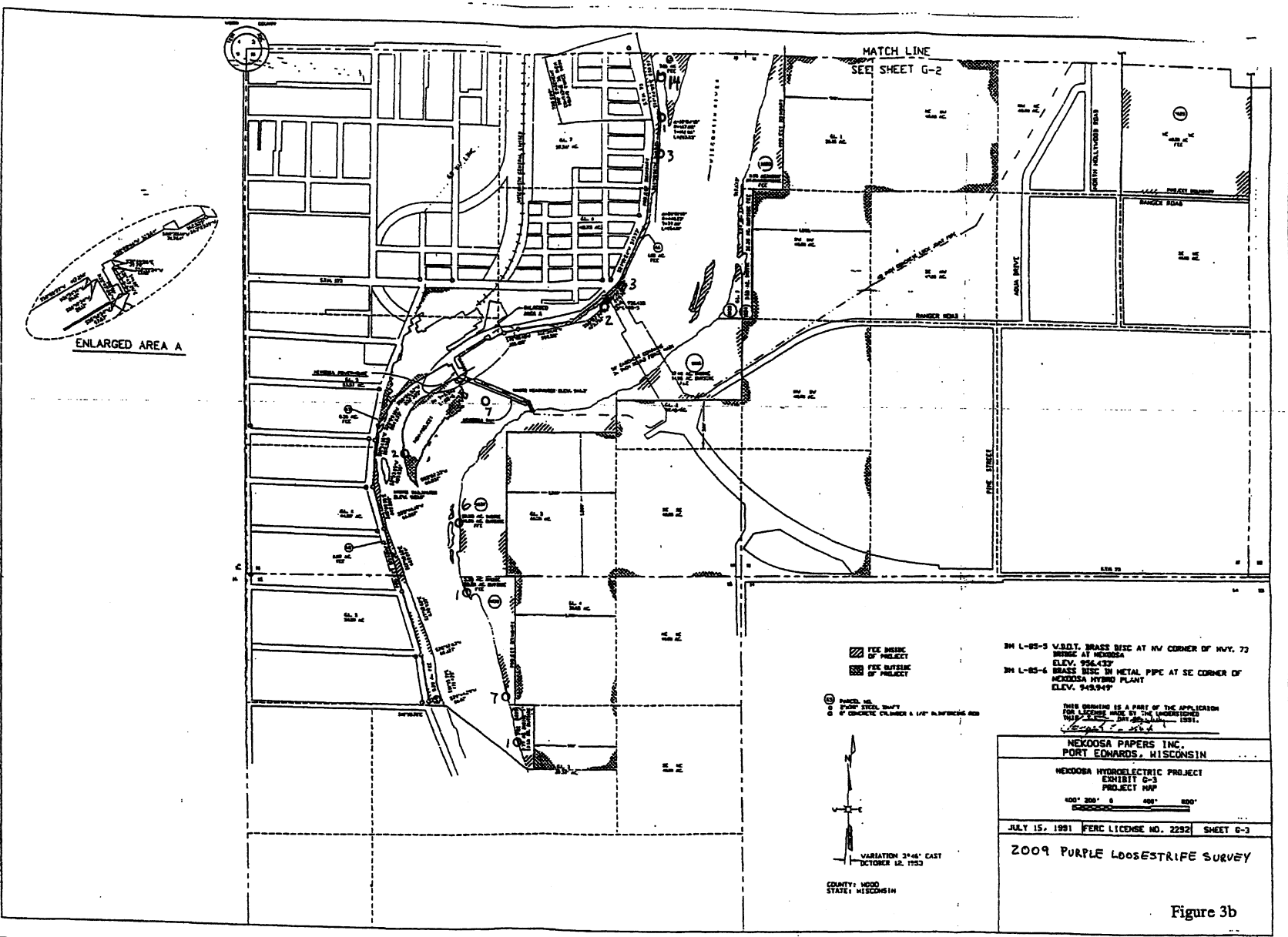


Figure 3a

Pre





DPC