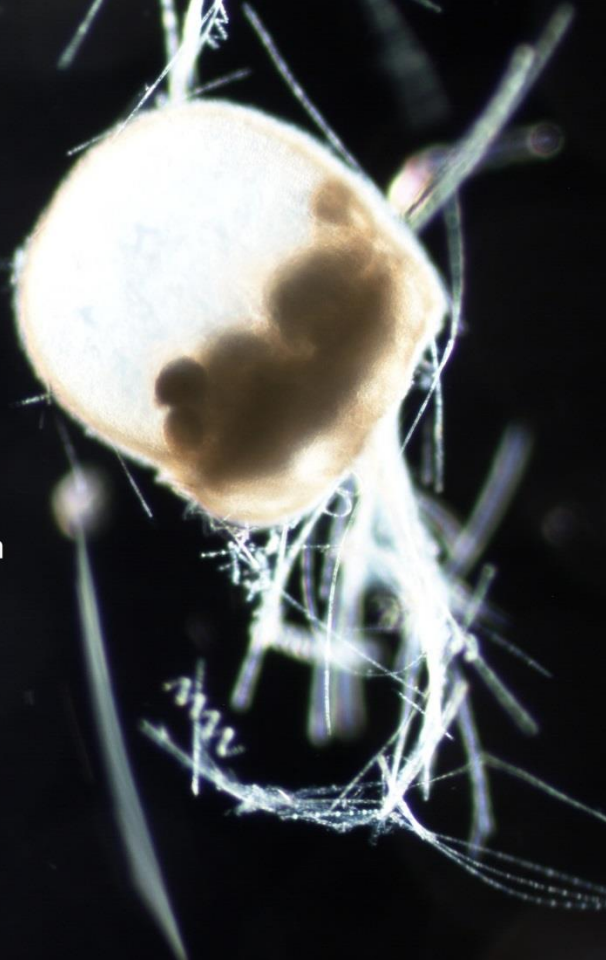
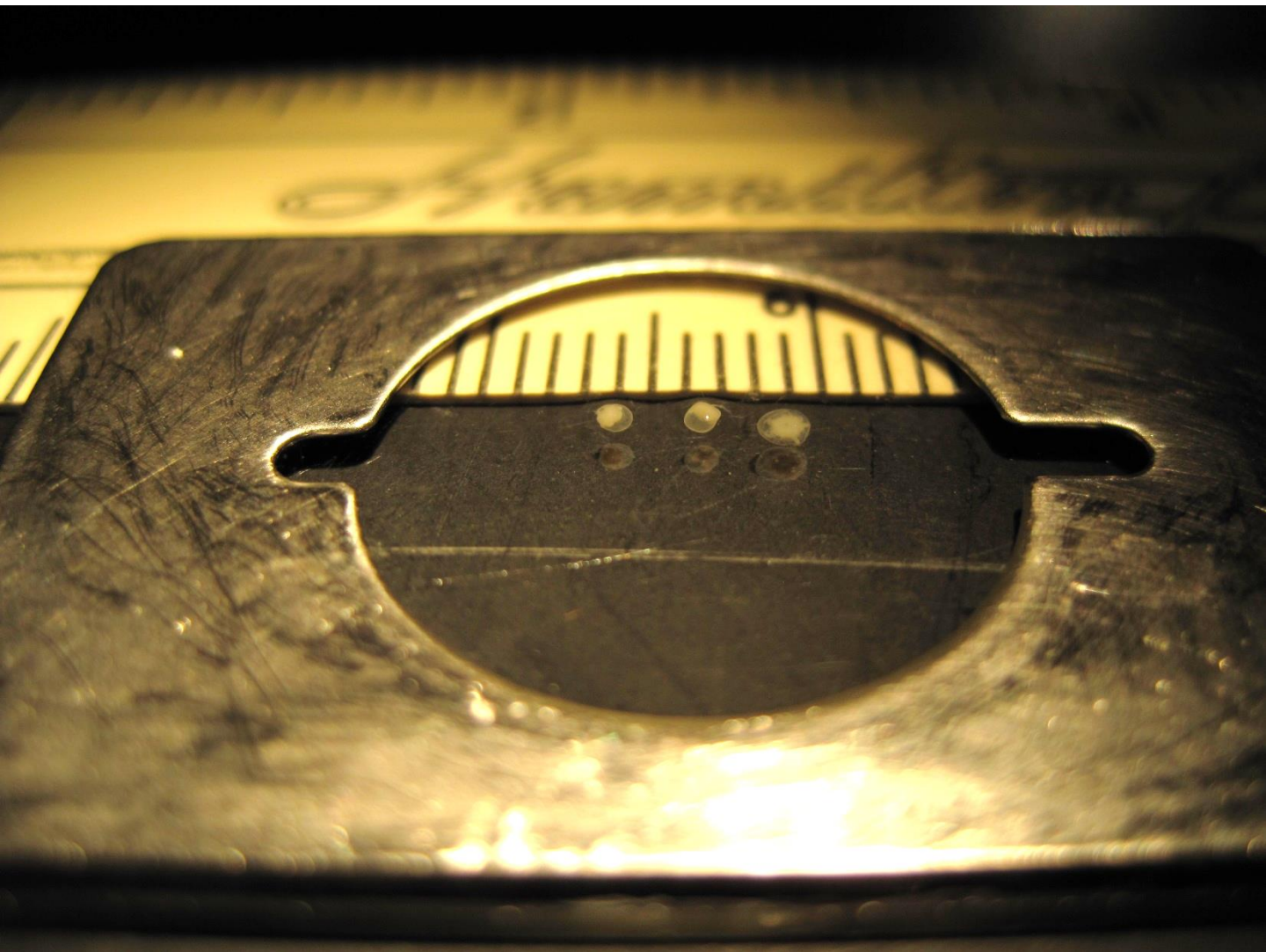




Freshwater jellyfish
Craspedacusta sp. ?
Johnson Falls Flowage
Marinette County, WI
WBIC 533300
Collected in spiny waterflea tow
on 07-14-2015 by Michelle Nault
& Ryan Motiff
Identified by Gina LaLiberte

Population of immature medusae,
which would not have been
identifiable with the naked eye.





The largest specimens were less than 2 mm in diameter.