

Data collectors: Scott Van Egeren & Erin Ver e-Vollrath

June 13th & 14, 2017

Powers Lake, Kenosha County

WBIC: 744200

Start Time: 17:00 → 18:20
6/19 → 8:45
6/20

End Time: 12:45 6/20

Species	Latitude	Longitude	Density	
BMS, ZM, CLP	42.55132	-88.28851	3, 3, 1	
Boat landing #1				
#2	BMS, ZM, EWM, CLP	42.54246	-88.29076	2, 2, 3, 1
Search site #1	ZM, BMS	42.55269	-88.29423	3, 2
#2				
#3	ZM, BMS	42.54509	-88.30534	3, 2
rocky island in middle				
#4	ZM, BMS, EWM, Phragmites (native?)	42.54490	-88.29100	3, 2, 2 1
Sandy point				
#5	ZM, BMS	42.54836	-88.28695	4, 2
meander site #1	EWM	42.55000	-88.30201	1
meander #2	EWM	42.54859	-88.30219	2
Search site #2	Phragmites?, CLP, BMS, ZM	42.54782	-88.30865	2, 1, 3, 2
developed shores bay				

Step 3: Waterflea Tows

Method: Oblique

Diameter of net: 50 cm.

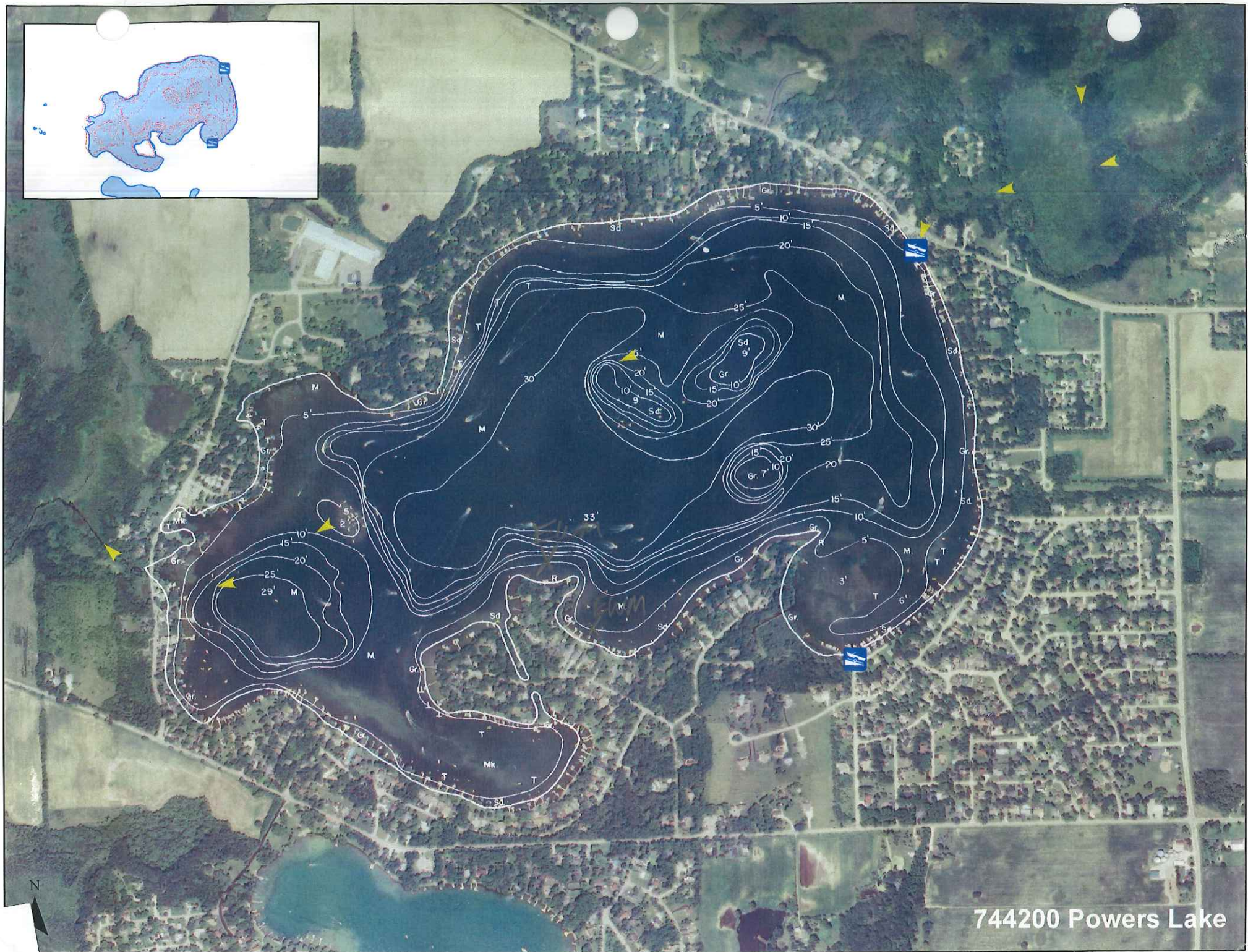
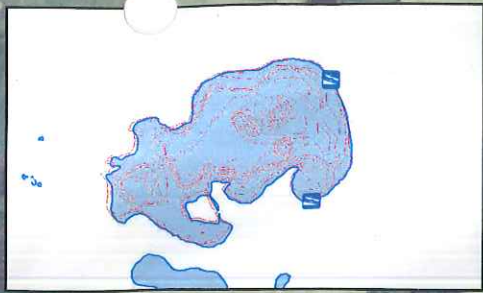
Depth: Tow 1: 15'

Tow 2: 20'

Tow 3: 15'

ETOH added: ~~Y/N~~

Data entered into SWIMS on 6/21/12 by Erin Vennie-Vollath



744200 Powers Lake