

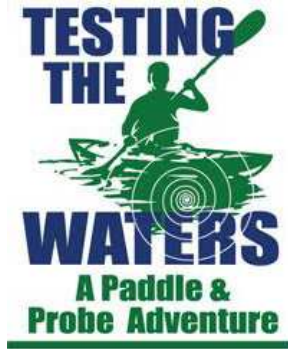
# Testing the Waters: A Paddle and Probe Adventure

May 15 – 25, 2016

10 Days of Collecting Data and  
Highlighting the Amazing Rock River Basin

Brought to you by the Rock River Coalition  
with support from

Rock River Stormwater Group, Rock River Trail Initiative,  
University of Wisconsin-Whitewater and the Wisconsin  
Department of Natural Resources



**Our Goal: To engage communities of the Rock River Basin by exploring water quality issues, recreational opportunities and the role of the public in water conservation by:**

## 1. Collecting, Analyzing and Sharing Water Quality Data

- Collect data continuously with a probe mounted on the front of a kayak. Parameters include: pH, temperature, dissolved oxygen, and conductivity.

Data uploaded via cell phone and digitally displayed on a web map.

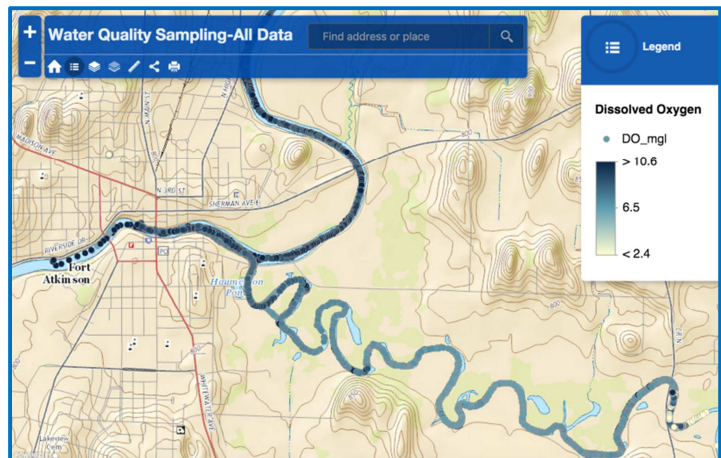
Take periodic grab samples for analysis of nutrients and bacteria.

## 2. Educating Students

- Daily classroom programs for grades 6-8.

## 3. Educating the Public

- Community evening programs for the community: Highlighting results to-date, water quality issues in the basin, sponsoring group efforts and providing an opportunity for participant pledges to improve water quality.
- Weekend community paddles and programs.
- Social Media updates during the event and videos about the river prior to the event.



*This dissolved oxygen map from Fort Atkinson shows the type of map that will be produced as we paddle.*

*Everyone will be able to follow us as we travel the river.*

## Become Part of the Event

Paddle with us through your town. Keep track of our progress on the RRC Facebook page or on <http://www.rockrivercoalition.org> or <http://testingwaters.org>.

### Become a sponsor:

\$5,000: Your organization's name/logo on the banner and on support signs for local businesses, on all printed handouts and videos, plus logo and links on the website.

\$1,000: Your organization's name/logo on event brochures and programs and website.

\$500: Your organization's name on website and programs.

\$100: Your name in the event programs.

In-kind support accepted in lieu of a cash donation such as:

**Lodging:** We will need hotels or camping spots each night.

**Meals:** Ten+ meals needed for each lunch and dinner.

**Canoes or Vehicles:** We will need vans, a trailer and possible kayaks.

Testing the Waters A Paddle and Probe Adventure ♦ Contact Suzanne Wade ♦ [suzanne@rockrivercoalition.org](mailto:suzanne@rockrivercoalition.org)  
Rock River Coalition ♦ 864 Collins Road ♦ Jefferson, WI 53549 ♦ 608-334-4517

# Testing the Waters a Paddle and Probe Adventure

## Draft Schedule 117 miles in Wisconsin

Date	Start	End	Distance
A: Sun. May 15	Mayville Rotary Park	Greenhead Landing	10.2
Mon. May 16	Greenhead Landing	Horicon –Stop at Clausing Bowling Green Park End at Legion Park	7.7
Tue. May 17	Kiwanis Park Horicon	Neider Park, Lake Sinissippi	8.3
Wed. May 18	Lions Park	Harnischfeger County Park	17.3
Thur. May 19	Harnischfeger	Kanow County Park	11.3
Fri. May 20	<i>Rest Day/Rain Day Make-up Volunteers paddle to Watertown</i>		
Sat. May 21	Tivoli Island Park	Rock River Park	13.7
Sun. May 22	Rock River Park	Stop at Rotary Waterfront Park, Jefferson, End at Elmore Klement Park	16
Mon. May 23	Elmore Klement Park, Fort Atkinson	Stop at Fish Hatchery, paddle up Bark, End at Vinnie Ha Ha Road	8.9+
Tue. May 24	Either Newville Public Access or Indianford County Park	Traxler Park, Janesville	11.9 or 15.5
Wed. May 25	Traxler Park Janesville	Riverside Park Beloit	13.6



*The water quality monitoring probe attached to a kayak, was developed, tested and calibrated at UW-Whitewater.*

*Learn more at <http://currentdata.co>*