

# Pheasant Branch at Century Ave

## Road Salt Monitoring Data Summary

February 2011–April 2014<sup>1</sup>



Photos courtesy of Jim Beecher

**Volunteers:** Jim Beecher

### Specific conductance summary:

- 44 measurements taken
- Minimum: 490  $\mu\text{S}/\text{cm}$  on 3/30/2013
- Maximum: 5100  $\mu\text{S}/\text{cm}$  on 1/29/2013
- Mean: 1432  $\mu\text{S}/\text{cm}$

### Chloride ( $\text{Cl}^-$ ) summary:

- 11 samples collected
- Minimum: 114 mg/L on 9/11/2011
- Maximum: 839 mg/L on 1/23/2012
- Mean: 393 mg/L

### EPA Acute and Chronic Exceedences for Chloride<sup>2</sup>:

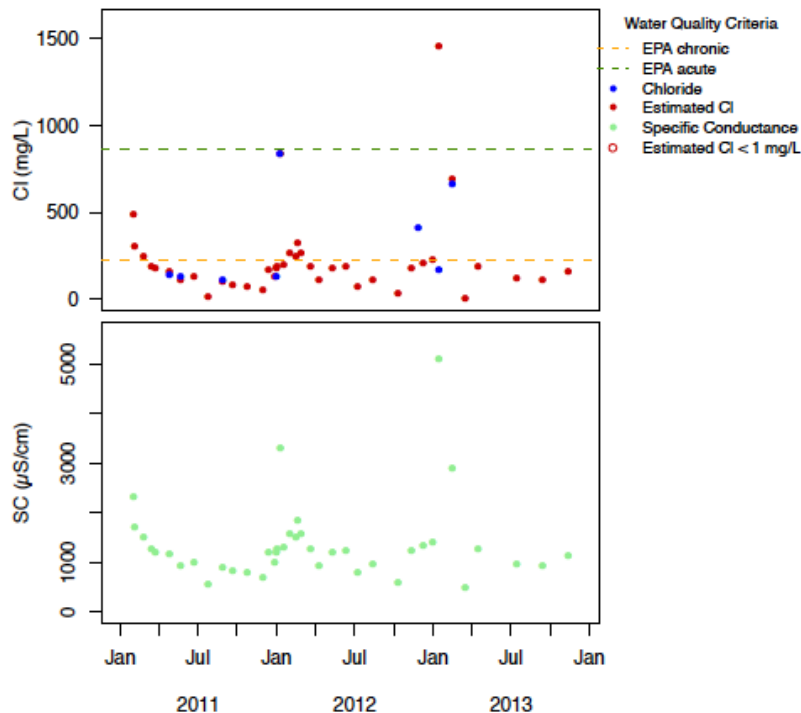
The EPA acute chloride standard of 860 mg/L was exceeded once at this site:

- 1455 mg/L on 1/29/2013 (calculated)<sup>3</sup>

The EPA chronic chloride standard of 230 mg/L was exceeded 12 additional times at this site. IN addition to those exceedences shown on the graph below, the following were measured or predicted:

- 577 mg/L on 1/13/2014 (measured)
- 686 mg/L on 2/19/2014 (measured)
- 457 mg/L on 3/9/2014 (measured)

### Results Through December 2013:



<sup>1</sup> All data in SWIMS as of 8/26/2014 were downloaded

<sup>2</sup> Source: EPA. 1988. Ambient Water Quality Criteria for Chloride. EPA 440/6-88-001.

<sup>3</sup> Calculated chloride:  $\text{Cl} = 0.242 \times \text{SC} - 115.2$   $\text{adjR}^2 = 0.8$ , except when  $\text{SC} > 2250$ , then  $\text{Cl} = 0.346 \times \text{SC} - 309.8$ ,  $\text{adjR}^2 = 0.97$