

Mason Creek at Petersen Rd

Road Salt Monitoring Data Summary

November 2012- July 2014¹



Photo by Jim Beecher

Volunteer: Jayne Jenks

Specific conductance summary:

- 32 measurements taken
- Minimum: 430 $\mu\text{S}/\text{cm}$ on 1/30/2013
- Maximum: 980 $\mu\text{S}/\text{cm}$ on 11/12/2012
- Mean: 783 $\mu\text{S}/\text{cm}$

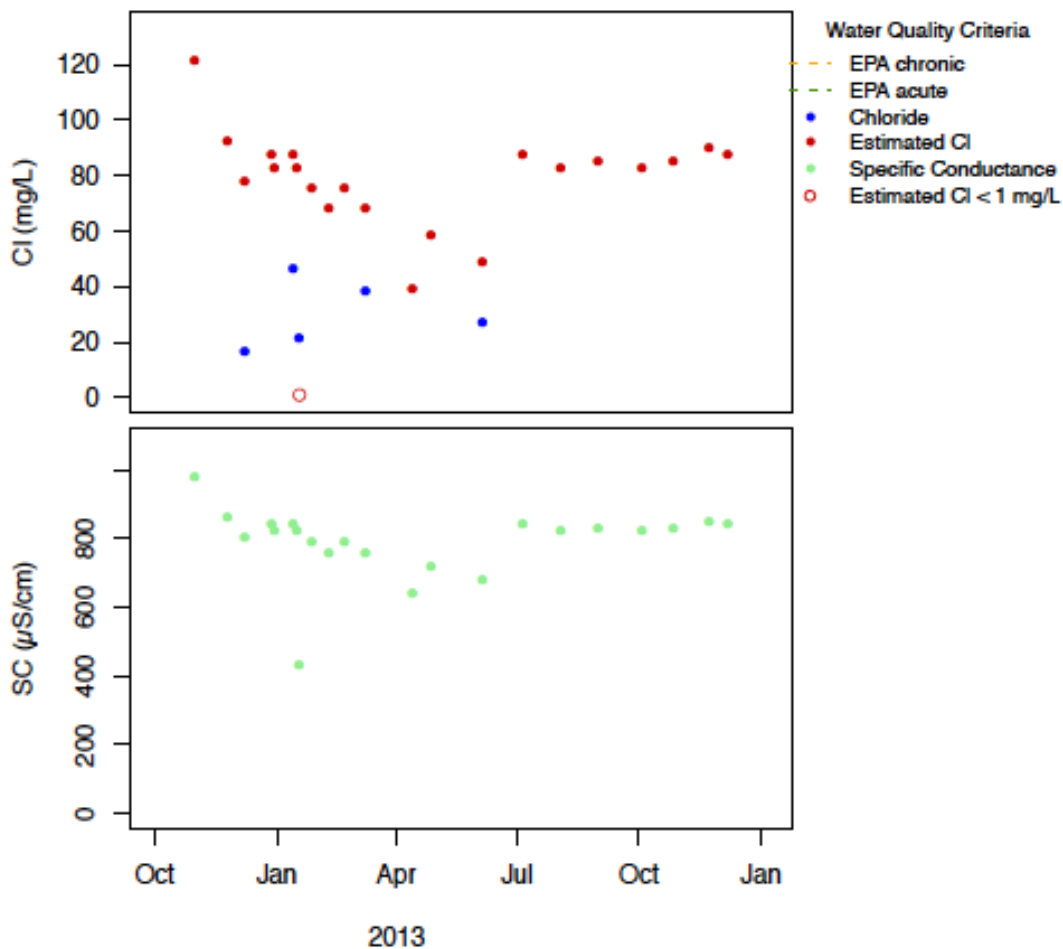
Chloride (Cl^-) summary:

- 5 samples collected
- Minimum: 16.8 mg/L on 12/20/2012
- Maximum: 46.5 mg/L on 1/25/2013
- Mean: 30 mg/L

EPA Acute and Chronic Exceedences for Chloride²:

Neither the EPA acute chloride standard of 860 mg/L nor the EPA chronic chloride standard of 230 mg/L have been exceeded at this site.

Results Through December 2013³:



¹ All data in SWIMS as of 8/26/2014 were downloaded

² Source: EPA. 1988. Ambient Water Quality Criteria for Chloride. EPA 440/6-88-001.

³ Calculated chloride: $\text{Cl} = 0.242 * \text{SC} - 115.2$, $\text{adjR}^2 = 0.8$, except when $\text{SC} > 2250$, then $\text{Cl} = 0.346 * \text{SC} - 309.8$, $\text{adjR}^2 = 0.97$