

Zion Creek at Oakton Rd

Road Salt Monitoring Data Summary November 2012- July 2014¹



Photo by Jim Beecher

Volunteer: Jayne Jenks

Specific conductance summary:

- 31 measurements taken
- Minimum: 870 $\mu\text{S}/\text{cm}$ on 6/17/2013
- Maximum: 1660 $\mu\text{S}/\text{cm}$ on 2/20/2014
- Mean: 1249 $\mu\text{S}/\text{cm}$

Chloride (Cl⁻) summary:

- 6 samples collected
- Minimum: 52 mg/L on 12/20/2012
- Maximum: 314 mg/L on 2/20/2014
- Mean: 160 mg/L

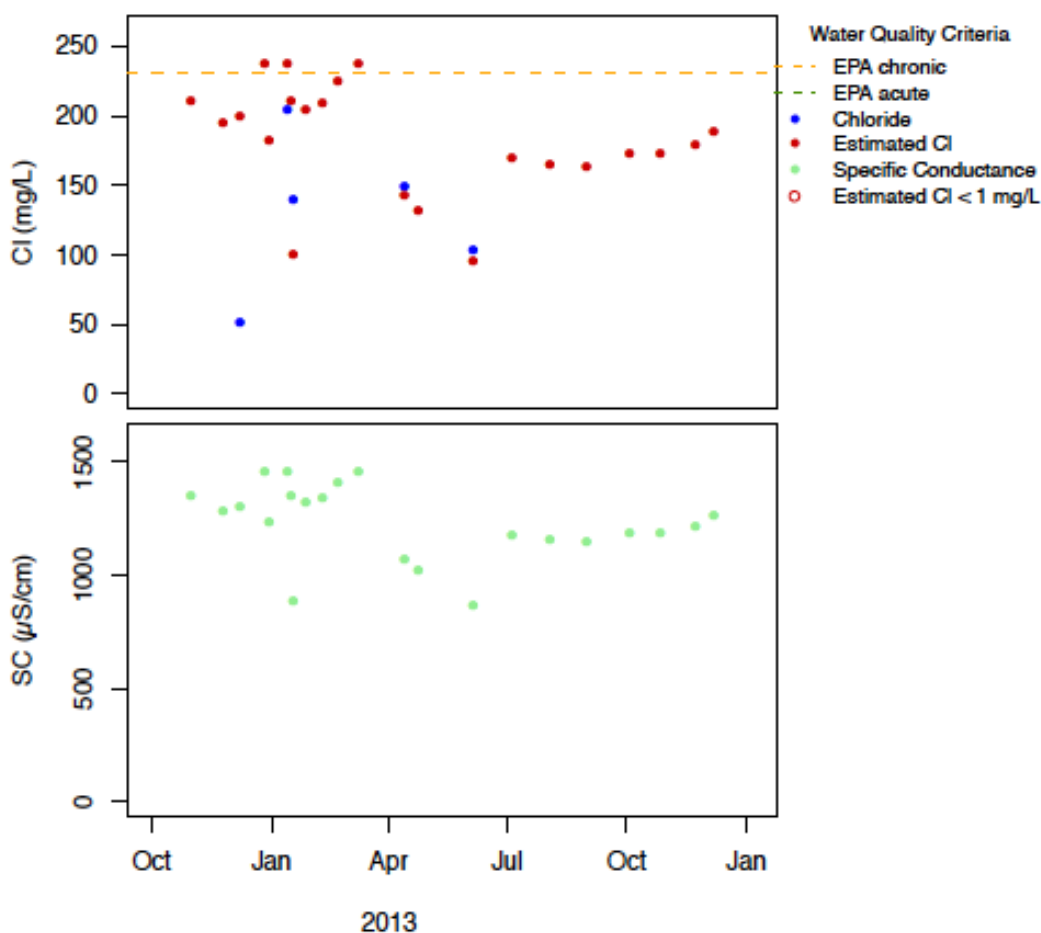
EPA Acute and Chronic Exceedences for Chloride²:

The EPA acute chloride standard of 860 mg/L has not been exceeded at this site.

The EPA chronic chloride standard of 230 mg/L was measured or predicted to have been exceeded on four occasions:

- 238 mg/L on 1/8/2013 (calculated)³
- 238 mg/L on 1/25/2013 (calculated)
- 314mg/L on 2/20/2014 (measured)

Results Through December 2013³:



¹ All data in SWIMS as of 8/26/2014 were downloaded

² Source: EPA. 1988. Ambient Water Quality Criteria for Chloride. EPA 440/6-88-001.

³ Calculated chloride: $\text{Cl} = 0.242 * \text{SC} - 115.2$, $\text{adjR}^2 = 0.8$, except when $\text{SC} > 2250$, then $\text{Cl} = 0.346 * \text{SC} - 309.8$, $\text{adjR}^2 = 0.97$