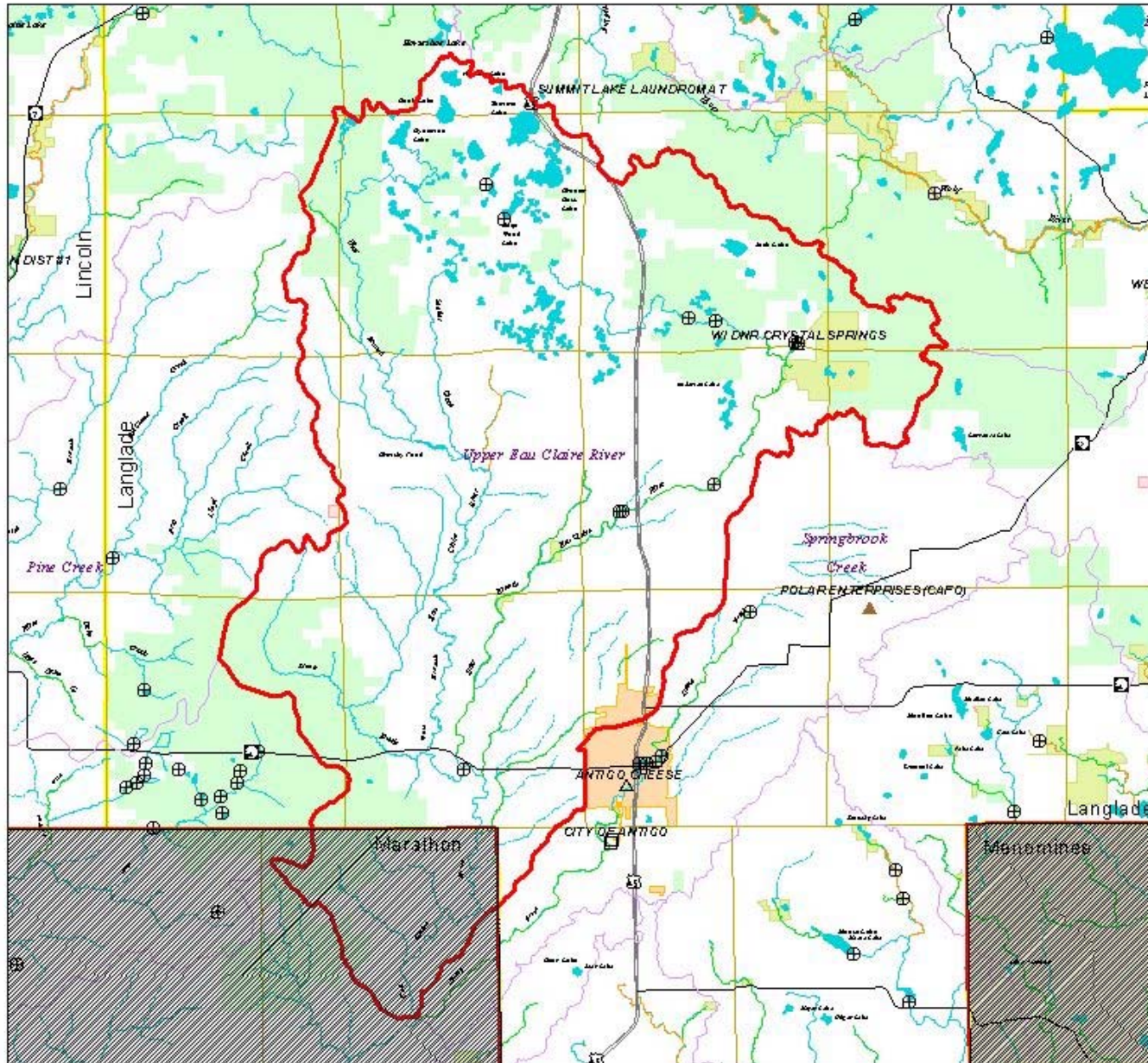
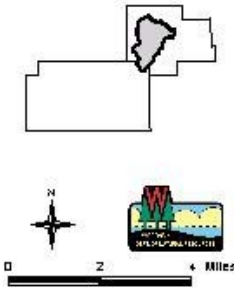


Upper Eau Claire River Watershed/Uw22-171



- Watershed Boundary
- Adjacent Management Unit
- Dams
- Wastewater Industrial Discharge**
 - Ground Water
 - Surface Water
- Wastewater Municipal Discharge**
 - Ground Water
 - Surface Water
- Resource Waters**
 - Outstanding
 - Exceptional
- Municipalities**
 - Langlade
 - Marathon
 - Menominee
- Public Lands**
 - National Forests
 - County Forests
 - Federal Lands
 - Indian Reservations
- DWR Managed Lands**
 - Ownership
 - Easement
 - Lease



1:230000

The data shown in this map has been obtained from various sources, and is of varying accuracy and resolution. This map is not intended to be used for navigation, nor is this map an authoritative source of information on legal and ownership or public access. Users of this map should refer to the ownership or public access information in order to avoid trespassing. No warranty, expressed or implied, is made regarding accuracy, applicability, or in particular, any responsibility or liability of the information depicted on this map.

Map Creator:
Rick Jirsa
January 12, 2001