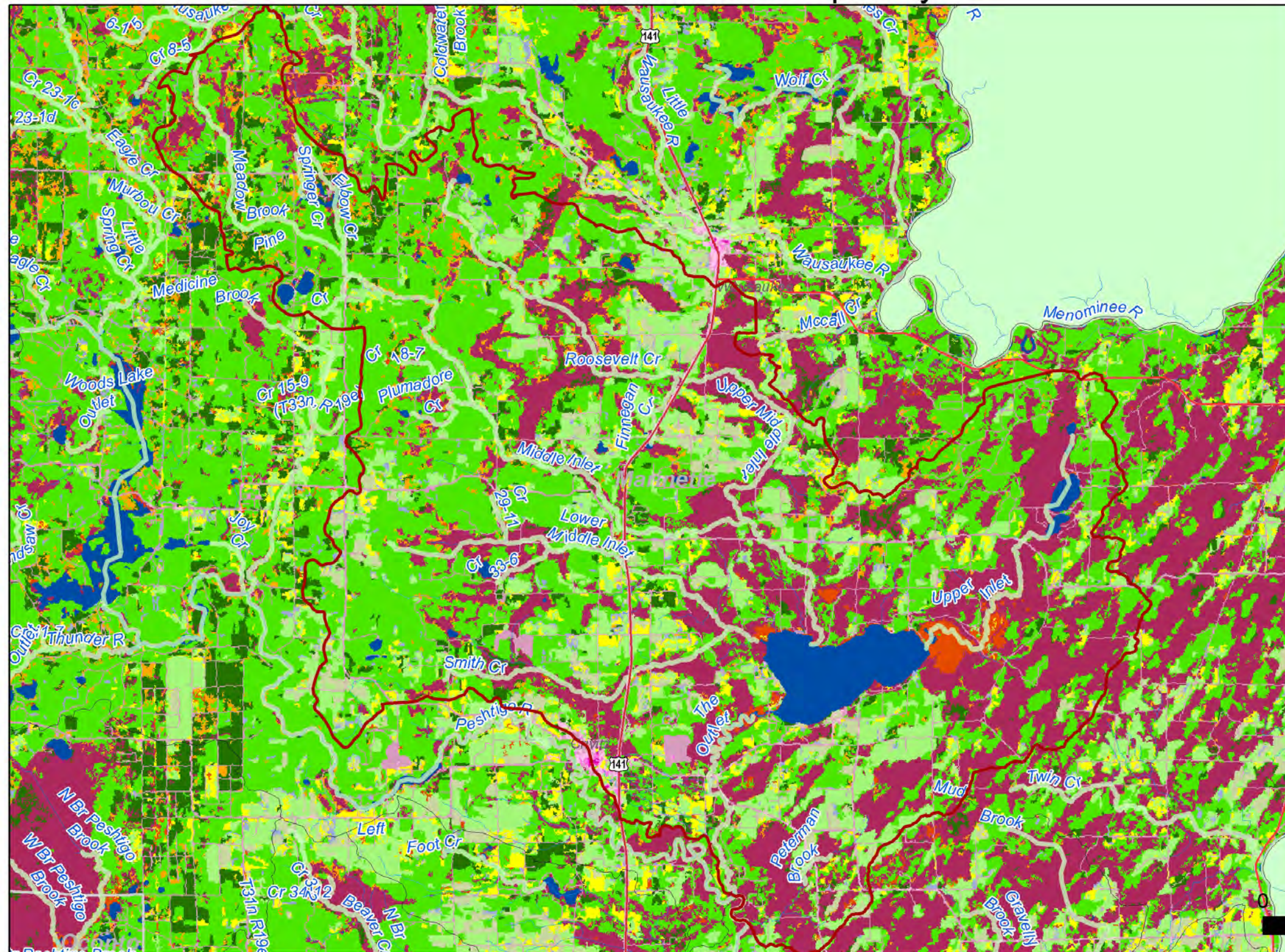


Middle Inlet and Lake Noquebay



GB09



- | | | | |
|--|--------------------|--|------------------------------|
| | US Highway | | Watersheds |
| | Interstate Highway | | Counties |
| | State Highway | | Municipalities |
| | Assessment Waters | | Open Water |
| | | | Developed, Open Space |
| | | | Developed, Low Intensity |
| | | | Developed, Medium Intensity |
| | | | Developed, High Intensity |
| | | | Barren Land |
| | | | Deciduous Forest |
| | | | Evergreen Forest |
| | | | Mixed Forest |
| | | | Shrub/Scrub |
| | | | Grassland/Herbaceous |
| | | | Pasture/Hay |
| | | | Cultivated Crops |
| | | | Woody Wetlands |
| | | | Emergent Herbaceous Wetlands |

Miles

0 1 2 4 6