



**HILLTOPPER**  
**REFUSE & RECYCLING**  
**SERVICE INC.**

**2020 MRF**  
**STAKEHOLDER**  
**MEETING**

BRANDON KNUDTSON & KYLE KNUDTSON  
14 DECEMBER 2020

# 2020 OPERATIONS

## Markets & Collected Material

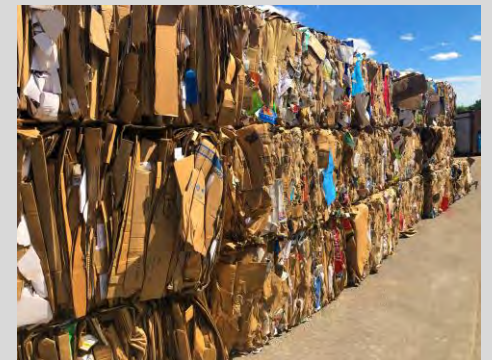
- Stable Markets
- Glass Recycling
  - Steady Movement
  - Quality Improvement Project
- Plastic Recycling
  - PET & HDPE Natural & Color – Bottle Form
- Paper Cup Recycling
  - Material Added with Cartons – Late Summer 2020

## Pandemic Impacts

- No Significant Impacts
- Workforce
- Collected Residential Recycling
  - **9.4%** Increase (April-Nov. 2019 vs April-Nov. 2020)
- Paycheck Protection Program

## Operating System

- Dual Stream
  - Reviewing Capital Improvements



# 2020 OPERATIONS CONT.

## Contamination

- **3.7%** Contamination Rate – YTD
- **~0.95%** Increase in Contamination Rate
  - Single Stream Loads
- Biggest Issues
  - Plastic Bags, #3 - #7 Plastics, #1 & #2 Plastics – Non-Bottle Form
- Steps to Reduce Contamination
  - Educational Programs
  - Municipal Brochures, Visuals

## Non-Curbside Recycling

- Mattresses/Box Springs, Appliances, E-Waste, Lightbulbs & Batteries



**HILLTOPPER**  
**REFUSE & RECYCLING**  
**SERVICE INC.**