

Jefferson Tamarak Swamp  
State Natural Area

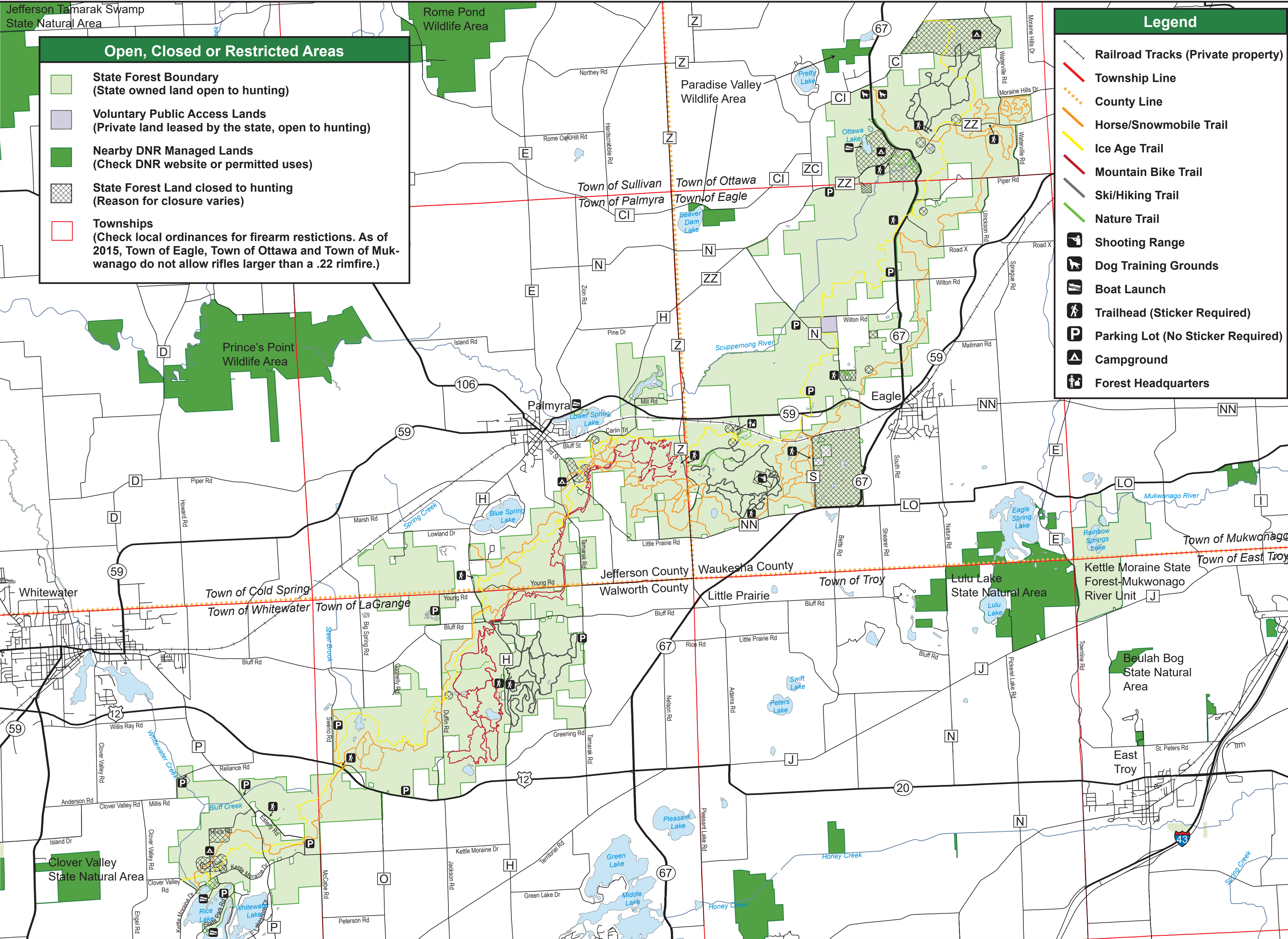
Rome Pond  
Wildlife Area

### Open, Closed or Restricted Areas

- State Forest Boundary  
(State owned land open to hunting)
- Voluntary Public Access Lands  
(Private land leased by the state, open to hunting)
- Nearby DNR Managed Lands  
(Check DNR website or permitted uses)
- State Forest Land closed to hunting  
(Reason for closure varies)
- Townships  
(Check local ordinances for firearm restrictions. As of 2015, Town of Eagle, Town of Ottawa and Town of Mukwanago do not allow rifles larger than a .22 rimfire.)

### Legend

- Railroad Tracks (Private property)
- Township Line
- County Line
- Horse/Snowmobile Trail
- Ice Age Trail
- Mountain Bike Trail
- Ski/Hiking Trail
- Nature Trail
- Shooting Range
- Dog Training Grounds
- Boat Launch
- Trailhead (Sticker Required)
- Parking Lot (No Sticker Required)
- Campground
- Forest Headquarters



# Kettle Moraine State Forest-Southern Unit Hunting Map

