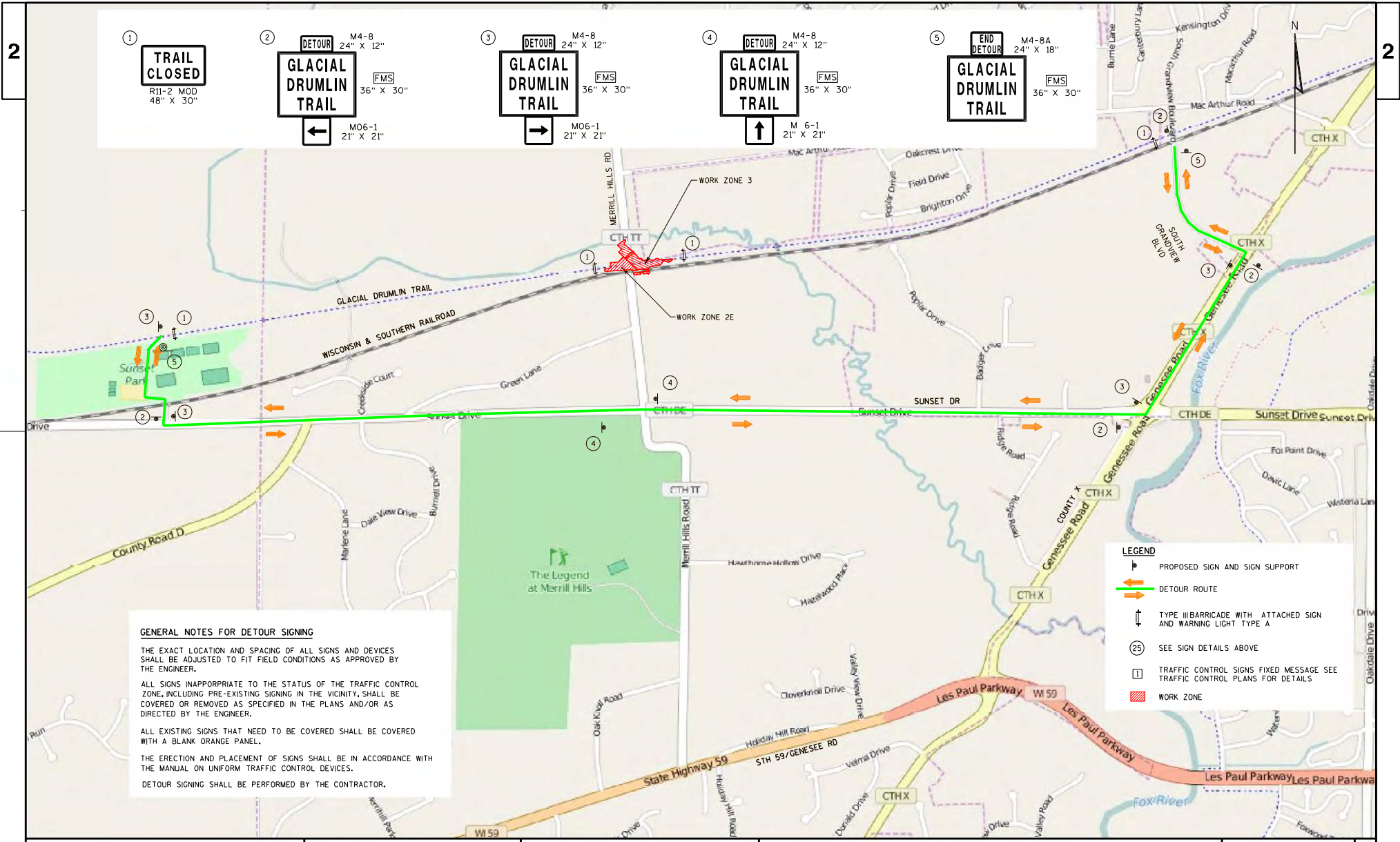


Glacial Drumlin State Trail - Town of Waukesha Detour



- ① **TRAIL CLOSED**
R11-2 MOD
48" X 30"
- ② **DETOUR** M4-8 24" X 12"
GLACIAL DRUMLIN TRAIL FMS 36" X 30"
← MO6-1 21" X 21"
- ③ **DETOUR** M4-8 24" X 12"
GLACIAL DRUMLIN TRAIL FMS 36" X 30"
→ MO6-1 21" X 21"
- ④ **DETOUR** M4-8 24" X 12"
GLACIAL DRUMLIN TRAIL FMS 36" X 30"
↑ M 6-1 21" X 21"
- ⑤ **END DETOUR** M4-8A 24" X 18"
GLACIAL DRUMLIN TRAIL FMS 36" X 30"

GENERAL NOTES FOR DETOUR SIGNING

THE EXACT LOCATION AND SPACING OF ALL SIGNS AND DEVICES SHALL BE ADJUSTED TO FIT FIELD CONDITIONS AS APPROVED BY THE ENGINEER.

ALL SIGNS INAPPROPRIATE TO THE STATUS OF THE TRAFFIC CONTROL ZONE, INCLUDING PRE-EXISTING SIGNING IN THE VICINITY, SHALL BE COVERED OR REMOVED AS SPECIFIED IN THE PLANS AND/OR AS DIRECTED BY THE ENGINEER.

ALL EXISTING SIGNS THAT NEED TO BE COVERED SHALL BE COVERED WITH A BLANK ORANGE PANEL.

THE ERECTION AND PLACEMENT OF SIGNS SHALL BE IN ACCORDANCE WITH THE MANUAL ON UNIFORM TRAFFIC CONTROL DEVICES.

DETOUR SIGNING SHALL BE PERFORMED BY THE CONTRACTOR.

- LEGEND**
- ↑ PROPOSED SIGN AND SIGN SUPPORT
 - DETOUR ROUTE
 - ↑ TYPE II BARRICADE WITH ATTACHED SIGN AND WARNING LIGHT TYPE A
 - ⊙ SEE SIGN DETAILS ABOVE
 - ⊠ TRAFFIC CONTROL SIGNS FIXED MESSAGE SEE TRAFFIC CONTROL PLANS FOR DETAILS
 - ▨ WORK ZONE