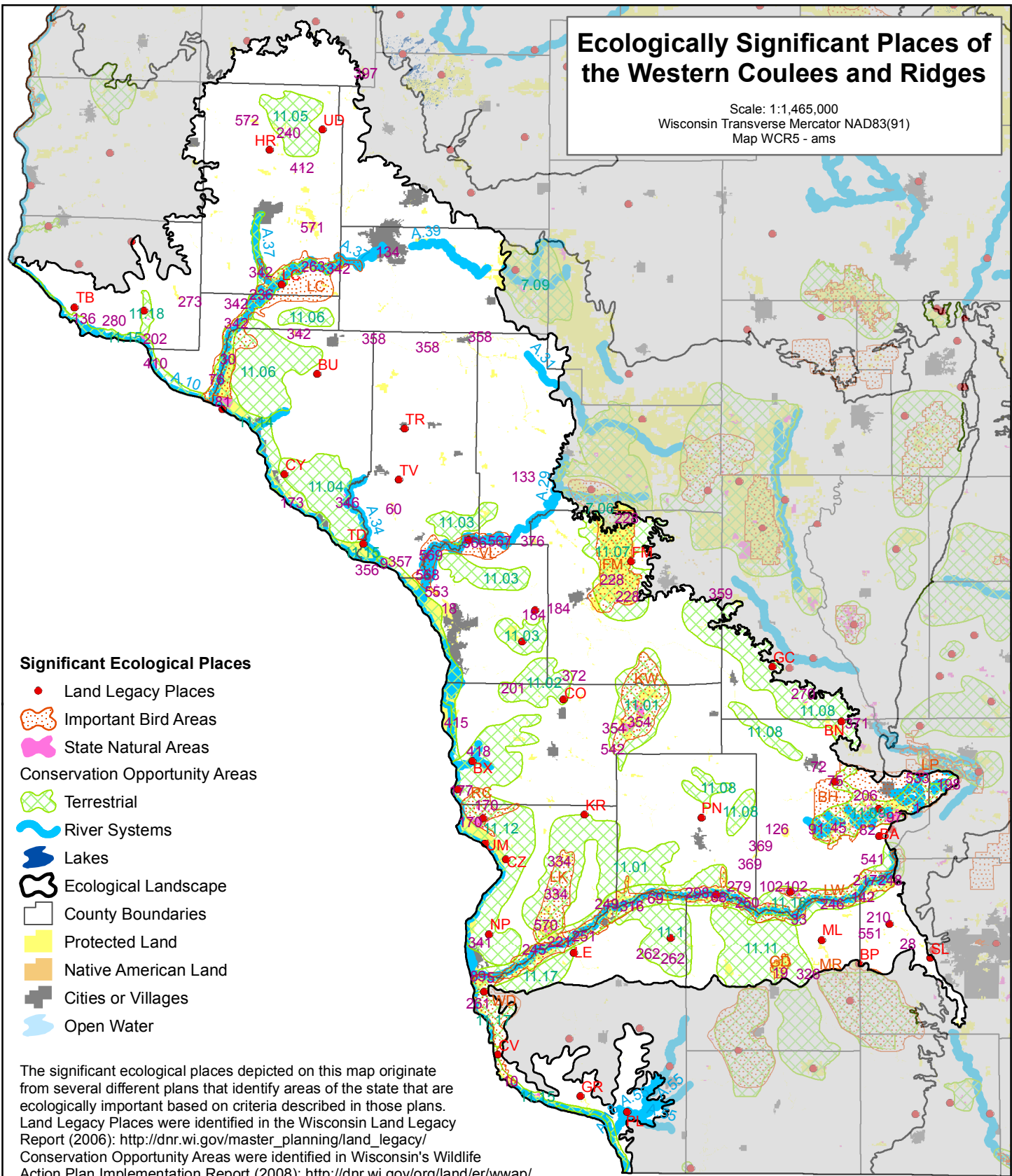


Ecologically Significant Places of the Western Coulees and Ridges

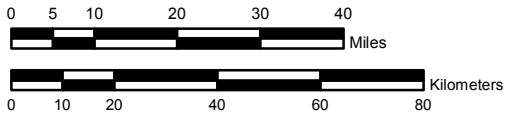
Scale: 1:1,465,000
 Wisconsin Transverse Mercator NAD83(91)
 Map WCR5 - ams



Significant Ecological Places

- Land Legacy Places
- Important Bird Areas
- State Natural Areas
- Conservation Opportunity Areas
- Terrestrial
- River Systems
- Lakes
- Ecological Landscape
- County Boundaries
- Protected Land
- Native American Land
- Cities or Villages
- Open Water

The significant ecological places depicted on this map originate from several different plans that identify areas of the state that are ecologically important based on criteria described in those plans. Land Legacy Places were identified in the Wisconsin Land Legacy Report (2006): http://dnr.wi.gov/master_planning/land_legacy/ Conservation Opportunity Areas were identified in Wisconsin's Wildlife Action Plan Implementation Report (2008): <http://dnr.wi.gov/org/land/er/wwap/> Important Bird Areas were identified in Important Bird Areas of Wisconsin (2007): <http://www.wisconsinbirds.org/iba/IBA-book.htm> Protected Lands include most State, Federal and County ownership or easements as well as lands owned or managed by land trusts and NGOs such as The Nature Conservancy and others.



Ecologically Significant Places in the Western Coulees and Ridges Ecological Landscape

Conservation Opportunity Areas (COAs)

COA #	Terrestrial COA Name
7.06	Robinson Creek
7.09	Eau Claire and Clark Barrens Restoration
11.01	Lower Kickapoo
11.02	Coon Creek Mesic
11.03	Coulee Forests
11.04	Buffalo County Oak Forest
11.05	Otter Creek Barrens
11.06	Lower Chippewa Savannas
11.07	Fort McCoy Barrens and Oak Savanna
11.08	Green Sand Cuesta
11.09	Baraboo Hills and North Range
11.10	Snow Bottom
11.11	Dodgeville Wyoming Oak Woodlands/Savanna
11.12	Rush Creek
11.14	Lower Chippewa Bluffs and Floodplain
11.15	Mississippi Bluffs and Floodplain
11.16	Lower Wisconsin Bluffs and Floodplain
11.17	Millville-Sandy Creek
11.18	Rush River Bluffs and Floodplain

COA #	Aquatic COA Name
A.10	Mississippi River
A.18	Platte River
A.19	Lower Wisconsin River
A.21	Wisconsin-Baraboo Rivers
A.22	Baraboo Hills Streams
A.28	Bad Axe River
A.29	Lower Black River
A.31	Halls Creek
A.34	Trempealeau River
A.35	Buffalo River
A.37	Lower Chippewa River
A.37	Lower Red Cedar River
A.39	Eau Claire River
A.55	Little Platte River & Tributaries

Important Bird Areas (IBAs)

BH	Baraboo Hills
FM	Fort McCoy-Robinson Creek
GD	Governor Dodge SP
KW	Kickapoo-Wildcat
LP	Leopold-Pine Island
LC	Lower Chippewa River
LK	Lower Kickapoo River
LW	Lower Wisconsin River
MR	Military Ridge-York Prairie
RC	Rush Creek Forest-Prairie
VL	Van Loon Bottoms
WD	Wyalusing to Dewey

Land Legacy Places

BA	Badger Army Ammunition Plant
BE	Black Earth Creek
BH	Baraboo Hills
BN	Badlands
BO	Baraboo River
BP	Blue Mound State Park
BR	Black River
BT	Battle Bluff
BU	Buffalo River
BX	Bad Axe River
CE	Coulee Experimental Forest
CO	Coulee Coldwater Riparian Resources
CV	Cassville to Bagley Bluffs
CY	Cochrane City Bluffs
CZ	Copper Creek to Lynxville Hollows
FM	Fort McCoy
GC	Greensand Cuesta
GR	Grant and Rattlesnake Rivers
HR	Hay River
KR	Kickapoo River
LC	Lower Chippewa River and Prairies
LE	Little and Big Green Rivers
LW	Lower Wisconsin River
LX	La Crosse River
ML	Mill Creek
NP	North Prairie Du Chien Savanna
PL	Platte River
PN	Pine River
RR	Rush River
RU	Rush Creek
SL	Shoveler Lakes-Black Earth Trench
SP	Spring Green Prairie
SW	Snow Bottom-Blue River Valley
TB	Trimbelle River
TD	Trempealeau River Delta
TR	Trempealeau River
TV	Thompson Valley Savanna
UD	Upper Red Cedar River
UM	U. Mississippi R. Nat. Fish and Wildlife Ref.
WY	Wyalusing State Park

State Natural Areas (SNAs)

SNA #	SNA Name
1	Parfrey's Glen
5	Wyalusing Hardwood Forest
9	Brady's Bluff Prairie
10	Dewey Heights Prairie
15	Mount Pisgah Hemlock-Hardwoods
18	Midway Railroad Prairie
19	Pine Cliff
27	Devil's Lake Oak Forest
28	New Observatory Woods
30	Tiffany Bottoms
33	Tower Hill Bottoms
44	Durst Rockshelter
45	Pine Hollow
52	Lodde's Mill Bluff
60	Tamarack Creek Bog
68	Avoca Prairie and Savanna
69	Blue River Sand Barrens
72	Cady's Marsh
75	Ableman's Gorge
76	Five-Mile Bluff Prairie
80	Hub City Bog
81	Nelson-Trevino Bottoms
82	Baxter's Hollow
89	Wyalusing Walnut Forest
91	Honey Creek
97	South Bluff/Devil's Nose
98	East Bluff
102	Spring Green Preserve
105	Natural Bridge and Rockshelter
126	Bear Creek Cave
133	Gullickson's Glen
134	Putnam Park
136	Trenton Bluff Prairie
142	Mazomanie Bottoms
170	Rush Creek
173	Whitman Bottoms Floodplain Forest
177	Battle Bluff Prairie
184	La Crosse River Trail Prairies
198	Lost Lake
200	Pewits Nest
201	Coon Creek Cliffs
202	Rush River Delta
205	Morgan Coulee Prairie
206	McGilvra Woods
210	Black Earth Rettenmund Prairie
217	Ferry Bluff
221	Wauzeka Bottoms
222	Eureka Maple Woods
228	Fort McCoy Barrens
236	Nine Mile Island
240	Otter Creek Oak Barrens
245	Adiantum Woods
246	Arena Pines and Sand Barrens
247	Bakken's Pond
248	Mazomanie Oak Barrens
249	Richwood Bottoms

State Natural Areas (SNAs)

SNA #	SNA Name
250	Smith Slough and Sand Prairie
251	Woodman Lake Sand Prairie and Dead Lake
261	Gasner Hollow Prairie
262	Snow Bottom
263	Caryville Savanna
270	Bass Hollow
273	Plum Creek Woods
279	Gotham Jack Pine Barrens
280	Bay City Mine
298	Orion Mussel Bed
316	Blue River Bluffs
326	Ridgeway Pine Relict
334	Hogback Prairie
337	Cassville Bluffs
338	Sugar Creek Bluff
341	Limery Ridge
342	Lower Chippewa River
346	Trempealeau River Meadow
354	Kickapoo Valley Reserve
356	Trempealeau Mountain
357	Great River Trail Prairies
358	Buffalo River Trail Prairies
359	Mill Bluff
369	Bear Creek Sedge Meadow
371	Hulburt Creek Woods
372	Portland Maples
376	Sand Creek Pines
397	New Auburn Sedge Meadow
410	Maiden Rock Bluff
412	Red Cedar River Savanna
415	Bergen Bluffs
418	Romance Prairie
533	Lower Narrows
535	Hemlock Draw
541	Schluckebier Prairie
542	Tunnelville Cliffs
545	Pan Hollow
551	Pleasant Valley Conservancy
553	Holland Sand Prairie
565	North Bend Wet Prairie
566	Half Moon Bottoms
567	Black River Savanna
568	Van Loon Bottoms
569	Van Loon Floodplain Savanna
570	Kickapoo Wild Woods
571	Muddy Creek Sedge Meadow
572	Big Beaver Creek Meadow