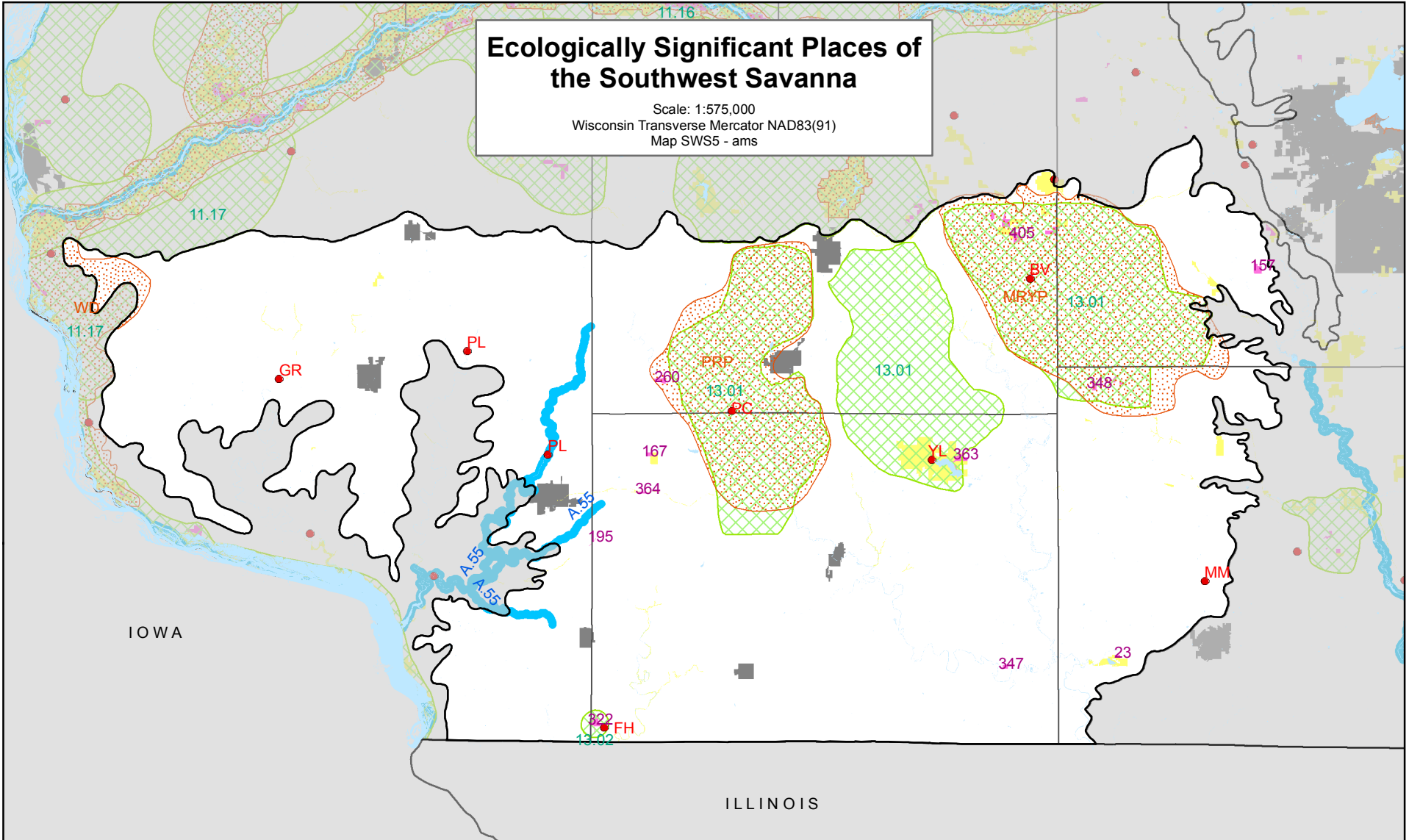


Ecologically Significant Places of the Southwest Savanna

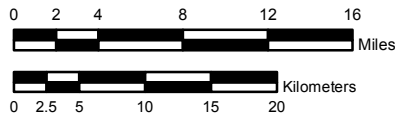
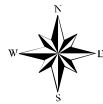
Scale: 1:575,000
 Wisconsin Transverse Mercator NAD83(91)
 Map SWS5 - ams



Significant Ecological Places

- Land Legacy Places
- Important Bird Areas
- State Natural Areas
- Conservation Opportunity Areas
- Terrestrial
- River Systems
- Lakes

- Ecological Landscape
- County Boundaries
- Protected Land
- Native American Land
- Cities or Villages
- Open Water



The significant ecological places depicted on this map originate from several different plans that identify areas of the state that are ecologically important based on criteria described in those plans. Land Legacy Places were identified in the Wisconsin Land Legacy Report (2006): http://dnr.wi.gov/master_planning/land_legacy/ Conservation Opportunity Areas were identified in Wisconsin's Wildlife Action Plan Implementation Report (2008): <http://dnr.wi.gov/org/land/er/wwap/> Important Bird Areas were identified in Important Bird Areas of Wisconsin (2007): <http://www.wisconsinbirds.org/iba/IBA-book.htm> Protected Lands include most State, Federal and County ownership or easements as well as lands owned or managed by land trusts and NGOs such as The Nature Conservancy and others.

Significant Ecological Places in the Southwest Savanna Ecological Landscape

| <u>Conservation Opportunity Areas (COAs)</u> | | <u>State Natural Areas (SNAs)</u> | |
|---|---|--|------------------------|
| COA # | Terrestrial COA Name | SNA # | SNA Name |
| 11.11 | Dodgeville Wyoming Oak Woodlands/Savanna | 23 | Browntown Oak Forest |
| 11.16 | Lower Wisconsin Bluffs and Floodplain | 157 | Olson Oak Woods |
| 11.17 | Millville-Sandy Creek | 167 | Belmont Mound Woods |
| 13.01 | Southwest Grasslands and Streams | 195 | Ipswich Prairie |
| 13.02 | Hardscrabble Prairie | 260 | Pecatonica River Woods |
| | | 322 | Hardscrabble Prairie |
| | | 347 | Weir White Oaks |
| COA # | Aquatic COA Name | 348 | York Prairie |
| A.55 | Little Platte River & Tributaries | 363 | Yellowstone Savanna |
| | | 364 | Belmont Prairie |
| | | 405 | Barneveld Prairie |
| <u>Land Legacy Places</u> | | | |
| BV | Blue Mound-Blanchardville Prairie and Savanna | | |
| FH | Fever River-Hardscrabble Prairie | | |
| GR | Grant and Rattlesnake Rivers | | |
| MM | Monroe-Muralt Prairie | | |
| PC | Pecatonica River and Grasslands | | |
| PL | Platte River | | |
| YL | Yellowstone Lake | | |
| <u>Important Bird Areas</u> | | | |
| MRYP | Military Ridge-York Prairie | | |
| PRP | Pecatonica River Prairie | | |
| WD | Wyalusing to Dewey | | |