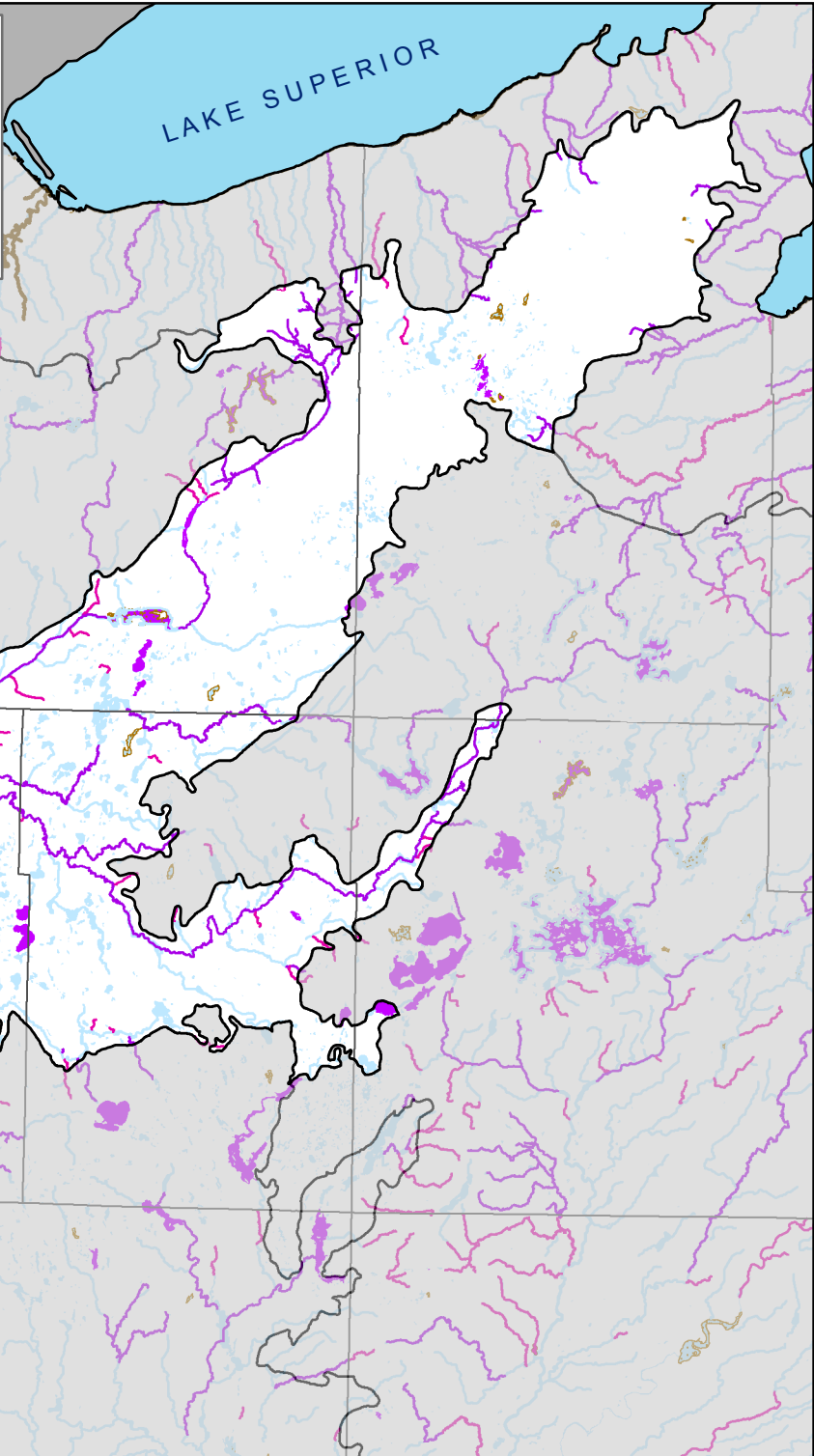


Exceptional and Outstanding Resource Waters and 303(d) Degraded Waters (2010 Update) of the Northwest Sands

Scale: 1:850,000
 Wisconsin Transverse Mercator NAD83(91)
 Map NWS6 - ams



- Ecological Landscape
- County Boundaries
- Open Water

ORW/ERW Waters

- Outstanding Resource Lakes
- Exceptional Resource Lakes
- Outstanding Resource Rivers
- Exceptional Resource Rivers

EPA 303(d) Degraded Waters

- Lakes
- Rivers

Outstanding Resource Water (ORW) is defined as a lake or stream which has excellent water quality, high recreational and aesthetic value, and high quality fishing and is free from point source and nonpoint source pollution (see sec. NR 102.11, Wis. Adm. Code).

Exceptional Resource Water (ERW) is defined as a lake or stream which exhibits the same high quality resource values as outstanding waters, but which may be impacted by point source pollution. For more information on ORWs and ERWs, visit: <http://dnr.wi.gov/> and search 'orw' or 'erw'.

EPA 303(d) list: Water bodies not meeting surface water quality standards of the federal Clean Water Act, as documented by the U.S. Environmental Protection Agency. For more information on Wisconsin's degraded waters, visit: <http://dnr.wi.gov/> keyword 'impaired waters'.

