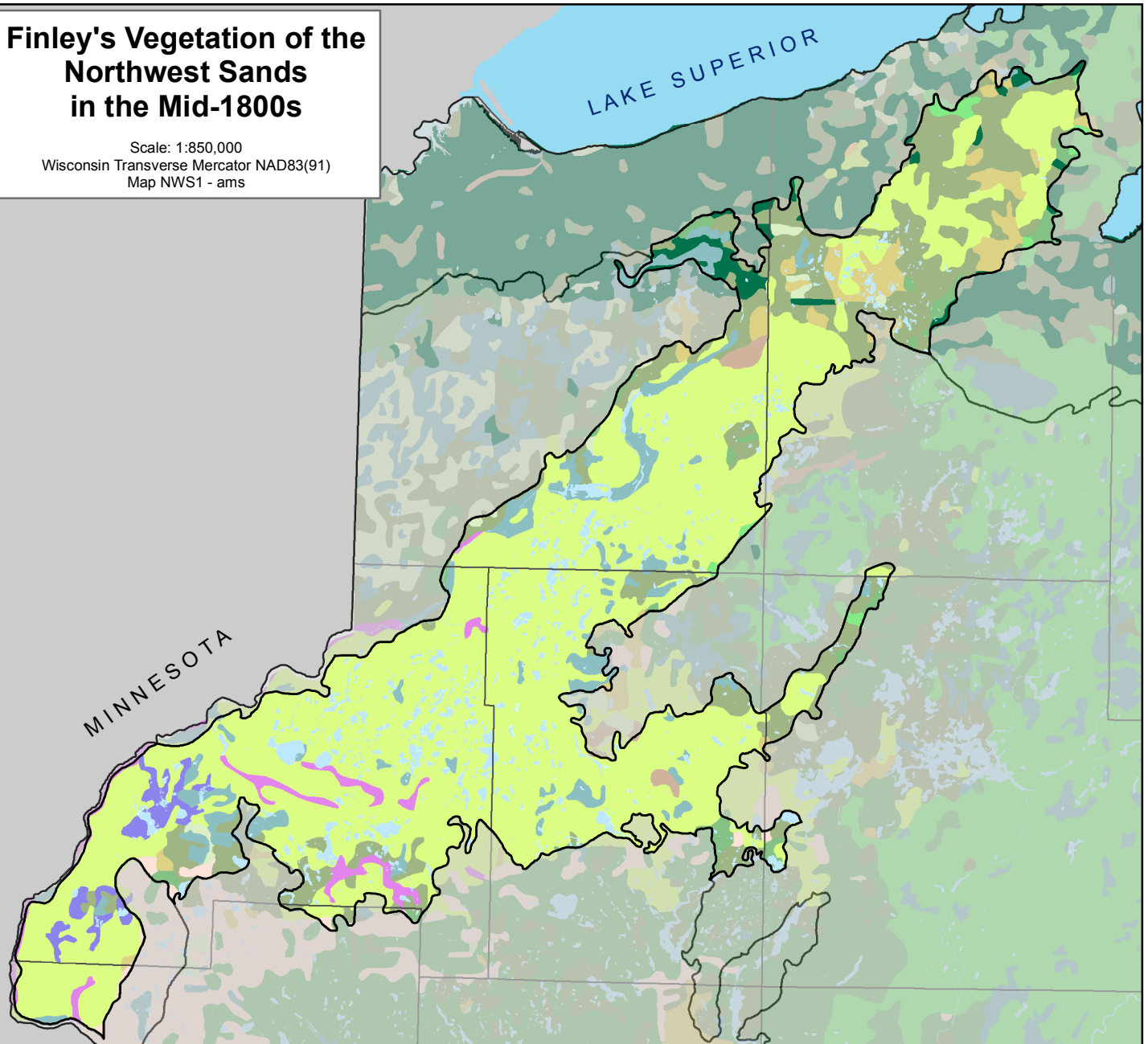


Finley's Vegetation of the Northwest Sands in the Mid-1800s

Scale: 1:850,000
 Wisconsin Transverse Mercator NAD83(91)
 Map NWS1 - ams



- Oak - white oak, black oak, bur oak
- Oak openings - bur oak, white oak, black oak
- Jack pine, scrub (hill's), oak forest and barrens
- White pine red pine
- Aspen, white birch, pine
- White Spruce, fir, tamarack, white cedar, white birch, aspen
- Beech, hemlock, sugar maple, yellow birch, white red pines
- Hemlock, sugar maple, yellow birch, white pine, red pine
- Sugar maple, yellow birch, white pine, red pine
- Beech, sugar maple, basswood, red oak, white oak, black oak
- Sugar maple, basswood, red oak, white oak, black oak
- Swamp conifers - white cedar, black spruce, tamarack, hemlock
- Lowland hardwoods - willow, soft maple, box elder, ash, elm
- Marsh and sedge meadow, wet prairie, lowland shrubs
- Open water

- Prairie
- Brush
- Ecological Landscape
- County Boundaries

Vegetation delineations made by Robert W. Finley - 1976 Professor of Geography Emeritus. University of Wisconsin Center System. Digital data prepared by Maribeth Milner and Steve Ventura, University of Wisconsin - Madison.

More information about this dataset as well as access to this dataset may be found at: <http://dnr.wi.gov/maps/gis/>

