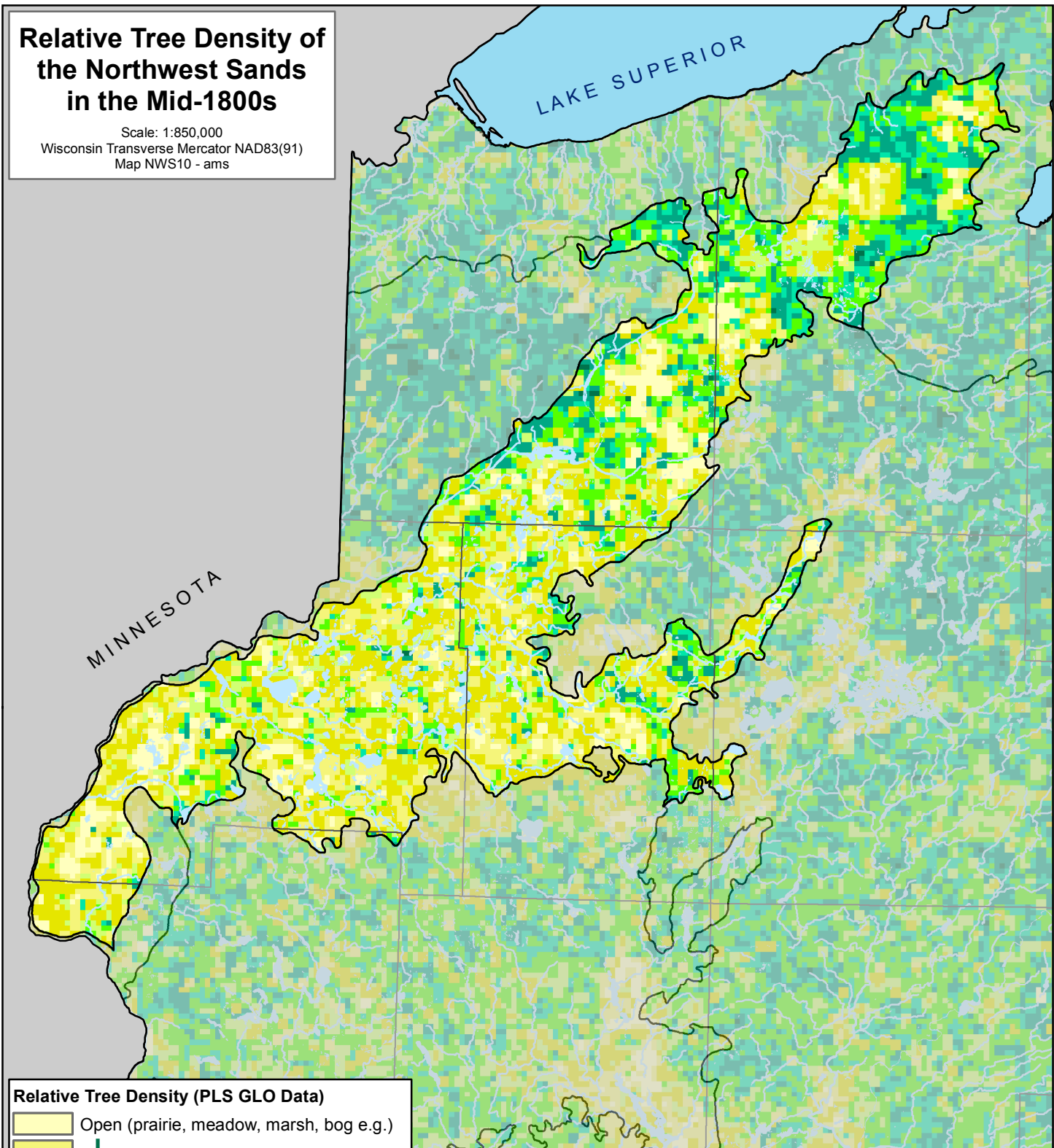


Relative Tree Density of the Northwest Sands in the Mid-1800s

Scale: 1:850,000
 Wisconsin Transverse Mercator NAD83(91)
 Map NWS10 - ams



Relative Tree Density (PLS GLO Data)

	Open (prairie, meadow, marsh, bog e.g.)
	Closed Forest

↓

Ecological Landscape

County Boundaries

These data were compiled by the Forest Landscape Ecology Lab at the University of Wisconsin-Madison (<http://landscape.forest.wisc.edu/>), and are published here courtesy of David J. Mladenoff.

For more information about the General Land Office Public Land Survey, see Schulte L.A. and D.J. Mladenoff 2001. The original Public Land Survey records: their use and limitations in reconstructing presettlement vegetation. *J. Forestry* 99(10) 5-10.

