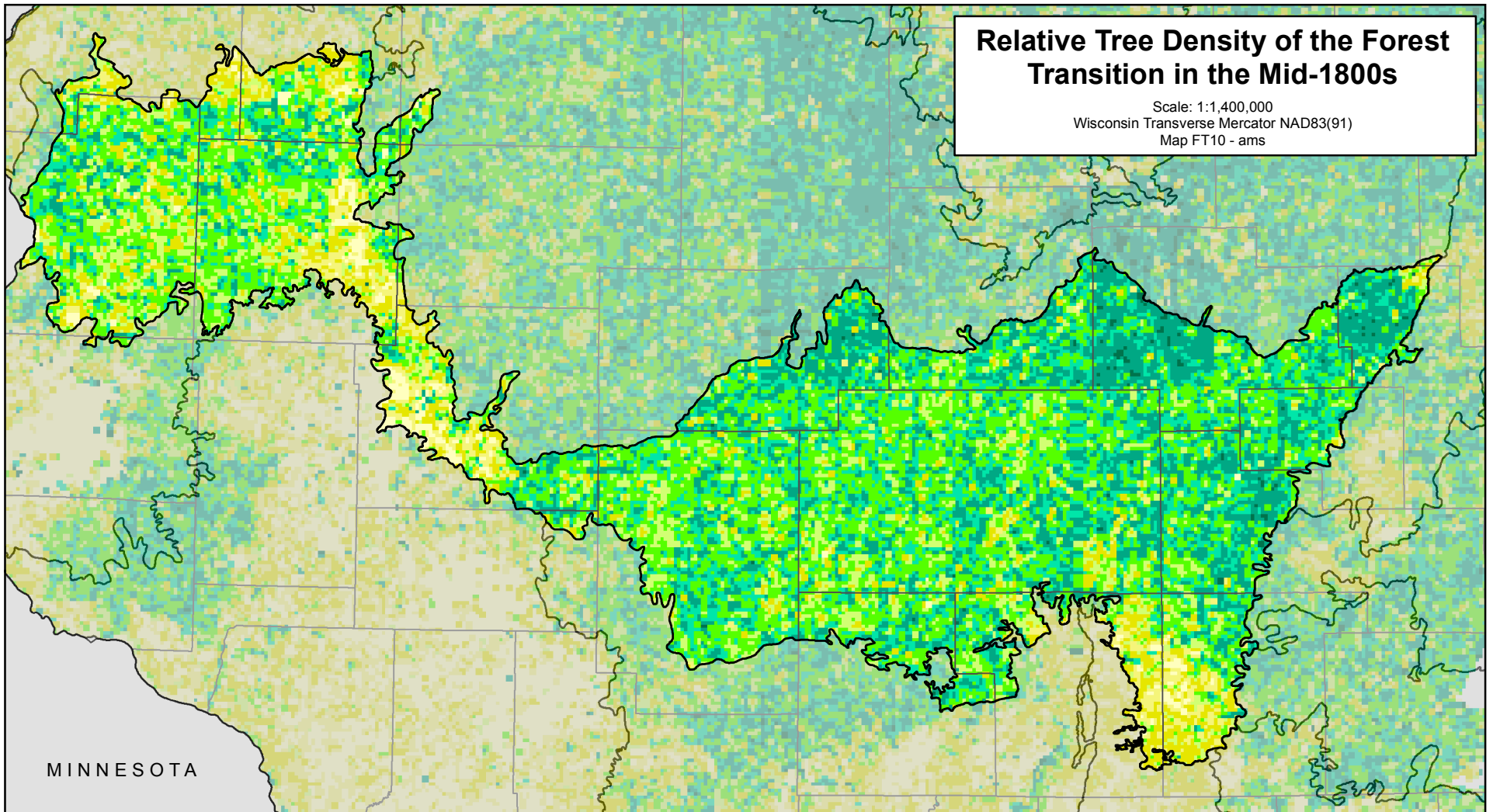





# Relative Tree Density of the Forest Transition in the Mid-1800s


Scale: 1:1,400,000  
 Wisconsin Transverse Mercator NAD83(91)  
 Map FT10 - ams





 Ecological Landscape


 County Boundaries


 Open (prairie, meadow, marsh, bog e.g.)

 ↓

 ↓

 ↓

 ↓

 Closed Forest

These data were compiled by the Forest Landscape Ecology Lab at the University of Wisconsin - Madison (<http://landscape.forest.wisc.edu/>), and are published here courtesy of David J. Mladenoff.

For more information about the General Land Office Public Land Survey, see Schulte L.A. and D.J. Mladenoff 2001. The original Public Land Survey records: their use and limitations in reconstructing presettlement vegetation. *J. Forestry* 99(10) 5-10.

