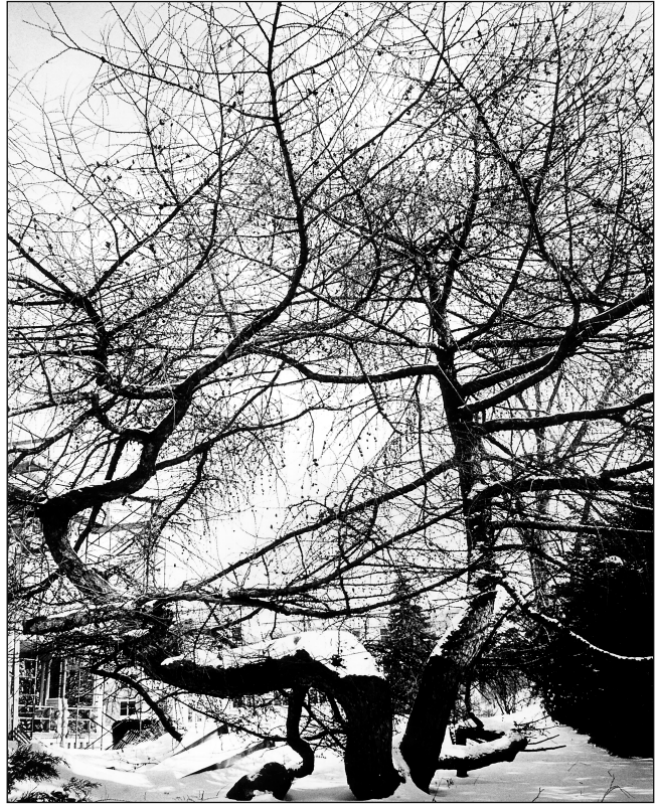


The Geotropic Goff Larch

Madison

While he was president of the University of Wisconsin–Madison, and until he died in 1981, E. B. Fred was fond of a large old larch tree that, strangely, bent its branches down instead of up. The European conifer is at 10 Babcock Drive, traditional home of deans of the College of Agriculture.

The larch was brought from Door County when it was only two feet tall, in 1899, and was dedicated to Emmett S. Goff, UW professor of horticulture. Landscape architects have tried many times to get cuttings from the larch to grow in the same way as the parent tree, with branches pointing down. The cuttings refuse, preferring, apparently, to grow normally. No one knows why.



Geotropic Goff Larch

B-Wolfgang Hoffmann (1982)