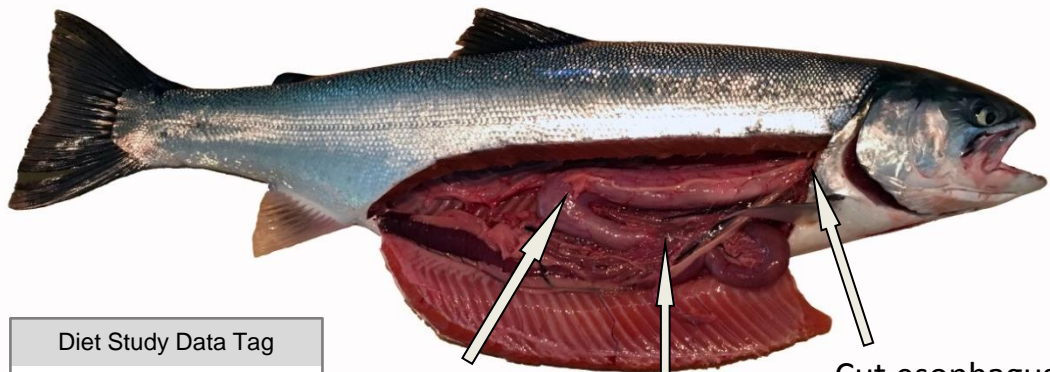


# Huron-Michigan Diet Study

**WANTED!** Lake trout, steelhead, brown trout, Chinook salmon, coho salmon, Atlantic salmon and walleye stomachs from Lake Michigan and Lake Huron.

**REASON:** Researchers are trying to better understand where and when these predatory fish are eating gobies, alewife, smelt, and other food items in Lake Huron and Lake Michigan.



## Diet Study Data Tag

Date caught: \_\_\_\_\_

Port fished: \_\_\_\_\_

Species: \_\_\_\_\_

Length (to ¼ in.): \_\_\_\_\_

Adipose Fin Clip (Yes/No): \_\_\_\_\_

Depth of Water (feet): \_\_\_\_\_

DO NOT  
cut bend in  
the stomach

Cut intestine  
where it exits  
stomach

Cut esophagus  
where it enters  
stomach

- 1 – Decide if you will collect stomachs from this fishing trip.
- 2 – Remove stomachs from ALL fish of each species that you are collecting.
- 3 – Place stomach and ALL contents into plastic bag with data tag.
- 4 – Freeze or ice stomachs immediately and deposit in freezer at drop site.

Data tags, list of freezer drop sites, video, and full instructions at: [MichiganSeaGrant.org/diet](http://MichiganSeaGrant.org/diet)

MICHIGAN STATE  
UNIVERSITY



MICHU 17-705