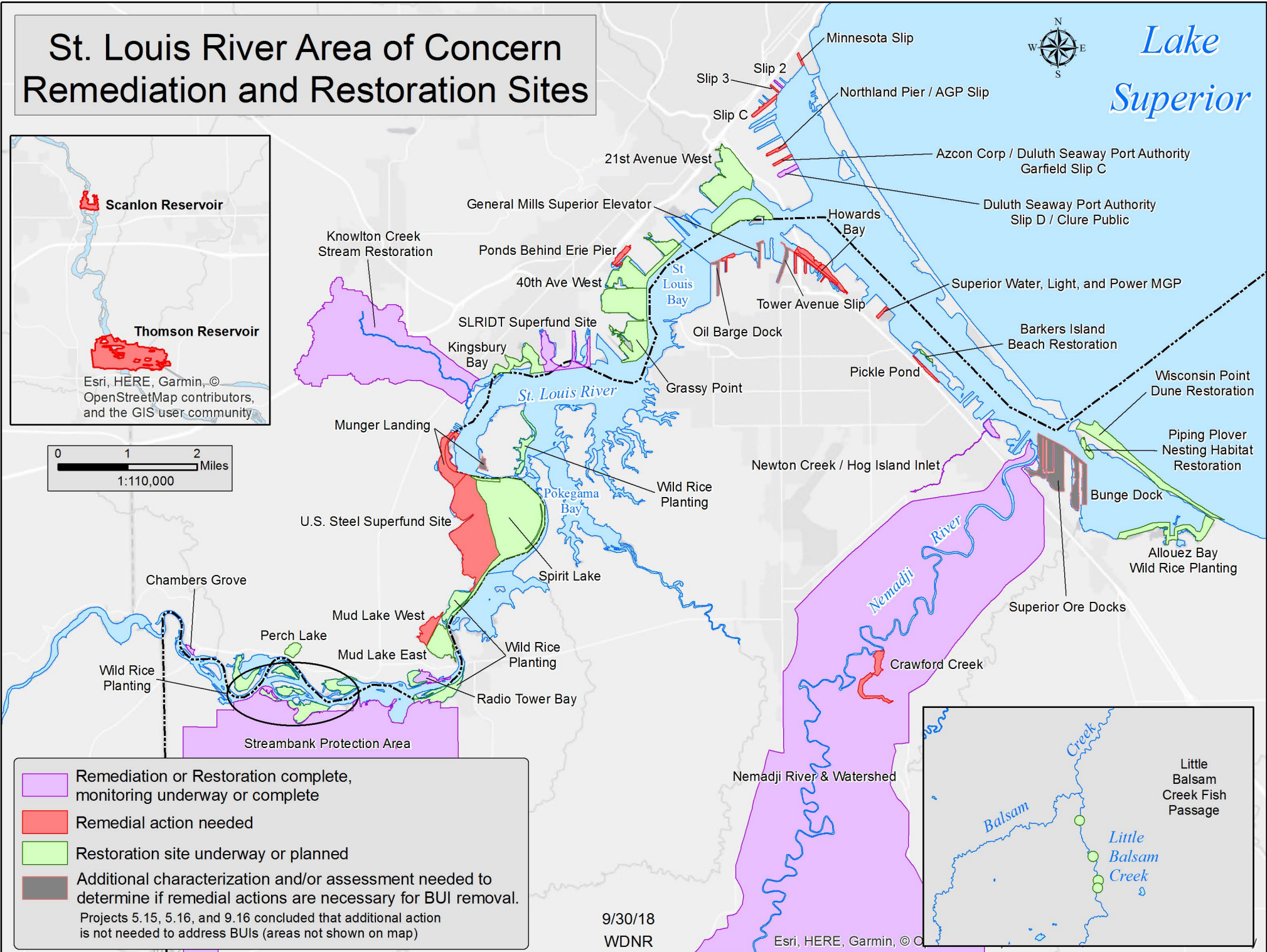
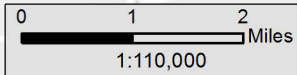
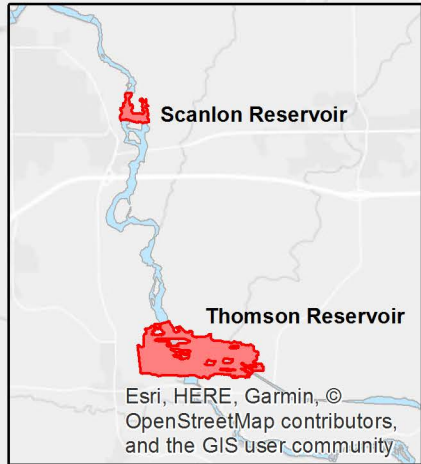


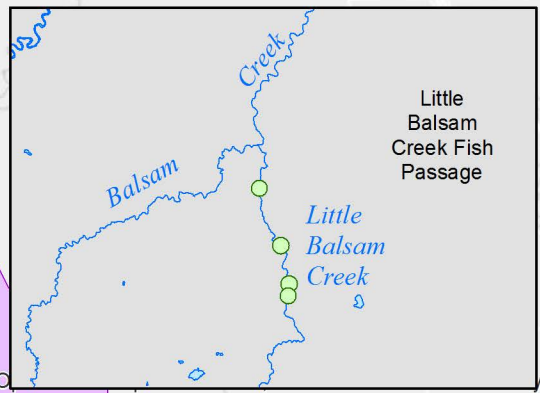
St. Louis River Area of Concern Remediation and Restoration Sites

Lake Superior



Remediation or Restoration complete, monitoring underway or complete
 Remedial action needed
 Restoration site underway or planned
 Additional characterization and/or assessment needed to determine if remedial actions are necessary for BUI removal.
 Projects 5.15, 5.16, and 9.16 concluded that additional action is not needed to address BUIs (areas not shown on map)

9/30/18
WDNR



Esri, HERE, Garmin, ©