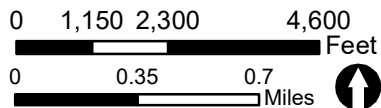
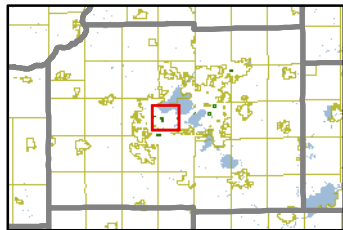


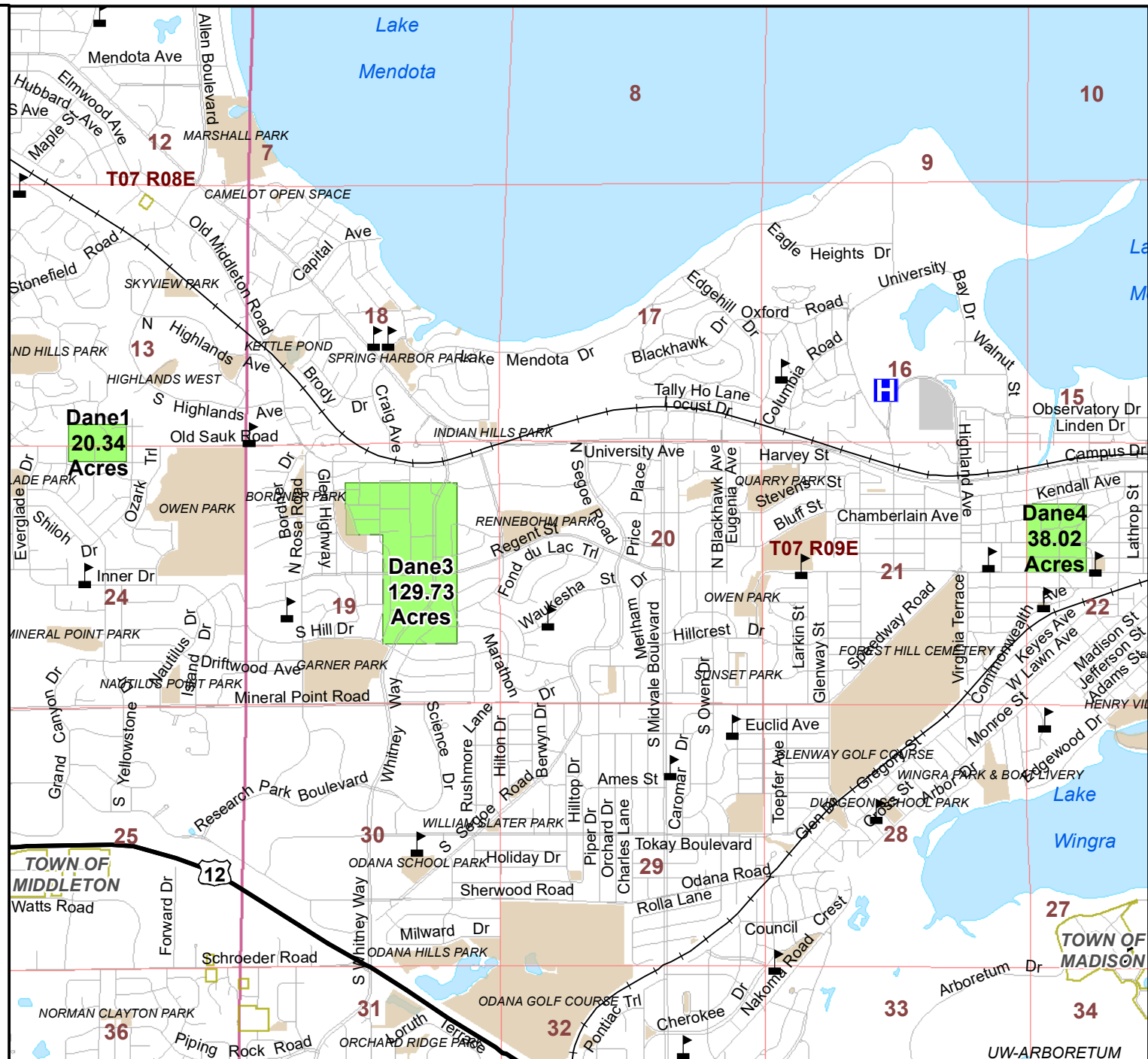
# GYPSY MOTH SUPPRESSION PROGRAM

## Dane County Treatment Area 1, 3 & 4

-  Hospital
-  School
-  Railroad
-  US Highway
-  Local Road
-  Open Water
-  PLSS Township
-  Park
-  Treatment Area
-  PLSS Section



WI Dept. of Natural Resources  
Division of Forestry  
March 2018



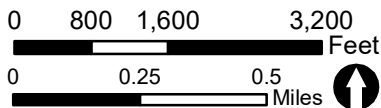
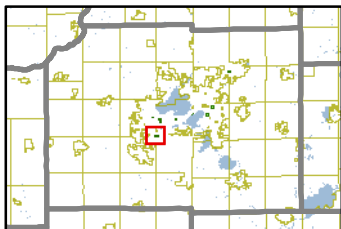
DISCLAIMER: The data shown on this map have been obtained from various sources, and are of varying age, reliability, and resolution. This map is not an authoritative source of information about legal land ownership or public access. More detailed delineations will be produced at the department's discretion as improved information becomes available. Source of Imagery: Wisconsin Regional Orthophoto Consortium (WROC) 2010, 18" resolution.

# GYPSY MOTH SUPPRESSION PROGRAM

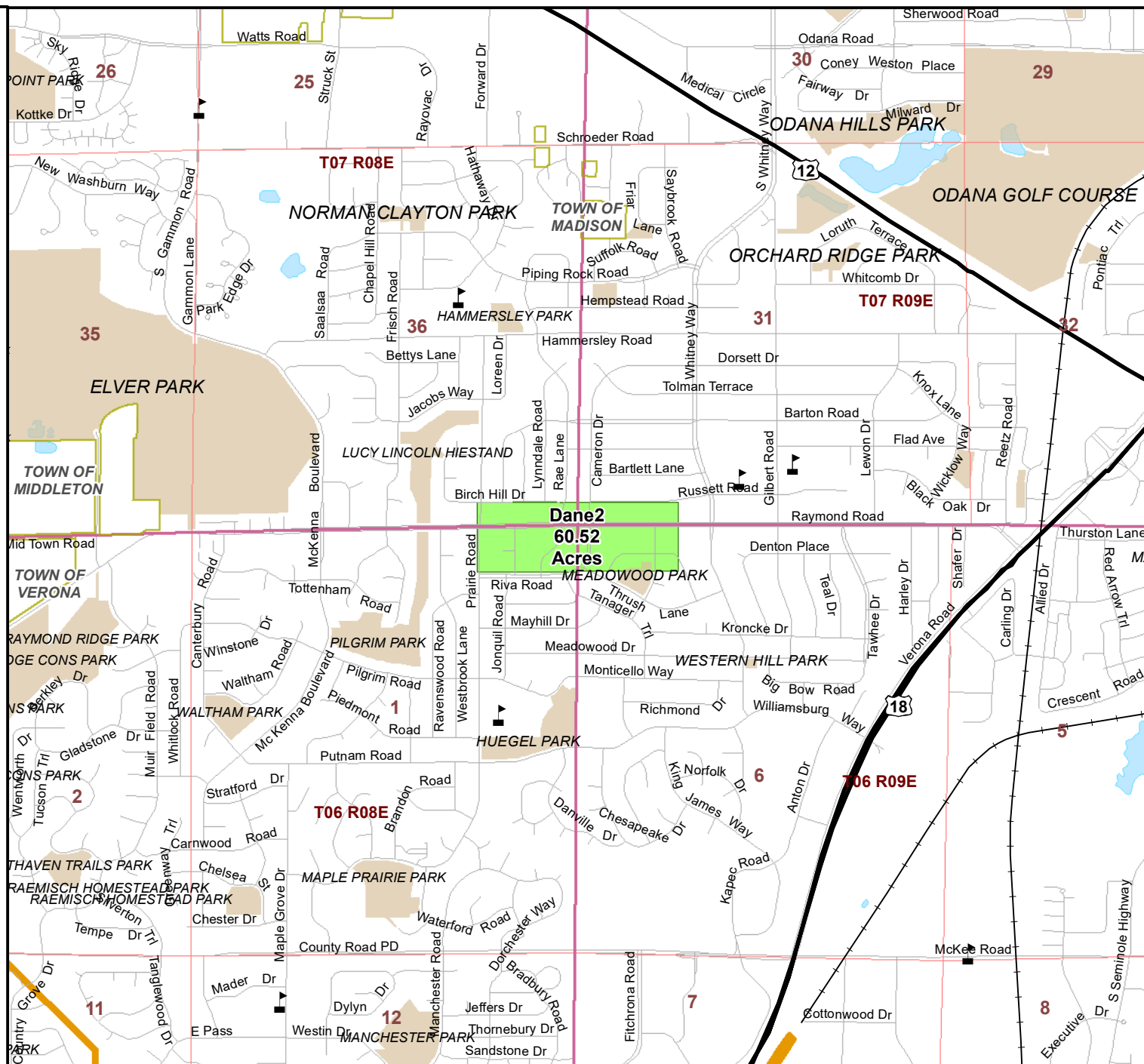
## Dane County Treatment Area

2

-  School
-  Railroad
-  US Highway
-  Local Road
-  Open Water
-  PLSS Township
-  Park
-  Treatment Area
-  PLSS Section



WI Dept. of Natural Resources  
Division of Forestry  
March 2018



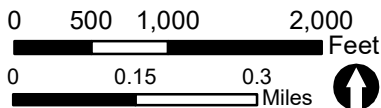
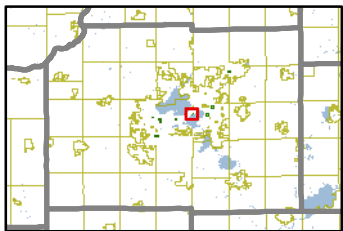
DISCLAIMER: The data shown on this map have been obtained from various sources, and are of varying age, reliability, and resolution. This map is not an authoritative source of information about legal land ownership or public access. More detailed delineations will be produced at the department's discretion as improved information becomes available. Source of Imagery: Wisconsin Regional Orthophoto Consortium (WROC) 2010, 18" resolution.

# GYPSY MOTH SUPPRESSION PROGRAM

## Dane County Treatment Area

5

-  School
-  Railroad
-  US Highway
-  State Highway
-  Local Road
-  Open Water
-  PLSS Township
-  Park
-  Treatment Area
-  PLSS Section



WI Dept. of Natural Resources  
Division of Forestry  
March 2018



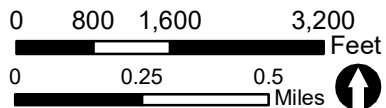
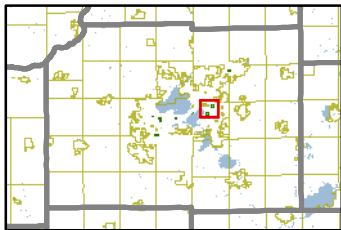
DISCLAIMER: The data shown on this map have been obtained from various sources, and are of varying age, reliability, and resolution. This map is not an authoritative source of information about legal land ownership or public access. More detailed delineations will be produced at the department's discretion as improved information becomes available. Source of Imagery: Wisconsin Regional Orthophoto Consortium (WROC) 2010, 18" resolution.



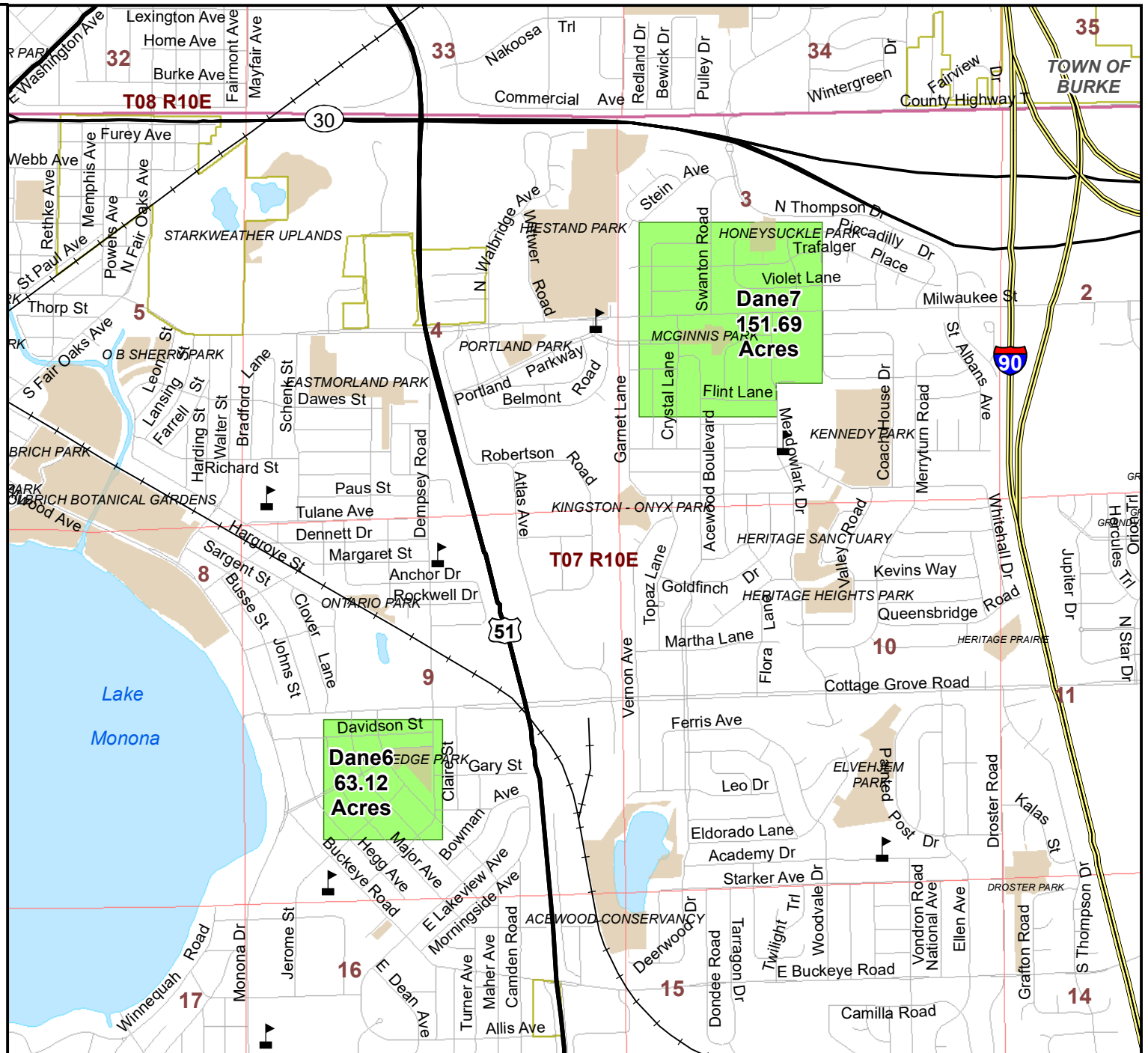
# GYPSY MOTH SUPPRESSION PROGRAM

## Dane County Treatment Area 6 & 7

-  School
-  Railroad
-  Interstate
-  US Highway
-  State Highway
-  Local Road
-  Open Water
-  PLSS Township
-  Park
-  Treatment Area
-  PLSS Section



WI Dept. of Natural Resources  
Division of Forestry  
March 2018



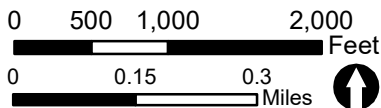
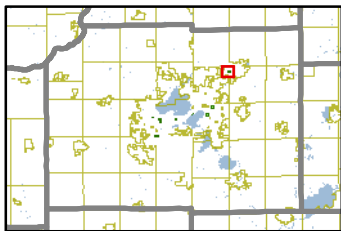
DISCLAIMER: The data shown on this map have been obtained from various sources, and are of varying age, reliability, and resolution. This map is not an authoritative source of information about legal land ownership or public access. More detailed delineations will be produced at the department's discretion as improved information becomes available. Source of Imagery: Wisconsin Regional Orthophoto Consortium (WROC) 2010, 18" resolution.

# GYPSY MOTH SUPPRESSION PROGRAM

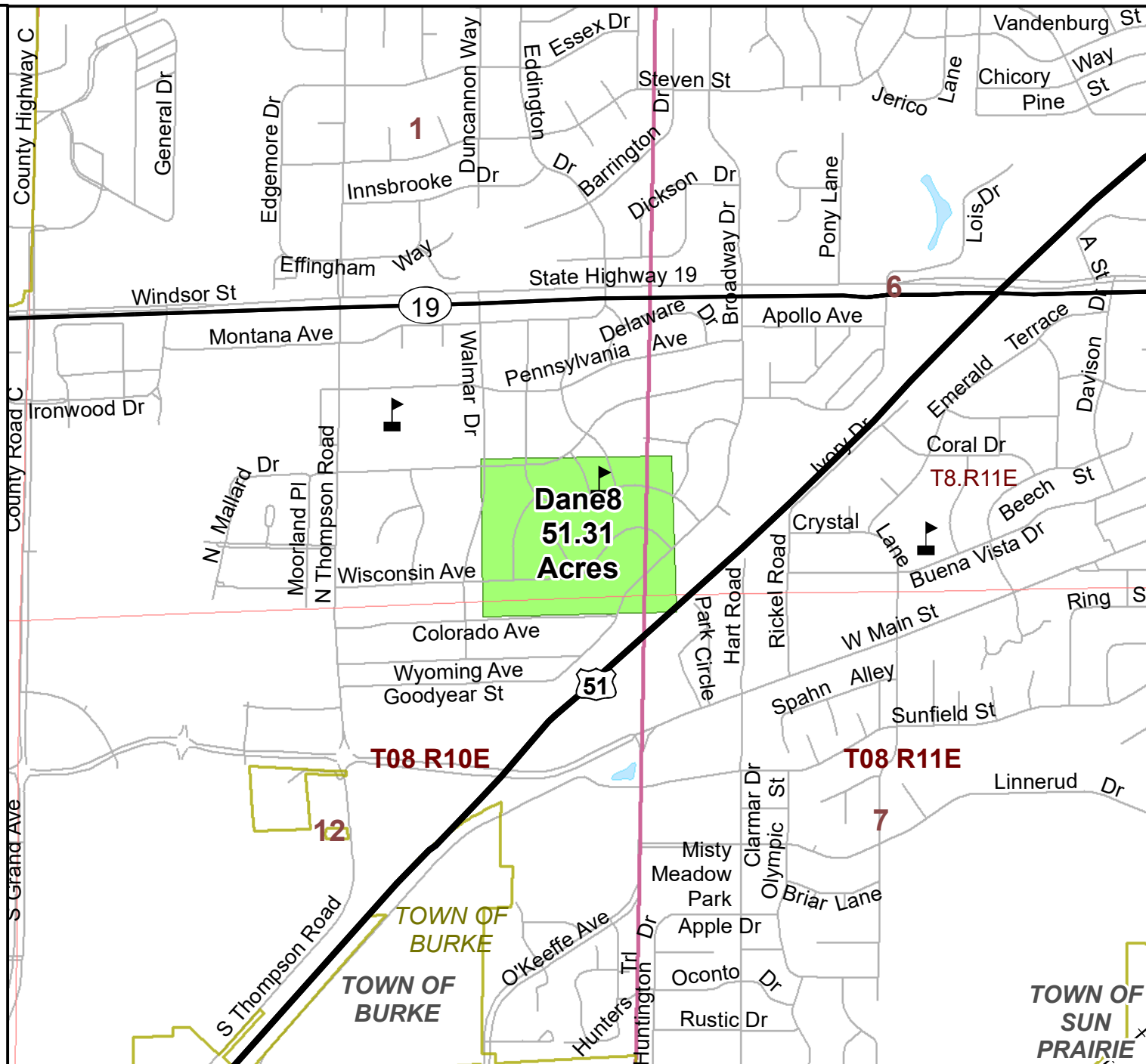
## Dane County Treatment Area

8

-  School
-  Railroad
-  US Highway
-  State Highway
-  Local Road
-  Open Water
-  PLSS Township
-  Treatment Area
-  PLSS Section



WI Dept. of Natural Resources  
Division of Forestry  
March 2018



DISCLAIMER: The data shown on this map have been obtained from various sources, and are of varying age, reliability, and resolution. This map is not an authoritative source of information about legal land ownership or public access. More detailed delineations will be produced at the department's discretion as improved information becomes available. Source of Imagery: Wisconsin Regional Orthophoto Consortium (WROC) 2010, 18" resolution.