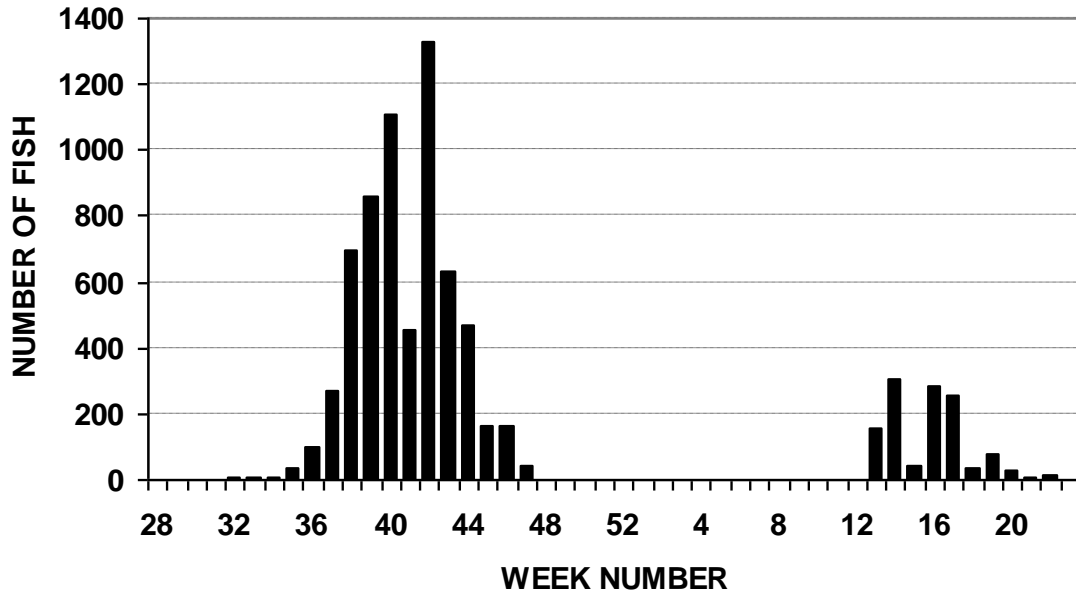


2007 - 2008 Brule Steelhead Run



The graph above displays the 2007 – 2008 steelhead passage on a weekly basis at the Brule River lamprey barrier/fishway. Peak movement occurred during the third week of October in the fall (week 42) and the first week of April in the spring (week 14).

The table below displays recent historical run totals. A combined fall and spring total of 7,560 steelhead ascended including 7,282 wild fish and 278 fin-clipped hatchery fish. The stocked portion is diminishing quickly as the stocking experiment ending in 2001 winds down. The wild portion of the run has averaged 6,176 fish over the last twenty one years of observation with a high in 2005 - 2006 of 8,759 and a low in 1996 - 1997 of 3,005.

	FALL	SPRING	TOTAL	STOCKED PORTION
2001-02	<i>5484</i>	<i>1124</i>	<i>6608</i>	<i>1118</i>
2002-03	<i>7448</i>	<i>2035</i>	<i>9483</i>	<i>1985</i>
2003-04	<i>8251</i>	<i>1997</i>	<i>10248</i>	<i>2026</i>
2004-05	<i>7635</i>	<i>1445</i>	<i>9080</i>	<i>1698</i>
2005-06	<i>9260</i>	<i>990</i>	<i>10250</i>	<i>1491</i>
2006-07	<i>7290</i>	<i>1582</i>	<i>8872</i>	<i>710</i>
2007-08	<i>6345</i>	<i>1215</i>	<i>7560</i>	<i>278</i>