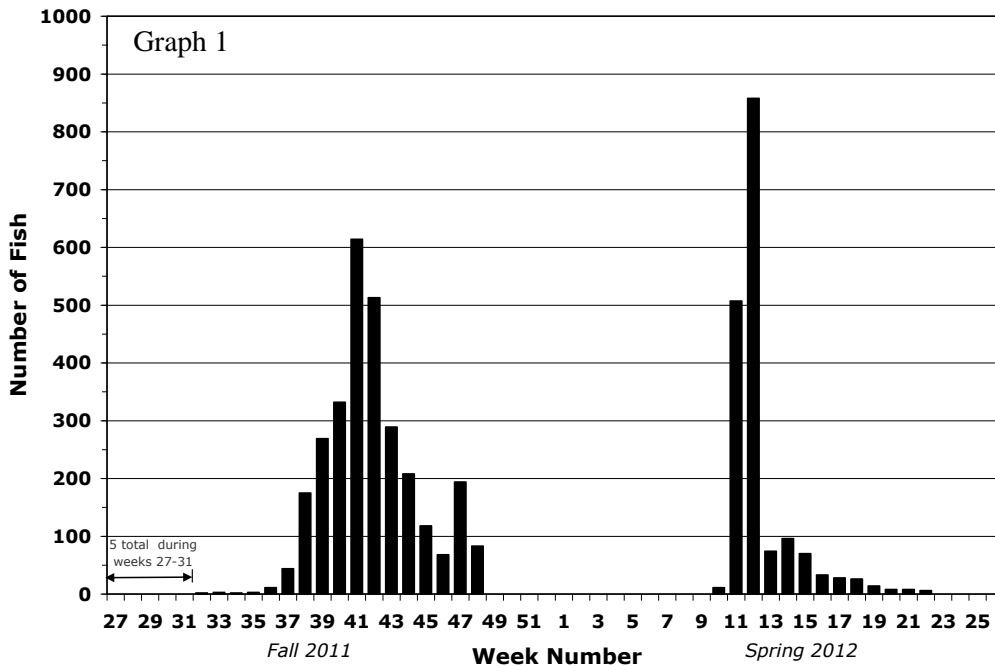
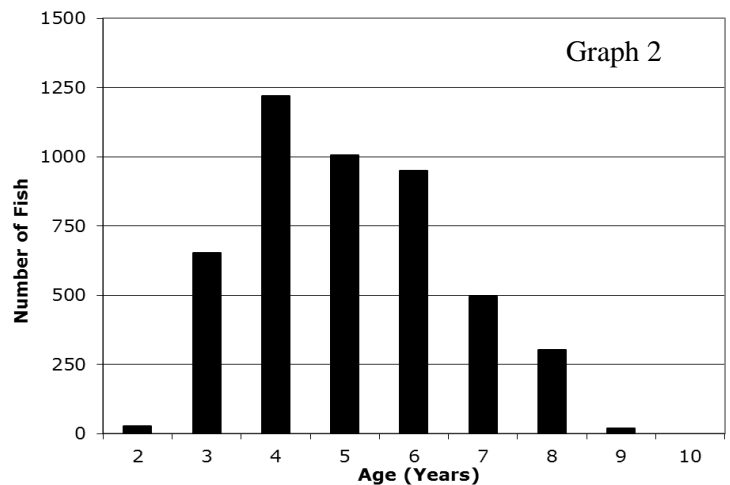


2011-2012 BRULE RIVER STEELHEAD RUN



Graph 1 (at left) shows the 2011-2012 weekly steelhead passage at the Brule River lamprey barrier/fishway. The fall peak occurred during the second week of October (week 41) and the spring peak occurred during the third week of March (week 12). The peak of the spring run had the highest number of fish in any given individual week on record, quite possibly triggered by dramatic, early spring warm air and water temperatures.

Graph 2 (at right) shows nearly two-thirds of all the fish that ascended during fall and spring were four, five, and six-year-olds. The three-year-olds outnumbered the seven-year-olds, which indicates an overall younger wild population. The youth of the fishery was also evident by the number of fish that were of sub-legal length. Nearly three-fourths of all fish in the run measured from 18.5 to 25.5 inches, but approximately one-half of the run ranged from 22.5 to 25.5 inches long.



The table below shows the run totals from 2005 through 2012. As previously noted, 4,672 steelhead ascended the barrier/fishway: 2,933 in the fall and 1,739 in the spring. This was the second straight year since the conclusion of our wild steelhead stocking experiment in 2001 that no hatchery origin fish were represented.

YEAR	Number (Fall 2011)	Number (Spring 2012)	Total (Year)	Wild Portion
2005-06	9260	990	10250	8759
2006-07	7290	1582	8872	8162
2007-08	6345	1215	7560	7282
2008-09	6640	1096	7736	7599
2009-10	8130	761	8891	8795
2010-11	6488	1584	8072	8072
2011-12	2933	1739	4672	4672