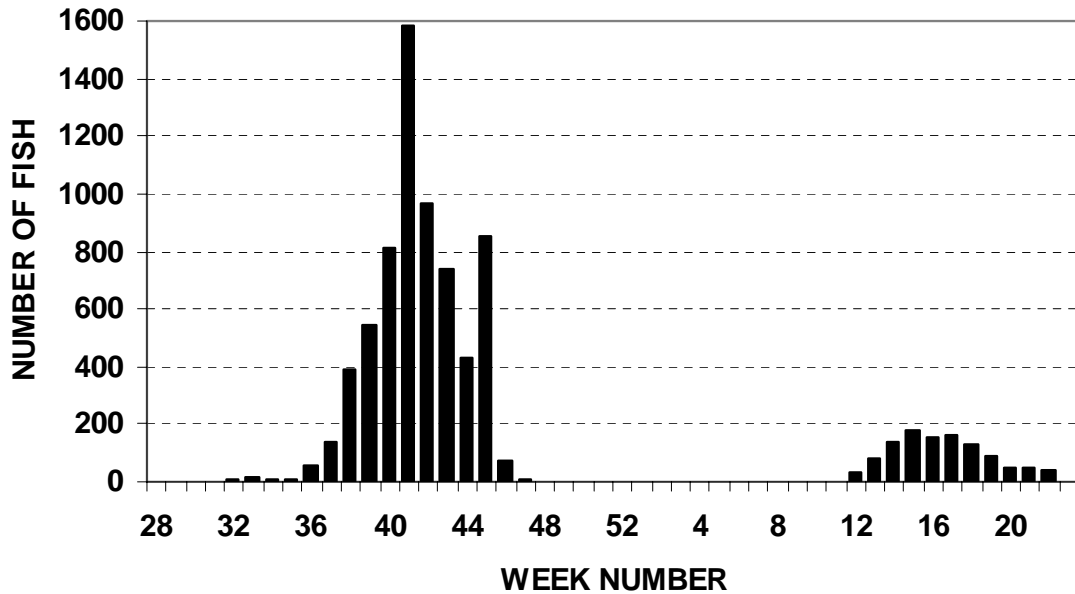


2008 - 2009 Brule Steelhead Run



The graph above displays the 2008 – 2009 steelhead passage on a weekly basis at the Brule River lamprey barrier/fishway. Peak movement occurred during the second week of October in the fall (week 41) and the second week of April in the spring (week 15).

The table below displays recent historical run totals. A combined fall and spring steelhead total of 7,736 ascending includes 7,599 wild fish and 137 fin-clipped hatchery fish. The wild portion of the run has averaged 6,241 fish over the last twenty two years of observation with a high in 2005 - 2006 of 8,759 and a low in 1996 - 1997 of 3,005. The stocked portion is diminishing quickly as the stocking experiment ending in 2001 winds down. We expect that steelhead run numbers will drop in the next few years as a couple of smaller year classes move through the fishery.

	FALL	SPRING	TOTAL	WILD PORTION
2002-03	<i>7448</i>	<i>2035</i>	<i>9483</i>	<i>7498</i>
2003-04	<i>8251</i>	<i>1997</i>	<i>10248</i>	<i>8222</i>
2004-05	<i>7635</i>	<i>1445</i>	<i>9080</i>	<i>7382</i>
2005-06	<i>9260</i>	<i>990</i>	<i>10250</i>	<i>8759</i>
2006-07	<i>7290</i>	<i>1582</i>	<i>8872</i>	<i>8162</i>
2007-08	<i>6345</i>	<i>1215</i>	<i>7560</i>	<i>7282</i>
2008-09	<i>6640</i>	<i>1096</i>	<i>7736</i>	<i>7599</i>