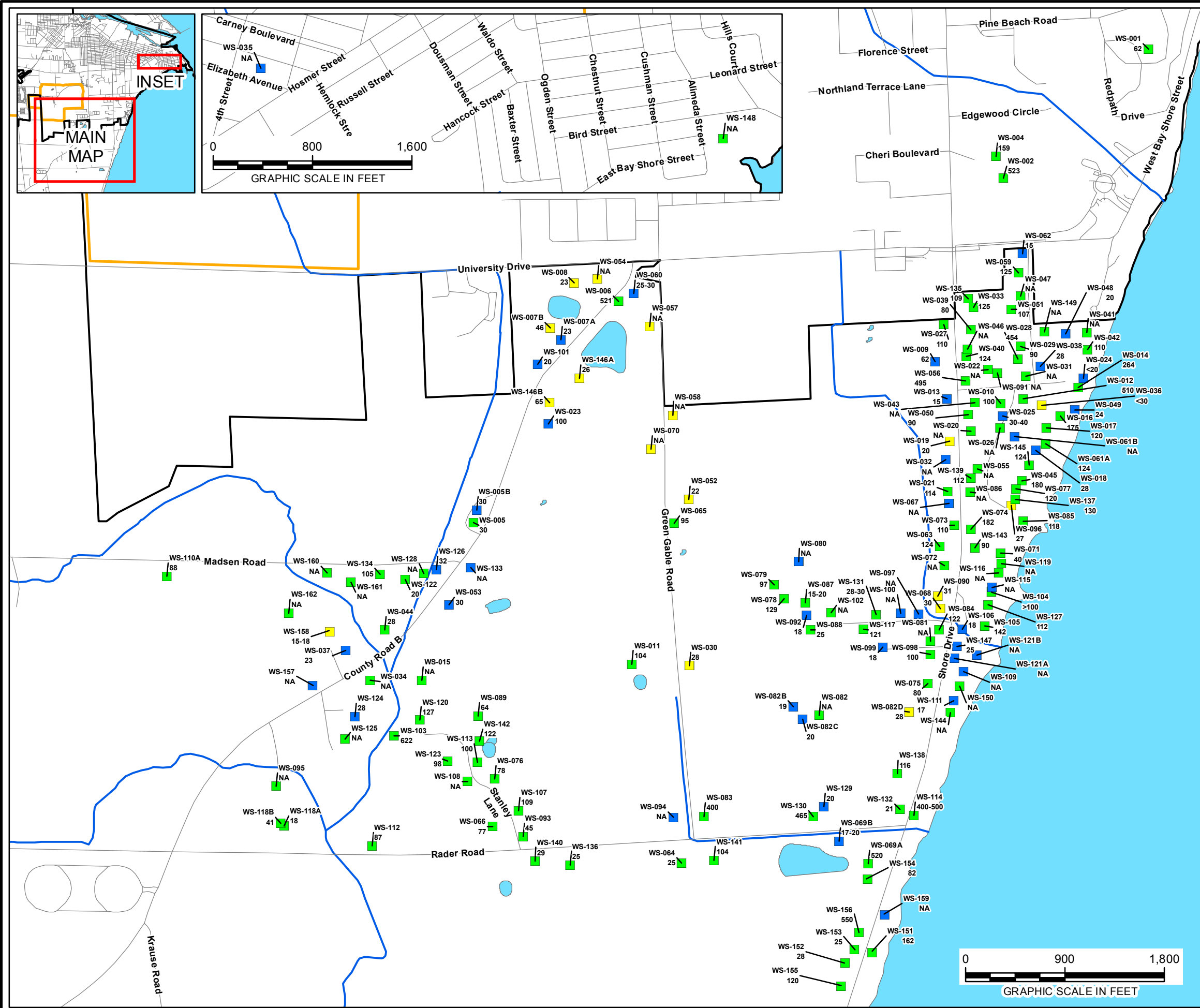


City: Minneapolis/Citrix D:\Group: IMDVC Created By: Last Saved By: msmiller
 TYCO Marinette, WI
 Z:\GIS\Projects_ENVTYCO_Marinette_WI\IMXD\2019-05\WaterWells_Highest.mxd 5/15/2019 11:53:39 AM



LEGEND:

DRINKING WATER WELL LOCATION

- PFOA AND/OR PFOS BELOW REPORTING LIMIT
- PFOA AND/OR PFOS DETECTION ABOVE HAL
- PFOA AND/OR PFOS DETECTION BELOW HAL
- APPROXIMATE SITE PROPERTY BOUNDARY
- APPROXIMATE MARINETTE CITY BOUNDARY
- ROAD
- DITCH/STREAM
- WATERBODY

WS-049 - LOCATION NAME
24 - WELL DEPTH

YELLOW SHADOWING PFOA DETECTION ABOVE HAL

BLUE SHADOWING PFOA DETECTION BELOW HAL

GREEN SHADOWING PFOA NOT DETECTED

VAP-08 - LOCATION NAME
42.3 - PFOA CONCENTRATION IN ng/L
(8-12) - VAP SAMPLE DEPTH INTERVAL IN FEET

NOTES:

1. THE DATA REFLECTED IS THE HIGHEST VALUE DETECTED FROM THE VARIOUS ANALYSES.
2. WELL LOCATIONS ARE APPROXIMATE.

Legend Modified by Dept of Natural Resources

TYCO FIRE PRODUCTS LP
MARINETTE, WISCONSIN

**DRINKING WATER WELL LOCATIONS
WINTER 2019**