

Stakeholder Preliminary Input Meeting – Chapter NR 811 Rule Revisions

Subchapters I, VI, VII, VIII, IX, X, XI, and XII

April 26, 2022

Meeting Outline

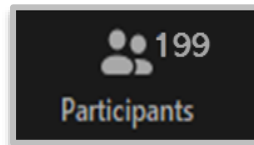
- Meeting Logistics
- Ch. NR 811 Applicability
- Stakeholder Input and Department Proposed Revisions
 - Subchapter I – Submission of Plans
 - Subchapter VI – Chemical Addition
 - Subchapter VII – Treatment
 - Subchapter VIII – Hydro-Pneumatic Tanks
 - Subchapter IX – Storage Facilities
 - Subchapter X – Distribution Systems
 - Subchapter XI – Water Pressure Booster Stations
 - Subchapter XII – Waste Disposal
- Next Steps
- Adjourn

Meeting Logistics (Zoom)

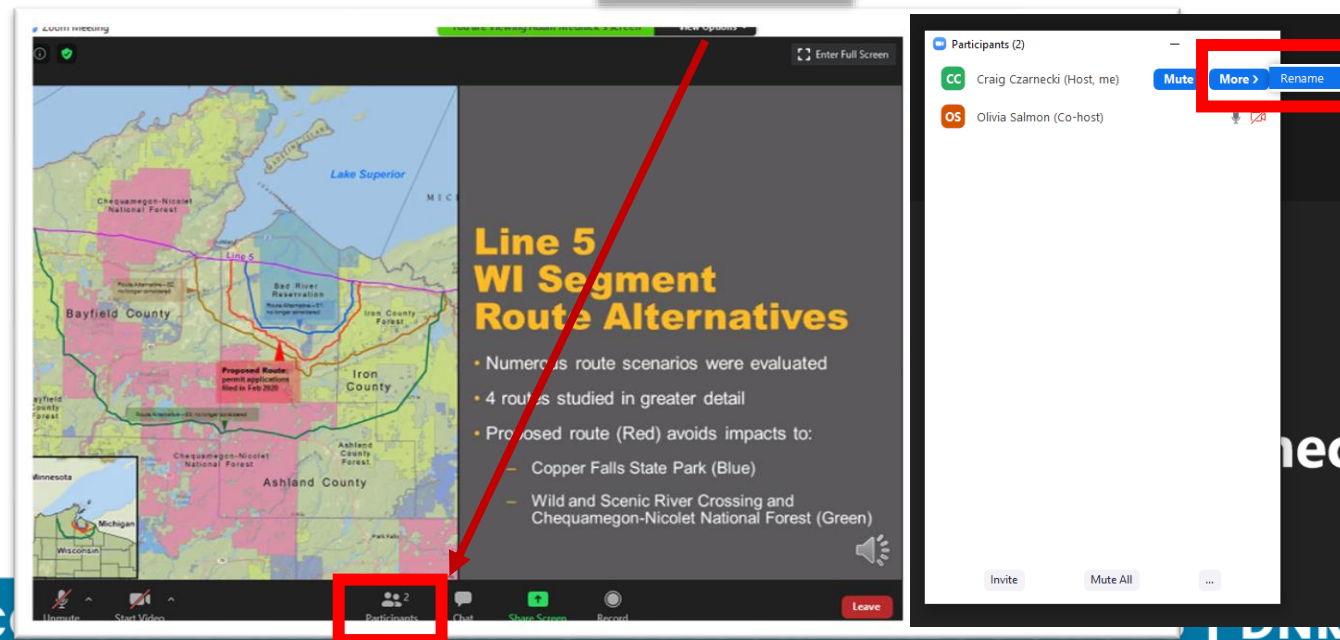
Update your Participant name to include your full name:

1. Click Participants
2. Click your name. Click More>Rename to update.

(1.)



(2.) Click Name > More > Rename to include your full name.



Meeting Logistics (Zoom)

If you would like to submit a verbal comment:

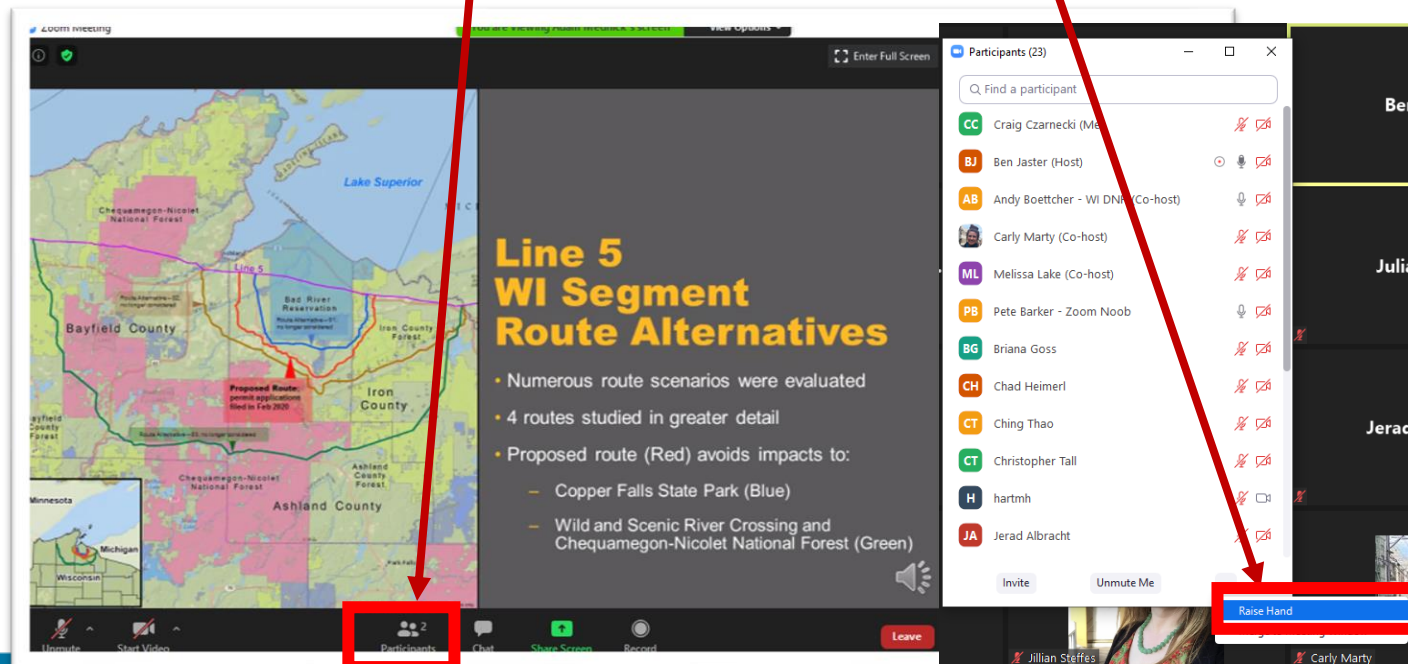
1. Click “Participants”

2. Click “Raise Hand”

(1.)

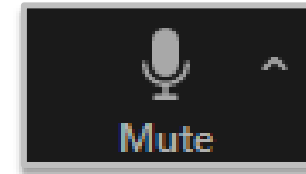
(2.)

Raise Hand



Meeting Logistics (Zoom)

3. When your name is called, the *Meeting Host* will unmute you

A screenshot of a Zoom meeting interface. The main content area displays a map titled "Line 5 WI Segment Route Alternatives" with various colored overlays (red, blue, green) and text. A red arrow points from the "Unmute" button in the bottom toolbar to the "Unmute Me" button in the participant list. The participant list on the right shows 299 participants, with "Nat Resources (Host)" highlighted in green. The bottom toolbar includes buttons for "Unmute", "Start Video", "Participants", "Chat", "Share Screen", "Record", and "Leave".

Line 5 WI Segment Route Alternatives

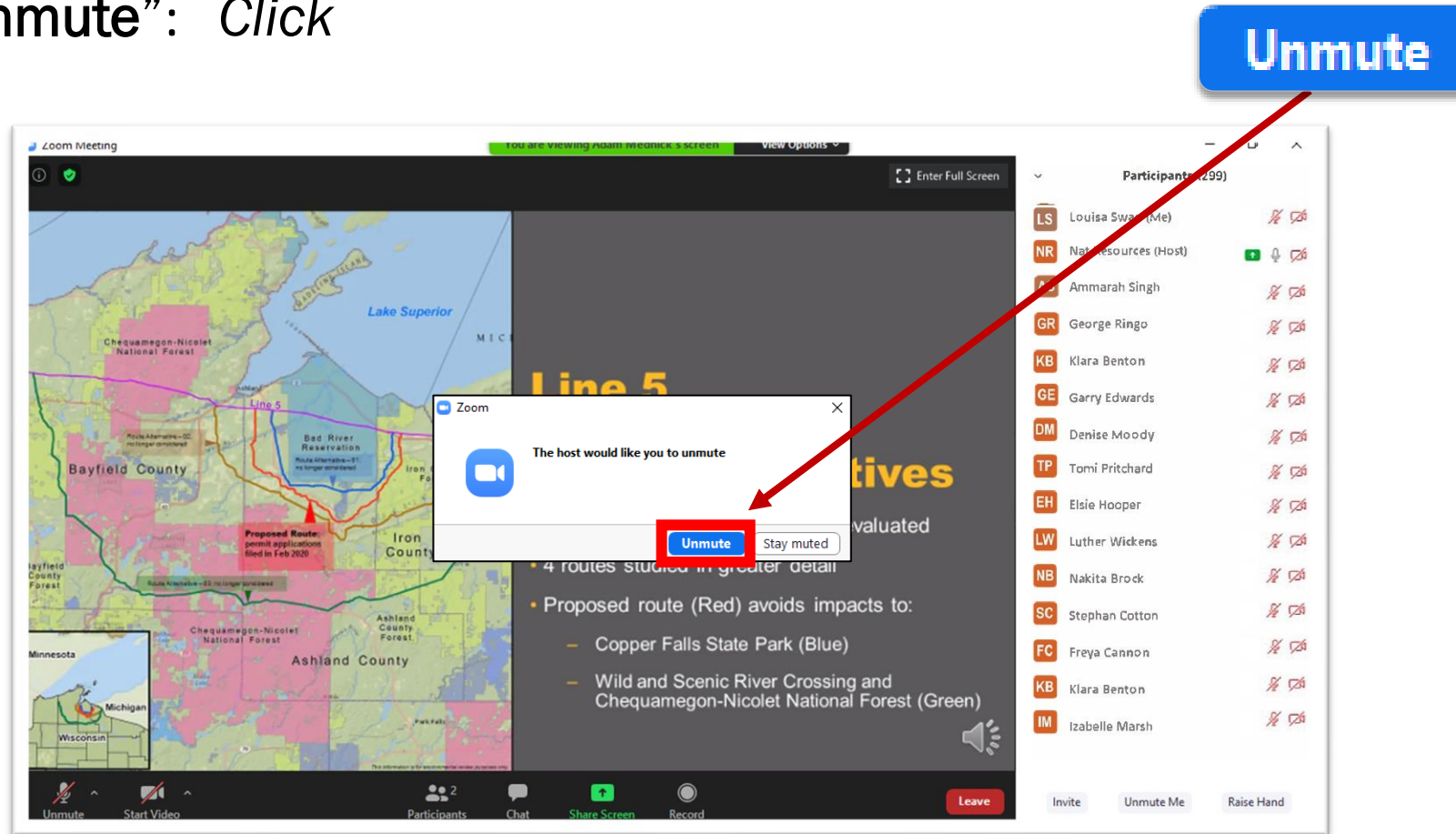
- Numerous route scenarios were evaluated
- 4 routes studied in greater detail
- Proposed route (Red) avoids impacts to:
 - Copper Falls State Park (Blue)
 - Wild and Scenic River Crossing and Chequamegon-Nicolet National Forest (Green)

Participants (299)

| Initials | Name | Mute | Video |
|----------|----------------------|------|-------|
| LS | Louisa Swan (Me) | 🔇 | 📷 |
| NR | Nat Resources (Host) | 🟢 | 📷 |
| AS | Ammarah Singh | 🔇 | 📷 |
| GR | George Ringo | 🔇 | 📷 |
| KB | Klara Benton | 🔇 | 📷 |
| GE | Garry Edwards | 🔇 | 📷 |
| DM | Denise Moody | 🔇 | 📷 |
| TP | Tomi Pritchard | 🔇 | 📷 |
| EH | Elsie Hooper | 🔇 | 📷 |
| LW | Luther Wickens | 🔇 | 📷 |
| NB | Nakita Brock | 🔇 | 📷 |
| SC | Stephan Cotton | 🔇 | 📷 |
| FC | Freya Cannon | 🔇 | 📷 |
| KB | Klara Benton | 🔇 | 📷 |
| IM | Izabelle Marsh | 🔇 | 📷 |

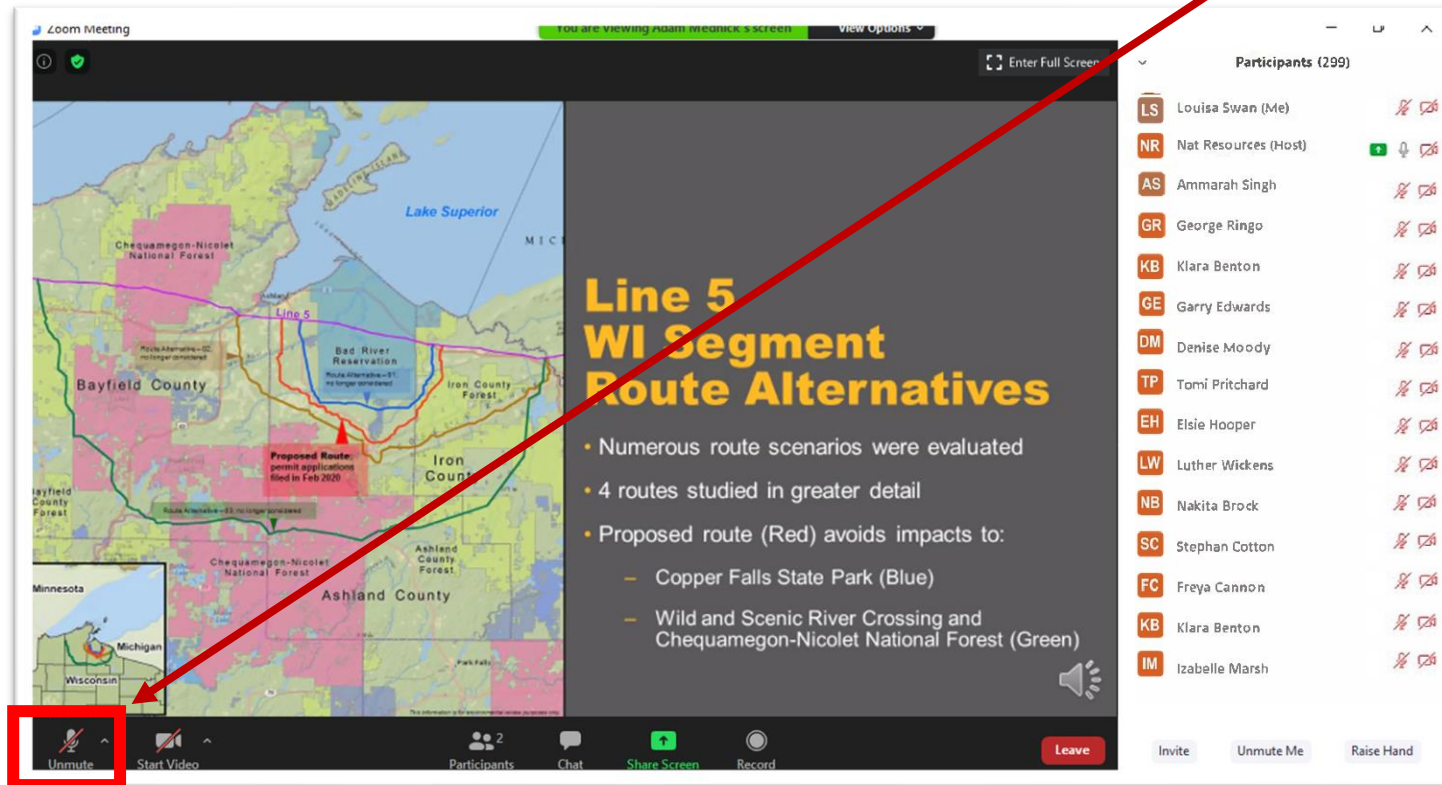
Meeting Logistics (Zoom)

4. You should receive a pop-up “The host would like you to unmute”: *Click*



Meeting Logistics (Zoom)

5. When you've finished speaking, the Host will re-mute you



NR 811 Applicability

- Applies to new community water systems and improvements, extensions, or alterations to existing community water systems
- Covers community water system source water, pumping facilities, treatment, storage, distribution and waste disposal requirements.



Stakeholder Input and Proposed Revisions

Stakeholder Input: We will first ask for stakeholder input or suggestions for code revisions from stakeholders.

Department Proposed Revisions: We will then provide the departments proposed revisions for the applicable subchapter. The proposed revisions are still considered draft and are subject to change.

NR 811 Introductory Material and Subchapter I: Submission of Plans

Kevin Karpinski

Stakeholder Input or Suggestions

The Introductory Materials section covers the definitions used throughout code, applicability of NR 811, cross-connections and interconnections.

Subchapter I contains general and specific requirements for submitting engineering plans, reports, and specifications.

Input or Suggestions?

Department Proposed Revisions

- Amend existing definitions and add new definitions to reduce confusion in other sections of ch. NR 811, Wis. Adm. Code.
- Amend s. NR 811.08(3) to include a chemical blend change as an allowable submittal that does not require a P.E. seal, so long as the chemical feed equipment had been previously approved.
- Amend s. NR 811.09(1)(h)2, Wis. Adm. Code to clarify when profiles should be included with water main submittals.

Subchapter VI: Chemical Addition

McCrea Baker

Stakeholder Input or Suggestions

Subchapter VI covers the code requirements for chemical feed equipment at community water systems. The subchapter includes requirements for chemical feed equipment, storage, and handling.

Input or Suggestions?

Department Proposed Revisions

- Adding peristaltic chemical feed pump anti-siphon device requirements s. NR 811.39(2)(e)3., Wis. Adm. Code.
- Amending s. NR 811.39(6), Wis. Adm. Code to include the requirements chemical use measurement methods.
- Amending s. NR 811.40(1)(h), Wis. Adm. Code to no longer allow flooded suction lines on chemical feed pumps.
- Amending s. NR 811.40(1)(j), Wis. Adm. Code to require that chemical storage tank overflows must be provided with a 24-mesh corrosion resistant screen.

Department Proposed Revisions (Cont.)

- Amending s. NR 811.40(1)(L), Wis. Adm. Code to clarify that chemicals are provided with their own secondary containment and shall be located separately from other chemicals.
- Amending s. NR 811.40(n), Wis. Adm. Code to clarify when chemical storage tank vents are required and the design criteria they have to meet.

Subchapter VII: Treatment

McCrea Baker

Stakeholder Input or Suggestions

Subchapter VII covers the design and construction requirements for surface water and groundwater sources, pilot study requirements, and other specific treatment requirements.

Input or Suggestions

Department Proposed Revisions

- Create a packed tower aeration subsection in s. NR 811.45, Wis. Adm. Code which reflects 10 states standards.
- Amend s. NR 811.48(8), Wis. Adm. Code to expand on ammonia chemical feed installation requirements. Amended section will follow 10 states standards.
- Create a separate pressure filtration section that will follow 10 states standards.

Department Proposed Revisions

- Create a separate anion exchange section that will follow 10 states standards.
- Create a general emerging contaminants treatment section.

Subchapter VIII: Hydro-Pneumatic Tanks

Ryan Daugherty

Stakeholder Input or Suggestions

Subchapter VII covers the code requirements for hydro-pneumatic tanks at community water systems. The subchapter includes requirements for sizing and appurtenances.

Input or Suggestions?

Department Proposed Revisions

- Amend s. NR 811.61(7), Wis. Adm. Code by removing the language explaining that the intent of the code is for the storage volume to provide a minimum pump run time of 2 to 3 minutes.
- A new note would be added beneath s. NR 811.61(7), Wis. Adm. Code that recommends the storage volume provide a minimum pump run time of at least 2 minutes.

Subchapter IX: Storage Facilities

Ryan Daugherty

Stakeholder Input or Suggestions

Subchapter IX covers the code requirements for community water systems storage facilities. The subchapter includes requirements for storage facility design, appurtenances, and safety.

Input or Suggestions?

Department Proposed Revisions

- Amend s. NR 811.63(5), Wis. Adm. Code by adding “ground storage” to specify the reservoir type that must meet the contamination separation distance requirements.
- Amend s. NR 811.64(1)(a), Wis. Adm. Code to add fiberglass to the allowable materials that can be used for water storage facilities.
- Amend s. NR 811.64(4)(a)5., Wis. Adm. Code to separate out the overflow discharge options for a flapper and rubber duck bill valve and create a new code requirement for a rubber duck bill valve that will follow the 10 States Standards.

Department Proposed Revisions

- Amend s. NR 811.64(4), Wis. Adm. Code to clarify the angle of termination for overflows on elevated storage tanks, standpipes, and ground level storage tank.
- Amend s. NR 811.64(7), Wis. Adm. Code to remove the access hatch gasket language that requires the gasket to be “attached to the bottom side of the cover” and allow for a gasket to be provided on the cover of the manhole opening.
- Amend s. NR 811.64(8)(c), Wis. Adm. Code to remove U-Bend Vent option for Elevated Tanks and Standpipes and clarify mesh requirements for “frost-proof” mushroom cap vents.

Department Proposed Revisions

- Create a new material code requirement for inner pallet screens of “frost-proof” mushroom cap vents. The code would require that the inner pallet be constructed of corrosion resistant material.
- Amend s. NR 811.64(10)(i), Wis. Adm. Code to add a minimum roof slope requirement of 0.015 feet per foot. The note directly beneath this code section which states “For this section flat does not mean level” would be removed.
- Amend s. NR 811.64(15)(b), Wis. Adm. Code to include the new ANSI/NSF 600 requirements for interior paints and coating systems, which takes effect January 1st, 2023.

Department Proposed Revisions

- Delete s. NR 811.64(16)(b), Wis. Adm. Code to remove the requirement that a chlorination tap must be provided at a storage facility.
- Create a new requirement for a separate condensate platform drain. The condensate platform drains would no longer be allowed to connect to the overflow piping.
- Amend s. NR 811.64(16)(c), Wis. Adm. Code to include similar language to the building drain requirements in s. NR 811.25(1)(h)2., Wis. Adm. Code

Subchapter X: Distribution Systems

James Witthuhn

Stakeholder Input or Suggestions

Subchapter X covers the requirements for design and construction of water distribution systems, including transmission mains and service distribution mains and associated appurtenances.

Input or Suggestions?

Department Proposed Revisions

- Create a new requirement that all interconnections between water systems be approved by the department.
- Amend s. NR 811.70(4) and (9), Wis. Adm. Code, to clarify the valve spacing requirements for transmission mains and distribution mains.
- Amend s. NR 811.71(5), Wis. Adm. Code, to require installation of auxiliary valves on hydrant leads for all new water main installations.

Department Proposed Revisions

- Amend s. NR 811.72(1), Wis. Adm. Code, to clarify the ventilation requirements for below grade structures in the distribution system.
- Amend s. NR 811.73(2)(e), Wis. Adm. Code, for depth of cover requirements for water mains
- Amend s. NR 811.75(c), Wis. Adm. Code, to add new requirements for separation between water mains and wastewater treatment plant and storm water treatment components

Subchapter XI: Water Pressure Booster Stations

James Witthuhn

Stakeholder Input or Suggestions

Subchapter XI covers the design and construction requirements for booster stations, including boosted pressure zone storage and emergency power requirements.

Input or Suggestions?

Department Proposed Revisions

- No major revisions proposed.

Subchapter XII: Waste Disposal

Ben Mand

Stakeholder Input or Suggestions

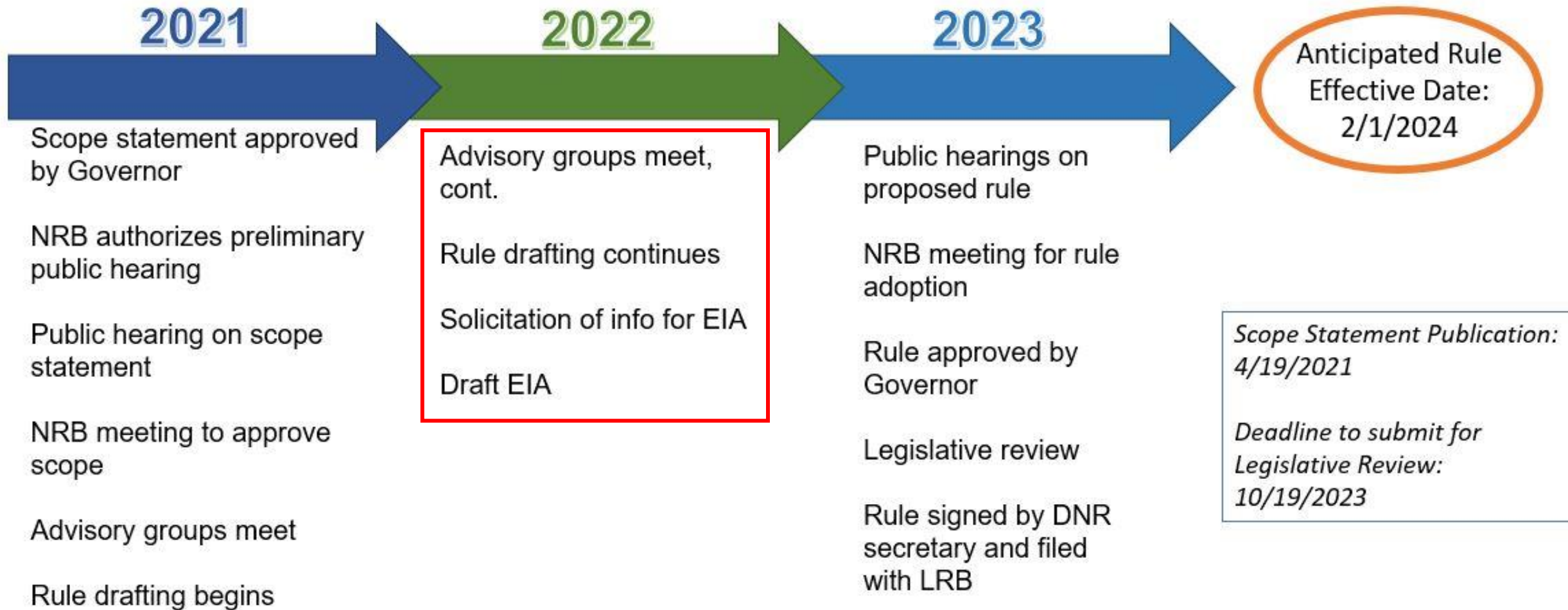
Subchapter XII covers the requirements for disposal of wastes from waterworks facilities.

Input or Suggestions?

Department Proposed Revisions

- Verify that the requirements of the subchapter are consistent with wastewater and solid waste requirements
- Update and clarify who is to be contacted for different aspects of disposal outlined in the subchapter

Rulemaking Process and Anticipated Timeline



CONNECT WITH US

McCrea Baker

(608) 279-8426

McCrea.Baker@wisconsin.gov

Theera Ratarasarn

(608) 228-0555

Theera.Ratarasarn@wisconsin.gov



/WIDNR



@WIDNR



@WI_DNR



/WIDNRTV



"WILD WISCONSIN:
OFF THE RECORD"