

New Trail Ranking and Certification Worksheet

County: Rock Segment Name/Trail #: SD NEW
 Date of Application: April 12, 2022 Miles Requested: 4.4

Qualifications – All items in this worksheet must be completed for new miles request, and submitted with a copy of the Motorized Recreation Grant Application 8700-159 for each new trail. Each trail must be submitted separately. All items in this section must be completed for valid new trail maintenance funding request – incomplete applications will be denied.

Any rehabilitation funding requests should be included at this time on form 8700-159. Trails must be in the funded system for at least 10 years before they are eligible to receive rehab grants, so it is important to include rehabilitation needs now. (NR 50.09 (4) (g))

Gateways questions: Provide justification for selection below.	
<input checked="" type="checkbox"/> 1. Trail provides primary access route through a county and connects with another county's trails. <input type="checkbox"/> 2. Trail provides access from population centers to main access trail(s). <input type="checkbox"/> 3. Trail supports a high volume of use. <input type="checkbox"/> 4. Trail is separate from the road surface, marked and groomed as a snowmobile trail. Plowed roads do not qualify as a funded off-road trail. (s. 350.01 (16) and (17) Wis. Stats.)	
Maps attached <i>(All are required)</i>	<input checked="" type="checkbox"/> Provide GIS file (shapefile, etc) of county trail system with the requested trail segments included. <input checked="" type="checkbox"/> Provide countywide trail system map (printed/PDF) with the requested trail segments identified. <i>(Map should show how the requested new mile segment fits into the trail system, and what it connects to.)</i> <input checked="" type="checkbox"/> Provide aerial/topographical map (printed/PDF) for each segment. <i>(Map should show a more detailed view of the trail, but still clear on trail location and connections).</i>
<input type="checkbox"/> I certify that this trail meets or will meet all trail requirements in chs. 23 & 350, Wis. Stats. and ch. NR 50, Wis. Admin. Code	
<ol style="list-style-type: none"> 1. Minimum graded width for one-way trails is 6 feet and maximum 8 feet. 2. Minimum graded width for two-way trails is 10 feet and maximum 12 feet. 3. Minimum turning radius is 25 feet. 4. Minimum cleared height above trail is 10 feet. 5. Sustained grades and slopes will be a maximum of 25%. 6. Approved, fully reflectorized snowmobile signs must be used. 7. Snowmobile trails shall not be routed over bodies of water. If stream crossings make bridging necessary, bridges should be at least 8 feet wide. If the bridge is located on an abandoned railroad grade, the bridge shall be a minimum of 10 feet wide free from obstruction. 	
Justification <i>(Required)</i> – Provide narrative description of the new trail with explanation for gateway qualification checked (#1, 2 or 3 above).	
These 4.4 miles of new trail give riders more trails to ride west of Edgerton. This trail connects to the Stoughton Vikings trail in nearby Dane County. This trail has been in use for two seasons and the 2020-2021 season the trail had enormous usage. The trail is almost 100% fields with scenery of America's heartland.	

Water Crossings (*Required*) - Does the requested trail segment include any bridges, culverts or water crossings? If so, Describe. If not, indicate none. *Bridge structures should be added to the county's snowmobile bridge inventory if not already included.*

NONE

Ranking

	Category	Possible Points	Actual Points
1.	Trail Longevity (<i>If multiple scenarios along the trail, lowest point situation applies. County must provide copy of easements/LUAs with application if >0 pnts, if not on public land.</i>)	Max points: 3	
	Trail segment is located on public land or private land with permanent deeded easement.	3	
	Trail segment on private lands with land-use agreement (LUA) of 10 years or more.	2	
	Trail segment is on private lands with LUA of 5 to 9 years.	1	
	LUA of less than 5 years.	0	0
2.	Trail System (<i>choose one</i>)	Max points: 3	
	Trail segment connects <u>directly</u> to one or more neighboring county or state trails.	3	3
	Trail closes a gap between two existing funded trail segments, or extends existing funded trail 10 or more miles – excludes routes.	2	
	Trail segment is a part of the basic county trail system.	1	
	Trail is isolated and does not connect to the county trail system.	0	
3.	The trail segment is in the following area of mean annual snowfall <u>Mean Snowfall Map per County</u> (Source: Midwestern Climate Center)	Max points: 3	
	Greater than 60 inches	3	
	48 – 60 inches	2	
	Less than 48 inches	1	1
4.	The ratio of miles of trail to total square miles of land within the county: <u>Snowmobile Trail Area Ratio per County</u>	Max points: 3	
	The ratio is within the grouping 01% - 30%	3	
	The ratio is within the grouping 31% - 40%	2	2
	The ratio is within the grouping 41% - 50%	1	
	The ratio is in a grouping of over 50%	0	
5.	Trail segment will be groomed with the following equipment. (<i>choose one</i>)	Max points: 2	
	Class A-1, A-2 includes AAA and AA	2	2
	Class A-3, A-4 includes AAA and AA	1	
	Class B or C	0	
6.	County snowmobile trail coordinator priority points. Note: County is allowed 2 points maximum for ALL trail segments submitted.	Max points: 2	
	High priority.	2	
	Medium priority.	1	1
	No priority.	0	
7.	Deductions if trail segment contains any of the following: (<i>check all that apply</i>)	Max deduction: -8	
	New bridge, major bridge rehab or major trail rehab	-3	
	Trail segment is parallel (within 5 miles) to another funded segment	-3	-3
	Trail runs to a body of water. (<i>no deduction for use of a bridge to cross</i>)	-2	
(Maximum Points: 16) TOTAL			6

***Please verify that all sections of this form have been completed,
and all required attachments included prior to submittal. Incomplete applications will be denied.***

Please Support These Sponsors!

P-Parking		G-Gas		* - No Access	
1	Lakeview Camp Ground	P	23	Footville Mini-Mart	G
2	Snuffy's Still	P	24	Bass Creek Golf Course	P
3	Buckhorn Supper Club		25	A & H INC	*
4	Countryview	P	26	Villa Pizza	*
5	JR's Pub		27	Stables Bar & Grille	*
6	Norm's	P-G	28	Knutes Bar & Grill	
7	Carl's Shell	G	29	Orfordville American Legion	
8	Oberg's Bar	P	30	Helgesen's Harpo's	
9	American Family Dave Pierce	*	31	Ding-A-Ling	*
10	Steve's 51 Auto Repair	*	32	Oaks Ridge Riders	*
11	190 Enterprises	*	33	Joe Sanks Agency	*
12	Bargain Barn	*	34	Willowdale	*
13	Twisted Diesel Tuning	*	35	Lions Quickmart	G
14	Beacon Inn	*	36	Schwartz & Shea	*
15	House of Styles	*	37	Best Realty	*
16	Off The Hook	P	38	Creeksview Par Three	P
17	Showboat	P	39	Shopiere Tap	
18	BP Landmark	P-G	40	Bootleggers	
19	Boarders Inn & Suites	P	41	Citgo/Subway	P-G
20	The Red Barn	P	42	Clinton Ace Hardware	
21	B'Ners Bar		43	unused	
22	Footville Friendly Café		44	Country Pride Meats	*
45	Arye Excavating	*	67	Ron & Sue's Beverage Mart	*
46	Boxcars	*	68	Junction Pub	*
47	Gilbank Construction	*	69	Fat Pumpkin Paint Works	*
48	Custom Mfg	*	70	unused	*
49	Phil's Electric Drain	*	71	Red Zone	*
50	Copper Falls	*	72	Fredrick's Supper Club	*
51	Renner Trucking Inc	*	73	King Blunder	*
52	Happy House Liquors	*	74	Foxy's	*
53	Cougar Lanes	*	75	Rob's Motor Sports	*
54	John's Excavating	*	76	Rock River Motor Sports	*
55	Jake's Electric	*	77	Diamond Jim's	*
56	Boars Nest	*	78	Love's Park Motorsports	*
57	Whiskey Ranch	*	79	Wilson Sports	*
58	Nicki Nickols Agency	*	80	A+ Power Sports	*
59	Hat Rack	*	81	Hankster's	*
60	Duck Inn	*	82	Dr Detail	*
61	unused	*	83	Monroe Power Sports	*
62	Fagan Chevrolet	*			
63	unused	*			
64	Frank Brothers	*			
65	Dave's Ace	*			
66	Deb's Squeeze Inn	*			

QUADRANTS

Rock County is divided into quadrants to allow opening only part of the trail system when conditions don't allow opening county-wide.

The north-south line is Hwy 73 to Hwy 51. The east-west line is Hwy 14.

Thank you: Landowners

You open your land to us and make this trail system possible!

Club members

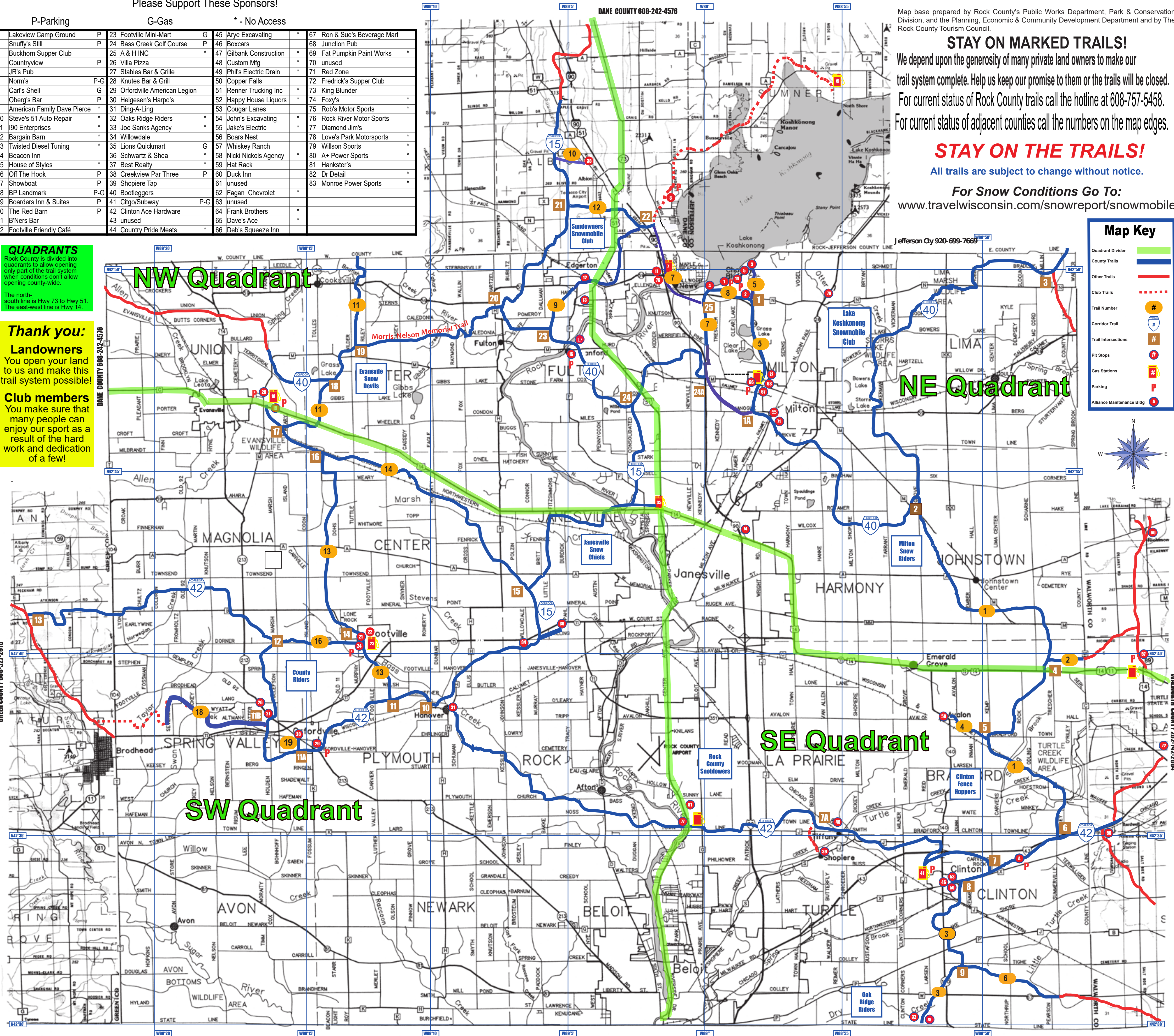
You make sure that many people can enjoy our sport as a result of the hard work and dedication of a few!

ROCK COUNTY SNOWMOBILE CLUBS & CONTACTS

- Rock County Parks Dept Hotline 608-757-5458
- Clinton Fence Hoppers Mark Hubka 608-302-7917
- Country Riders Mike Ferger 608-251-4369
- Evansville Sno Devils Matt Ardis 608-513-0379
- Janesville Snow Chiefs Bob Kaiser 608-289-2364
- Lake Koshkonong Snowmobile Club Kate Fuchs 262-949-7749
- Milton Snow Riders Levi Olson 608-295-1039
- Oaks Ridge Riders Rod Chambers 815-389-3363
- Rock County Snowblowers Don Myers 608-207-5462
- Edgerton Sundowners Richard Plautz 608-686-5359

Hankster's Motorsports
6319 Hwy 51, Janesville, WI
Bring in this ad for:
\$10.00 OFF ANY PURCHASE OVER \$50.00 OR MORE!!
\$50.00 OFF ANY SERVICE WORK OVER \$100!!!
SERVICING ALL MAKES AND MODELS!
hankstermotorsports.com

DANE COUNTY 608-242-4576



Map base prepared by Rock County's Public Works Department, Park & Conservation Division, and the Planning, Economic & Community Development Department and by the Rock County Tourism Council.

STAY ON MARKED TRAILS!

We depend upon the generosity of many private land owners to make our trail system complete. Help us keep our promise to them or the trails will be closed. For current status of Rock County trails call the hotline at 608-757-5458. For current status of adjacent counties call the numbers on the map edges.

STAY ON THE TRAILS!

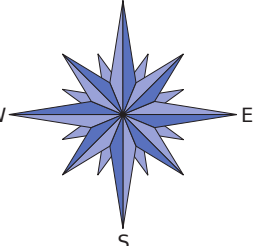
All trails are subject to change without notice.

For Snow Conditions Go To:

www.travelwisconsin.com/snowreport/snowmobile

Map Key

- Quadrant Divider
- County Trails
- Other Trails
- Club Trails
- Trail Number
- Corridor Trail
- Trail Intersections
- Pit Stops
- Gas Stations
- Parking
- Alliance Maintenance Bldg



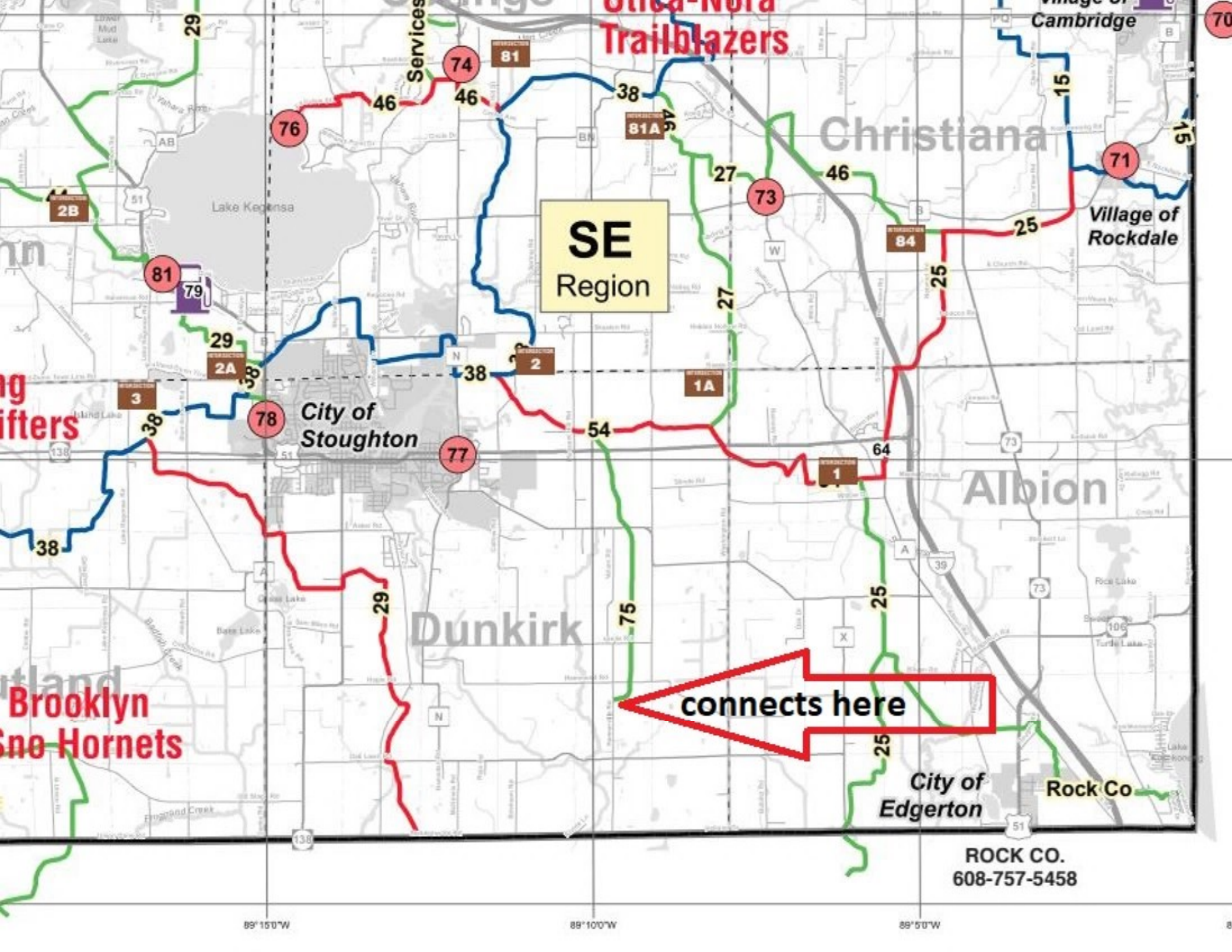
...e's Park Motorsports	*
...son Sports	*
...Power Sports	*
...kster's	
...Detail	*
...ro Power Sports	*



Starts Here

Morris Nelson Memorial Trail

**Sundowners
Snowmobile
Club**



SE
Region

connects here

ROCK CO.
608-757-5458

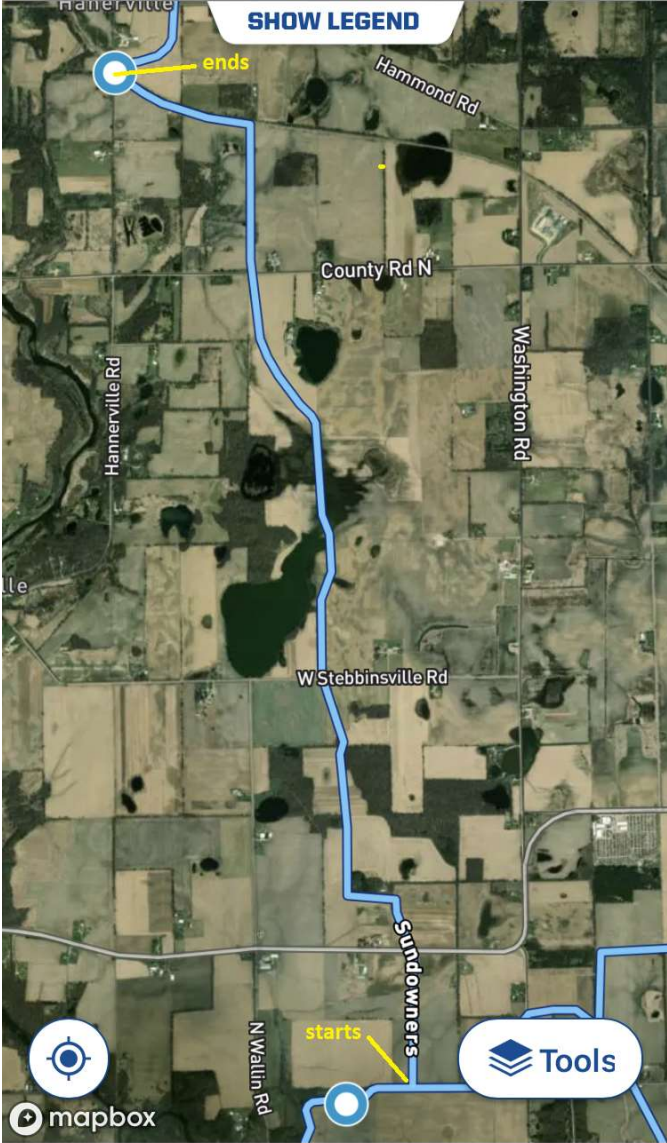
1:40



POLARIS



SHOW LEGEND



mapbox

Tools



Map



Group Ride



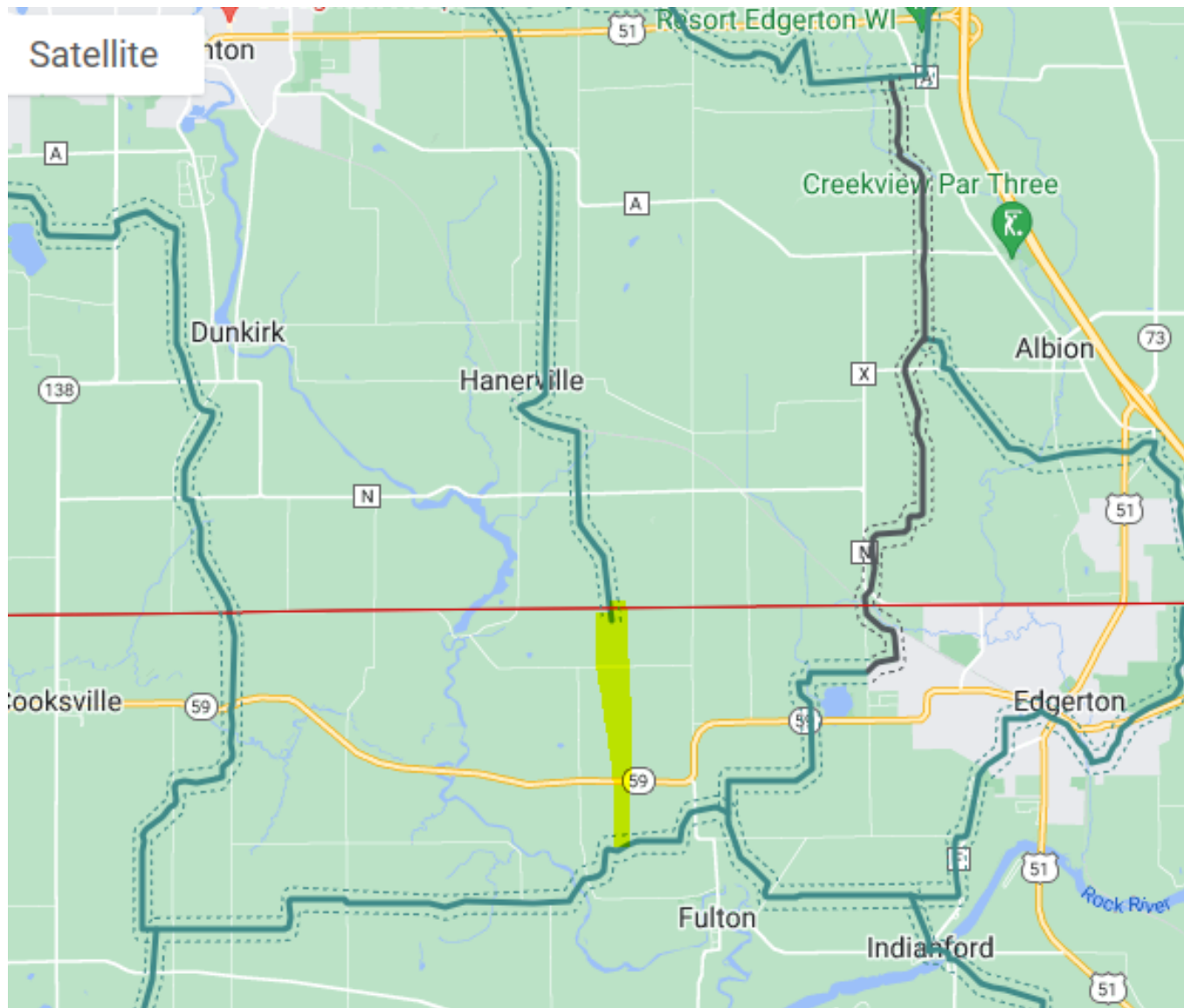
Rides



Community



More



From Groomer Tracking Systems. Note, trail footprint already in as "funded" north of the county line. Not sure if Dane Co is receiving maintenance funding for that section south of Hanerville



ANNERVILLE RD

DULITZ RD

Dane County

002013

032 gap

032 00200203

Muskrot Lake

032 001 003

032 001001

032 dedicated

012 01203

032 001004

032 00100301

032 001002

012 dedicated

032 002002

032 00200101

W STEBBINSVILLE RD

032 002020

032 00100501

012 01207

012 dedicated

032 00200205

012 dedicated

012 0120801

032 0020201

032 001004

032 001007

032 dedicated

012 01206

012 dedicated

Length: 2.2 Miles

Town of Porter

Town of

012 dedicated

012 01304

012 013043

032 012001

012 01305

012 013042

032 011001

032 012005

032 012002

032 dedicated

032 011002

N WALWORTH RD

032 012004

012 01306

032 dedicated

032 012007

012 01303

032 011002

032 011009

032 012006

032 012003

032 012008

012 01307

032 012009

012 0140201