

New Trail Ranking and Certification Worksheet

County: Lincoln Segment Name/Trail #: Old Grade

Qualification – All items in this section must be completed for valid new miles request.

Gateways questions: Provide justification for selection below.

- 1. Trail provides primary access route through a county and connects with another county's trails.
- 2. Trail provides access from population centers to main access trail(s).
- 3. Trail supports a high volume of use.

Maps attached

- Provide GIS file (shapefile, etc) of county trail system with the requested trail segments included.
- Provide countywide trail system map (printed/PDF) with the requested trail segments identified.
- Provide aerial map (printed/PDF) for each segment.
- Provide topographical map (printed/PDF) for each segment. Include Town-Range-Section.

I certify that this trail meets or will meet all trail requirements in chs. 23 & 350, Wis. Stats. and ch. NR 50, Wis. Admin. Code

1. Minimum graded width for one-way trails is 6 feet and maximum 8 feet.
2. Minimum graded width for two-way trails is 10 feet and maximum 12 feet.
3. Minimum turning radius is 25 feet.
4. Minimum cleared height above trail is 10 feet.
5. Sustained grades and slopes will be a maximum of 25%.
6. Approved, fully reflectorized snowmobile signs must be used.
- 7. Night travel on or in the vicinity of highways must be in the direction of vehicular traffic in the nearest lane unless:**
 - The snowmobile trail is located at least 40 feet from the roadway, or
 - is separated from the roadway by a head lamp barrier.
8. Snowmobile trails shall not be routed over bodies of water. If stream crossings make bridging necessary, bridges should be at least 8 feet wide. If the bridge is located on an abandoned railroad grade, the bridge shall be a minimum of 10 feet wide free from obstruction.

Justification – Provide narrative description of the new trail with explanation for gateway qualification checked (#1, 2 or 3 above).

Lincoln County is requesting maintenance funding for an additional 3.2 miles of snowmobile trail in the Tomahawk area. The new trail will connect two locations with fuel, restrooms, parking, and lodging facilities to currently funded trails. Approximately half of the mileage of the new trail is an old railroad grade owned by the City of Tomahawk. The trail will not require any development funding as it has been maintained as a heavily used club trail for many years. No new bridges or culverts will be necessary. No water crossings are shown on the DNR Surface Water Data Viewer.

Does the requested trail segment include any bridges or water crossings? Describe. Bridge structures should be added to the county's snowmobile bridge inventory if not already included.

No

Ranking

	Category	Possible Points	Actual Points
1.	Trail Longevity (If multiple scenarios along the trail, lowest point situation applies. County must have a copy of said easements/LUA on file.)	Max points: 3	
	Trail segment is located on public land or private land with permanent deeded easement.	3	
	Trail segment on private lands with land-use agreement (LUA) of 10 years or more.	2	
	Trail segment is on private lands with LUA of 5 to 9 years.	1	
	LUA of less than 5 years.	0	0
2.	Trail System	Max points: 3	
	Trail segment connects directly to one or more neighboring county or state trails.	3	
	Trail closes a gap between two existing funded trail segments, <i>or</i> extends existing funded trail 10 or more miles – excludes routes.	2	
	Trail segment is a part of the basic county trail system.	1	1
	Trail is isolated and does not connect to the county trail system.	0	
3.	The trail segment is in the following area of mean annual snowfall <u>Mean Snowfall Map per County</u> (Source: Midwestern Climate Center)	Max points: 3	
	Greater than 60 inches	3	
	48 – 60 inches	2	2
	Less than 48 inches	1	
4.	The ratio of miles of trail to total square miles of land within the county: <u>Snowmobile Trail Area Ratio per County</u>	Max points: 3	
	The ratio is within the grouping 01% - 30%	3	
	The ratio is within the grouping 31% - 40%	2	2
	The ratio is within the grouping 41% - 50%	1	
	The ratio is in a grouping of over 50%	0	
5.	Trail segment will be groomed with the following equipment.	Max points: 2	
	Class A-1, A-2 includes AAA and AA	2	2
	Class A-3, A-4 includes AAA and AA	1	
	Class B or C	0	
6.	County snowmobile trail coordinator priority points. Note: County is allowed 2 points maximum for ALL trail segments submitted.	Max points: 2	
	High priority.	2	2
	Medium priority.	1	
	No priority.	0	0
7.	Deductions if trail segment contains any of the following:	Max deduction: -8	
	New bridge, major bridge rehab or major trail rehab	-3	
	Trail segment is parallel (within 5 miles) to another funded segment	-3	-3
	Trail runs to a body of water. (no deduction for use of a bridge to cross)	-2	
(Maximum Points: 16) TOTAL			6

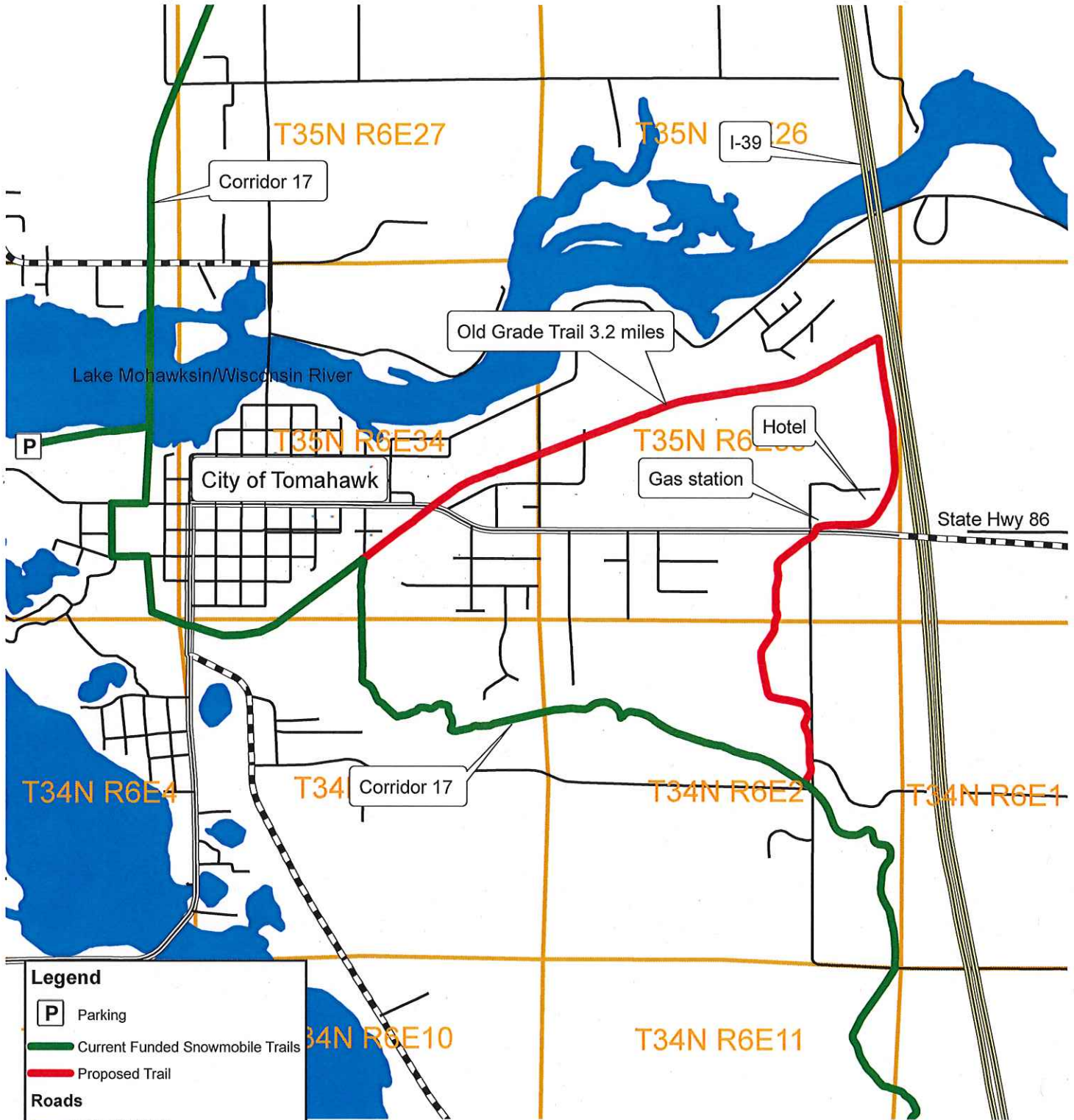
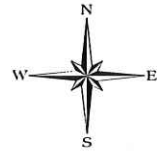
**Please verify that all sections of this form have been completed,
and all required attachments included prior to submittal.**

Lincoln County Old Grade Snowmobile Trail Project Description

Lincoln County is requesting maintenance funding for an additional 3.2 miles of snowmobile trail in the Tomahawk area. The new trail will connect two locations with fuel, restrooms, parking, and lodging facilities to currently funded trails. Approximately half of the mileage of the new trail is an old railroad grade owned by the City of Tomahawk. The trail will not require any development funding as it has been maintained as a heavily used club trail for many years. No new bridges or culverts will be necessary. No water crossings are shown on the DNR Surface Water Data Viewer.

Lincoln County will maintain funded trails or assign maintenance activities on funded trails to another representative. Trails will be maintained by grooming, brushing, signing, grading, and performing other approved activities.

Lincoln County Old Grade 3.2 New Miles



Legend

P Parking

Current Funded Snowmobile Trails

Proposed Trail

Roads

US HIGHWAY

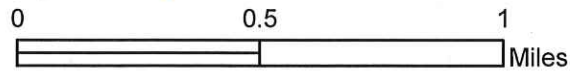
STATE HIGHWAY

COUNTY HIGHWAY

TOWN ROADS

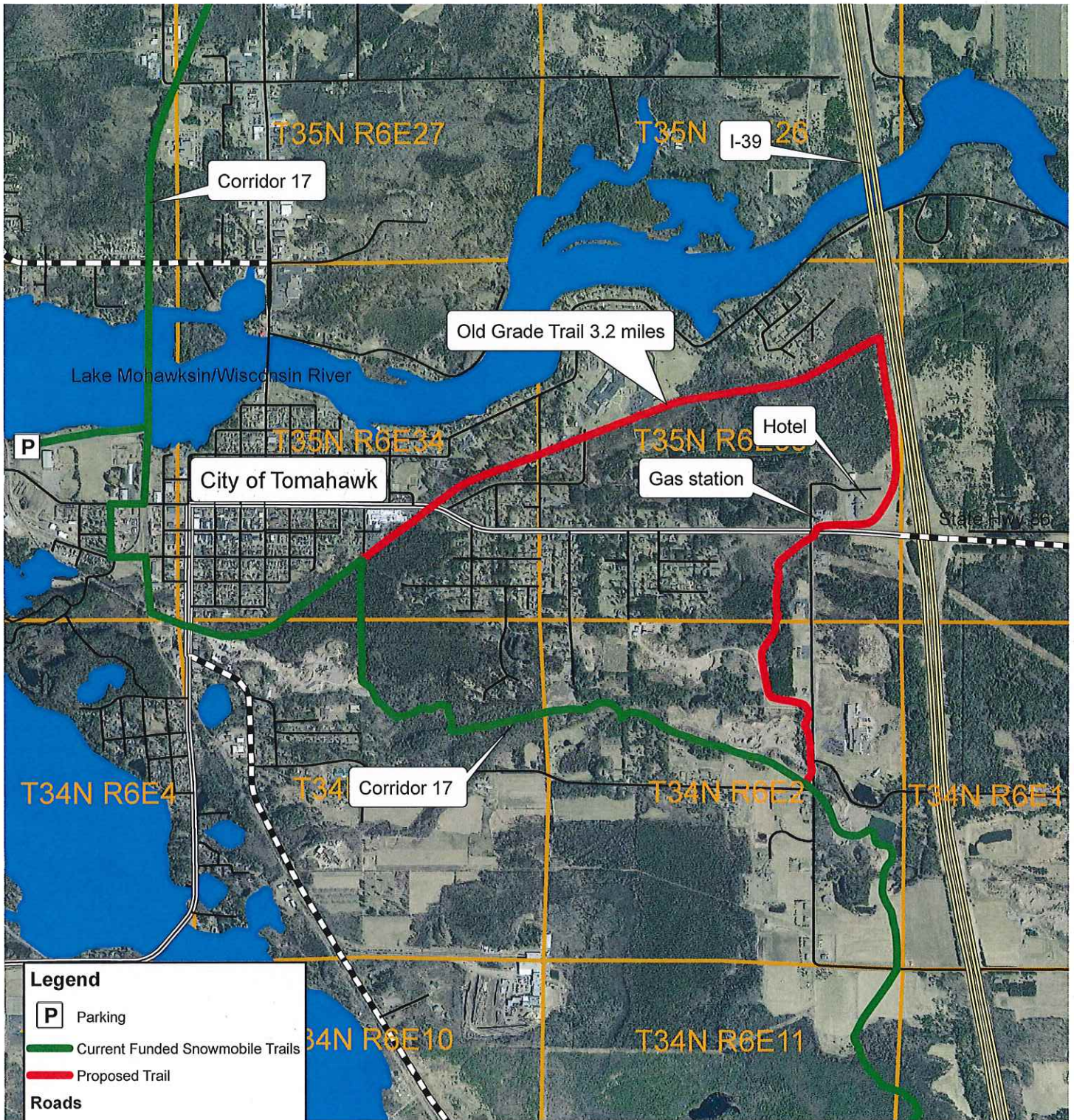
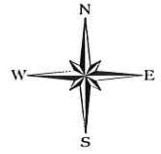
FOREST ROADS

Section Lines



The information depicted on this map is a compilation of public record information including aerial photography and other base maps. No warranty is made, express or implied, as to the accuracy of the information used. The data layers are a representation of current data to the best of our knowledge and may contain errors. It is not a legally recorded map and cannot be substituted for field verified information. This map may be reproduced with permission of the Lincoln County Land Information & Conservation Dept. Errors should be reported using the contact information provided below.
 Lincoln County Land Information & Conservation Dept
 801 N Sales St, Suite 105, Merrill, WI 54452
 715-539-1049

Lincoln County Old Grade 3.2 New Miles



Legend

P Parking

— Current Funded Snowmobile Trails

— Proposed Trail

Roads

— US HIGHWAY

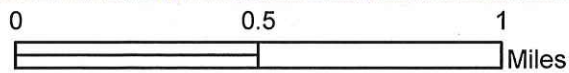
— STATE HIGHWAY

— COUNTY HIGHWAY

— TOWN ROADS

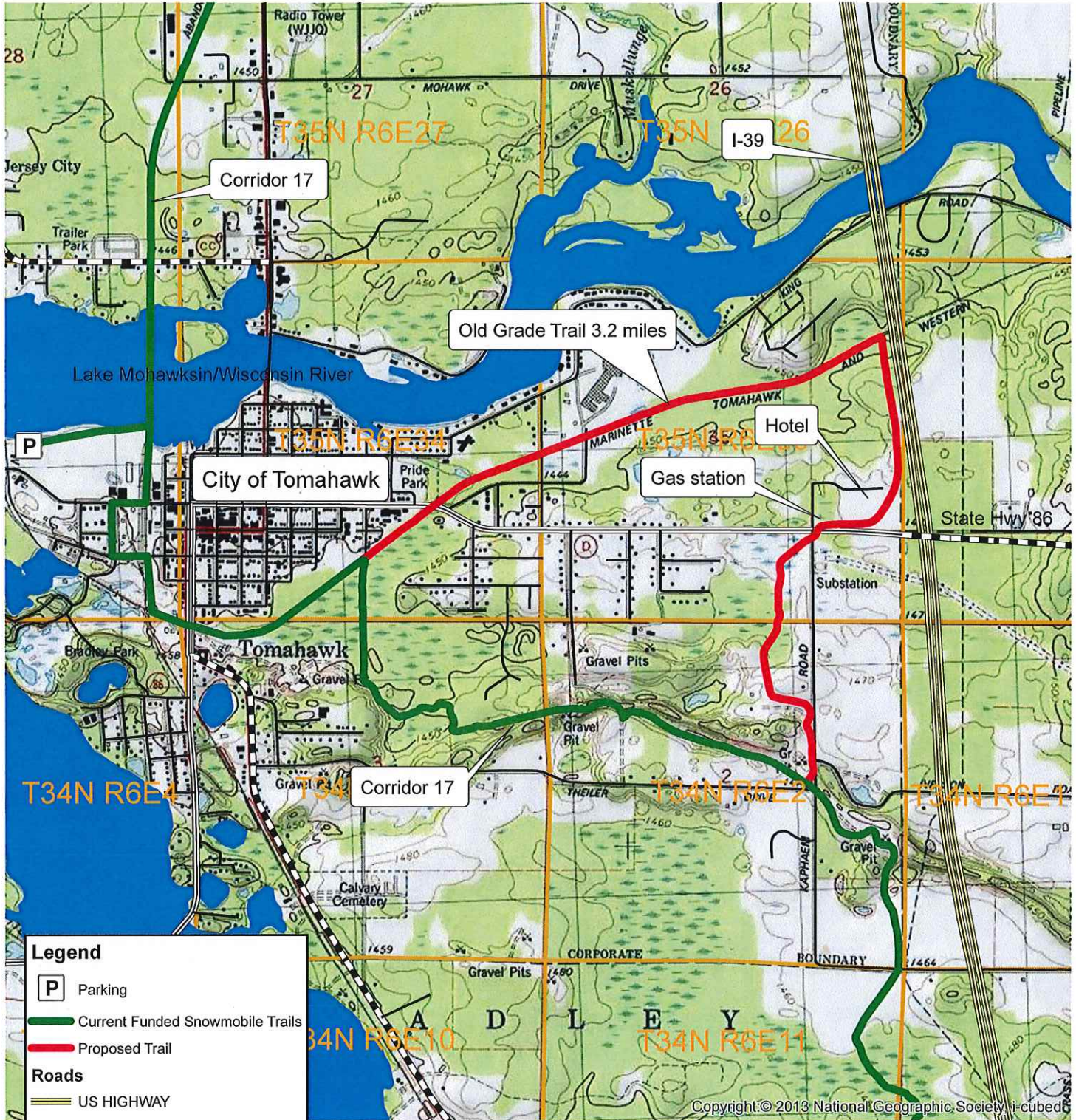
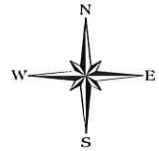
— FOREST ROADS

— Section Lines



The information depicted on this map is a compilation of public record information including aerial photography and other base maps. No warranty is made, express or implied, as to the accuracy of the information used. The data layers are a representation of current data to the best of our knowledge and may contain errors. It is not a legally recorded map and cannot be substituted for field verified information. This map may be reproduced with permission of the Lincoln County Land Information & Conservation Dept. Errors should be reported using the contact information provided below.
 Lincoln County Land Information & Conservation Dept
 801 N Sales St, Suite 105, Merrill, WI 54452
 715-539-1049

Lincoln County Old Grade 3.2 New Miles

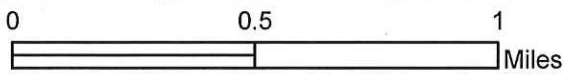


Legend

- P Parking
- Current Funded Snowmobile Trails
- Proposed Trail

Roads

- US HIGHWAY
- STATE HIGHWAY
- COUNTY HIGHWAY
- TOWN ROADS
- FOREST ROADS
- Section Lines
- USA Topo Maps



The information depicted on this map is a compilation of public record information including aerial photography and other base maps. No warranty is made, express or implied, as to the accuracy of the information used. The data layers are a representation of current data to the best of our knowledge and may contain errors. It is not a legally recorded map and cannot be substituted for field verified information. This map may be reproduced with permission of the Lincoln County Land Information & Conservation Dept. Errors should be reported using the contact information provided below.
 Lincoln County Land Information & Conservation Dept
 801 N Sales St, Suite 105, Merrill, WI 54452
 715-539-1049

Copyright © 2013 National Geographic Society. i-cubed