

NM-041 Fond du Lac Campbellsport Trail to Parking

New Trail Ranking and Certification Worksheet

Segment ID: _____

2 miles. Distance verified in Co GIS and GTS GIS

Qualification – All items in this section must be completed for valid new miles request.

Gateways questions: Provide justification for selection below.	
<input type="checkbox"/>	1. Trail provides primary access route through a county and connects with another county's trails.
<input checked="" type="checkbox"/>	2. Trail provides access from population centers to main access trail(s).
<input type="checkbox"/>	3. Trail supports a high volume of use.
<input type="checkbox"/> Maps attached	<ul style="list-style-type: none"> • Provide a current county GIS map with all requested trail segments clearly marked. • Provide aerial & topo site maps for each segment. Include Town-Range-Section.
<input type="checkbox"/> I certify that this trail meets or will meet all trail requirements in chs. 23 & 350, Wis. Stats. and ch. NR 50, Wis. Admin. Code, including the 40-foot rule regarding two-way traffic at night.	
Justification – Provide explanation for gateway qualification checked (#1, 2 or 3 above).	
<p><i>this trail has been a club trail for over 10 years this trail goes from intersection of rd to Columbus park for parking. an is 2.3 miles long</i></p>	

Ranking

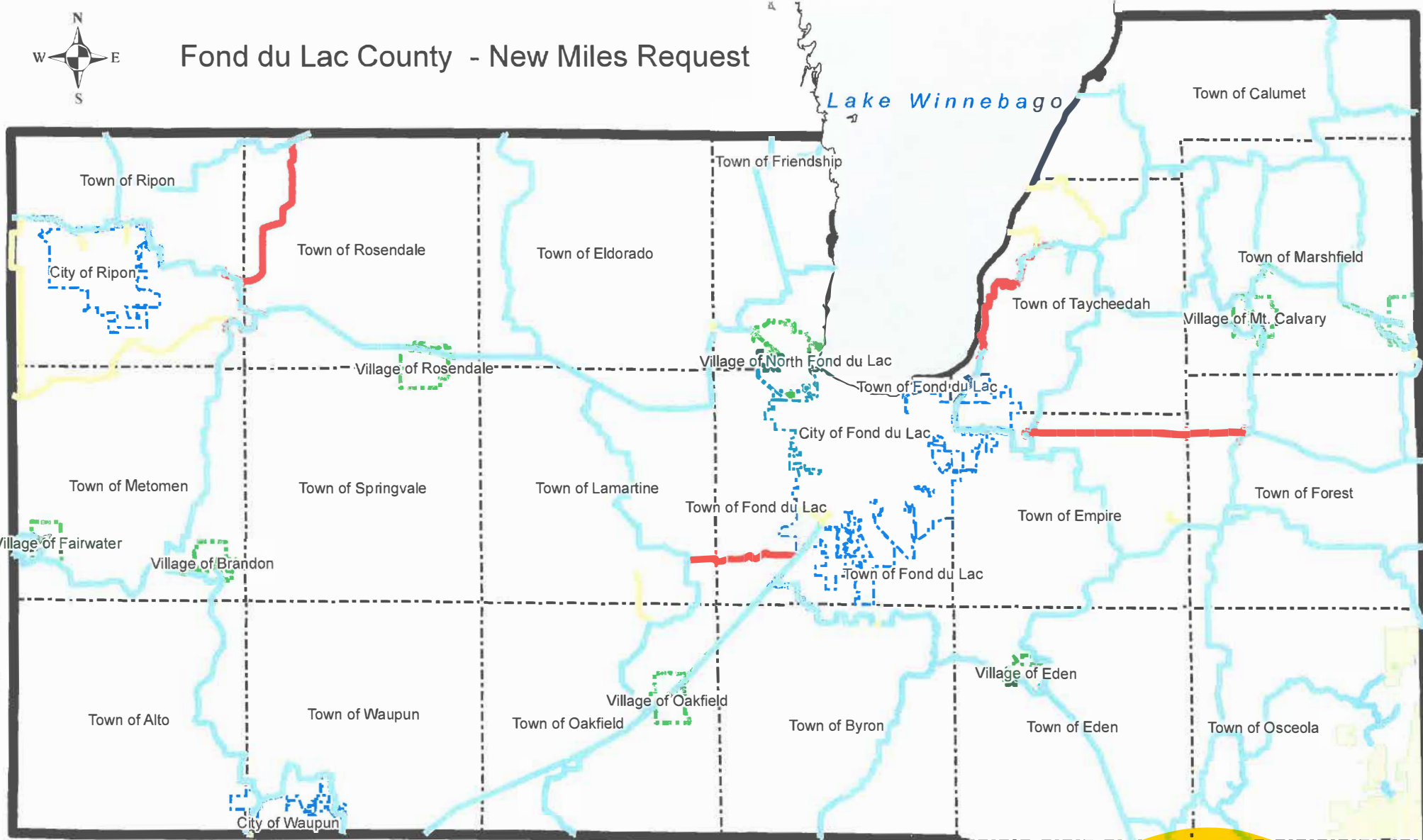
	Category	Possible Points	Actual Points
1.	Trail Longevity	Max points: 3	
	Trail segment is located on public land or private land with permanent deeded easement.	3	
	Trail segment on private lands with land-use agreement (LUA) of 10 years or more.	2	
	Trail segment is on private lands with LUA of 5 years or more.	1	
	LUA of less than 5 years.	0	
2.	Trail System	Max points: 3	
	Trail segment connects two or more counties or states.	3	
	Trail closes a gap in an existing N-S or E-W funded trail or extends existing funded trail 10 or more miles – excludes routes.	2	
	Trail segment is a part of the basic county trail system.	1	1
3.	The trail segment is in the following area of mean annual snowfall Mean Snowfall Map per County (Source: Midwestern Climate Center)	Max points: 3	
	Greater than 60 inches	3	
	48 – 60 inches	2	
	Less than 48 inches	1	1
4.	The ratio of miles of trail to total square miles of land within the county: Snowmobile Trail Area Ratio per County	Max points: 3	
	The ratio is within the grouping 01% - 30%	3	
	The ratio is within the grouping 31% - 40%	2	
	The ratio is within the grouping 41% - 50%	1	1

5.	Trail segment will be groomed with the following equipment.	Max points: 2	
	Class A-1, A-2 includes AAA and AA	2	2
	Class A-3, A-4 includes AAA and AA	1	
	Class B or C	0	
6.	County snowmobile trail coordinator priority points.	Max points: 2	
	Note: County is allowed 2 points maximum for ALL trail segments submitted.		
	High priority.	2	
	Medium priority.	1	1
	No priority.	0	
7.	Deductions if trail segment contains any of the following:	Max deduction: -8	
	New bridge, major bridge rehab or major trail rehab	-3	
	Trail segment is parallel (within 5 miles) to another funded segment	-3	
	Trail runs to a lake/river	-2	
(Maximum Points: 16) TOTAL			6

Last revised: 01/10/2019



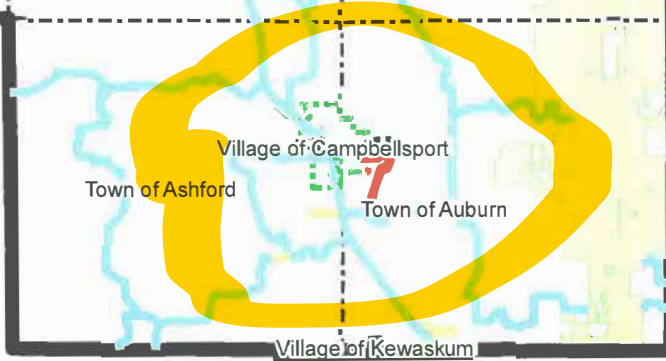
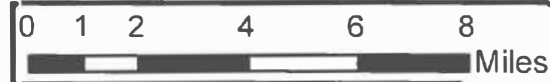
Fond du Lac County - New Miles Request



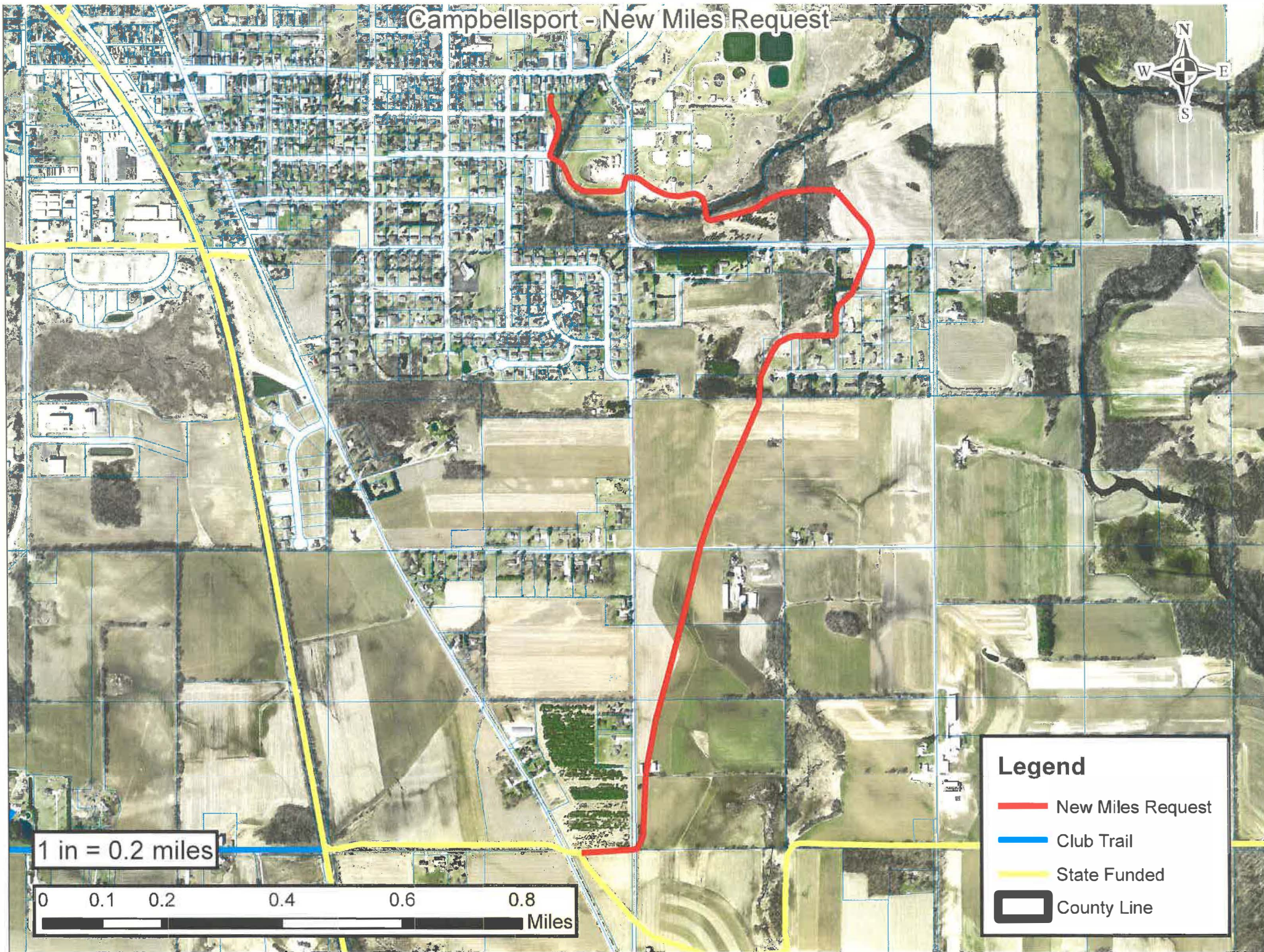
Legend

- New Miles Request
- Club Trail
- State Funded
- County Line
- City
- Village
- Town
- Kettle Moraine State Forest

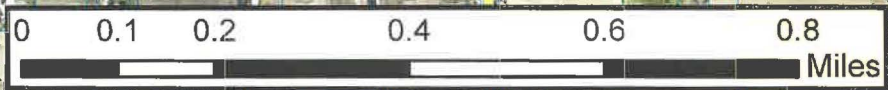
1 in = 3.5 miles



Campbellsport - New Miles Request



1 in = 0.2 miles



Legend

- New Miles Request
- Club Trail
- State Funded
- County Line