

New Trail Ranking and Certification Worksheet

County: Florence Segment Name/Trail #: F5 to Marinette Cty.

Qualification – All items in this section must be completed for valid new miles request.

Gateways questions: Provide justification for selection below.

- 1. Trail provides primary access route through a county and connects with another county's trails.
- 2. Trail provides access from population centers to main access trail(s).
- 3. Trail supports a high volume of use.

Maps attached

- Provide GIS file (shapefile, etc) of county trail system with the requested trail segments included.
- Provide countywide trail system map (printed/PDF) with the requested trail segments identified.
- Provide aerial map (printed/PDF) for each segment.
- Provide topographical map (printed/PDF) for each segment. Include Town-Range-Section.

I certify that this trail meets or will meet all trail requirements in chs. 23 & 350, Wis. Stats. and ch. NR 50, Wis.

Admin. Code

1. Minimum graded width for one-way trails is 6 feet and maximum 8 feet.
2. Minimum graded width for two-way trails is 10 feet and maximum 12 feet.
3. Minimum turning radius is 25 feet.
4. Minimum cleared height above trail is 10 feet.
5. Sustained grades and slopes will be a maximum of 25%.
6. Approved, fully reflectorized snowmobile signs must be used.
7. **Night travel on or in the vicinity of highways must be in the direction of vehicular traffic in the nearest lane unless:**
 - The snowmobile trail is located at least 40 feet from the roadway, or
 - is separated from the roadway by a head lamp barrier.
8. Snowmobile trails shall not be routed over bodies of water. If stream crossings make bridging necessary, bridges should be at least 8 feet wide. If the bridge is located on an abandoned railroad grade, the bridge shall be a minimum of 10 feet wide free from obstruction.

Justification – Provide narrative description of the new trail with explanation for gateway qualification checked (#1, 2 or 3 above).

- 1) Un-named trail serves as a connector trail to Marinette Counties trail G.
- 2) This trail connects to Marinette County and trail G that connects to Corridor 16 which leads W. to the Town of Goodman and E. to the Town of Dunbar. Dining and gas are available in Goodman and dining, gas, and lodging are available in Dunbar.
- 3) This trail sees a high amount of traffic due to the connection to Marinette County and Corridor 16. C16 connects to the Towns of Goodman and Dunbar which have gas, dining and Dunbar has lodging.

Does the requested trail segment include any bridges or water crossings? Describe. Bridge structures should be added to the county's snowmobile bridge inventory if not already included.

NO

Ranking

	Category	Possible Points	Actual Points
1.	Trail Longevity (<i>If multiple scenarios along the trail, lowest point situation applies. County must have a copy of said easements/LUA on file.</i>)	Max points: 3	
	Trail segment is located on public land or private land with permanent deeded easement.	3	3
	Trail segment on private lands with land-use agreement (LUA) of 10 years or more.	2	
	Trail segment is on private lands with LUA of 5 to 9 years.	1	
	LUA of less than 5 years.	0	
2.	Trail System (<i>choose one</i>)	Max points: 3	
	Trail segment connects directly to one or more neighboring county or state trails.	3	3
	Trail closes a gap between two existing funded trail segments, <i>or</i> extends existing funded trail 10 or more miles – excludes routes.	2	
	Trail segment is a part of the basic county trail system.	1	
	Trail is isolated and does not connect to the county trail system.	0	
3.	The trail segment is in the following area of mean annual snowfall Mean Snowfall Map per County (Source: Midwestern Climate Center)	Max points: 3	
	Greater than 60 inches	3	3
	48 – 60 inches	2	
	Less than 48 inches	1	
4.	The ratio of miles of trail to total square miles of land within the county: Snowmobile Trail Area Ratio per County	Max points: 3	
	The ratio is within the grouping 01% - 30%	3	
	The ratio is within the grouping 31% - 40%	2	2
	The ratio is within the grouping 41% - 50%	1	
	The ratio is in a grouping of over 50%	0	
5.	Trail segment will be groomed with the following equipment. (<i>choose one</i>)	Max points: 2	
	Class A-1, A-2 includes AAA and AA	2	2
	Class A-3, A-4 includes AAA and AA	1	
	Class B or C	0	
6.	County snowmobile trail coordinator priority points. Note: County is allowed 2 points maximum for ALL trail segments submitted.	Max points: 2	
	High priority.	2	2
	Medium priority.	1	
	No priority.	0	
7.	Deductions if trail segment contains any of the following: (<i>check all that apply</i>)	Max deduction: -8	
	New bridge, major bridge rehab or major trail rehab	-3	
	Trail segment is parallel (within 5 miles) to another funded segment	-3	-3
	Trail runs to a body of water. (<i>no deduction for use of a bridge to cross</i>)	-2	
		(Maximum Points: 16) TOTAL	15

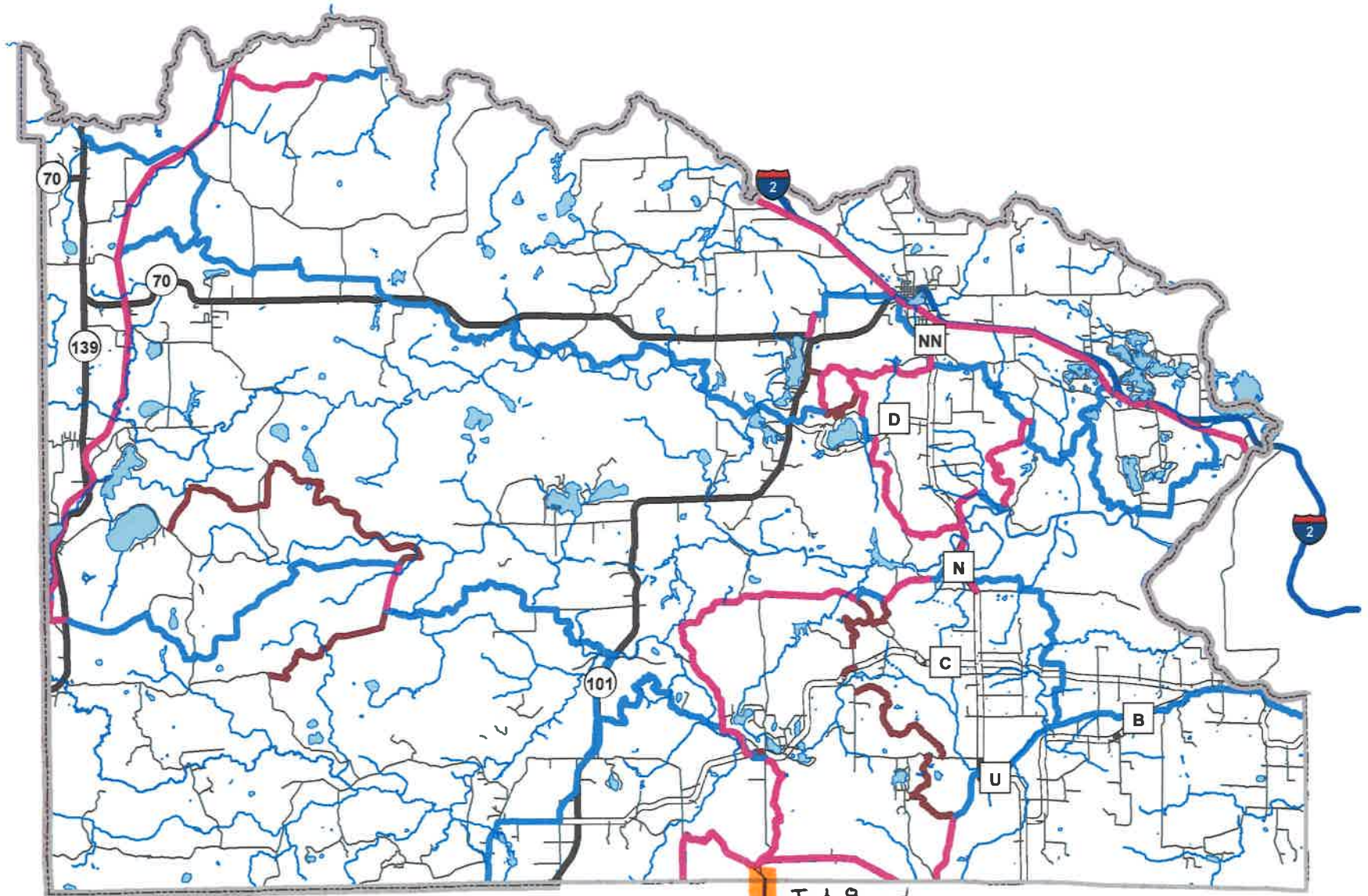
***Please verify that all sections of this form have been completed,
and all required attachments included prior to submittal.***

Combination Snowmobile, ATV and UTV Trails

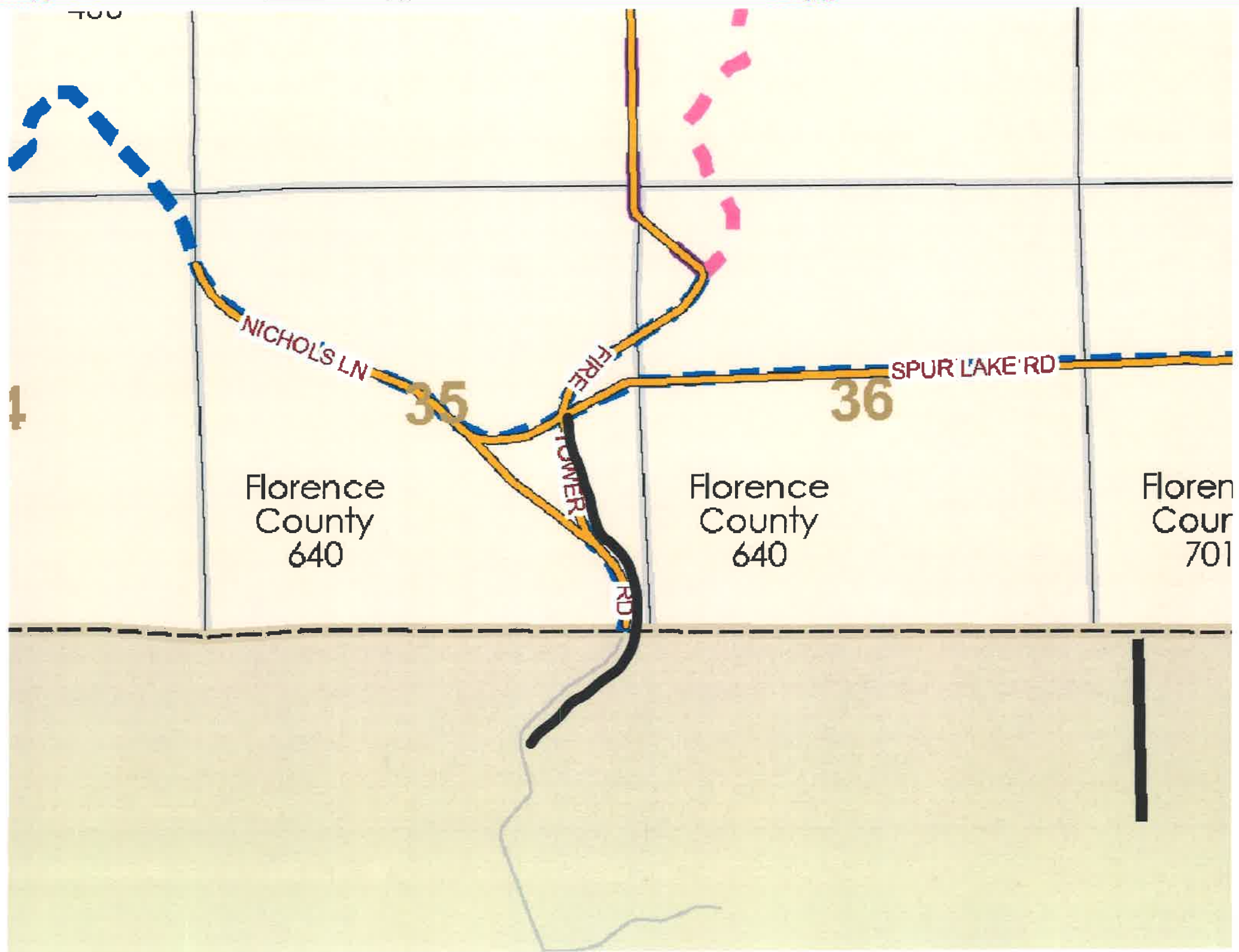
- 68.35 miles funded for Snowmobiles, ATV's and UTV's in Winter. Miles groomed may be closer to 71 miles

Legend

- Combination Snowmobile, ATV and UTV Trails
 - Snowmobile Only
 - ATV/UTV Only
- HCS 4/21/21



Jct. 8 and
Unnamed trail from Florence Cty. to Marinette Cty.
Trail known as trail G in Marinette Cty.
• 53... New Snow



700

4

NICHOLS LN

35

FIRE TOWER RD

36

SPUR LAKE RD

Florence
County
640

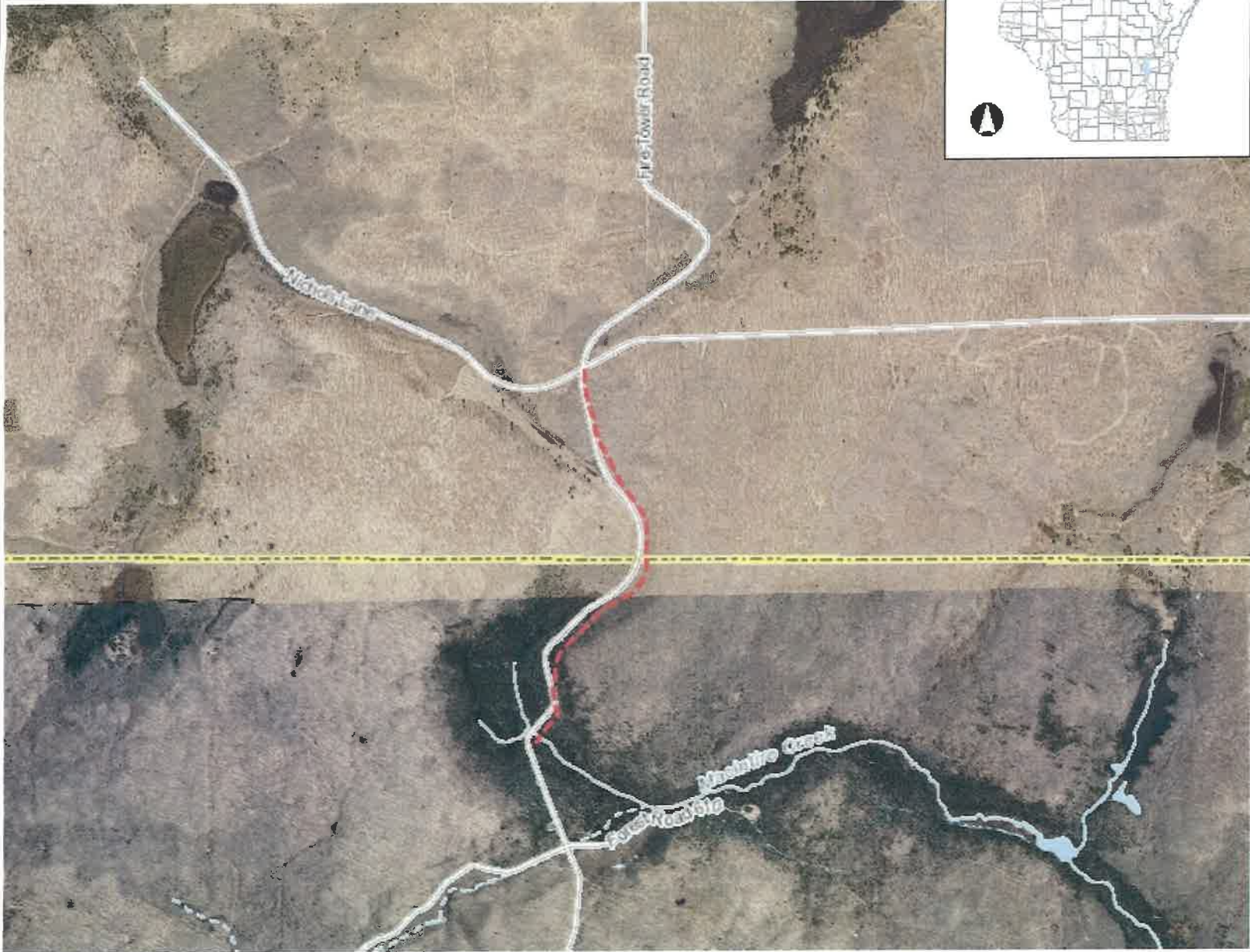
Florence
County
640

Floren
Cour
701

RD



Surface Water Data Viewer Map Aerial



Legend

- Municipality
- State Boundaries
- County Boundaries
- Major Roads**
 - Interstate Highway
 - State Highway
 - US Highway
- County and Local Roads**
 - County HWY
 - Local Road
- Railroads
- Tribal Lands
- Rivers and Streams
- Intermittent Streams
- Lakes and Open water
- Index to EN_Image_Basemap_Leaf_Off

0.8 0 0.38 0.8 Miles

NAD_1983_HARN_Wisconsin_TM

1: 23,760

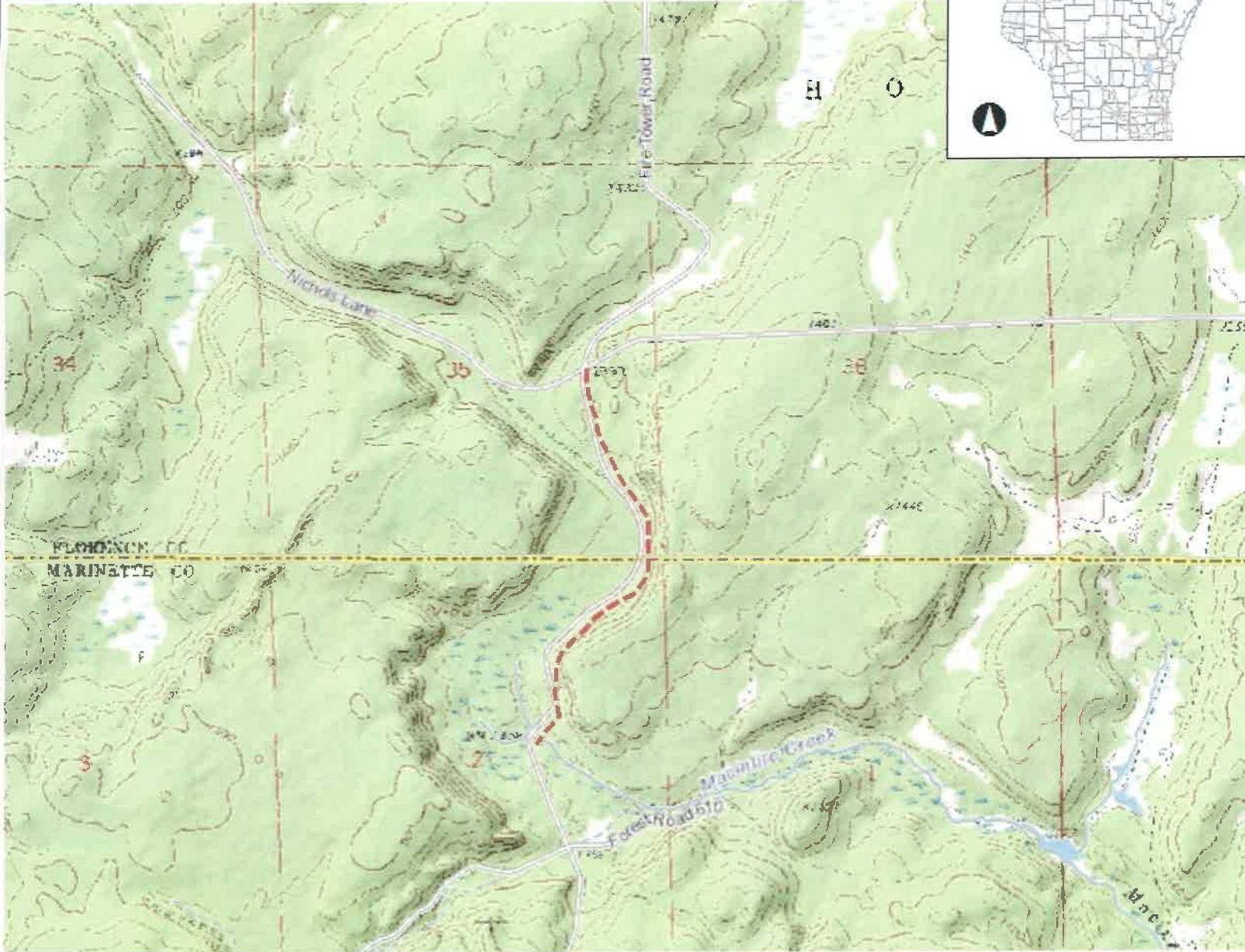
DISCLAIMER: The information shown on these maps has been obtained from various sources, and are of varying age, reliability and resolution. These maps are not intended to be used for navigation, nor are these maps an authoritative source of information about legal land ownership or public access. No warranty, expressed or implied, is made regarding accuracy, applicability for a particular use, completeness, or legality of the information depicted on this map. For more information, see the DNR Legal Notices web page: <http://dnr.wi.gov/legal/>

Notes

T38N-R17E Sect.35 SE1/4 1/4, SE1/4 F5-un-named trail provides a direct connection to Marinette County and Corridor 16. This has been maintained for years without funding.



Surface Water Data Viewer Map Topo



Legend

- Municipality
- State Boundaries
- County Boundaries
- Major Roads**
 - Interstate Highway
 - State Highway
 - US Highway
- County and Local Roads**
 - County HWY
 - Local Road
- Railroads
- Tribal Lands
- Rivers and Streams
- Intermittent Streams
- Lakes and Open water
- 24K USGS Quad Index - Level 7 - 16
- Index to EN_Image_Basemap_Leaf_Off

0.8 0 0.38 0.8 Miles

NAD_1983_HARN_Wisconsin_TM

1: 23,760

DISCLAIMER: The information shown on these maps has been obtained from various sources, and are of varying age, reliability and resolution. These maps are not intended to be used for navigation, nor are these maps an authoritative source of information about legal land ownership or public access. No warranty, expressed or implied, is made regarding accuracy, applicability for a particular use, completeness, or legality of the information depicted on this map. For more information, see the DNR Legal Notices web page: <http://dnr.wi.gov/legal/>

Notes

T38N-R17E Sect.35 SE1/4 1/4, SE1/4 F5-un-named trail provides a direct connection to Marinette County and Corridor 16. This has been maintained for years without funding.

