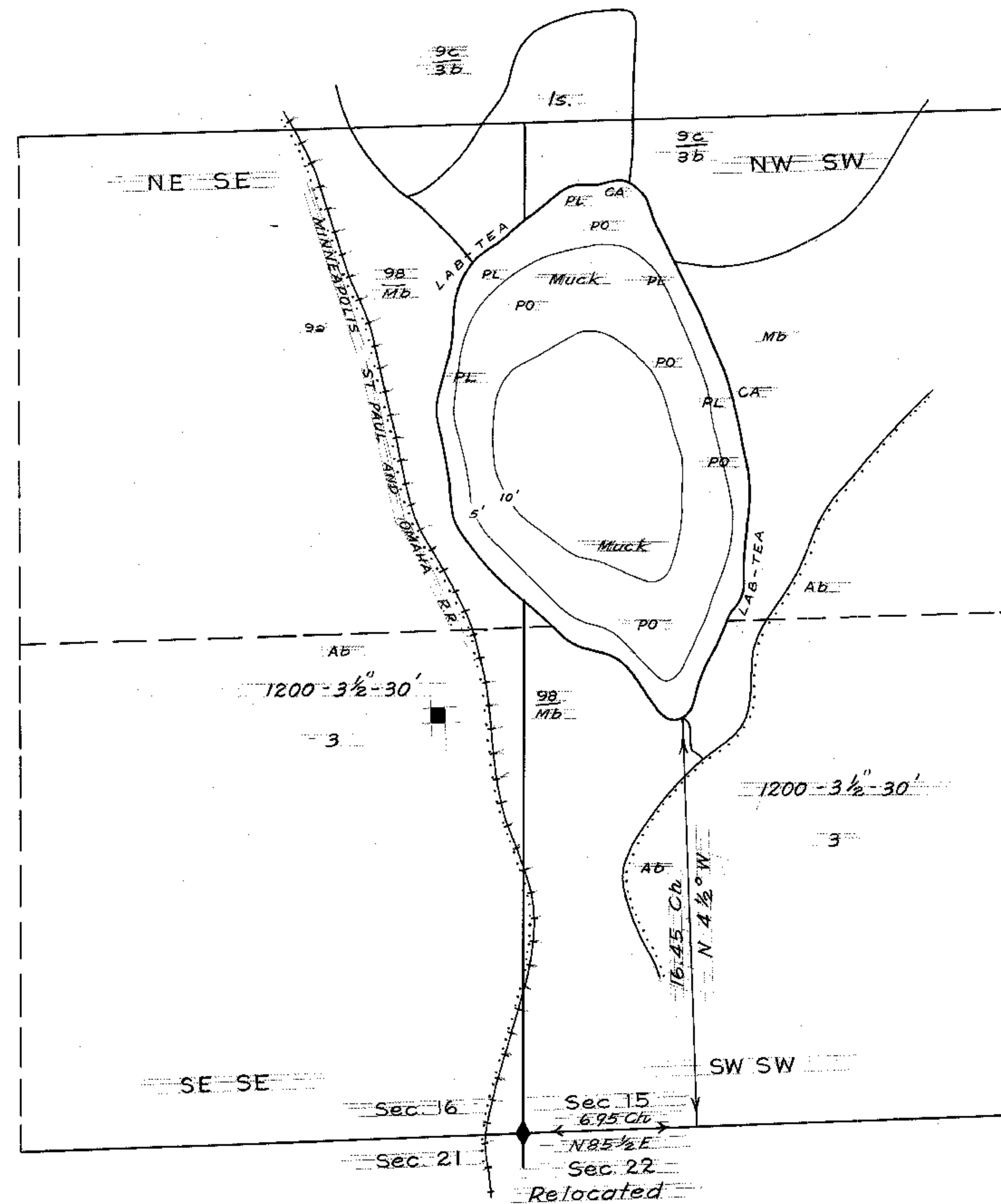


LAKE CRANE LAKE  
 SECTION 15 & 16  
 TOWNSHIP 44 N  
 RANGE 7 W  
 TOWN \_\_\_\_\_  
 COUNTY BAYFIELD



DATE 1936  
 SOURCE OF INFORMATION \_\_\_\_\_  
U.S. Department of Agriculture  
Forest Service  
 SOUNDINGS 5 Intervals

AREA 17 Acres  
 TOTAL SHORELINE 63 Miles  
 MAX. DEPTH 10 Feet  
 SCALE: 16" = 1 Mile

Source: Wisconsin Department of Natural Resources 608-266-2621  
Crane Lake – Bayfield County, Wisconsin DNR Lake Map  
Date – 1936 - Historical Lake Map - Not for Navigation  
A Public Document - Please Identify the Source when using it.